

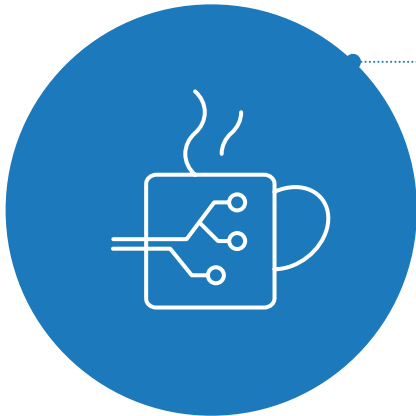


## Conventional environment assistive technology

# 21,326

patent families for conventional environment assistive technology filed across **51 patent offices**

### What technologies are involved?



**Domestic/workplace assistive technology and devices**  
14,470 (68%)



**Assistive technologies for culture, recreation and leisure**  
2,985 (14%)



**Alarms**  
2,660 (12%)



**Assistive products for vertical accessibility**  
1,558 (7%)

### Which are the fastest growing technologies?

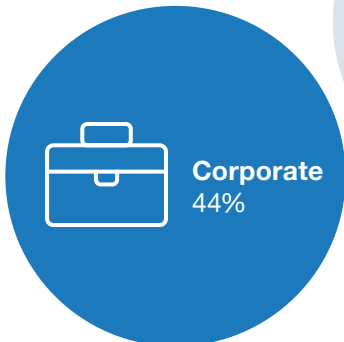
Filings in **assistive products for vertical accessibility** saw an average annual growth rate of **41%** between 2013 and 2017



Most top filers are Japanese companies. Conventional environment assistive technology encompasses a broad range of technologies and is highly fragmented, with many small patent portfolios.

### Who is filing?

#### Applicant sector



**Individuals**  
45%



**Academia**  
10%

#### Top patent applicants

<b>Panasonic (Japan)</b>	<b>282</b>
<b>Toto (Japan)</b>	158
<b>Sekisui Chemical (Japan)</b>	116
<b>Toagosei (Japan)</b>	97
<b>Stannah Stairlifts (U.K.)</b>	91