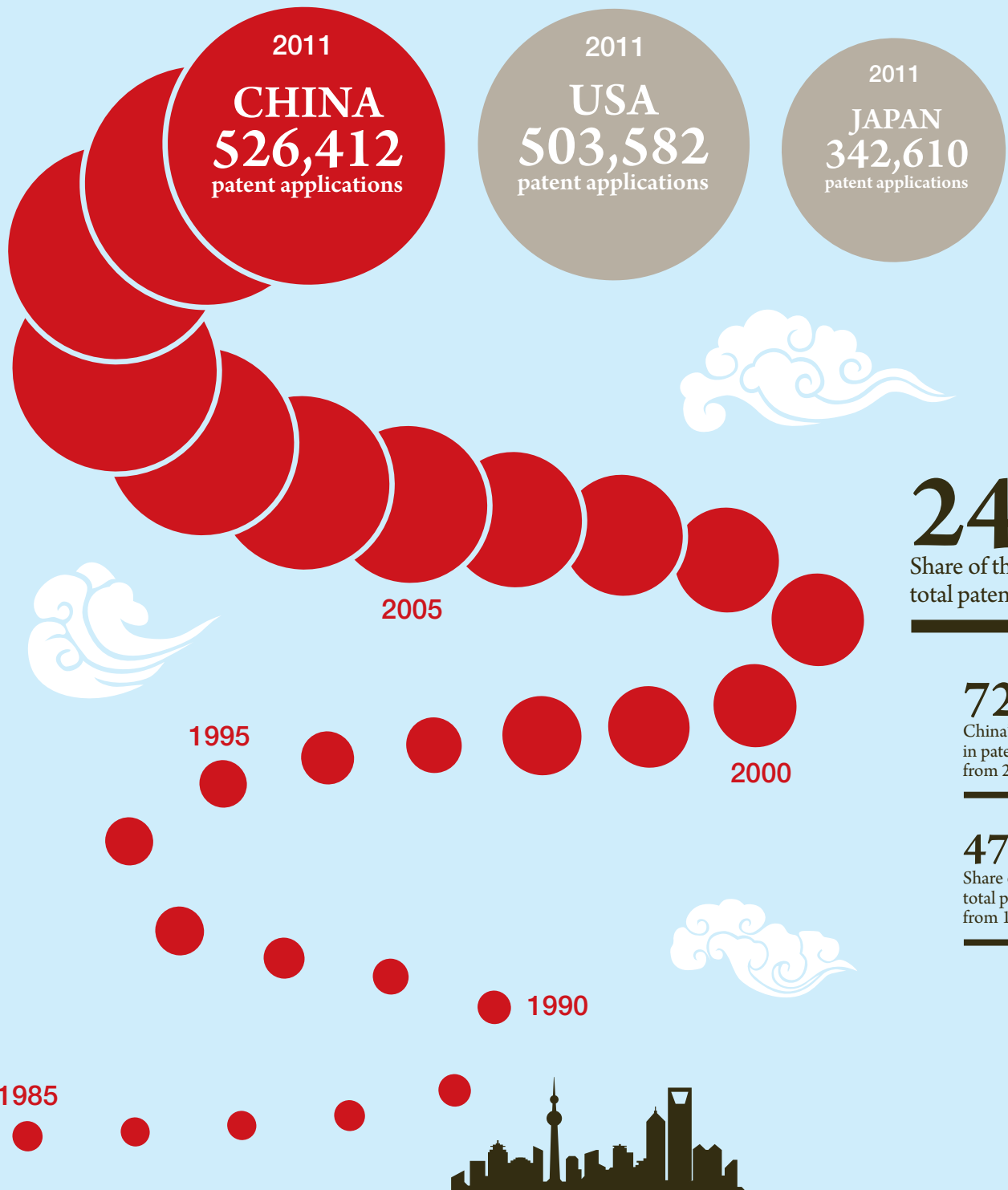


# CHINA'S PATENT SURGE

IN 2011, CHINA BECAME THE LARGEST PATENT OFFICE IN THE WORLD.



2011  
**CHINA**  
**526,412**  
patent applications

2011  
**USA**  
**503,582**  
patent applications

2011  
**JAPAN**  
**342,610**  
patent applications

**24.6%**  
Share of the Chinese office in total patent applications in 2011

**72.1%**  
China's contribution to growth in patent applications worldwide from 2009 to 2011

**47.5% → 79%**  
Share of Chinese residents in total patent applications in China from 1985 to 2011



## TOP 3 IN 2011

\* Similar to patents, but usually with less stringent patentability requirements  
\*\* Office for Harmonization in the Internal Market