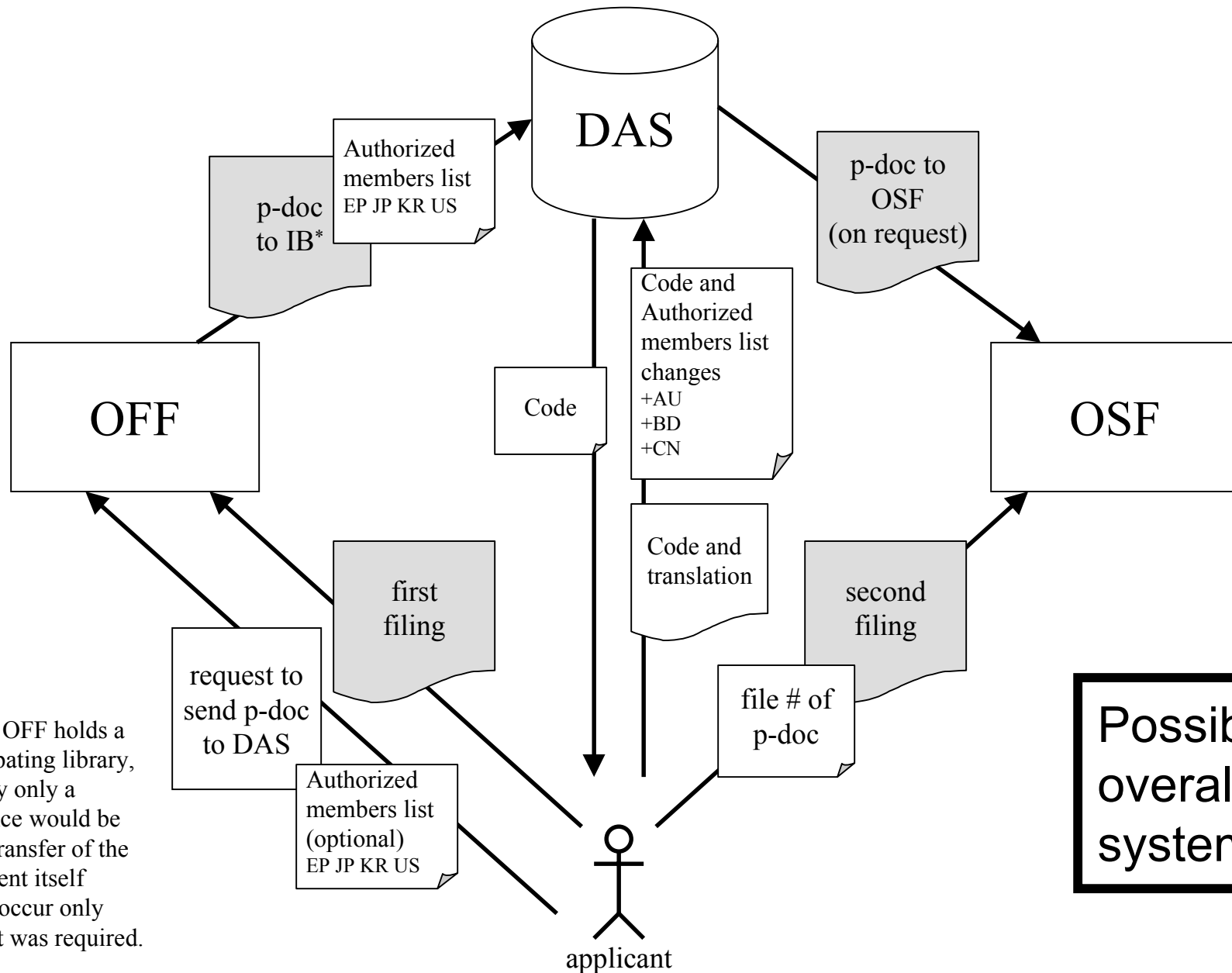


WIPO Working Group on the Digital Access Service for Priority Documents

Possible system features

Notes of discussions in the technical breakout sessions



Possible overall system

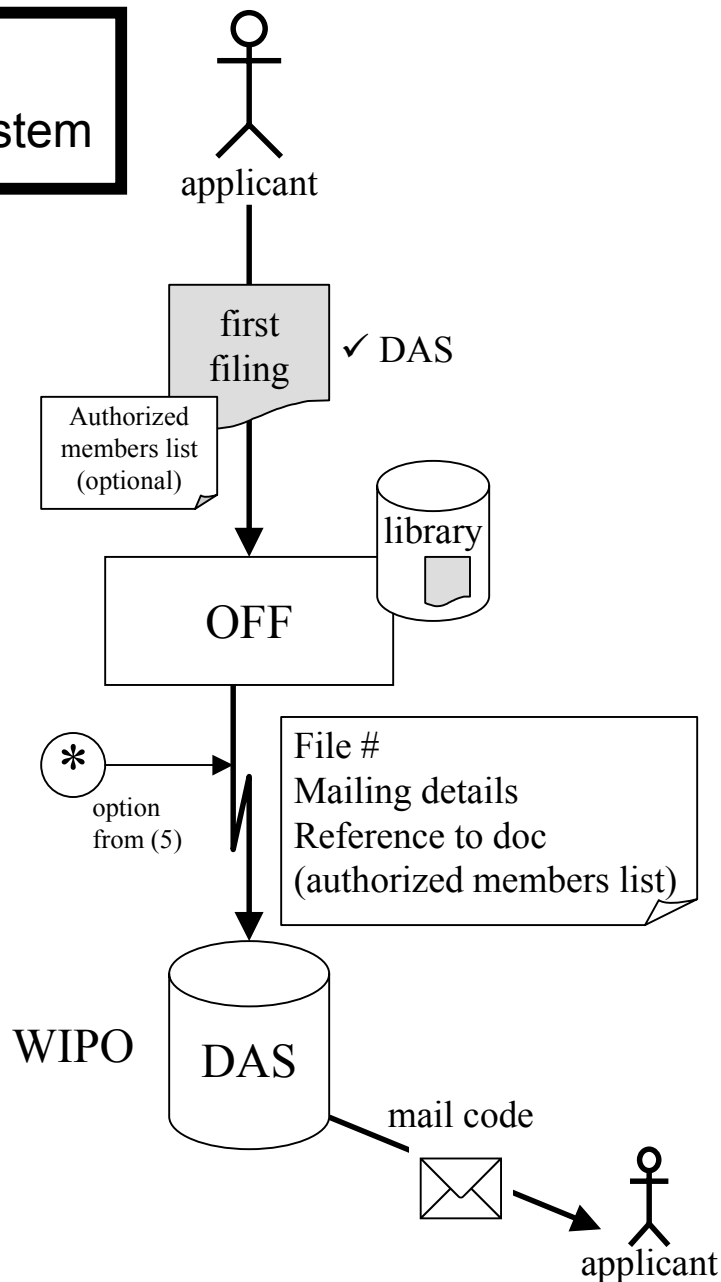
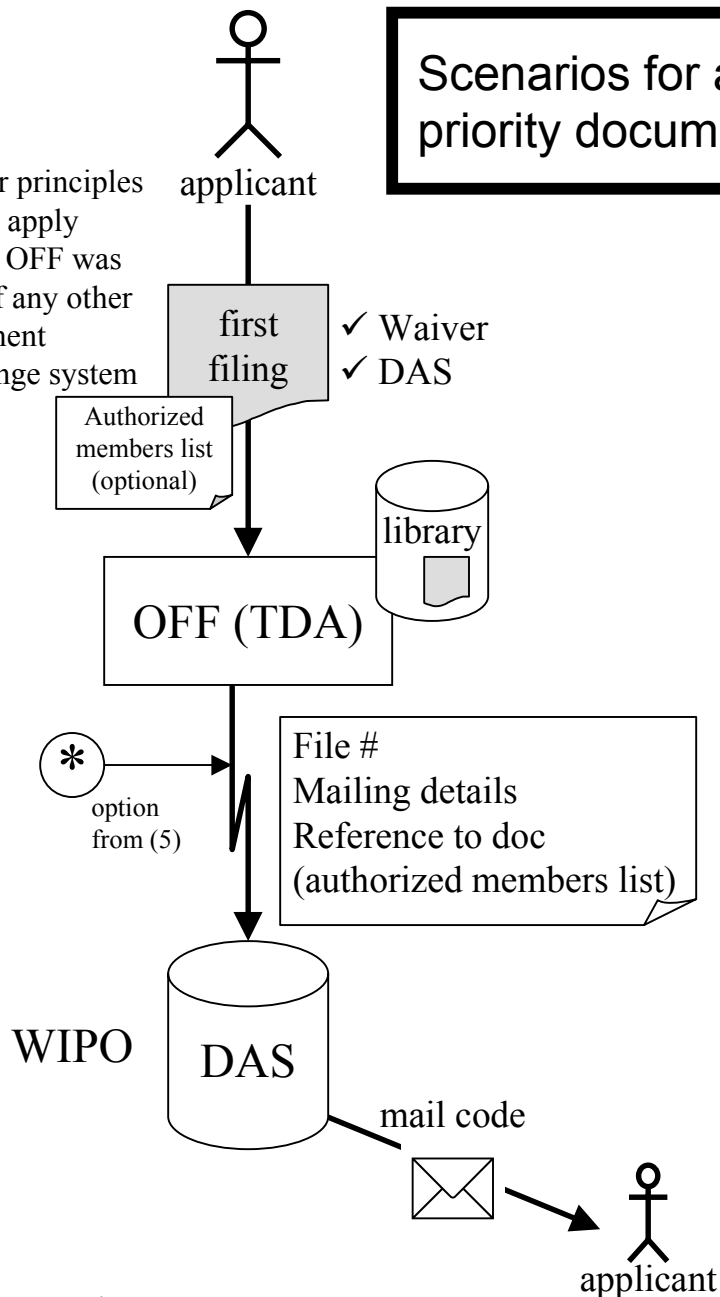
* Where OFF holds a participating library, initially only a reference would be sent; transfer of the document itself would occur only when it was required.

*(1) OFF in TDA**

(2) Other OFF with digital library

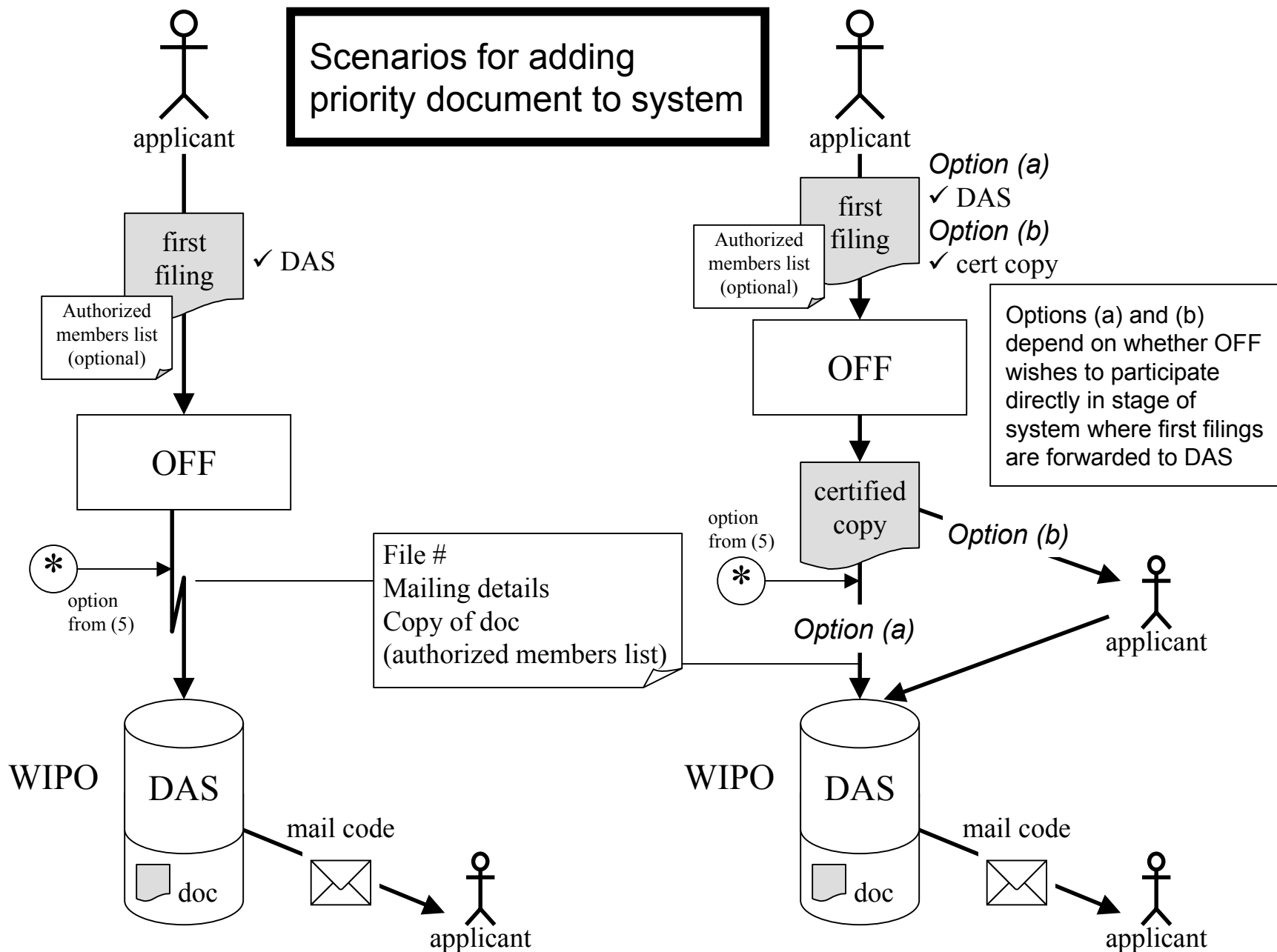
Scenarios for adding priority document to system

* similar principles would apply where OFF was part of any other document exchange system

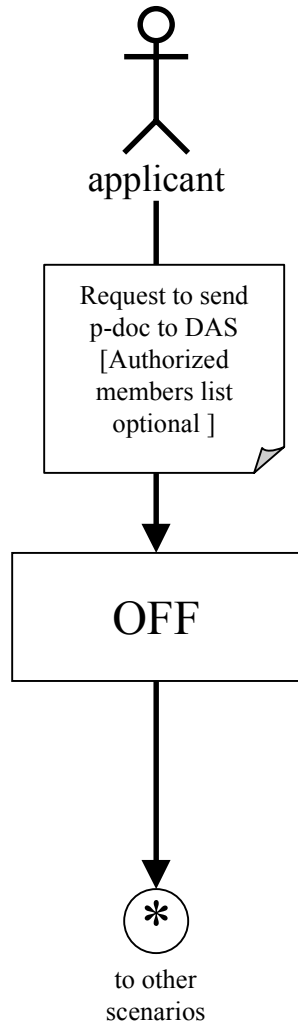


(3) e-OFF, no digital library

(4) OFF with no electronic access

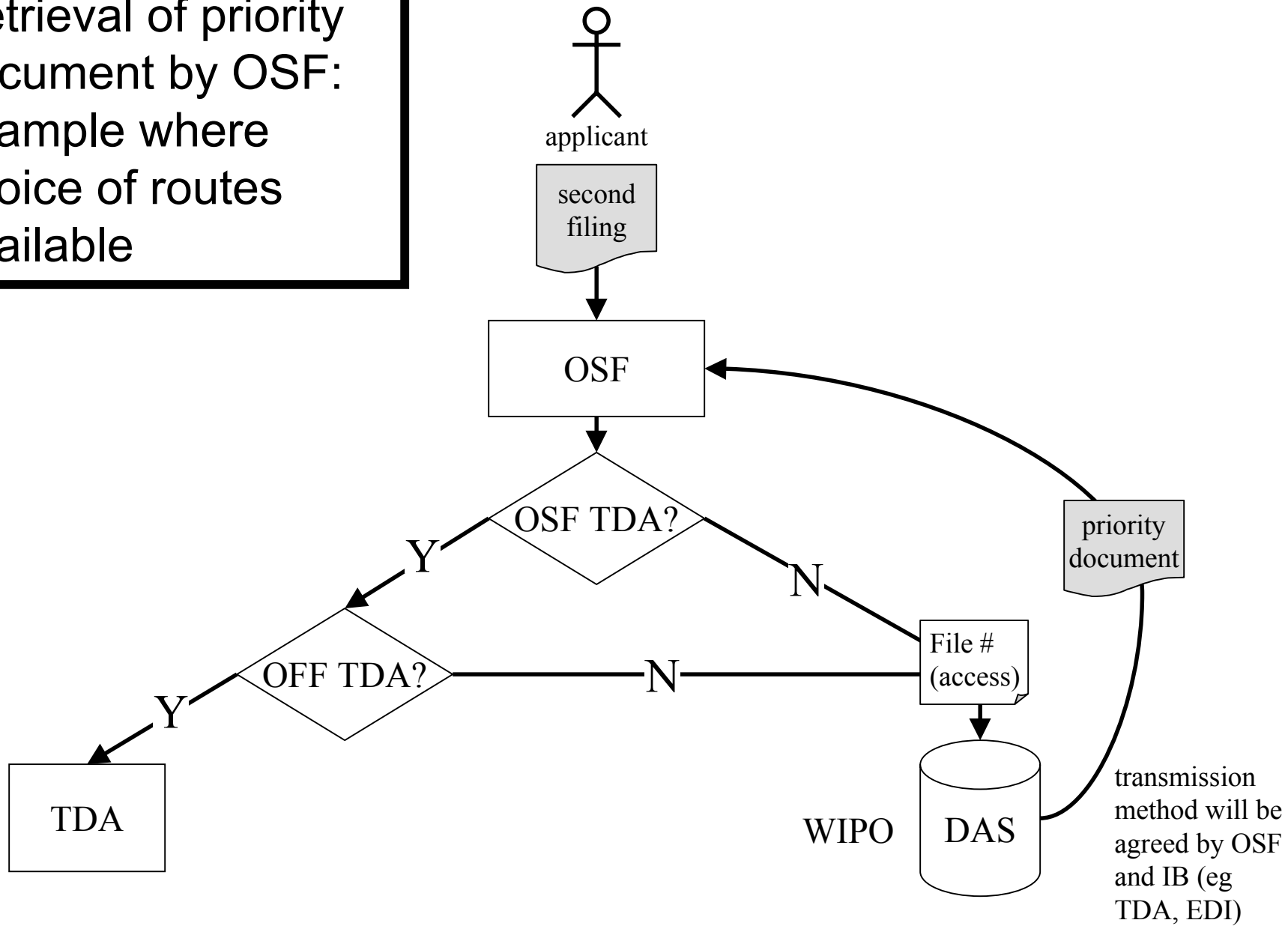


(5) Later request to enter DAS



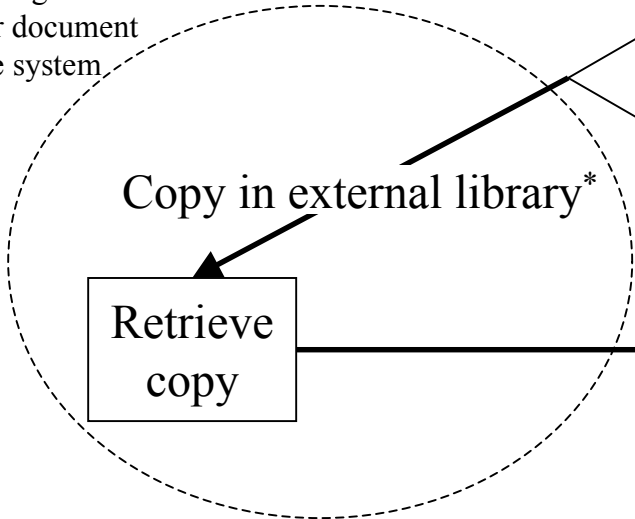
Scenarios for adding priority document to system

Retrieval of priority document by OSF:
example where
choice of routes
available



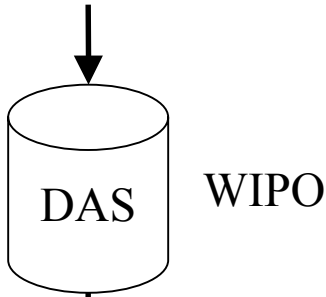
Locating priority documents within associated network of libraries

Participating external library or document exchange system



Copy in external library*

Retrieve copy



doc location index

Copy within DAS local library

priority document

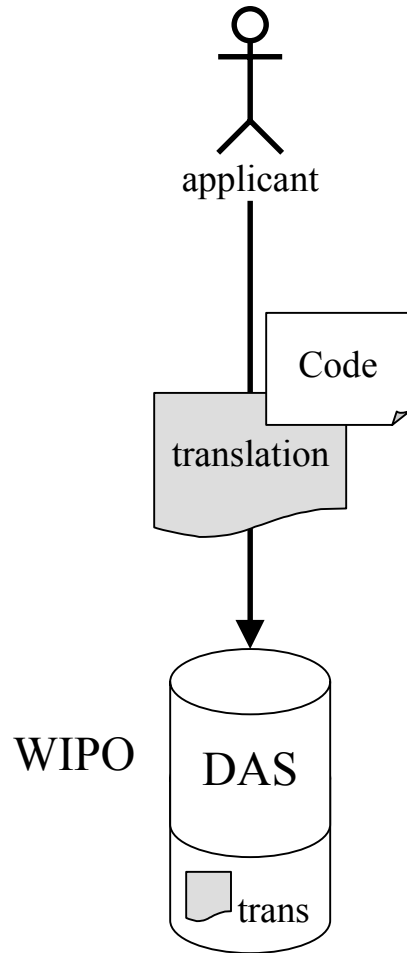
Send copy

priority document

OSF

* copy might be held in standalone digital library or part of another wider document exchange system, such as TDA

Adding translations



Access control options discussed

- (A) Access code
 - given to (or received from) applicant
 - applicant provides to OSF

- (B) List of countries
 - (i) OFF forwards to DAS changes to list
 - or
 - (ii) client maintains list on DAS
 - or
 - (iii) client and/or OFF maintains list on DAS

Code assignment possibilities discussed

(1) IB always assigns code

(2) OFF usually assigns code

- reduces mailings (OFF could return code with filing receipt)
- IB might still need to assign some codes

(3) Applicant decides on and provides code to OFF

- OFF forwards code to DAS
- no notification of code required
- applicant could use same code for all applications if desired (at own risk)