



Practical cases in the Global Brand Database

Virtual
4 February
2021

Sandrine Ammann
Marketing & Communications Officer

Perform a trademark search by text or image in brand data from multiple national and international sources, including trademarks, appellations of origin and official emblems. V: 2021-02-01 23:6

Data from Zambia available Over 20,000 records added	2021-01-26	Data from India available Close to 2 million records added	2020-10-01	Data from San Marin available Over 3,700 records added	2020-07-08	Data from Albania available Over 18,000 records added	2020-06-19	Data from Ukraine available Over 269,000 records added	2020-05-01	Data from Serbia available Over 56,000 records added	2020-04-30	Data from Kazakhstan available Over 67,000 records added
--	------------	--	------------	--	------------	---	------------	--	------------	--	------------	--

SEARCH BY

Brand Names Numbers Dates Class Country

Text = e.g. wipo OR ompi, *ntel*, ompi~

Image Class = e.g. 05.07.13, apple AND tree

Goods/Services = e.g. footwear, comput*

search

FILTER BY

Source Image Type Status Origin App. Year * Expiration *

AE TM	218,835	AL TM	19,075	AU TM	1,825,071	BH TM	106,629	BN TM	50,285
BT TM	20,115	BW TM	38,034	CA TM	1,759,228	CH TM	450,663	CL TM	602,514
CR TM	346,553	DE TM	2,204,932	DK TM	296,360	DZ TM	39,531	EE TM	62,684
EG TM	137,875	EM TM	1,919,644	ES TM	1,043,854	FR TM	2,952,100	GE TM	45,444
GH TM	31,225	GM TM	8,707	ID TM	985,419	IL TM	301,491	IN TM	1,995,796
IS TM	117,038	IT TM	1,229,433	JO TM	161,590	JP TM	2,271,193	KE TM	95,165

Display: List Sort: Value - asc filter

1 - 30 / 45,486,165 TMview

Display: 30 per page options

	Brand	Source	Status	Relevance	Origin	Holder	Holder Countr	Number	App. Date	Image Class	Nice Cl.	Image
<input type="checkbox"/>	Ounife	NZ TM	Pending	1	NZ	Foshan Junyu Science and Technology Co., Ltd.	CN	1169817	2021-02-01		5	
<input type="checkbox"/>	Almiok	NZ TM	Pending	1	NZ	Foshan Junyu Science and Technology Co., Ltd.	CN	1169818	2021-02-01		5	
<input type="checkbox"/>	Kirito	NZ TM	Pending	1	NZ	Foshan Junyu Science and Technology Co., Ltd.	CN	1169819	2021-02-01		35	
<input type="checkbox"/>	lookingpet	NZ TM	Pending	1	NZ	Guangzhou Luchong Network Technology Co., Ltd.	CN	1169592	2021-02-01		9, 18, 35	
<input type="checkbox"/>	Ario Vineyard	NZ TM	Pending	1	NZ	Rachael Cook	NZ	1169820	2021-02-01		33	
<input type="checkbox"/>	CRAFTOYS	NZ TM	Pending	1	NZ	Ben tang	NZ	1169825	2021-02-01		35, 39	
<input type="checkbox"/>	Rarefind	NZ TM	Pending	1	NZ	Chelsea Vliss	NZ	1169823	2021-02-01		25	
<input type="checkbox"/>	Reynolds Resistance, R R	NZ TM	Pending	1	NZ	REYNOLDS RESISTANCE LIMITED	NZ	1169824	2021-02-01		28	

Practical cases

- Search by brand
 - Multi-criteria
 - Foreign language
- Search by sound
- Search by wordmark
- Search by image
- Statistical report



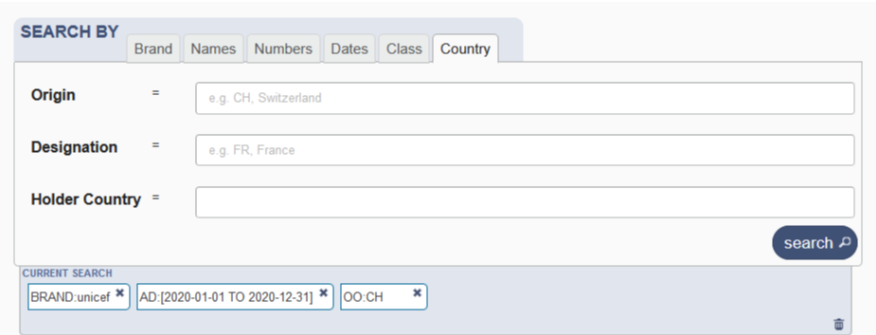
Complex

- Name: unicef
- Application: 2020
- Swiss collection



2 options

1. All search criterias In *Search by*



The screenshot displays a search interface titled "SEARCH BY" with several tabs: "Brand", "Names", "Numbers", "Dates", "Class", and "Country". The "Country" tab is selected. Below the tabs, there are three input fields with labels and example text:

- Origin** = e.g. CH, Switzerland
- Designation** = e.g. FR, France
- Holder Country** =

A "search" button with a magnifying glass icon is located to the right of the input fields. Below the main search area, there is a "CURRENT SEARCH" section with three search criteria: "BRAND:unicef", "AD:[2020-01-01 TO 2020-12-31]", and "OO.CH". Each criterion has a small 'x' icon to its right, and a trash icon is visible at the bottom right of the current search area.

2 options

1. All search criterias

SEARCH BY

Brand Names Numbers Dates Class Country

Origin = e.g. CH, Switzerland

Designation = e.g. FR, France

Holder Country =

search

CURRENT SEARCH

BRAND:unicef AD:[2020-01-01 TO 2020-12-31] OO:CH

2. Initial brand in *search by* + *filters by*

SEARCH BY

Brand Names Numbers Dates Class Country

Text = e.g. wipo OR ompi, *intel*, ompi~

Image Class = e.g. 05.07.13, apple AND tree

Goods/Services = e.g. footwear, comput*

search

CURRENT SEARCH

BRAND:unicef

FILTER BY

Origin App. Year * Expiration * Nice Cl. * Designation * Reg. Year * Holder Country *

CH 6

Display: List Sort: Count - desc

filter

CURRENT FILTER

AD:2020 OO:CH

WIPO

Option 1: all search criterias

SEARCH BY

Brand Names Numbers Dates Class Country

Text = unicef

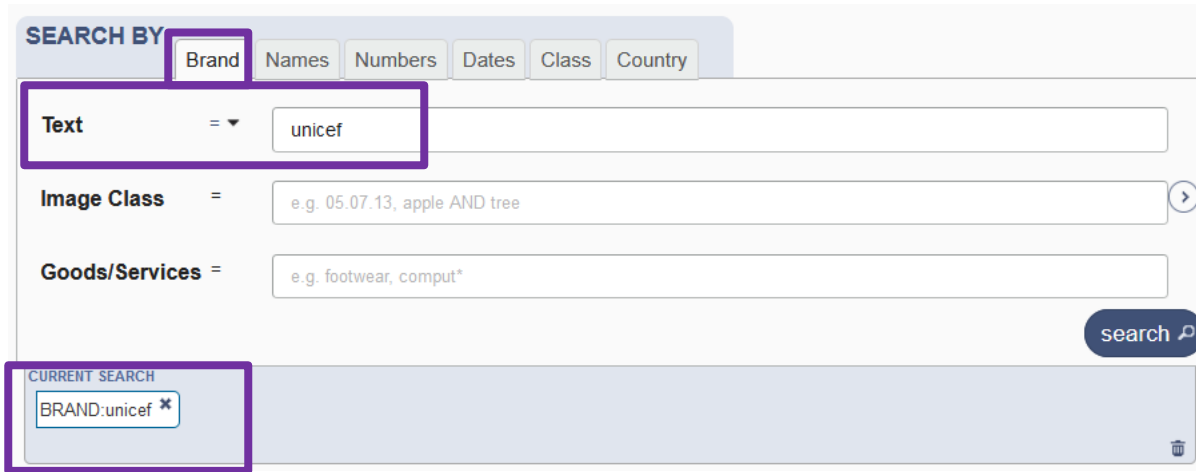
Image Class = e.g. 05.07.13, apple AND tree

Goods/Services = e.g. footwear, comput*

search

CURRENT SEARCH

BRAND:unicef *

The image shows a search interface with a 'SEARCH BY' section containing tabs for 'Brand', 'Names', 'Numbers', 'Dates', 'Class', and 'Country'. Below these are three search criteria: 'Text' with a dropdown menu set to '=' and a text input field containing 'unicef'; 'Image Class' with a text input field containing 'e.g. 05.07.13, apple AND tree'; and 'Goods/Services' with a text input field containing 'e.g. footwear, comput*'. A 'search' button is located to the right of these fields. Below the search criteria is a 'CURRENT SEARCH' section containing a box with the text 'BRAND:unicef *' and a trash icon to its right.

Option 1: all search criterias

SEARCH BY

Brand Names Numbers Dates Class Country

Text = unicef

Image Class = e.g. 05.07.13, apple AND tree

Goods/Services = e.g. footwear, comput*

search

CURRENT SEARCH

BRAND:unicef ✕

SEARCH BY

Brand Names Numbers Dates Class Country

Registration = e.g. 2000-01-01, [2000-01-01 TO 2004-01-01]

Application = e.g. 2013-12-31, [2014-06-10 TO NOW]

Expiration = Today, Last 6 months, Year to date, Specific Date, All Dates Before, All Dates After, Date Range

Start date: Jan 2020

End date: Dec 2000

1 - 100 / 116

1 2 3 4 5 6 7 8 9 10 11 12 13 14 15 16 17 18 19 20 21 22 23 24 25 26 27 28 29 30 31

Done

FILTER BY

FR 20 CA

US 7 DE

DK 1 EM

SEARCH BY

Brand Names Numbers Dates Class **Country**

Origin =

CH

Designation =

e.g. FR, France

Holder Country =

search

CURRENT SEARCH

BRAND:unicef ✕

AD:[2020-01-01 TO 2020-12-31] ✕

OO:CH ✕

1 - 6 / 6

TM view



Display: 100 per page options

Sort by Relevance - desc



1 - 6 / 6



Display: 100 per page options

Option 2: search + filter

SEARCH BY **Brand** Names Numbers Dates Class Country

Text = ▾ unicef

Image Class = e.g. 05.07.13, apple AND tree

Goods/Services = e.g. footwear, comput*

search ↗

CURRENT SEARCH

BRAND:unicef ✖

Option 2: search + filter

SEARCH BY

Brand Names Numbers Dates Class Country

Text =

Image Class =

Goods/Services =

search ↗

CURRENT SEARCH

BRAND:unicef ✕

searches records

FILTER BY

Origin App. Year * Expiration * Nice Cl. * Designation * Reg. Year * Holder Country *

2020 6

Display: List Sort: Value - desc

filter ↕

1 - 6 / 6 [TM view](#)   Display: 100 per page [options](#)

Sort by Relevance - desc

 Baby-Freundliches Krankenhaus unicef	 unicef Kinder- freundlicher Gemeinschaft unicef	 unicef Bambino amico del bambino unicef	 unicef Médical ami des bébés unicef	 unicef Communauté amie des enfants unicef	 unicef Comune amica dei bambini unicef
---	--	---	--	--	---

1 - 6 / 6   Display: 100 per page [options](#)

Search in different languages

SEARCH BY

Brand Names Numbers Dates Class Country

Text = e.g. wipo OR ompi, *ntel*, ompi~

Image Class = e.g. 05.07.13, apple AND tree

Goods/Services = e.g. footwear, comput*

search ↗



BRAND – NAMES



COUNTRY → 2 letter codes



SEARCH BY Brand Names Numbers Dates Class Country

Text = no OR ompl, *ntel*, ompl-

Image Class =

Goods/Services =

CURRENT SEARCH

BRAND车 x

FILTER BY Source Image Type Status Origin App

AE TM	0	AL TM	0	AU TM
BW TM	0	CA TM	0	CH TM
DK TM	0	DZ TM	0	EE TM
FR TM	0	GE TM	0	GH TM
IN TM	0	IS TM	0	IT TM
KH TM	0	KR TM	0	KW TM
Display:	List	Sort:	Value - asc	

1 - 7 / 7

TM view

Display: 30 per page options

	Brand	Source	Status	Relevance	Origin	Holder	Holder Country	Number	App
<input type="checkbox"/>	车可讯	NZ TM	Active	30		NZ SHENZHEN YECON INDUSTRY CO., LTD.		1081372	
<input type="checkbox"/>	租租车 zuzuche.com	NZ TM	Active	25		NZ Guangzhou Lizhi Network Technology Co. Ltd.	CN	1132289	
<input type="checkbox"/>	租租车 zuzuche.com	NZ TM	Active	25		NZ Guangzhou Lizhi Network Technology Co. Ltd.	CN	1132288	
<input type="checkbox"/>	租租车 zuzuche.com	NZ TM	Active	25		NZ Guangzhou Lizhi Network Technology Co. Ltd.	CN	1132290	
<input type="checkbox"/>	蔚来汽车 NEXTEV	IL TM	Active	25		IL NIO CO., LTD.		294972	
<input type="checkbox"/>	EVCARD e享天开分时租车	NZ TM	Active	19		NZ GLOBAL CAR SHARING&RENTAL CO.,LTD.		1131994	
<input type="checkbox"/>	TT TGO 途行租车 TOUR ON WHEELS	NZ TM	Inactive	19		NZ TT GROUP LIMITED	NZ	1091231	

1 - 7 / 7

Display: 30 per page options

scarpe =



SEARCH BY

Brand Names Numbers Dates Class Country

Text =

Image Class =

Goods/Services =

search

CURRENT SEARCH

GS:scarpe

FILTER BY

Source Image Type Status Origin App. Year * Expiration

AE TM	0	AL TM	0	AU TM	0	BH TM	
BW TM	0	CA TM	0	CH TM	1,375	CL TM	
DK TM	0	DZ TM	0	EE TM	0	EG TM	
FR TM	0	GE TM	0	GH TM	0	GM TM	
IN TM	0	IS TM	0	IT TM	144,197	JO TM	
KH TM	0	KR TM	0	KW TM	0	KZ TM	

Display: List Sort: Value - asc

1 - 30 / 145,845 **TM view** Display: 30 per page options

	Brand	Source	Status	Relevance	Origin	Holder	Holder Country	Number	App. Date	In
<input type="checkbox"/>	Amarcord	CH TM	Active	19	CH	Naldi & Co.	CH	563412017	2017-05-22	
<input type="checkbox"/>	HDry	CH TM	Active	18	CH	LUXEMBOURG S.r.l.	IT	031122019	2019-03-07	
<input type="checkbox"/>	BONEVILLE	CH TM	Active	17	CH	John Henry Sharp	GB	069191992	1992-09-23	
<input type="checkbox"/>	Ghetto Style	CH TM	Inactive	17	CH	Angel Lazaro Bashile	CH	515602016	2016-02-06	
<input type="checkbox"/>	STALLION BOOTS & LEATHER GOODS	CH TM	Inactive	17	CH	Stallion Boot Company	US	504392009	2009-01-15	
<input type="checkbox"/>	ROBEEZ	CH TM	Active	17	CH	Daytona Apparel IP LLC	US	507482004	2004-02-06	
<input type="checkbox"/>	Ashwood & Blake	CH TM	Active	17	CH	ASHWOOD & BLAKE LTD	GB	138761995	1995-12-22	
<input type="checkbox"/>	Seven	CH TM	Active	17	CH	FFG-Platinum IP Rights Limited	CY	006602009	1990-06-13	
<input type="checkbox"/>	FIRST HEART	CH TM	Pending	17	CH	ISLAND MASSOTERAPIE & RELAX and SHOPONLINE Sagl	CH	168772020	2020-11-25	

← back

Swiss Trademark

3 / 145845

P-400761- BONEVILLE ((fig.))

Status: Active

(111) Registration Number

P-400761

(151) Date of the registration

1993-04-02

(180) Expected expiration date of the registration/renewal

2022-09-23

(210) Serial number of the application

06919/1992

(220) Date of filing of the application

1992-09-23

(270) Language(s) of the application

(de)

(540) Mark



(731) Name and address of the applicant

John Henry Sharp
Coombe Cottage,
Berendens Lane
Great Warley, Essex CM13 3JB GB

(740) Name and address of the representative

A.W. Metz & Co. AG
Kreuzbühlstrasse 8
8008 Zürich CH

(511) The International Classification of Goods and Services for the Purposes of the Registration of Marks (Nice Classification) and the list of goods and services classified according thereto
Articoli di abbigliamento, scarpe, cappelleria.

Sounds like



SEARCH BY

Brand

Names

Numbers

Dates

Class

Country

Text

P= ▼

wwf

Image Class

=

e.g. 05.07.13, apple AND tree

Goods/Services

=

e.g. footwear, comput*

search 🔍

CURRENT SEARCH

Over 740,000 results



Narrow down

searches ▾ records ▾

FILTER BY

Source Image Type Status Origin App. Year * Expiration *

AE TM	5,087	AU TM	33,155	BH TM	1,275	BN TM	614	BT TM	173
BW TM	578	CA TM	35,193	CH TM	7,623	CL TM	9,714	CR TM	4,310
DE TM	35,999	DK TM	47,005	EE TM	725	EG TM	801	IT TM	37,237
EM TM	28,968	ES TM	13,555	GE TM	526	GH TM	589	KR TM	44,450
GM TM	119	ID TM	12,883	IS TM	3,393	IT TM	1,512		
JO TM	2,145	JP TM	40,022	KE TM	1,633	KH TM	2,385		

Display: List ▾ Sort: Value - asc ▾

filter ▾

Japanese Trademarks

Italian Trademarks

Still over 77,000 results

searches ▾ records ▾

FILTER BY

Source Image **Type** Status Origin App. Year * Expiration *

WORD	28,409	STYLIZED	12,918	FIGURA	6,072
Combined	29,696	3D	154	COLOUR	10
SOUND	0	POSITION	0	SCENT	0
TASTE	0	MOVEMENT	0	Unknow	0

Display: List ▾

filter ▾

- Holder Country
- Designation
- Reg. Year
- Image Class
- Holder
- Nice Cl.

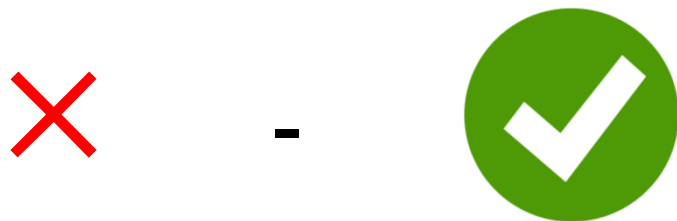


GRACECHAPEL
WWW.GRACECHAPEL.CO

MACHINE WASH COLD DRY NO. 6 EASY
TUMBLE DRY LOW DRY NO. 180W



Shirt - **SHI**_R**T**



searches ▾ records ▾

FILTER BY

- Source
- Image
- Type
- Status
- Origin
- App. Year *
- Expiration *
- Holder Country *

WORD	21,800,819	STYLIZED	1,527,997	FIGURATIVE	3,134,718	Combined	14,155,735
3D	31,456	COLOUR	5,401	SOUND	1,250	POSITION	207
SCENT	25	TASTE	11	MOVEMENT	65	Unknown	541,839

Display: List ▾

filter ▾



GERMIPASTO

Image search

SEARCH BY Brand Names Numbers Dates Class Country

Text = e.g. wipo OR ompl, "intel", ompl-


Image Class = e.g. 05.07.13, apple AND tree

Goods/Services = e.g. footwear, comput*

search

FILTER BY Source Image Status Origin App. Year * Expiration *

Pick an image



edit delete

Pick a strategy

- Concept
- Shape
- Color
- Composite

Pick an image type

Verbal	541,119
Nonverbal	270,673
Combined	3,202,031
Unknown	345,246

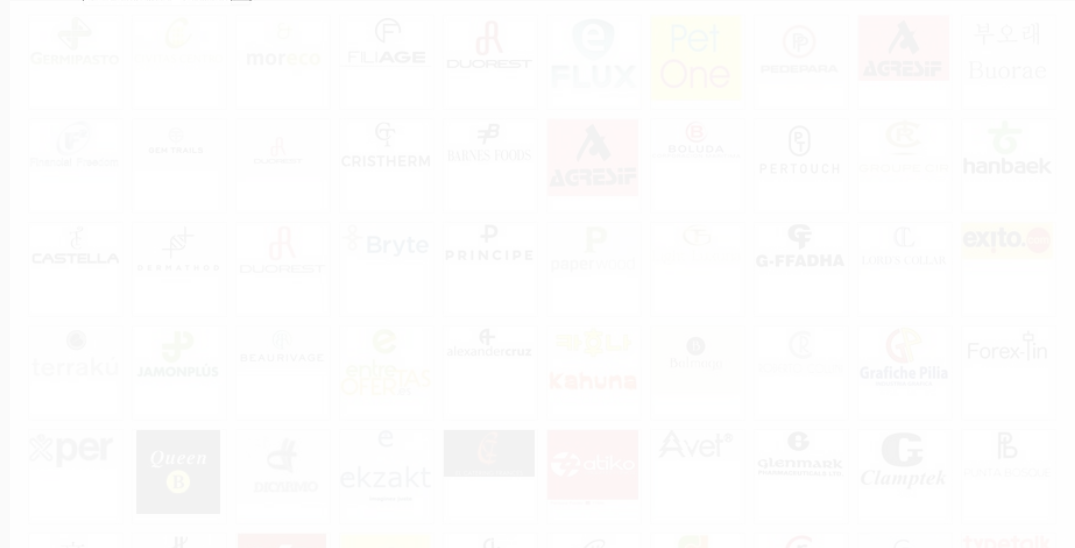
filter

CURRENT FILTER
IMAGE:Concept *

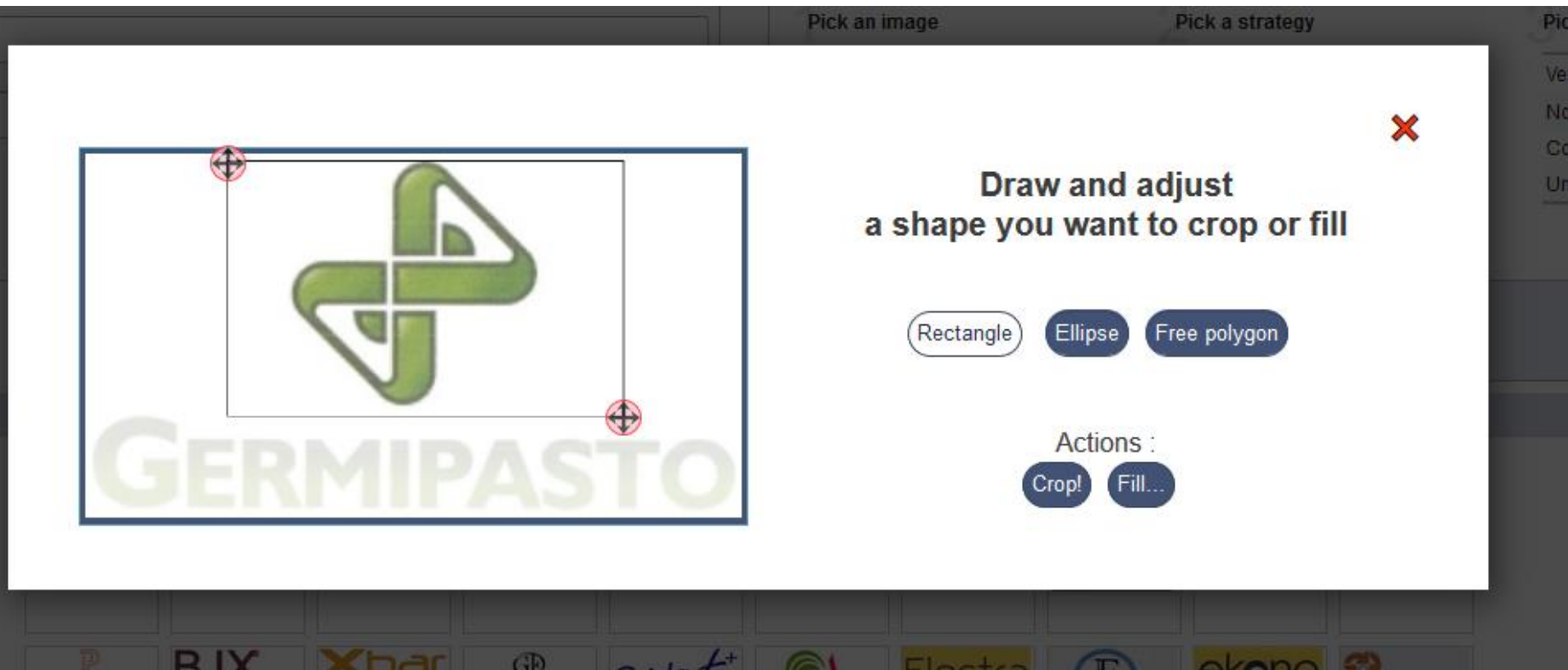
1 - 60 / 4,359,069 TMview

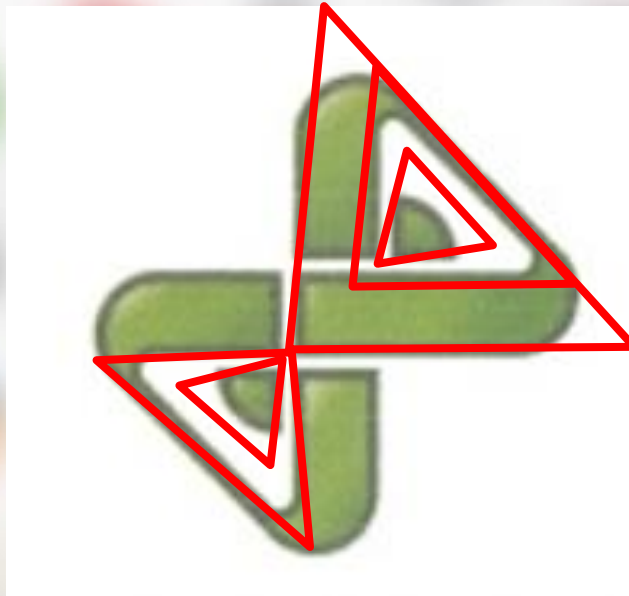
Display: 60

Sort by Relevance - desc



Image





Add a classification

SEARCH BY **Brand** Names Numbers Dates Class Country

Text = e.g. wipo OR omp, *ntel*, omp-

Image Class = infini

Goods/Services = VC.24.17.08: Symbol of *infinity*
US.24.17.12: *Infinity* symbol

search

1 - 60 / 9,432 TMview

Sort by Relevance - desc

Display: 60 per page

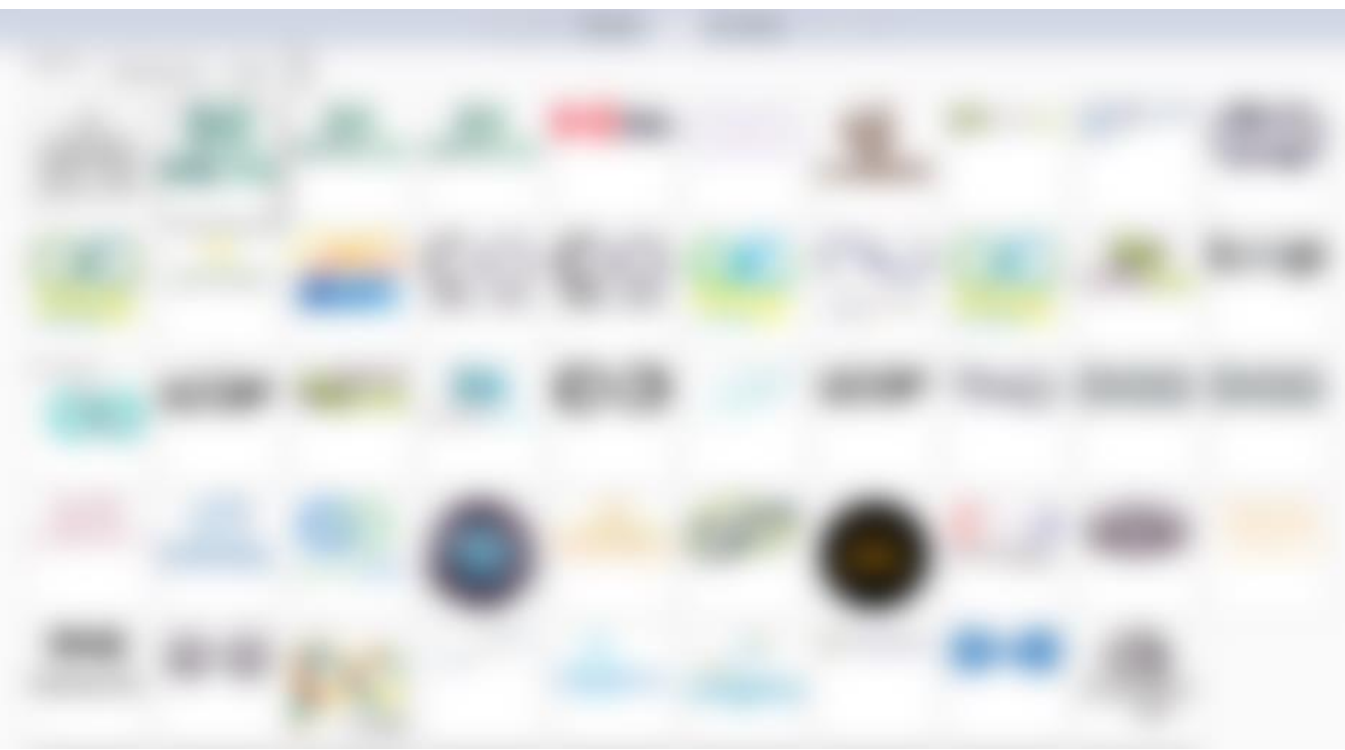
FILTER

Pick a

edit

CURRENT

SOURCE:





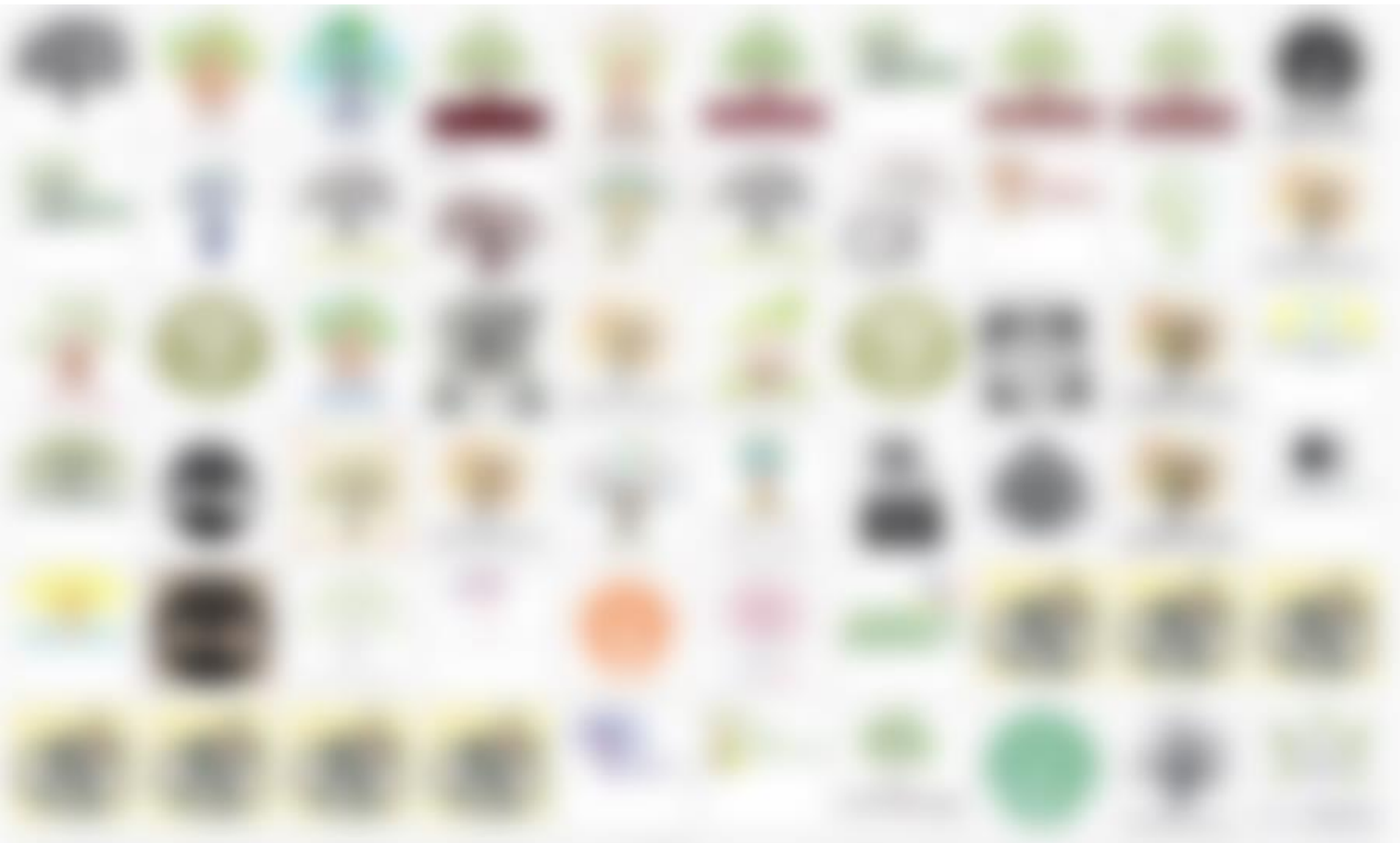
Artificial intelligence

WIPO
WORLD
INTELLECTUAL PROPERTY
ORGANIZATION

Better precision

- Well defined concepts
- Figurative only





WIPO FOR OFFICIAL USE ONLY





FILTER BY

- Source
- Image
- Type
- Status
- Origin
- App. Year *
- Expiration *
- Holder Country *

US	10,050,254	FR	3,260,493	DE	2,940,894	IT	1,686,604	AU	1,329,983	MX	1,269,188	ES	1,217,394
CA	1,091,622	CH	855,784	GB	788,019	ID	744,347	CN	648,978	JP	602,234	TH	499,613
VN	406,053	MY	346,188	NZ	304,269	NL	302,231	SG	293,144	PH	274,153	DK	242,321
UA	217,200	SE	173,676	KR	172,510	CR	159,388	MA	134,634	AT	123,654	UY	120,079
BE	116,415	HK	113,293	TW	94,870	ZA	94,727	AE	91,388	LU	79,858	EG	71,777
IN	68,876	IE	67,347	FI	62,398	JO	59,018	TR	58,648	VG	55,776	PL	54,956
BR	48,678	RU	47,530	PT	44,326	IL	40,924	NO	37,675	AR	37,500	TN	37,105

Display: List

Sort: Count - desc
Count - asc
Count - desc
Value - asc
Value - desc

filter

FILTER BY

Source Image Type Status Origin App. Year * Expiration * Holder Country *

AD	1,662	AE	91,388	AF	1,371	AG	892	AI	650	AL	700	AM	1,895	AN	5,030
AO	272	AR	37,500	AS	415	AT	123,654	AU	1,329,983	AW	505	AZ	419	BA	1,123
BB	9,764	BD	681	BE	116,415	BF	33	BG	20,047	BH	4,992	BJ	68	BM	18,864
BN	10,082	BO	374	BR	48,678	BS	9,756	BT	448	BW	2,398	BX	1,392	BY	4,142
BZ	2,402	CA	1,091,622	CB	57	CC	39	CD	184	CE	206	CF	53	CG	88
CH	855,784	CI	418	CK	529	CL	21,204	CM	288	CN	648,978	CO	20,129	CR	159,388
CS	1,265	CU	4,402	CV	44	CW	1,957	CY	25,721	CZ	30,842	DD	3,395	DE	2,940,894
DK	242,321	DL	182	DM	268	DO	3,807	DT	442	DZ	22,028	EA	57	EC	2,699
EE	35,661	EG	71,777	EK	115	EM	1,480	EN	3,490	EO	52	ES	1,217,394	ET	364
EU	137	FI	62,398	FJ	675	FO	198	FR	3,260,493	GA	86	GB	788,019	GBR	50
GD	70	GE	19,574	GG	1,486	GH	4,879	GI	4,656	GL	259	GM	484	GN	97
GP	97	GQ	39	GR	19,903	GT	9,684	GU	445	GY	373	HK	113,293	HN	2,970
HR	8,572	HT	402	HU	19,300	IC	115	ID	744,347	IE	67,347	IL	40,924	IM	3,460
IN	68,876	IO	958	IQ	428	IR	3,451	IS	6,859	IT	1,686,604	JC	45	JE	2,740
JM	2,294	JO	59,018	JP	602,234	KE	35,513	KG	126	KH	21,722	KN	1,070	KO	170
KP	3,558	KR	172,510	KS	44	KW	19,110	KY	28,167	KY1	131	KYY	53	KZ	32,712
LA	2,892	LB	8,340	LC	613	LI	23,268	LK	3,076	LR	840	LT	6,380	LU	79,858
LV	5,506	LY	286	MA	134,634	MC	10,564	MD	27,637	ME	356	MG	10,353	MH	682
MK	17,472	ML	69	MM	162	MN	15,494	MO	1,099	MP	146	MQ	100	MR	786
MT	12,749	MU	11,472	MV	68	MW	4,455	MX	1,269,188	MY	346,188	MZ	12,949	NA	3,877
NC	100	ND	56	NE	159	NG	1,276	NI	1,139	NL	302,231	NN	47	NO	37,675
NP	160	NS	36	NZ	304,269	OM	12,503	OO	336	PA	23,530	PE	5,588	PF	300
PG	4,316	PH	274,153	PK	3,560	PL	54,956	PR	9,841	PS	858	PT	44,326	PY	1,430
QA	7,111	RC	351	RE	185	RH	1,286	RO	12,165	RS	27,178	RU	47,530	RW	51
SA	20,983	SB	52	SC	2,614	SD	4,793	SE	173,676	SG	293,144	SH	391	SI	12,307
SK	8,750	SL	104	SM	1,217	SN	329	SO	52	SR	172	SU	803	SV	5,491
SX	73	SY	3,566	SZ	1,551	TC	1,001	TG	167	TH	499,613	TN	37,105	TO	176
TR	58,648	TS	69	TT	1,107	TW	94,870	TZ	495	UA	217,200	UC	39	UG	322
UK	28,815	UM	70	US	10,050,254	UY	120,079	UZ	302	VA	75	VC	219	VE	5,691
VG	55,776	VI	3,962	VM	36	VN	406,053	VU	384	WO	37	WS	1,670	XO	462
XP	16,492	XX	9,926	YE	938	YI	259	YU	6,319	ZA	94,727	ZB	587	ZM	386
ZW	15,147	ZZ	36,566												



FILTER BY

Source

Image

Type

Status

Origin

App. Year *

Expiration *

Holder Country *

AE TM	6,707	AU TM	33,534	BH TM	454	BN TM	2,198	BT TM	2,433	BW TM	1,095
CA TM	19,197	CH TM	2,462	CL TM	0	CR TM	1,726	DE TM	11,171	DK TM	606
DZ TM	885	EE TM	99	EG TM	1,548	EM TM	61,880	ES TM	1,368	FR TM	8,911
GE TM	320	GH TM	485	GM TM	330	ID TM	19,509	IL TM	0	IS TM	3,263
IT TM	0	JO TM	1,893	JP TM	0	KE TM	2,875	KH TM	9,267	KR TM	0
KW TM	610	KZ TM	1,352	LA TM	5,359	MA TM	910	MD TM	208	MG TM	727
MK TM	149	MN TM	6,716	MW TM	323	MX TM	8,746	MY TM	26,414	MZ TM	2,099
NA TM	1,492	NZ TM	7,128	OM TM	907	PG TM	903	PH TM	16,793	RS TM	340
SG TM	24,515	SD TM	427	SZ TM	1,176	TH TM	6,078	TN TM	1,800	TO TM	147
UA TM	1,250	US TM	276,622	UY TM	1,797	VN TM	9,922	WS TM	303	ZW TM	828
WO AO (LIS)	0	WO TM	48,701	WO 6TER	20	WHO INN	0				

Display: List ▾

Sort: Value - asc ▾

filter ▾

CURRENT FILTER



FILTER BY

Source

Image

Type

Status

Origin

App. Year *

Expiration *

Holder Country *

AE TM	207,574	AU TM	1,766,331	BH TM	51,668	BN TM	49,028	BT TM	19,777	BW TM	22,024
CA TM	1,709,036	CH TM	437,740	CL TM	602,514	CR TM	338,520	DE TM	2,145,647	DK TM	22,024
DZ TM	39,532	EE TM	61,621	EG TM	130,405	EM TM	1,813,490	ES TM	995,825	FR TM	2,876,483
GE TM	44,122	GH TM	31,225	GM TM	8,707	ID TM	985,419	IL TM	293,782	IS TM	111,860
IT TM	1,229,433	JO TM	155,030	JP TM	2,271,193	KE TM	95,165	KH TM	103,888	KR TM	3,812,975
KW TM	33,213	KZ TM	68,724	LA TM	50,518	MA TM	174,473	MD TM	43,706	MG TM	20,858
MK TM	35,492	MN TM	76,654	MW TM	25,779	MX TM	1,613,557	MY TM	895,747	MZ TM	45,944
NA TM	67,185	NZ TM	694,630	OM TM	75,436	PG TM	32,888	PH TM	502,294	RS TM	56,419
SG TM	737,907	SD TM	23,762	SZ TM	20,541	TH TM	986,550	TN TM	95,052	TO TM	3,503
UA TM	275,702	US TM	10,265,995	UY TM	271,670	VN TM	506,696	WS TM	8,071	ZW TM	74,464
WO AO (LIS)	1,130	WO TM	1,118,460	WO 6TER	3,583	WHO INN	10,223				

French Trademarks

Display: List

Sort: Value - asc

filter

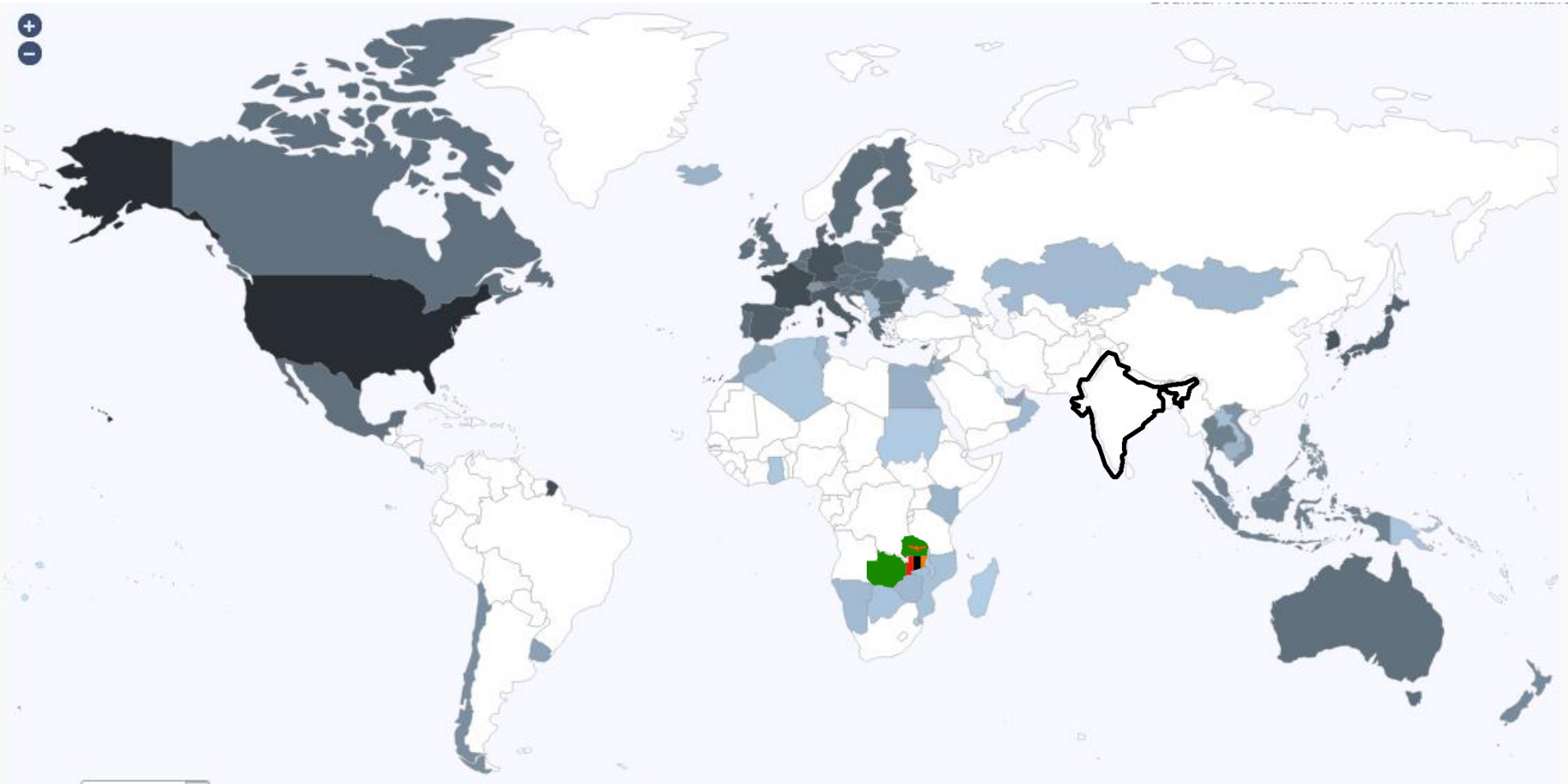
FILTER BY

Source Image Type Status Origin App. Year * Expiration * Holder Country *

searches records

FR	2,592,861	US	102,561	GB	40,888	JP	18,306	DE	15,425	CH	14,938	CN	8,911	BE	8,351
NL	7,400	SE	7,057	LU	5,696	ES	5,236	CA	4,216	HK	3,871	IT	3,804	DK	3,521
XX	3,301	KR	2,332	MC	2,139	AU	1,939	PT	1,862	FI	1,660	IE	1,523	TW	1,336
IL	1,107	NO	1,096	BR	1,050	ZA	726	SG	710	MX	585	VG	530	MA	527
PA	502	AT	429	TN	417	GR	408	NZ	396	DD	386	AR	372	MU	363
AE	356	TH	355	LI	355	IN	339	CU	338	RU	325	LB	325	AD	269
CY	258	BM	253	TR	243	CL	209	SA	196	PL	196	ID	190	MY	189
BS	180	CO	146	IR	143	VE	128	BB	122	CI	121	SN	114	DZ	114
SU	107	MT	107	BG	105	KY	90	AN	90	RE	88	MQ	86	HU	85
GP	83	GI	80	EG	76	MG	75	IS	59	RO	56	VN	55	LK	55
CZ	51	PE	49	DO	47	GA	46	CM	46	UY	45	PH	43	SC	42
EE	38	TT	35	GY	33	BZ	32	KW	31	QA	30	CR	28	KP	27
JM	27	LR	26	JO	26	UA	25	CG	25	PY	23	AM	23	MV	22
JE	22	AF	22	PF	21	SY	19	NG	19	IM	19	EC	19	YU	18
TG	17	SM	17	HT	17	CD	17	CS	16	SI	15	NC	15	BJ	15
ML	14	LV	14	LT	14	LC	14	CW	14	PK	13	HR	13	AG	13
VU	12	NE	12	GH	12	AL	12	WS	11	BH	11	GT	10	GM	10
ZW	9	KH	9	KE	9	NA	8	MR	8	YT	7	GG	7	GE	7
DJ	7	NI	6	MO	6	OM	5	GN	5	FJ	5	BN	5	ST	4
SK	4	RS	4	MK	4	MD	4	IQ	4	GD	4	CF	4	BW	4
YE	3	SZ	3	SR	3	NR	3	LA	3	KZ	3	AW	3	AO	3
AI	3	VC	2	UZ	2	UG	2	SV	2	MH	2	KM	2	ET	2
CK	2	BY	2	BD	2	ZM	1	SX	1	SL	1	SD	1	RW	1
PM	1	PG	1	NP	1	MZ	1	MS	1	MN	1	KN	1	HN	1
GF	1	FK	1	BO	1	BF	1	BA	1	AZ	1				

Coverage map



The Vienna Classification Assistant

https://www3.wipo.int/bnd-api/vienna-classification-assistant/

80%



WIPO
IP PORTAL

MENU

Vienna Classification Assistant

Covid-19 Update X

HELP

ENGLISH

LOGIN

WIPO

↓
Drop your image here



WIPO
WORLD
INTELLECTUAL PROPERTY
ORGANIZATION

WIPO FOR OFFICIAL USE ONLY



watercolor-tree-silhouette-5369139_1920(1).png

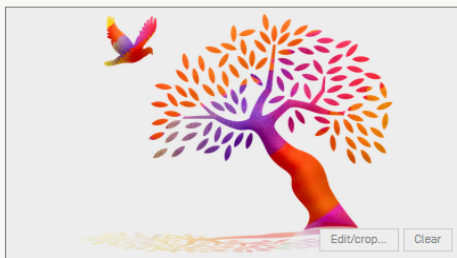
Edit/crop... Clear

Quick add...

Select suggested sections

or start a manual selection on the right.

1 CELESTIAL BODIES, NATURAL PHENOMENA, GEOGRAPHICAL MAPS	2 **** HUMAN BEINGS	3 *** ANIMALS	4 * SUPERNATURAL, FABULOUS, FANTASTIC OR UNIDENTIFIABLE BEINGS	5 ***** PLANTS
6 LANDSCAPES	7 CONSTRUCTIONS, STRUCTURES FOR ADVERTISEMENTS, GATES 0...	8 FOODSTUFFS	9 * TEXTILES, CLOTHING, SEWING ACCESSORIES, HEADWEAR, FOOTWEAR	10 TOBACCO, SMOKERS' REQUISITES, MATCHES, TRAVEL GOODS, FANS, TOIL...
11 HOUSEHOLD UTENSILS	12 FURNITURE, SANITARY INSTALLATIONS	13 LIGHTING, WIRELESS VALVES, HEATING, COOKING OR REFRIGERATING EQUIPME...	14 IRONMONGERY, TOOLS, LADDERS	15 MACHINERY, MOTORS, ENGINES
16 TELECOMMUNICATIONS, SOUND RECORDINGS OR REPRODUCTION, COMPUTER...	17 HOROLOGICAL INSTRUMENTS, JEWELRY, WEIGHTS AND MEASURES	18 TRANSPORT, EQUIPMENT FOR ANIMALS	19 CONTAINERS AND PACKING, REPRESENTATIONS OF MISCELLANEOUS PRODUCTS	20 WRITING, DRAWING OR PAINTING MATERIALS, OFFICE REQUISITES, STATIONERY A...
21 GAMES, TOYS, SPORTING ARTICLES, ROUNDABOUTS	22 MUSICAL INSTRUMENTS AND THEIR ACCESSORIES, MUSIC ACCESSORIES, BELLS,...	23 ARMS, AMMUNITION, ARMOUR	24 * HERALDRY, COINS, EMBLEMS, SYMBOLS	25 ORNAMENTAL MOTIFS, SURFACES OR BACKGROUNDS WITH ORNAMENTS
26 * GEOMETRICAL FIGURES AND SOLIDS	27 FORMS OF WRITING, NUMERALS	28 INSCRIPTIONS IN VARIOUS CHARACTERS	29 *** COLOURS	



watercolor-tree-silhouette-5369139_1920(1).png

Quick add...

Select suggested sections

or start a manual selection on the right.

1 CELESTIAL BODIES, NATURAL PHENOMENA, GEOGRAPHICAL MAPS	2 ★★★★ HUMAN BEINGS	3 ★★★ ANIMALS	4 ★ SUPERNATURAL, FABULOUS, FANTASTIC OR UNIDENTIFIABLE BEINGS	5 ★★★★ PLANTS
6 LANDSCAPES	7 CONSTRUCTIONS, STRUCTURES FOR ADVERTISEMENTS, GATES 0...	8 FOODSTUFFS	9 ★ TEXTILES, CLOTHING, SEWING ACCESSORIES, HEADWEAR, FOOTWEAR	10 TOBACCO, SMOKERS' REQUISITES, MATCHES, TRAVEL GOODS, FANS, TOIL...
11 HOUSEHOLD UTENSILS	12 FURNITURE, SANITARY INSTALLATIONS	13 LIGHTING, WIRELESS VALVES, HEATING, COOKING OR REFRIGERATING EQUIPME...	14 IRONMONGERY, TOOLS, LADDERS	15 MACHINERY, MOTORS, ENGINES
16 TELECOMMUNICATIONS, SOUND RECORDINGS OR REPRODUCTION, COMPUTER...	17 HOROLOGICAL INSTRUMENTS, JEWELRY, WEIGHTS AND MEASURES	18 TRANSPORT, EQUIPMENT FOR ANIMALS	19 CONTAINERS AND PACKING, REPRESENTATIONS OF MISCELLANEOUS PRODUCTS	20 WRITING, DRAWING OR PAINTING MATERIALS, OFFICE REQUISITES, STATIONERY A...
21 GAMES, TOYS, SPORTING ARTICLES, ROUNDABOUTS	22 MUSICAL INSTRUMENTS AND THEIR ACCESSORIES, MUSIC ACCESSORIES, BELLS,...	23 ARMS, AMMUNITION, ARMOUR	24 ★ HERALDRY, COINS, EMBLEMS, SYMBOLS	25 ORNAMENTAL MOTIFS, SURFACES OR BACKGROUNDS WITH ORNAMENTS
26 ★ GEOMETRICAL FIGURES AND SOLIDS	27 FORMS OF WRITING, NUMERALS	28 INSCRIPTIONS IN VARIOUS CHARACTERS	29 ★★★ COLOURS	



watercolor-tree-silhouette-5369139_1920(1).png

Edit/crop... Clear

Quick add...

Select suggested sections

or start a manual selection on the right.

1 CELESTIAL BODIES, NATURAL PHENOMENA, GEOGRAPHICAL MAPS	2 ★★★★ HUMAN BEINGS	3 ★★★ ANIMALS	4 ★ SUPERNATURAL, FABULOUS, FANTASTIC OR UNIDENTIFIABLE BEINGS	5 ★★★★★ PLANTS
6 LANDSCAPES	7 CONSTRUCTIONS, STRUCTURES FOR ADVERTISEMENTS, GATES 0...	8 FOODSTUFFS	9 ★ TEXTILES, CLOTHING, SEWING ACCESSORIES, HEADWEAR, FOOTWEAR	10 TOBACCO, SMOKERS' REQUISITES, MATCHES, TRAVEL GOODS, FANS, TOIL...
11 HOUSEHOLD UTENSILS	12 FURNITURE, SANITARY INSTALLATIONS	13 LIGHTING, WIRELESS VALVES, HEATING, COOKING OR REFRIGERATING EQUIPMEN...	14 IRONMONGERY, TOOLS, LADDERS	15 MACHINERY, MOTORS, ENGINES
16 TELECOMMUNICATIONS, SOUND RECORDINGS OR REPRODUCTION, COMPUTER...	17 HOROLOGICAL INSTRUMENTS, JEWELRY, WEIGHTS AND MEASURES	18 TRANSPORT, EQUIPMENT FOR ANIMALS	19 CONTAINERS AND PACKING, REPRESENTATIONS OF MISCELLANEOUS PRODUCTS	20 WRITING, DRAWING OR PAINTING MATERIALS, OFFICE REQUISITES, STATIONERY A...
21 GAMES, TOYS, SPORTING ARTICLES, ROUNDABOUTS	22 MUSICAL INSTRUMENTS AND THEIR ACCESSORIES, MUSIC ACCESSORIES, BELLS,...	23 ARMS, AMMUNITION, ARMOUR	24 ★ HERALDRY, COINS, EMBLEMS, SYMBOLS	25 ORNAMENTAL MOTIFS, SURFACES OR BACKGROUNDS WITH ORNAMENTS
26 ★ GEOMETRICAL FIGURES AND SOLIDS	27 FORMS OF WRITING, NUMERALS	28 INSCRIPTIONS IN VARIOUS CHARACTERS	29 ★★★ COLOURS	



watercolor-tree-silhouette-5369139_1920(1).png

Quick add...

Select suggested sections

or start a manual selection on the right.

Back (Esc.)



5 - PLANTS

CLASSIF.	DESC. Search / filter...	RELEVANCE
5.1.16	Trees or bushes in stylized form Suggested	***
5.1.5	One tree or one bush Suggested	***
5.1.11	Deciduous trees	**
5.1.3	Trees or bushes of some other shape	**
5.1.2	Trees or bushes of oblong shape (poplars)	**
5.1.15	Trees or bushes in blossom or bearing fruit	**
5.1.4	Trees or bushes without leaves	**
5.3.18	More than four leaves, scattered leaves, bunches of leaves <small>Note : Not including surfaces or backgrounds covered with a repeated figurative element composed of leaves (25.7.25).</small>	*
5.1.21	Large branches, branches without leaves or without needles	*
5.11.2	Roots, radicles, ginsengs	*
5.11.1	Algae, seaweeds and other plants	*
5.3.11	Other leaves	*
5.9.21	Other vegetables	*
5.5.22	Several flowers [except 5.5.7 , 5.5.8 , 5.5.18 and 5.5.23]	*
5.5.20	Stylized flowers	*
5.5.19	Other flowers, blossoms <small>Note : Including flowers or blossoms of trees (cherry trees, peach trees, apple trees) and of bushes. Note : Including flowers of protea and streitizia.</small>	*
5.13.1	Crowns of leaves, of flowers or of fruits	*
5.5.23	Groups of flowers of different kinds, bunches, sheaves or baskets of flowers, flower beds, scattered flowers	*
5.3.20	Other branches with leaves, with or without fruit	*
5.1.13	Trees or bushes with roots	*
5.13.4	Crossed branches	
5.13.3	Crossed palms	
5.11.20	Plants in pots, in ornamental stands, in window boxes or in tubs	



watercolor-tree-silhouette-5369139_1920[1].png

Quick add...

Back [Esc]



3 - ANIMALS

Note : Heads of quadrupeds and of quadrumana will be placed in the appropriate sections of divisions 3.1 to 3.5 and not in [Other parts of the bodies of quadrupeds or of quadrumana].
 Note : Written or typographical matter representing an animal is classified under [Letters or numerals representing an animal or a part of an animal's body].

CLASSIF.	DESC. Search / filter...	RELEVANCE
✓ 3.7.24	Birds or bats stylized	★★
✓ 3.7.11	Doves, pigeons, turtle-doves	★★
3.7.21	Other birds	*
3.7.16	Birds in flight or with outspread wings	*
3.11.24	Animals of division <u>3.11</u> stylized	*
3.7.22	Hummingbirds	*
3.7.13	Sparrows or other passerine birds	*
3.7.9	Albatross, cormorants, gulls, pelicans	*
3.7.6	Ducks, geese, swans	*
3.13.1	Butterflies	
3.11.12	Toads, frogs, tadpoles	
3.9.19	Coral, coral reef	
3.7.26	Groups of birds or bats	
3.7.20	Nests, bird cages Note : Including nests with eggs. Eggs alone are classified in 8.7.11.	
3.7.17	Wings, stylized or not Note : Including wings constituting a symbol or an emblem. Note : Not including wheels or wheel segments with wings [15.7.17], staves with wings [24.11.3] and Mercury's helmet [with wings] [24.11.14].	
3.7.10	Swallows	
3.7.7	Storks, herons, cranes, flamingos or other waders	
3.7.4	Turkeys, pheasants, peacocks, hoopoes	
3.7.3	Cocks, hens, chickens	
3.7.1	Eagles, falcons, vultures, condors	

Selected

CLASSIF.	DESCRIPTION
5.1.16	Trees or bushes in stylized form
5.1.3	Trees or bushes of some other shape
5.1.5	One tree or one bush
3.7.24	Birds or bats stylized
3.7.11	Doves, pigeons, turtle-doves

[Rows can be rearranged before export, try dragging them]

Export as CSV	Copy to clipboard	Clear selected list
---------------	-------------------	---------------------

WIPO IP Portal

Perform a trademark search by text or image in brand data from multiple national and international sources, including trademarks, appellations of origin and official emblems. V: 2021-01-22 13:2

Data from India available Close to 2 million records added	Data from San Marin available Over 3,700 records added	Data from Albania available Over 18,000 records added	Data from Ukraine available Over 269,000 records added	Data from Serbia available Over 56,000 records added	Data from Kazakhstan available Over 67,000 records added	Data from Bhutan available Over 19,000 records added	Free webinars INN searches in the Global Brand Database Webina
---	---	--	---	---	---	---	---

SEARCH BY

Brand Names Numbers Dates Class Country

Text =

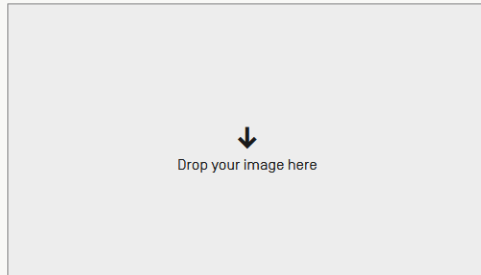
Image Class =

Goods/Services =

FILTER BY

Source Image Type Status Origin App. Year * Expiration *

AE TM	218,835	AL TM	19,075	AU TM	1,822,336	BH TM	106,233	BN TM	50,285	BT TM	20,090
BW TM	38,034	CA TM	1,757,703	CH TM	450,121	CL TM	602,514	CR TM	346,195	DE TM	2,200,164
DK TM	296,274	DZ TM	39,531	EE TM	62,624	EG TM	132,714	EM TM	1,915,498	ES TM	1,041,839
FR TM	2,948,315	GE TM	45,371	GH TM	31,225	GM TM	8,707	ID TM	985,419	IL TM	301,274
IN TM	1,995,796	IS TM	116,967	IT TM	1,229,433	JO TM	161,590	JP TM	2,271,193	KE TM	95,165







<https://www.wipo.int/reference/en/branddb/webinar>

Global Brand Database Webinars

WIPO offers free online seminars (webinars) to deliver information, training and updates on the [Global Brand Database](#). If you or your organization would be interested in a webinar on a specific topic please [contact us](#).

Register for upcoming webinars

All webinars

Practical cases in the Global Brand Database

February 4, 2021 (English) 08:00 Geneva time

Online registration

The Brand Database: how to perform searches

March 4, 2021 (English) 17:30 Geneva time

Online registration

Global Design Database: webinar

■ Practical cases

February 11 at 8:00 AM CET

<https://www.wipo.int/reference/en/designdb/webinar/index.html>

PATENTSCOPE webinar

■ Translation tools

February 16 or 18

<https://www.wipo.int/patentscope/en/webinar/>



**ASK MORE
QUESTIONS**





gbd@wipo.int

WIPO FOR OFFICIAL USE ONLY

WIPO
WORLD
INTELLECTUAL PROPERTY
ORGANIZATION