

Commercialization of Research Results @ AUTH

Technology Transfer Office
Aristotle University of Thessaloniki
Sofia Tsakiri

ROVING SEMINAR H.I.P.O. – W.I.P.O.

Thessaloniki, 11.04.2019

Aristotle University



- **11** Faculties
- **41** Schools
- **131** Departments
- **311** Laboratories
- **23** Study rooms
- **48** Libraries
- **49** Computer rooms
- **1** University & **4** Affiliated Hospitals
- **61** Clinics
- **CIRI AUTH** (Center for Interdisciplinary Research and Innovation)
- **84.539** Students
- **1.791** Academic Staff
- **1.092** Staff



Research Projects 2014-2018

5.702	Active Research Projects
1.144	International Partners
3.745	Academic & Research Staff
7.272	External Researchers
237,7m€	Total Turnover

Research Projects (2014-2018)

Total Research Projects

5.702 Active Research Projects

€ 237,7m Turnover



Industrial Cooperation Research Projects

2.800 Projects

€ 52,1m

21,9 % (of total turnover of RC)



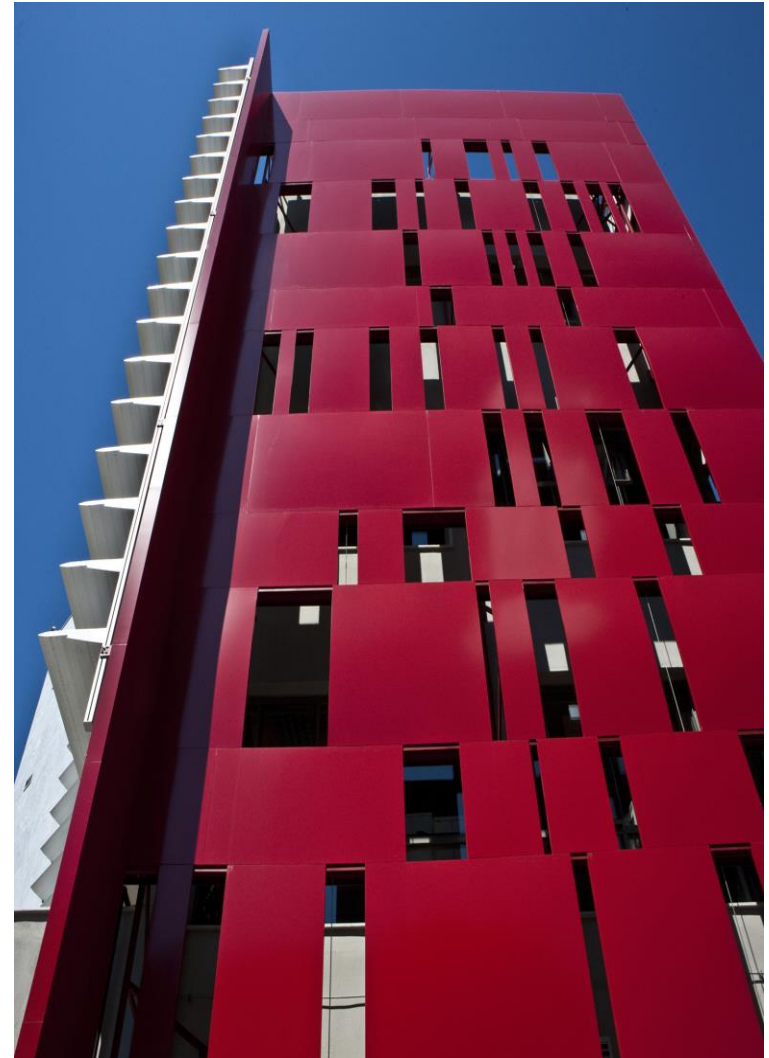
Results

44 licensing

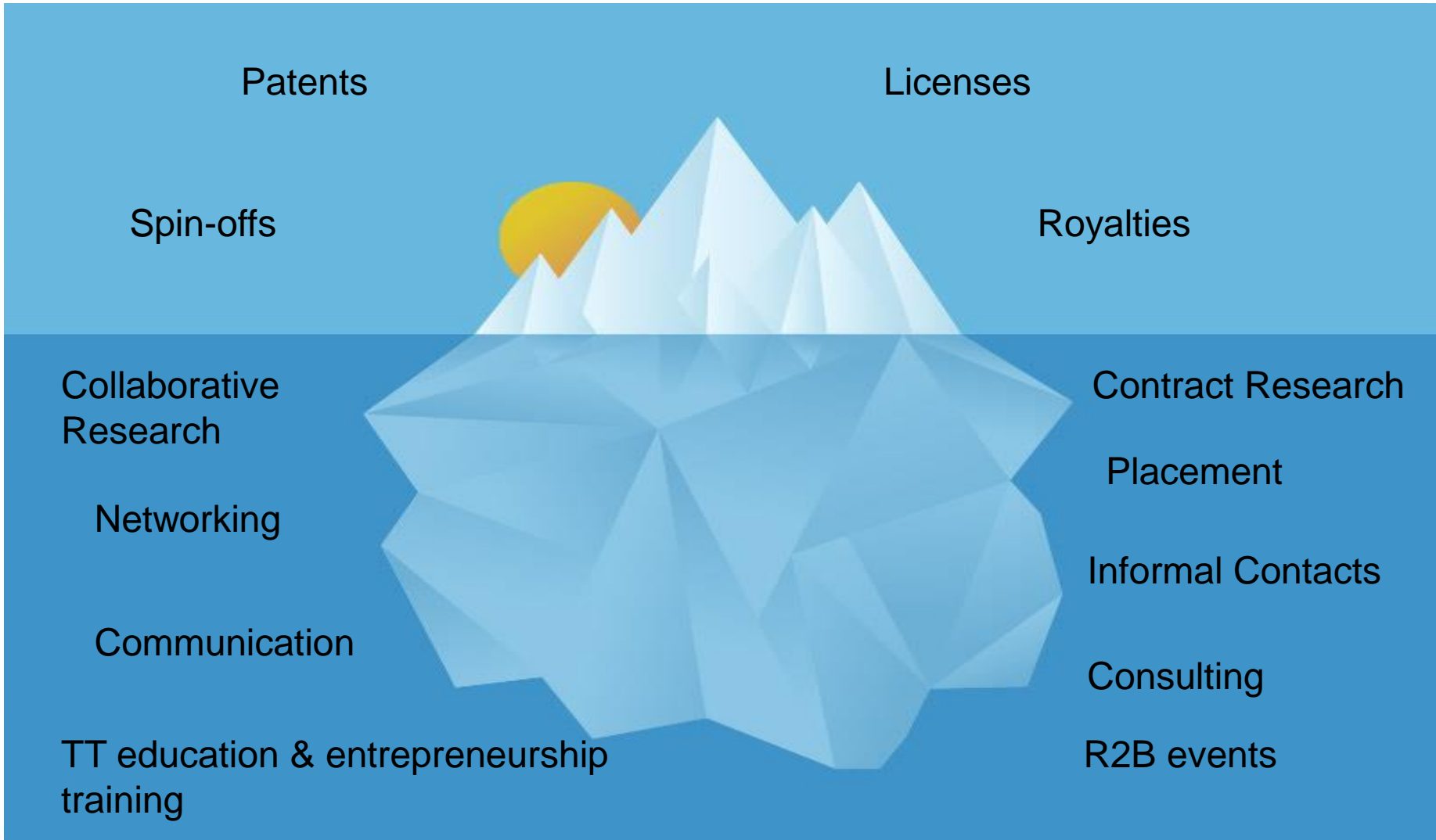
7 spin-off

The Technology Transfer Office (TTO)

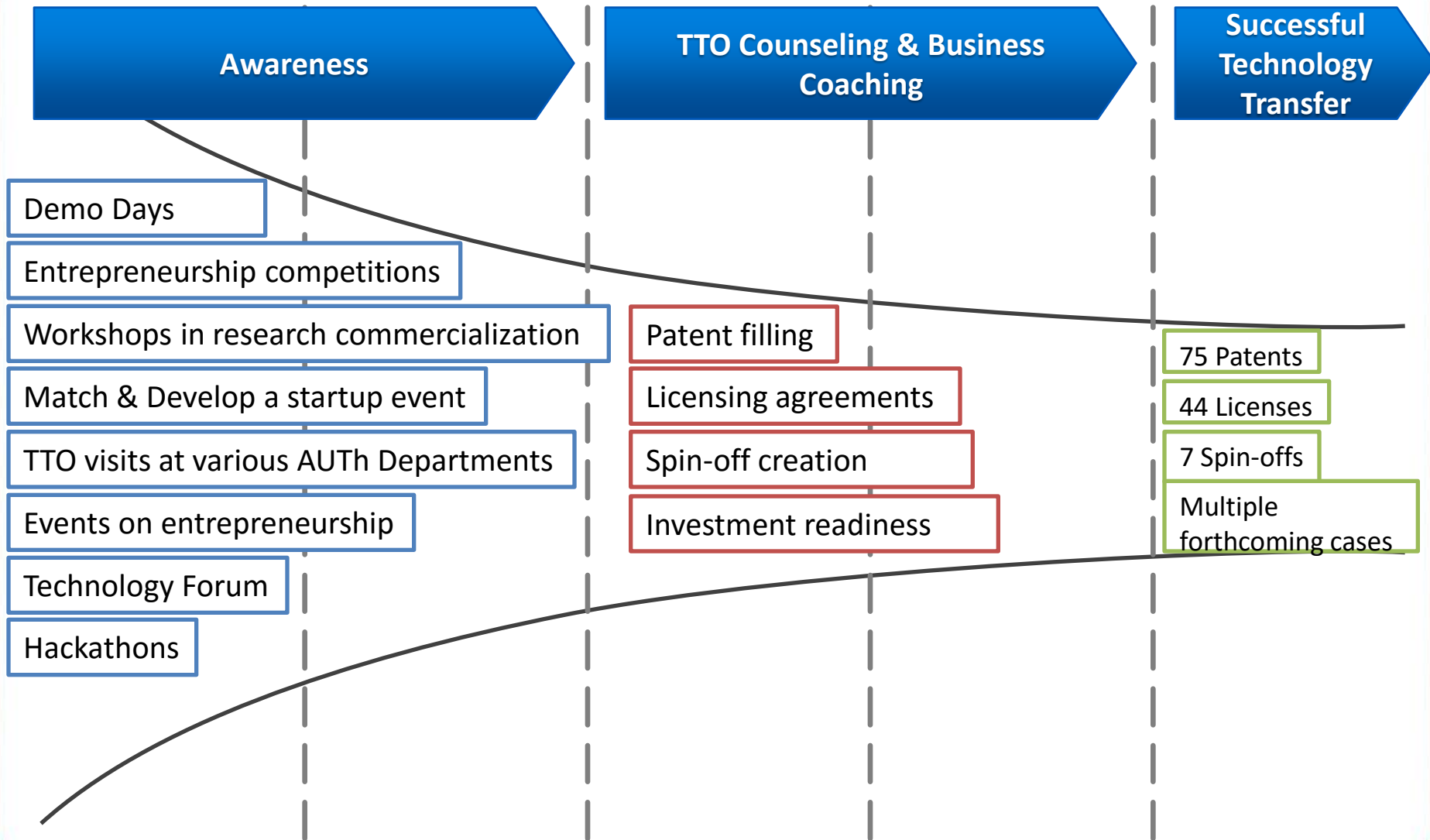
- ✓ Is the contact point between the academic community and the market
- ✓ Is responsible for:
 - **IPR management procedures**
 - Communication & dissemination of research results
 - Commercialization assessment of research results
 - Creation of spin-off companies
 - Business development and access to finance (i.e. from competitions, angel investors, VCs)
 - Network with public, private institutions and enterprises
- ✓ Operates since 2012



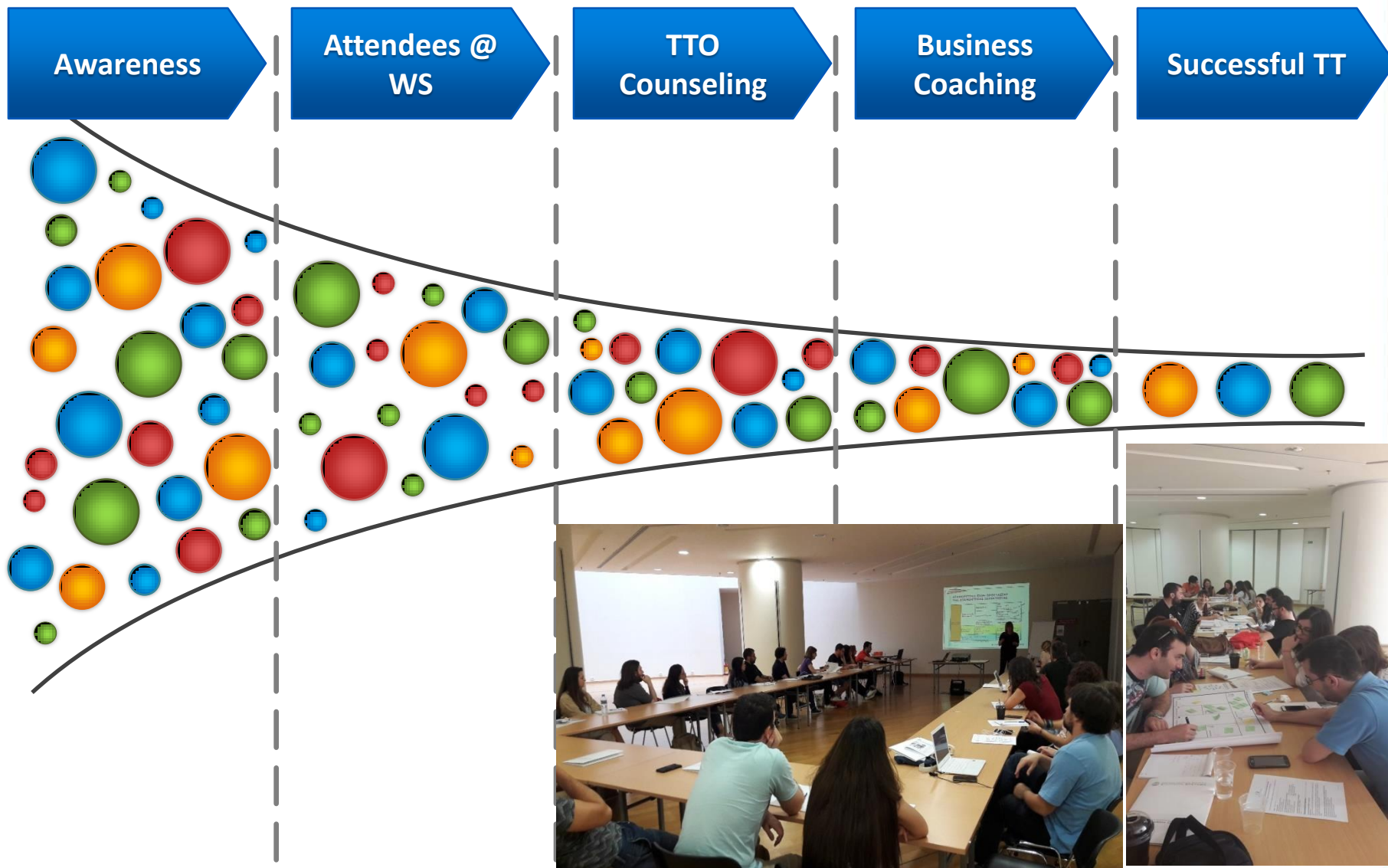
The Iceberg of Technology Transfer



Awareness on Research Commercialization

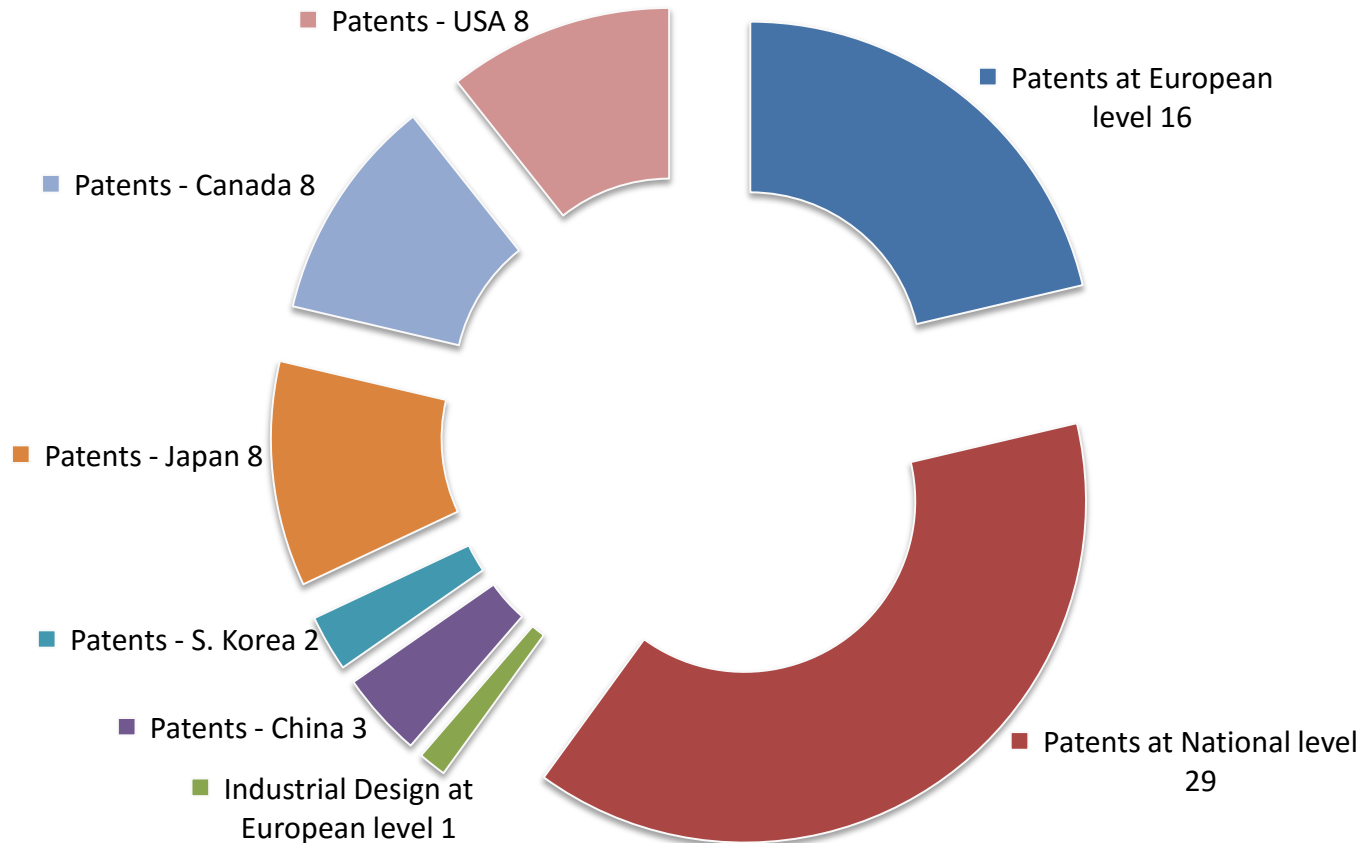


“Valorization and Innovation Workshops”



Patents of AUTh

AUTh is the first Greek university to support financially the protection of industrial property through Patents (**75** in total)



Spin-offs of AUTH

1st Generation (2007-2008)



2nd Generation (2016-2018)



€350.000 VC funding



Pending VC funding



Pending VC funding

3rd Generation (2019)



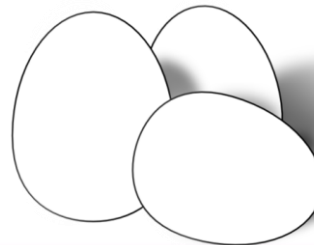
Forthcoming Spin-offs



Department of Chemistry



Department of Electrical and Computer Engineering



Department of Sports

School of Music studies



Commercialization in Practice

1. **Laboratory of Applied Thermodynamics** (4 International patents & 3 Spin-offs)
2. **Laboratory for Thin Films - Nanobiomaterials, Nanosystems & Nanometrology** (2 International patents)
3. **Animal Husbandry Laboratory** (Valorization of 3 National Patents)
4. **The Antikythera Mechanism** (Industrial Design at EU level)
5. **Health Care System “Long Lasting Memories”** (Valorization through the Research Committee of AUTH)
6. **Multidisciplinary Research & Innovation Center** (KEDEK)



Cooperations with VCs and Business Organizations





Thank you for your attention!

KE.D.E.A. Building, 3is Septemvriou

<https://rc.auth.gr/marketing/>

E-mail: research@rc.auth.gr

T: 2310 994021

 : facebook.com/authelke/

 : twitter.com/Elkeauth



RESEARCH COMMITTEE
ARISTOTLE UNIVERSITY OF THESSALONIKI