

FIND 

ACCESSING AND USING INFORMATION RESOURCES FOR THE PANDEMIC RESPONSE

WHO-WIPO-WTO workshop
28th February 2022

◆ **Stefano Ongarello,**
Director, Data Science



FIND, THE GLOBAL ALLIANCE FOR DIAGNOSTICS SEEKS TO ENSURE EQUITABLE ACCESS TO RELIABLE DIAGNOSIS AROUND THE WORLD

We connect countries and communities, funders, decisionmakers, healthcare providers and developers to spur diagnostic innovation and make testing an integral part of **sustainable, resilient health systems**

- ◆ Established in 2003 as a product development & delivery partnership
- ◆ Co-convener of the Access to COVID-19 Tools (ACT) Accelerator Diagnostic Pillar
- ◆ WHO Collaborating Centre for Laboratory Strengthening & Diagnostic Technology Evaluation
- ◆ WHO SAGE-IVD member
- ◆ ISO-certified quality management system for IVD clinical trial



2021 STRATEGY: EXPECTED IMPACT



Save 1 million lives
through accessible,
quality diagnosis



Save US\$1 billion
in healthcare costs to
patients and health systems



Empower 10+ countries
with diagnostic data to inform
policy and care

Diagnostic testing immediately emerged as a **mainstay of the pandemic response**

“ Test, test, test ”

-----◆ Tedros Adhanom Ghebreyesus, WHO

“ Without data, you’re just another person with an opinion ”

-----◆ William Edwards Deming

“ If you don’t test, you won’t find ”

-----◆ John Nkengasong, Africa CDC



DIAGNOSTIC ECOSYSTEM TO PROVIDE
ACTIONABLE INSIGHTS FOR DECISION-MAKING

CURRENT USE OF DIAGNOSTICS



- ◆ How much testing is done?
- ◆ How is testing distributed worldwide?
- ◆ Are we reaching minimal and optimal testing targets?

PERFORMANCE OF DIAGNOSTICS



- ◆ Do diagnostics perform as expected?
- ◆ Do they detect new variants?
- ◆ What is the current product pipeline?

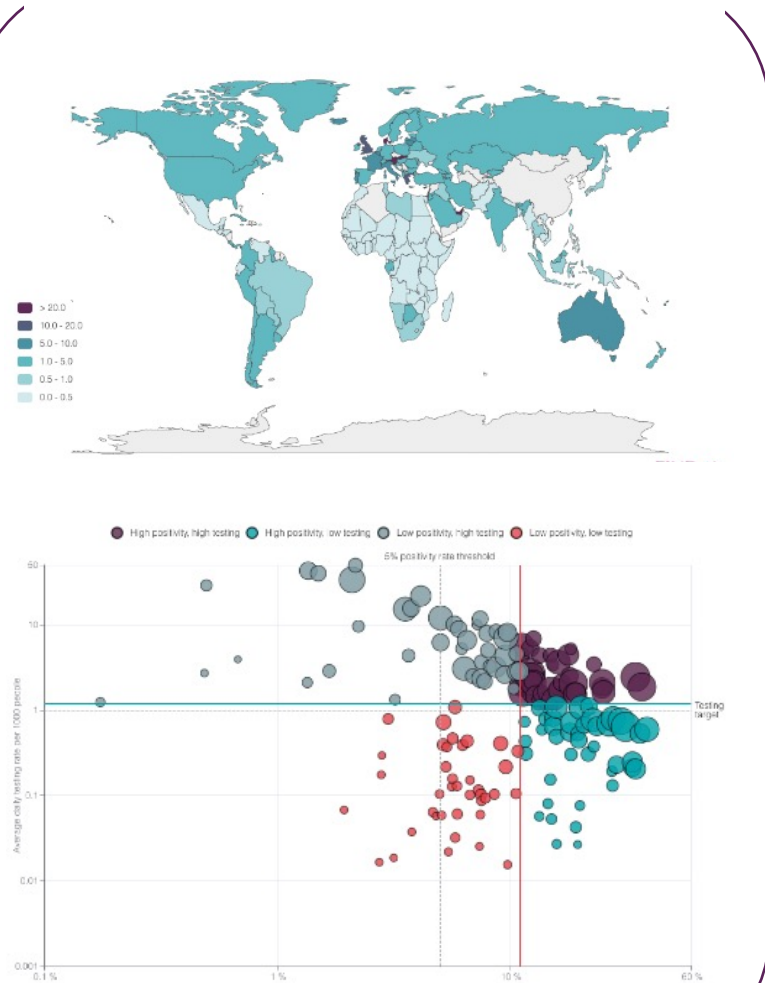
UNDERSTANDING DIAGNOSTIC GAPS



- ◆ What policies are in place in each country?
- ◆ Where should procurement and investments focus?
- ◆ Is there equity in testing?

UNDERSTANDING THE PANDEMIC THROUGH A SUITE OF DATA DASHBOARDS

Test tracker



<https://www.finddx.org/covid-19/test-tracker/>

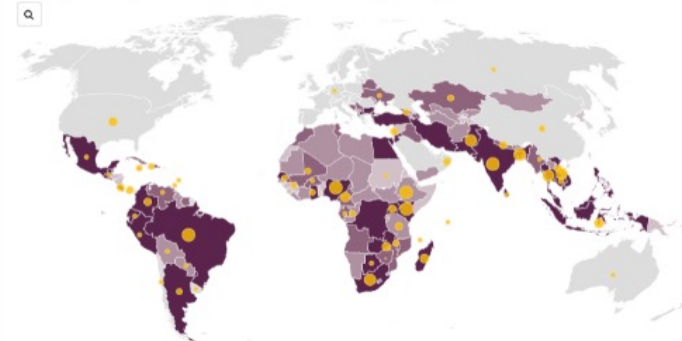
Genomic surveillance

Map of NGS capacity for SARS-CoV-2 genomic surveillance in LMICs

Assessed with a 4-tier country-level classification framework

Number of Projects¹: 1 ● 9

Archetype²: High Income³ Test Connect Leverage Strengthen



¹Click here for more information on country archetypes and classification methodology.
²Based on data shared by partner organizations. Includes data on country-level projects, regional projects are not indicated.
 Projects updated December 1, 2021

<https://www.finddx.org/covid-19/covid-19-genomic-surveillance/>

The minimal testing targets are not reached, major inequities remains worldwide.

Genomic surveillance and data reporting are still limited in many countries.

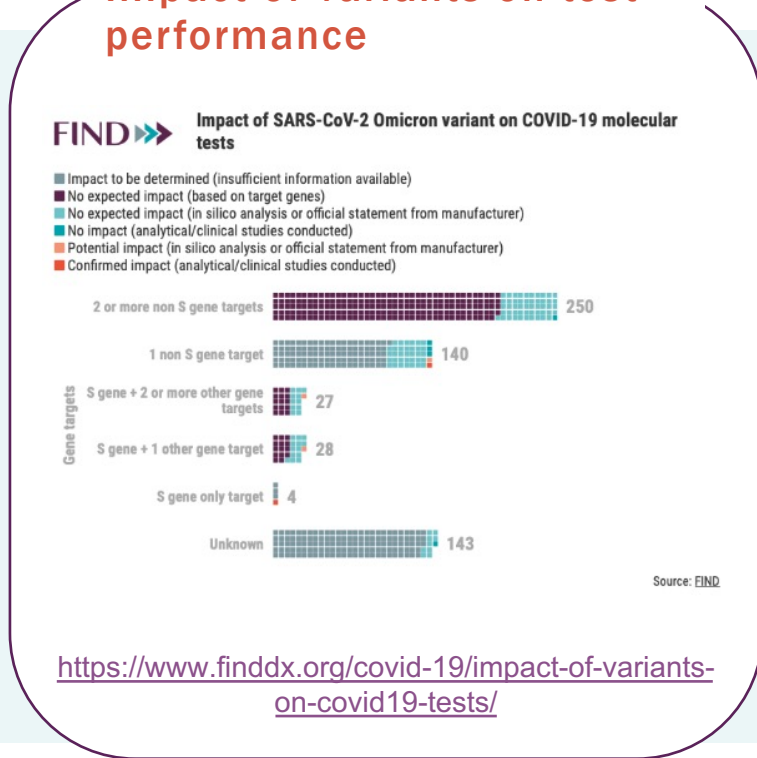
UNDERSTANDING THE PANDEMIC THROUGH A SUITE OF DATA DASHBOARDS

Test directory



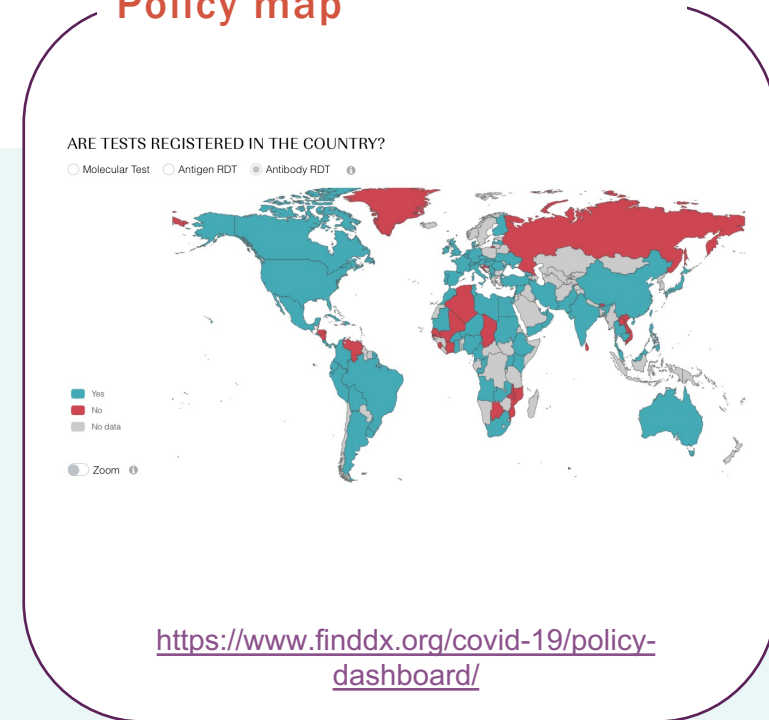
What tests are on the market?

Impact of variants on test performance



Are they detecting new variants?

Policy map



Where are tests registered?

SARS-COV-2 TEST TRACKER

A PLATFORM DEDICATED TO COVID-19 TESTING



COVID-19

WHO WE ARE

WHAT WE DO

NEWSROOM

PARTNERS & DONORS

CONTACT US



CALLS FOR PARTNERS

Low testing rates can be directly attributed to higher number of cases due to inadequate community testing, which allows infections to spread faster. One of the metrics used to monitor the spread of infection is **positivity rate**, which signifies the percentage of people testing positive for COVID-19 relative to the number of people tested. It is often suggested that positivity rates under 5% imply that the majority of cases are being identified. Positivity rate can help distinguish between increased testing and increased transmission. Positivity and testing rates together can indicate the **testing capacity of each country when there is an active wave of infection**.

Tracking the average testing rates vs average positivity rate in the last 12 months, countries can be grouped in 4 tiers (using median average testing rates and median average positivity rate as thresholds). We gain **insights on country preparedness, relative testing usage and their association with positivity rate, as well as cases and death rates**. Higher testing rates (more than 1 per 1000 people per day) correlate with lower positivity rates and lower case rates.

Country support and capacity building can be prioritized based on these insights, for example for procurement of diagnostic tests, capacity building on testing (training, equipment) and policy guidance.

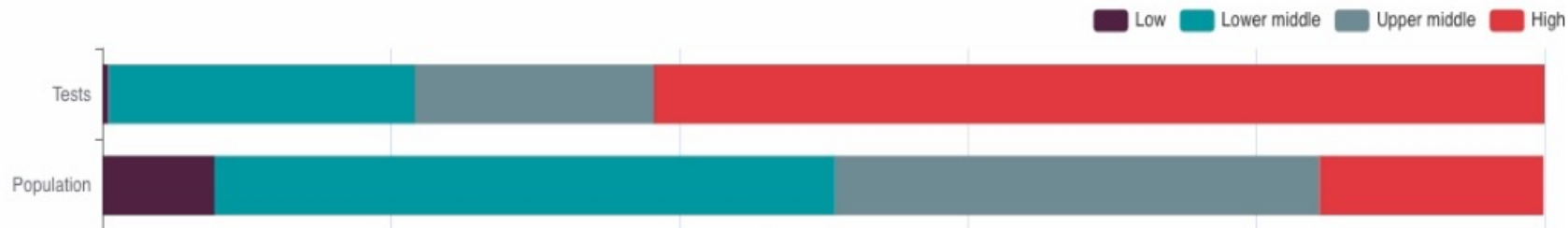


SARS-COV-2 TEST TRACKER

WE TRACK THE EQUITY GAP IN COVID-19 TESTING

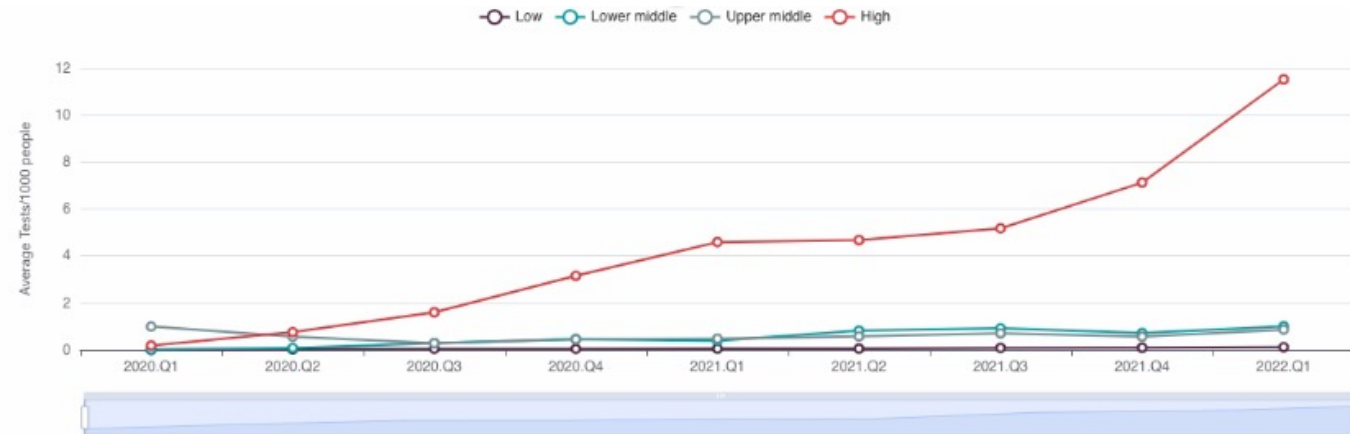
COVID-19 Tests and population

Percentage of performed tests and percentage of population across income groups worldwide



Only 22% of tests administered worldwide have been used in LMICs, which make up more than 50% of global population

Testing rates in LMICs are still almost 100 times lower than in HICs



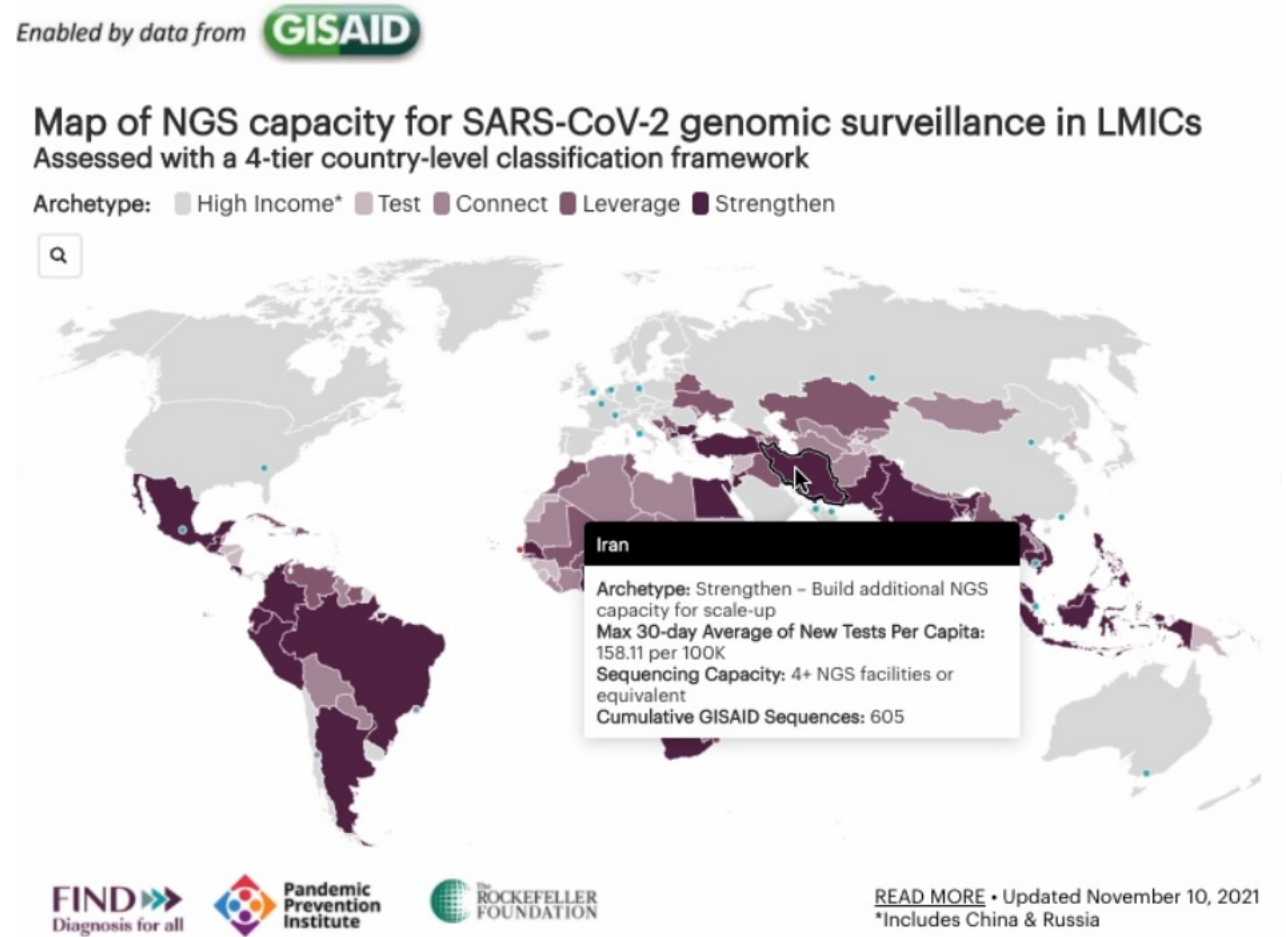
Source: finddx.org/covid-19/test-tracker

NGS CAPACITY MAPPING

WE MAP GLOBAL NEXT-GENERATION SEQUENCING CAPACITY FOR SARS-COV-2

- ◆ Map testing and NGS capacity
 - ◆ Evaluate needs
 - ◆ Propose actions

Country archetype	Description	Action needed
Test	Insufficient or unreliable diagnostic or molecular testing capacity for SARS-CoV-2	Establish sufficient diagnostic testing capacity for SARS-CoV-2
Connect	Sufficient diagnostic capacity for SARS-CoV-2, but no existing NGS capacity identified	Set-up sample referral networks to utilize regional NGS capacity or build NGS capacity from scratch
Leverage	Sufficient diagnostic capacity for SARS-CoV-2 and existing NGS capacity identified, but not deployed for SARS-CoV-2 genomic surveillance	Perform situational analysis to identify potential ways to leverage or repurpose existing NGS capacity for SARS-CoV-2 genomic surveillance
Strengthen	Sufficient diagnostic capacity for SARS-CoV-2 and existing NGS capacity being utilized for SARS-CoV-2 genomic surveillance	Expand existing genomics capacity to scale-up ongoing SARS-CoV-2 genomic surveillance



Updated information from manufacturer submissions

Results from independent evaluation studies to be added soon

TEST DIRECTORY

This fully searchable directory currently lists all commercially available immunoassays and molecular tests for COVID-19 of which FIND is aware. Manufacturer performance data (sensitivity and specificity) are included, where known, alongside data from independent evaluations conducted by FIND, where applicable. We are continuing to build this database, and will be adding other tests (which for the moment are still listed [here](#)), as well as data from independent evaluations by other entities. This project is part of our work on the [ACT-Accelerator Diagnostics Pillar](#). If you have any queries on the information included or updates to share on your test(s), please [contact us](#).

It has come to our attention that certain companies and websites are claiming to hold certificates endorsed by FIND and referring to the FIND name and logo. Third-party usage of the FIND logo to imply endorsement of services or diagnostic tools is not and has never been, authorized by FIND.

The terms of FIND's website [disclaimer](#) apply for the information contained on this webpage.

[REQUEST TO ADD A NEW TEST](#)

FILTERS

TOTAL TESTS: 1437

Manufacturer

Nothing selected

Region

Nothing selected

Country

Nothing selected

Type of technology

Nothing selected

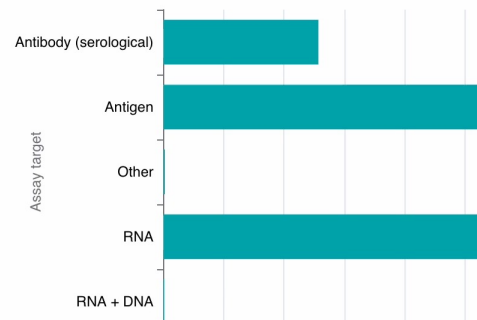
Self-testing/self-collection

Overview

Impact of Sars-Cov-2 variants

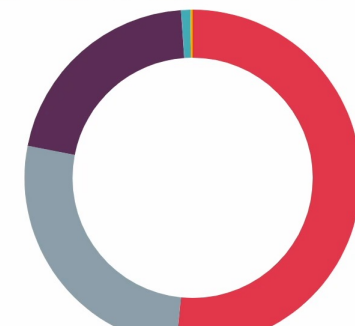
List of tests

Assay target



Manufacturer region

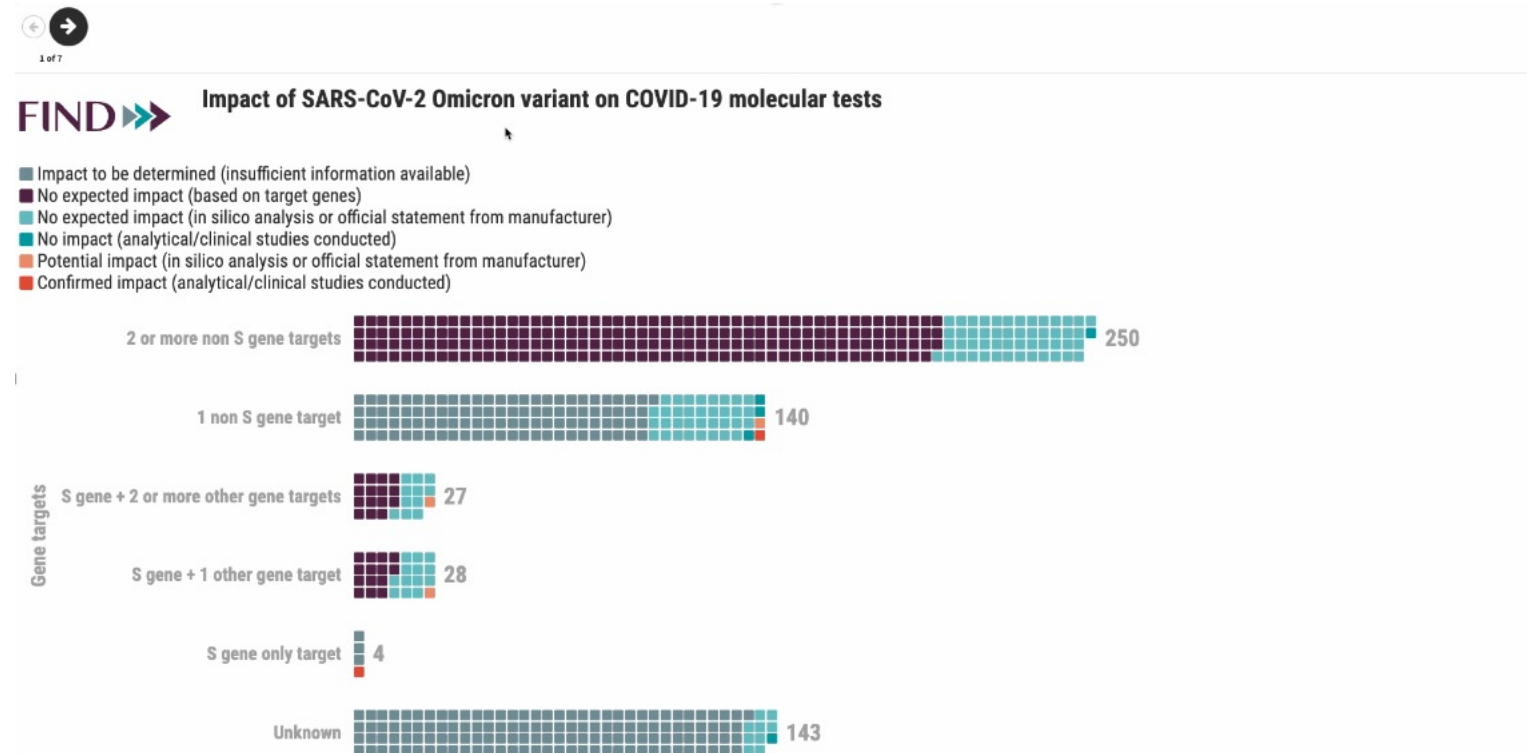
Asia Europe North America Oceania Africa



IMPACT OF VARIANTS ON COVID-19 TESTS

WE MONITOR THE IMPACT OF VOC ON DIAGNOSTICS

Actively monitoring the **impact** of SARS-CoV-2 **variants on tests**, to **accelerate** decision-making



OUR VISION FOR THE FUTURE
THE DIAGNOSTIC DATA HUB



Turn diagnostic data into actionable insights



Make it understandable and accessible to all



Be ready to tackle current and future threats

Expand to all diseases

of global health importance, building on what has been collaboratively developed for COVID-19

Leverage existing platforms

to build a system that allows us to share and access data in a collaborative way, with collective benefits

Reduce data gaps

due to data systems and reporting limitations

FIND ➡➡

Together, we can ensure
that everyone
who needs a test
can get one

