



# The Hague System for the International Registration of Industrial Designs

Seminar on the Hague System for the International Registration of Industrial Designs

Geneva,  
April 9, 2015

Yves Closet  
Head, Information and Promotion Section  
The Hague Registry

# General Overview of the Hague System



Basic features and advantages



Legal framework



Going global – geographical scope



Some statistics



Latest developments and  
upcoming features



# Basic Features and Advantages of the Hague System

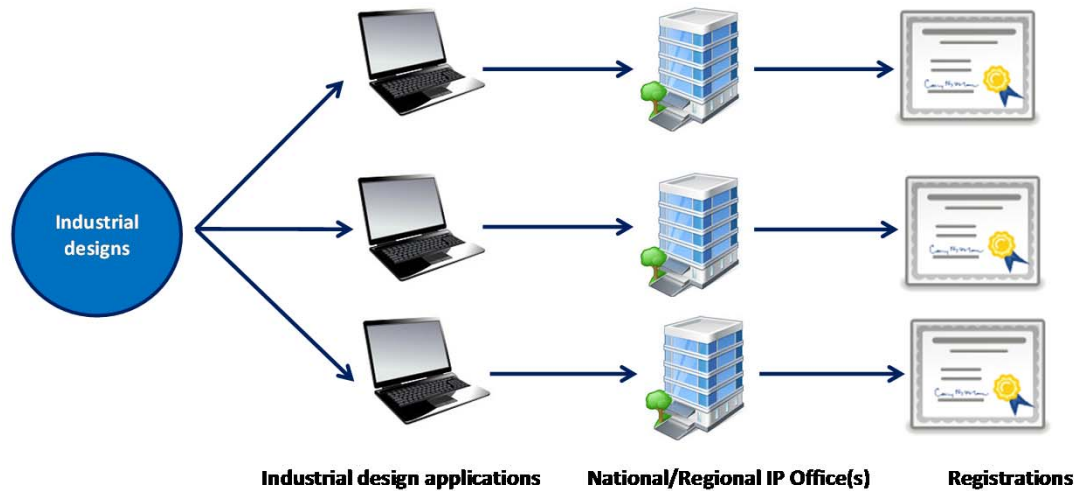
# Hague System: a simple but timeless concept

The centralized acquisition and maintenance of industrial design rights by filing a single international application for a single international registration with effect in one or more designated Contracting Parties



# Independent filings vs. Hague Route

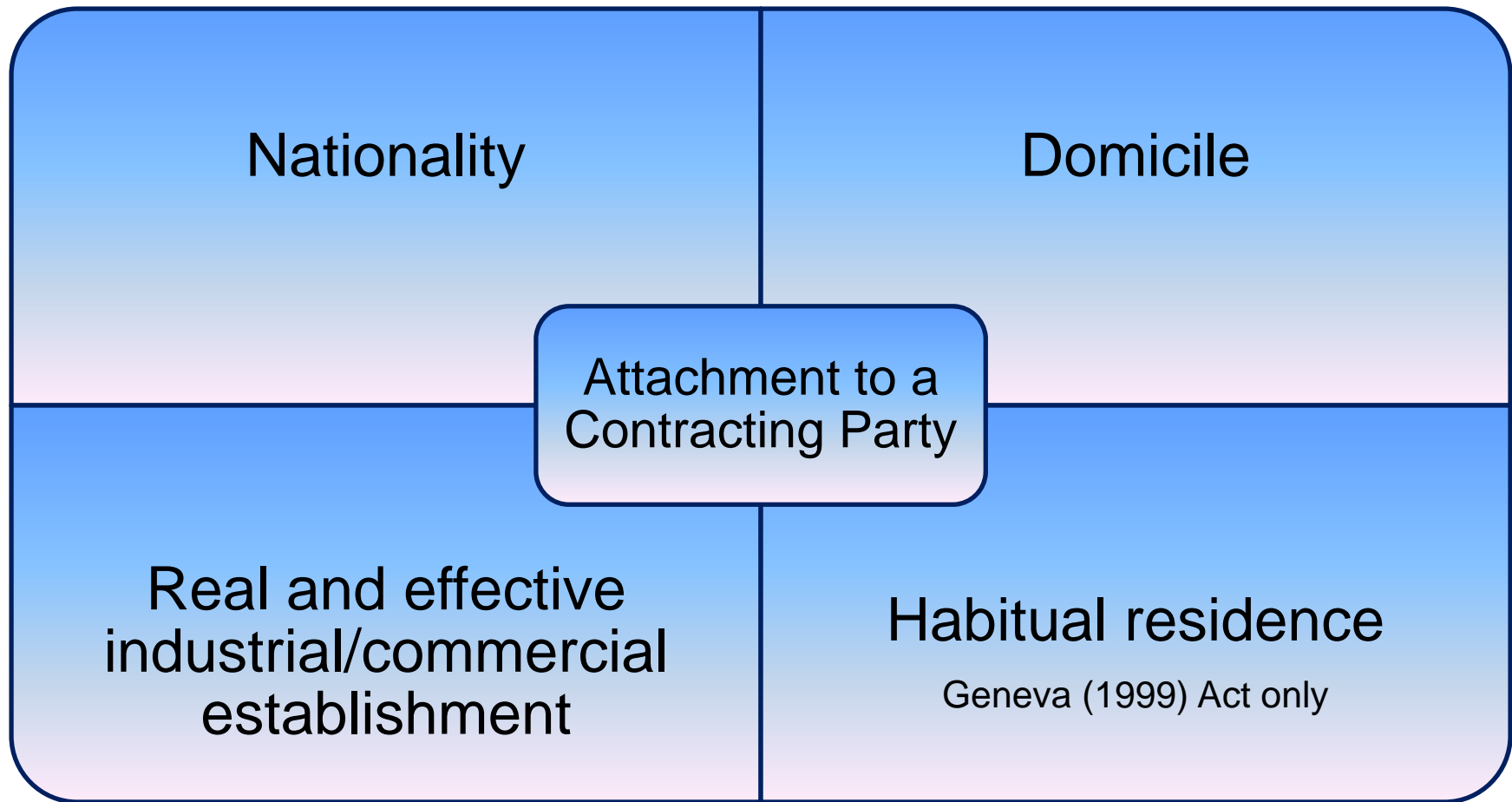
## Direct/Paris Route



## The Hague System



# Who Can Use the System?



# Main Features of the Hague System



## **Simplicity**

The Hague System enables holders to obtain protection for their designs with a minimum of formality



## **Cost-effectiveness**

Payment of a single set of fees in one currency



## **Efficiency**

Considerable facilitation of the subsequent management of the registration



## **Flexibility**

Right holders have more opportunities in targeting national, regional or global markets

# What is the Hague System?

## One to many relationships

- File a single international application for a single international registration (IR) in which one or more Contracting Parties (CP) are designated

## “Bundle of Rights”

- If no refusal, the resulting international registration has the effect of a grant of protection in each designated Contracting Party



# Hague System is a Procedural Arrangement

Issues such as:



the conditions for protection



the refusal procedure to be applied when deciding whether a design may be protected



the rights which result from protection

are governed by the law of each Contracting Party designated in an international registration

# The International Application

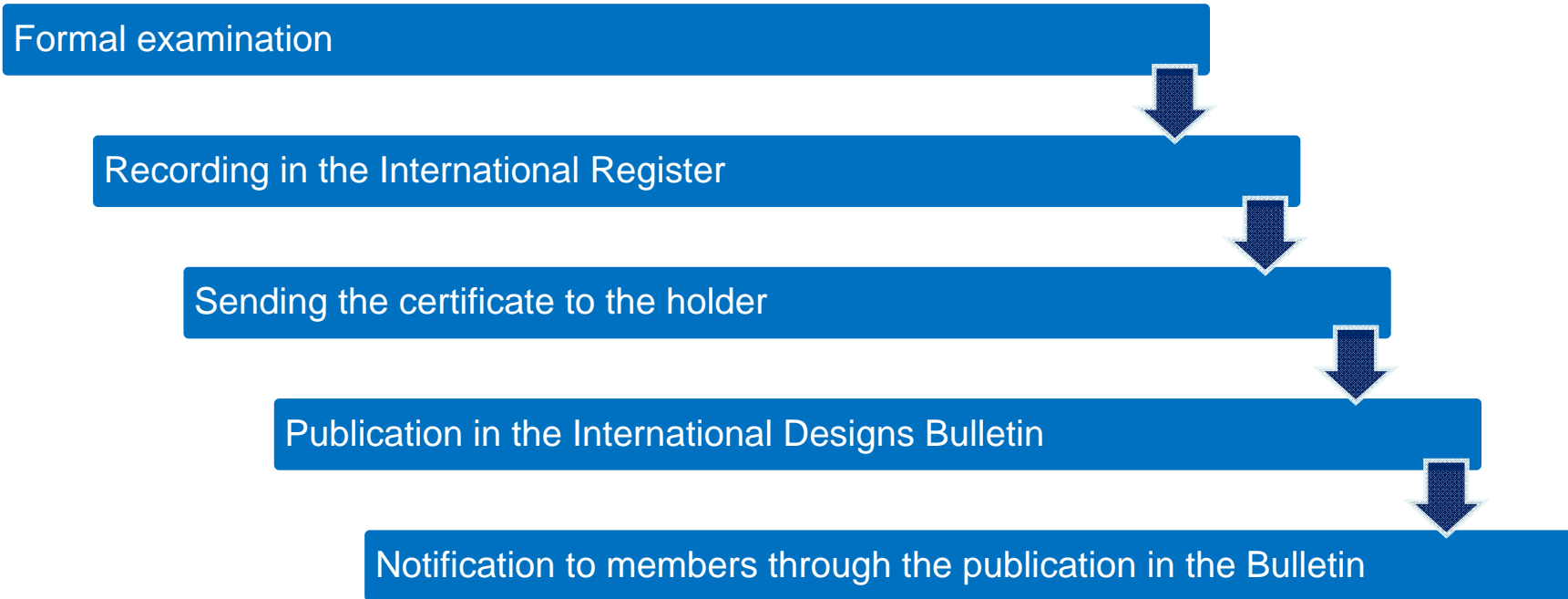
In English, French or Spanish

May be filed directly with the International Bureau through the E-filing interface but also on paper

May comprise several different designs up to a maximum of 100 if they belong to the same class of the International Classification (Locarno)

One set of fees (in CHF) is to be paid

# The Hague System Procedure: Role of the International Bureau



If the International Bureau finds that the international application does not fulfill the applicable requirements, it invites the applicant to make the required corrections within three months from the date of invitation sent by the International Bureau

International registration has the same effect as a regularly-filed application in all designated Contracting Parties

# The Hague System Procedure (II)

## Refusal by a designated Contracting Party

on same substantive grounds as for national/regional filings

must be communicated within time limit

effect limited to territory of the member that has refused

## International registration (where not refused)

no refusal = same rights as a local design registration

a bundle of independent national/regional rights

advantages of central management

# The Hague System Procedure (III)



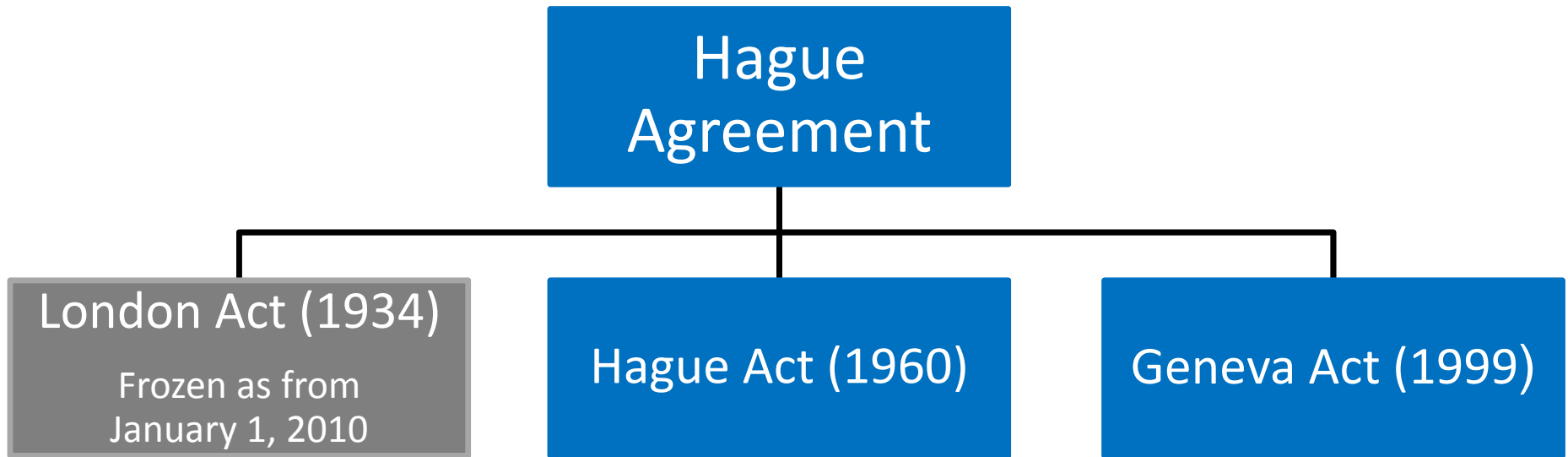
Duration of protection: five years

Renewable at least once (1960 Act) or twice (1999 Act)

Longer renewal period, if allowed by the law of the designated Contracting Party



# Legal Framework



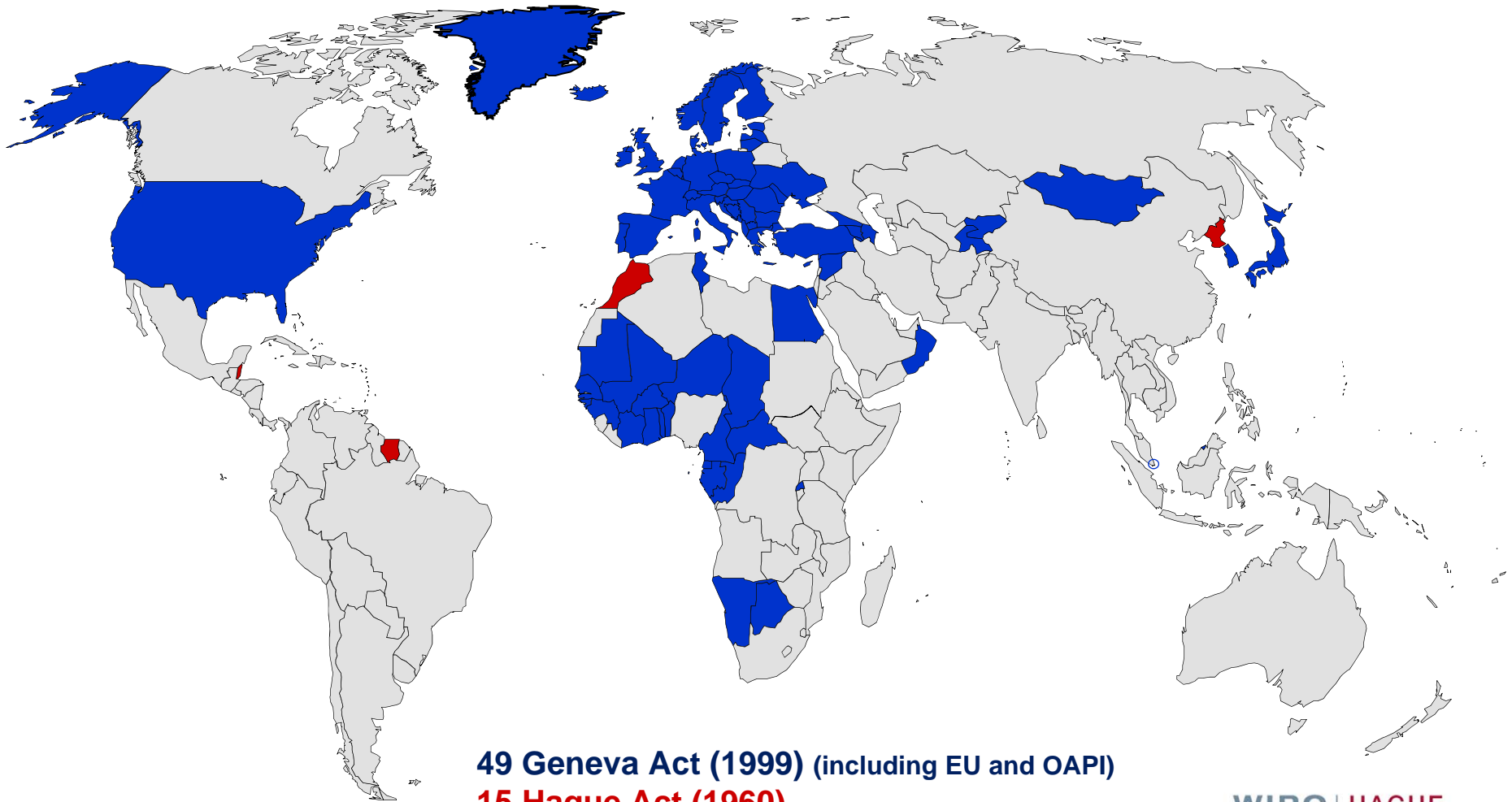
- **Common Regulations (1996), last revised: January 1, 2015**
- **Administrative Instructions (2002), last revised: July 1, 2014**
- **National Laws and Regulations**



# Going Global – Geographical Scope of the Hague System



# Hague Union



**49 Geneva Act (1999) (including EU and OAPI)**

**15 Hague Act (1960)**

---

**64 Contracting Parties**

**WIPO | HAGUE**  
The International  
Design System

# Hague Union Members according to the most recent applicable Act

## Geneva Act (1999)

- African Intellectual Property Organization, Albania, Armenia, Azerbaijan, Bosnia and Herzegovina, Botswana, Brunei Darussalam, Bulgaria, Croatia, Denmark, Egypt, Estonia, European Union, Finland, France, Georgia, Germany, Ghana, Hungary, Iceland, Japan, Kyrgyzstan, Latvia, Liechtenstein, Lithuania, Monaco, Mongolia, Montenegro, Namibia, Norway, Oman, Poland, Republic of Korea, Republic of Moldova, Romania, Rwanda, Sao Tome and Principe, Serbia, Singapore, Slovenia, Spain, Syrian Arab Republic, Switzerland, Tajikistan, the former Y.R. of Macedonia, Tunisia, Turkey, Ukraine and the United States of America

## Hague Act (1960)

- Belgium, Belize, Benin, Côte d'Ivoire, D.P.R. of Korea, Gabon, Greece, Italy, Luxembourg, Mali, Morocco, Netherlands, Niger, Senegal and Suriname

# Geneva Act (1999)

## Recent Accessions



United States of America  
(as of May 13, 2015)



Japan  
(as of May 13, 2015)



Republic of Korea  
(July 2014)



Brunei Darussalam  
(December 2013)

## Potential accessions



China



Russian Federation



Morocco



ASEAN countries



Israel



Belize



Mexico



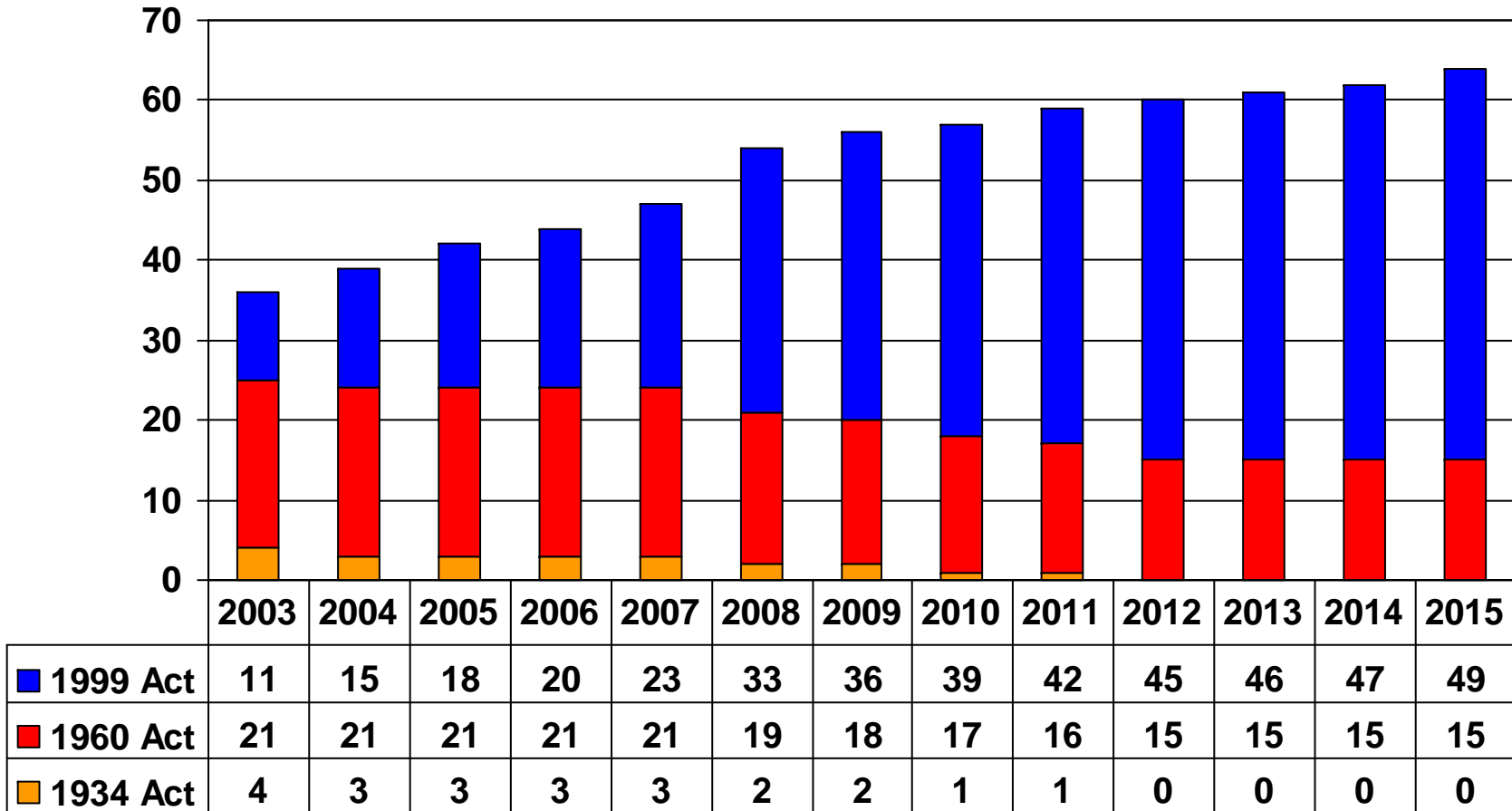
Madagascar



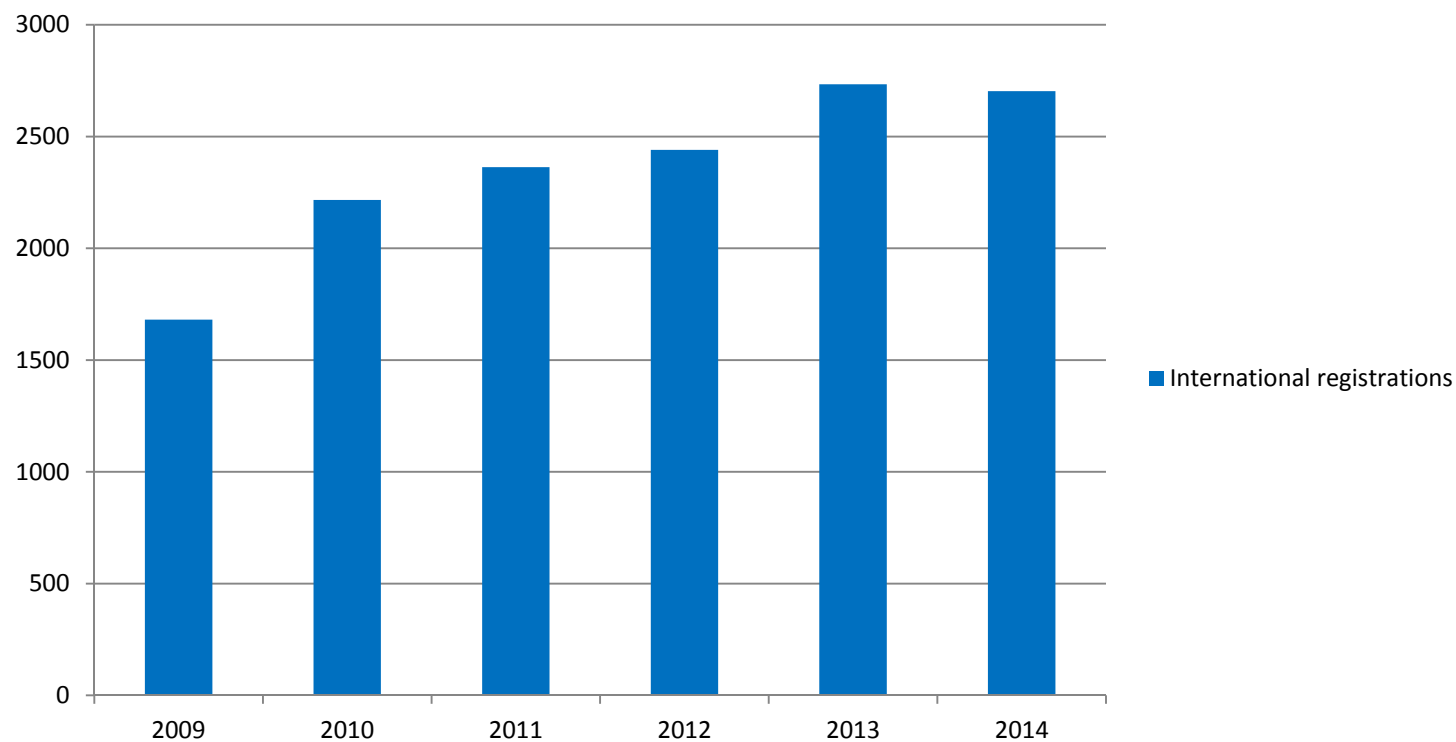
## Some Statistics

# Hague Membership

Status as of February 2015 (by most recent Act)

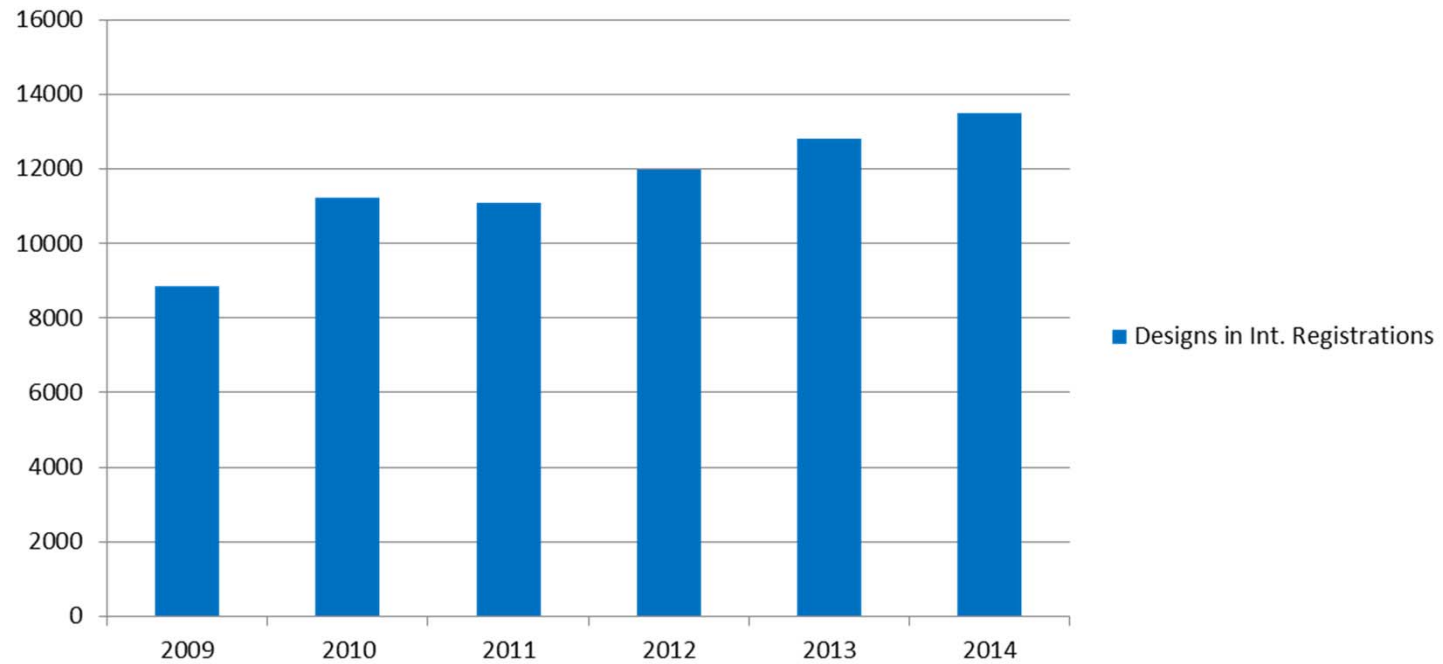


# International Registrations Recorded 2009-2014



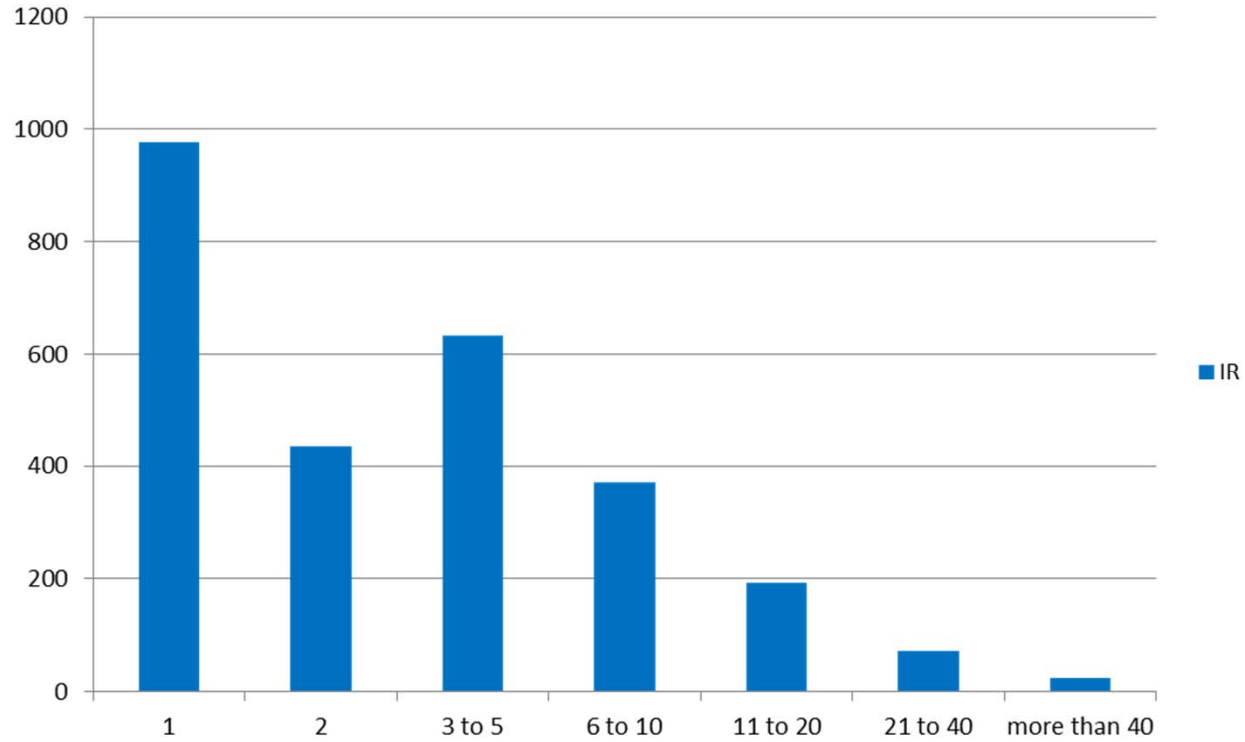
Int. Registrations Recorded	1681	2216	2363	2440	2734	2703
Growth	10.3%	31.8%	6.6%	3.3%	12.0%	-1.1%

# Designs in International Registrations 2009-2014



Designs in Int. Registrations	8867	11238	11077	11971	12806	13504
Growth	11.7%	26.7%	-1.4%	8.1%	7.0%	5.5%

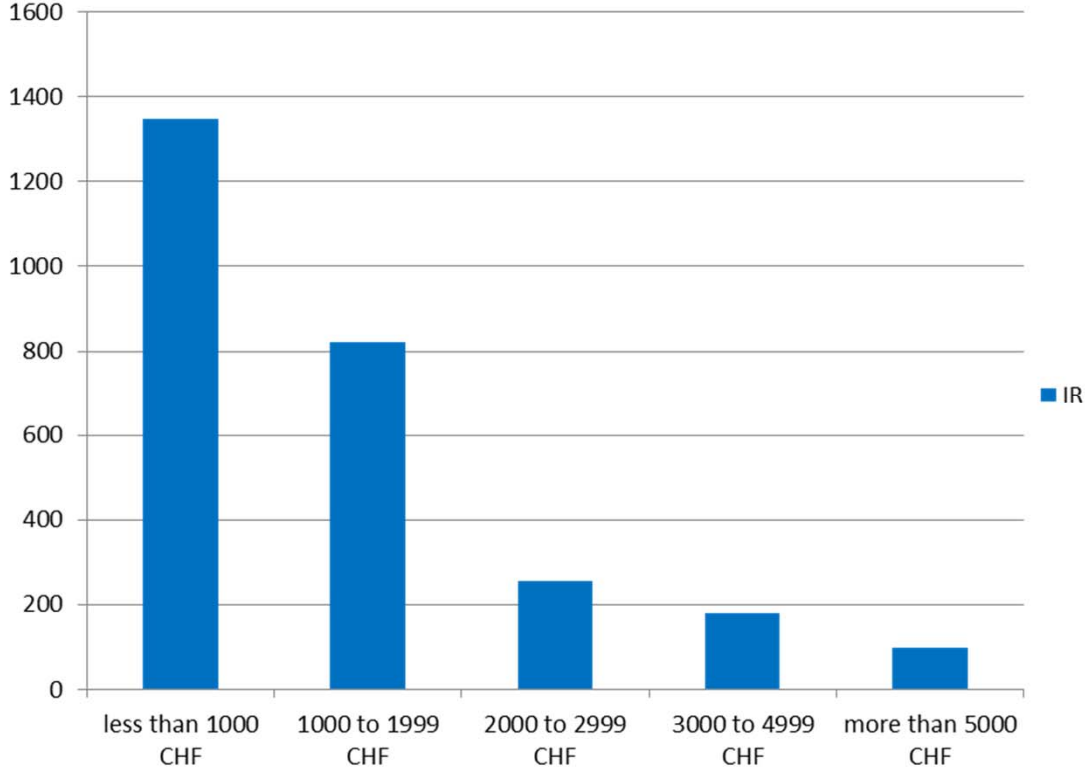
# Designs per International Registration (2014)



International Registrations	978	434	632	370	192	72	25
%	37%	16.5%	24%	14%	7%	1%	0.5%

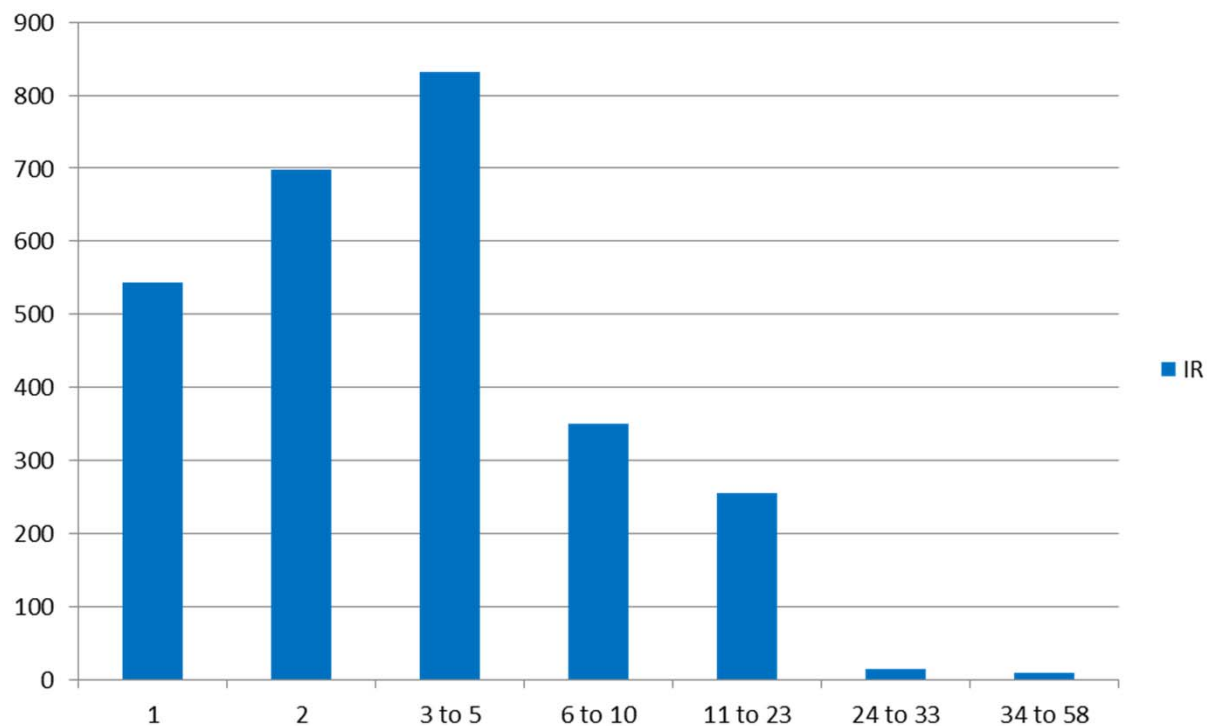


# Amount of Fees Paid per International Registration (2014)



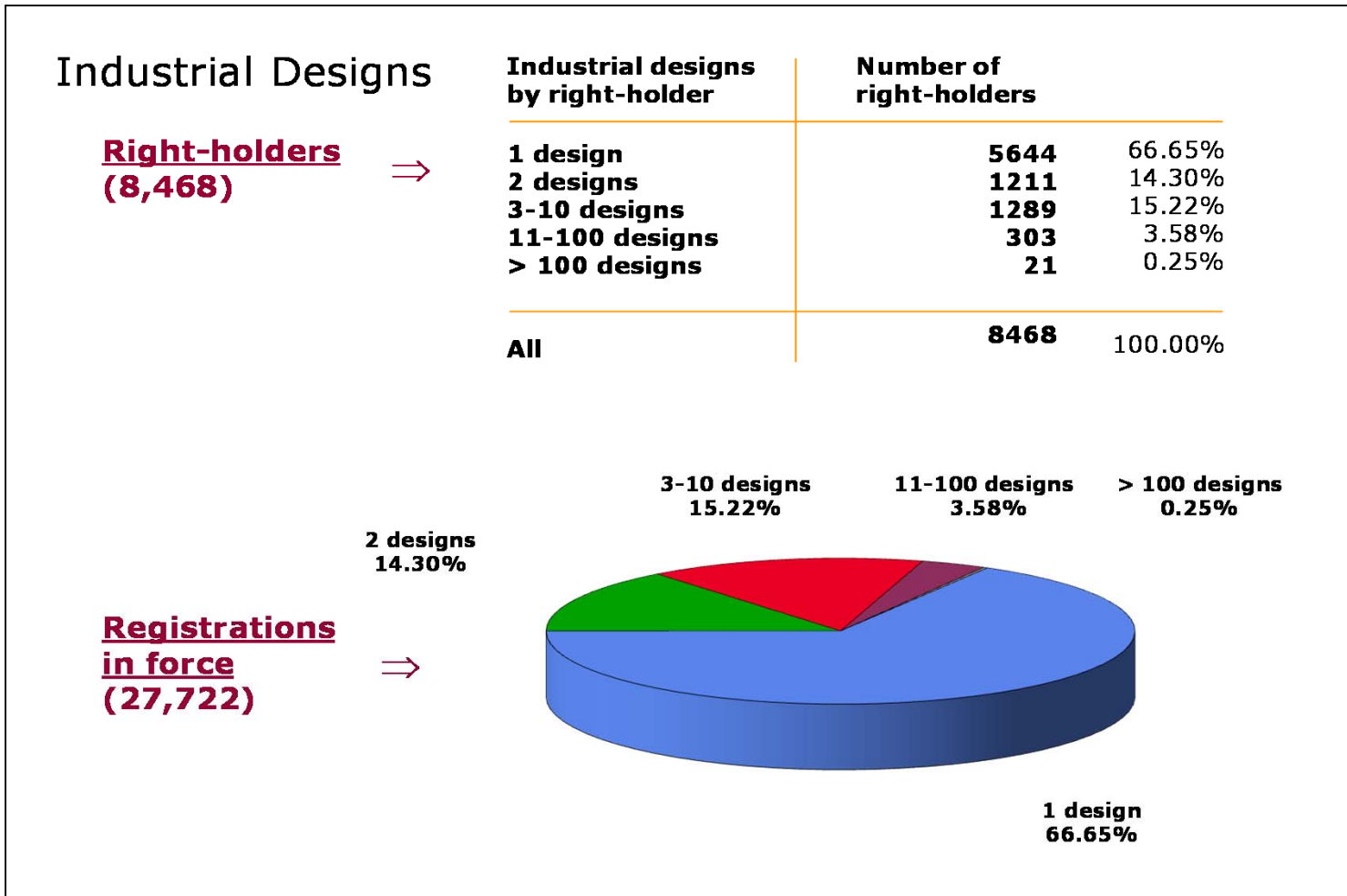
IR	1349	820	256	180	98
%	49.9%	30.3%	9.5%	6.7%	3.6%

# Designations in International Registrations (2014)

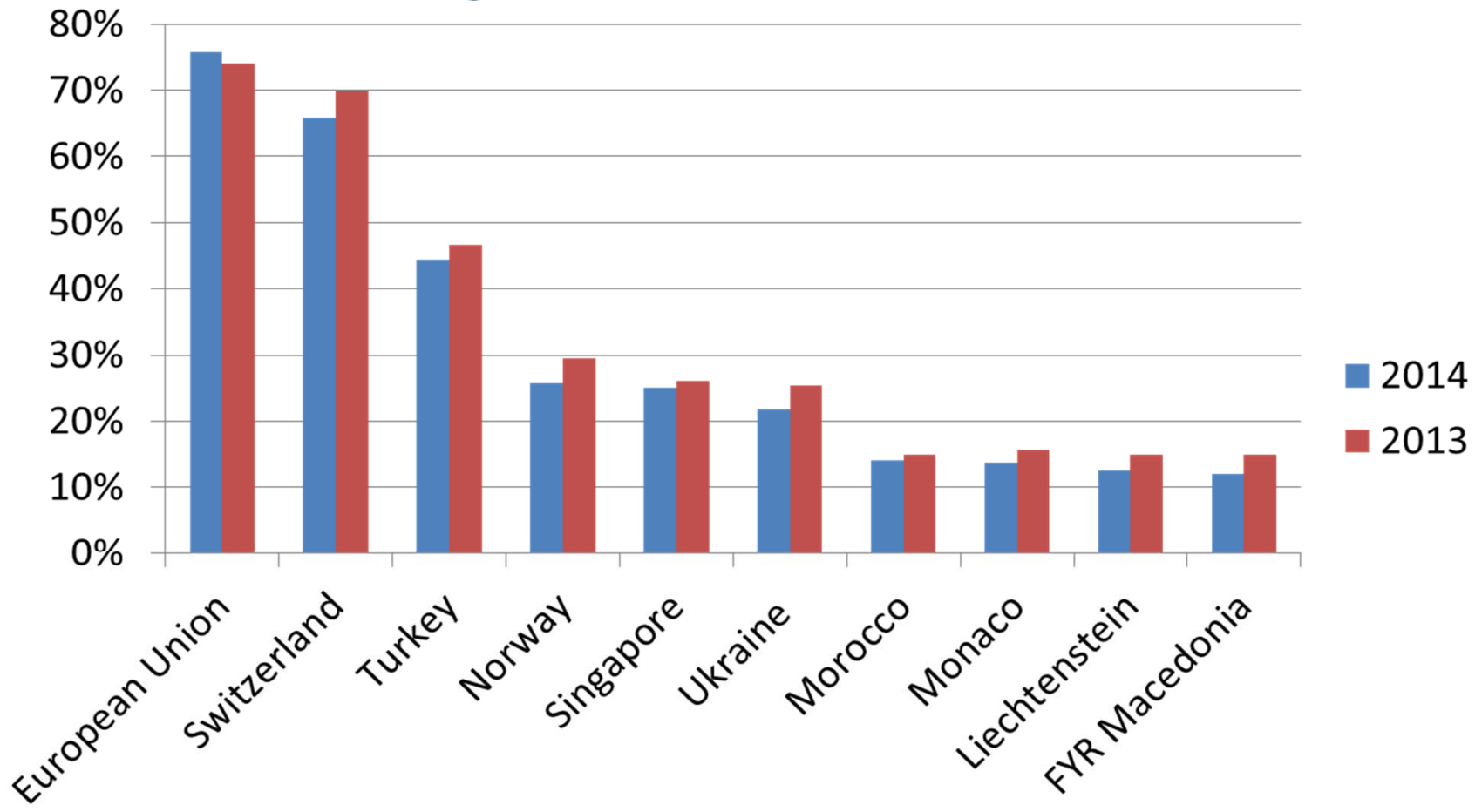


IR	543	699	831	351	256	14	9
%	20.1%	25.9%	30.7%	13%	9.5%	0.5%	0.3%

# International Registrations in Force in the International Register (on December 31, 2014)



# Most designated Contracting Parties in 2014 (international registrations)



## 2014: International Applications



2,924 international applications were received containing 14,441 designs (max. 100 designs / application)



2.2% decrease compared to 2013 in the number of applications



9.6% growth compared to 2013 in the number of designs

## 2014: International Registrations



2,703 international registrations were inscribed containing 13,504 designs



1.1% decrease compared to 2013 in the number of registrations



5.5% growth compared to 2013 in the number of designs

# 2014: Five Most Popular classes in International Registrations



**Class 10**  
**Clocks and watches and other measuring instruments, checking and signaling instruments**  
**275 registrations (10.2%)**



**Class 9**  
**Packages and containers for the transport or handling of goods**  
**240 registrations (8.9%)**



**Class 12**  
**Means of transport or hoisting**  
**238 registrations (8.8%)**

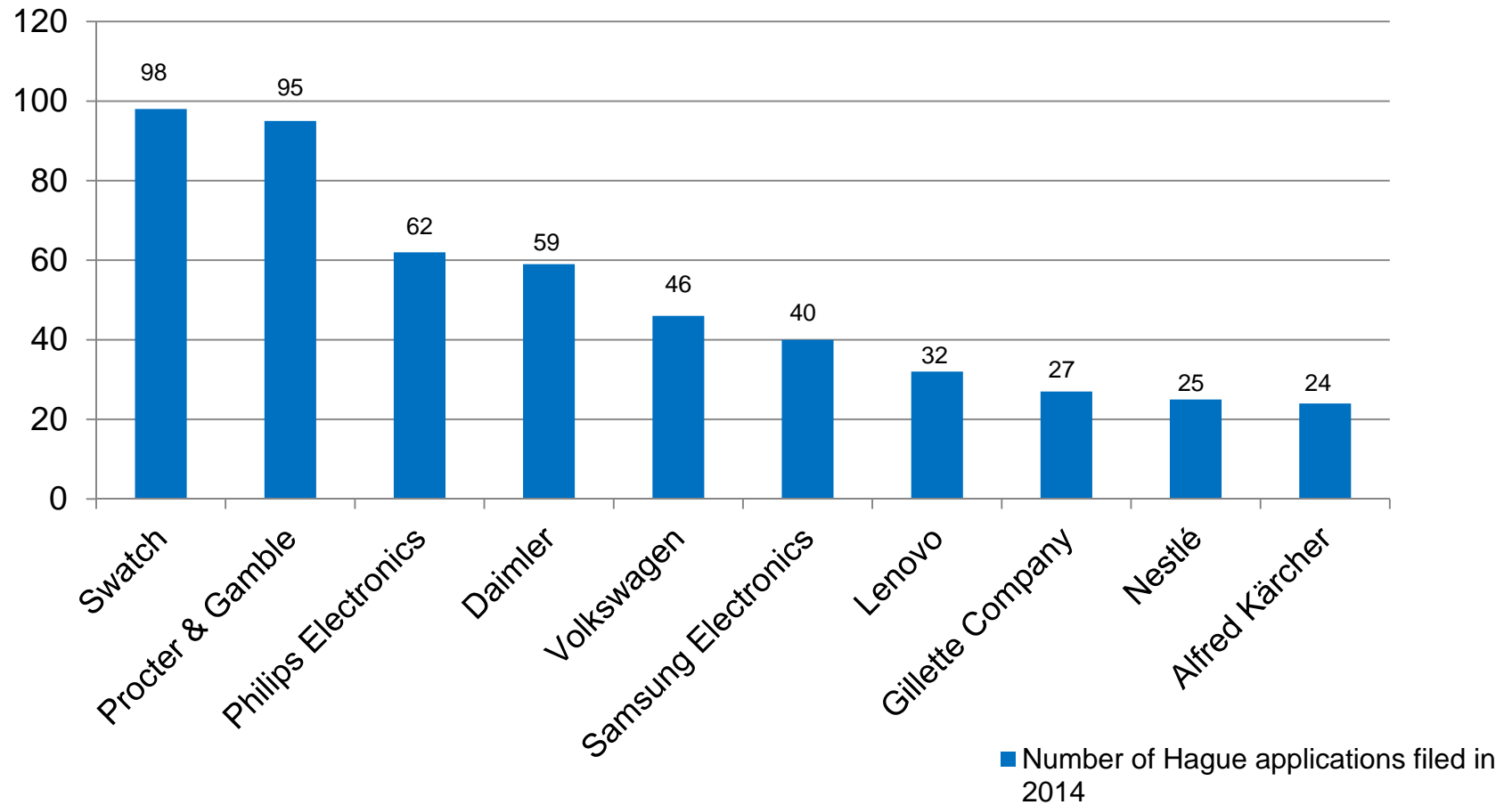


**Class 6**  
**Furnishing**  
**232 registrations (8.6%)**



**Class 14**  
**Recording, communication or information retrieval equipment**  
**160 registrations (5.9%)**

# TOP 10 Hague Applicants (2014)







# Latest Developments and Upcoming Features

# Latest Developments



New Hague Express Database since January 2015



Global Design Database launched in January 2015



Improvement of E-filing interface



Developments in the legal framework

# Hague Express Database

## Hague Express

The Hague Express Database, updated weekly, includes bibliographical data and, as far as international registrations governed exclusively or partly by the 1999 and/or by the 1960 Act(s) of the Hague Agreement are concerned, reproductions of industrial designs relating to international registrations that have been recorded in the International Register and published in the International Designs Bulletin as of issue No. 1/1999. International registrations that have lapsed are not removed from the database.

**SEARCH BY**

Design Names Numbers Dates Country

Indication of Products = watch

Locarno =

Description =

search

CURRENT SEARCH

PROD:watch

**FILTER BY**









Designation Locarno Class Reg. Date \* Contracting Party \*

CH	1,535	MC	1,131	TN	991	MA	963	LI	960
FR	894	DE	890	IT	889	EG	887	BX	851
BE	851	NL	851	LU	851	ES	813	ME	684
MK	683	GR	666	MD	642	MN	634	SG	611
TR	594	UA	591	ID	586	EM	583	KP	556
RS	523	VA	489	SI	462	CW	409	BQ	408
SX	406	GE	380	RO	378	KG	376	BZ	364

Display: List Sort: Count - desc

filter

1 - 10 / 1,627 edit columns <> 10 per page 1 / 163

Reg. No	Holder	Reg. Date	Locarno Cl	Ind. Prod.	Des.	Designs	Image
DM/046674	HYSEK JÖRG	1999-02-03	03-01	Etui pour montre	AN,EG,ES,ID,MA,TN,V	1	
DM/082429	CARTIER CREATION STUDIO SA	2013-12-13	10-02	1. Watch; 2. Watch case; 3. Watch dial; 4. Watch; 5. Watch bracelet; 6. Watch dial; 7. Watch dial	CH,EM,SG,TR	8	
DM/083367	FRANCK MULLER WATCHLAND SA	2014-04-09	10-02	1. Montre-bracelet	EM,MC,SG	1	
DM/065362	SWATCH AG (SWATCH SA) (SWATCH LTD.)	2004-05-12	10-02	1. Montre-bracelet	BQ,CW,EG,ID,SX,TN,I	1	
DM/073485	BÉDAT & CO SA	2010-03-26	10-02	Watch	BX,KP,CH,EM,LI,OA,S	1	
DM/073351	HUBLOT SA, GENÈVE	2010-03-18	10-02	Watch	CH,EM,SG	1	
DM/073317	OMEGA SA (OMEGA AG) (OMEGA LTD.)	2010-02-12	10-02	Watch	BZ,MA,MC,ME,AL,AM,I	1	
DM/072570	ALEXIS BARTHELAY (SOCIÉTÉ ANONYME)	2009-10-20	10-02	Watch	MA,CH,EG,EM,OM,SG	1	

# Global Design Database

## Global Design Database

A world-wide collection of industrial designs data; including WIPO Hague registrations and information from participating national offices.

### SEARCH BY

Design | Names | Numbers | Dates | Country

Indication of Products =

Design class =

Description =

**search** 🔍

**CURRENT SEARCH**

PROD:(perfume) ✕

### FILTER BY




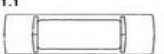

Source | Designation | Locarno Class | Reg. Date \* | Contracting Party \*

CH	106	CA	94	MC	67	DE	65	BX	57
BE	57	NL	57	LU	57	FR	53	IT	47
LI	46	EG	44	MA	43	ES	41	TN	39
GR	38	TR	36	RS	36	RO	35	UA	35
ME	32	EM	32	BG	31	SG	31	HU	31
SI	29	MK	27	KP	24	MD	22	ID	20
VA	18	AN	14	BQ	11	SX	11	SN	11

Display: List | Sort: Count - desc

**filter** 🔽

1 - 10 / 225 10 per page 1 / 23

Reg. No	Source	Holder	Reg. Date	Class	Ind. Prod.	Des.	Designs	Image
DM/084555	Hague	BULGARI SPA	2014-10-02	LC.09-01	1. <i>Perfume</i> bottle	MA,CH,EM,LI,MC,SG	1	
DM/084494	Hague	BULGARI SPA	2014-09-26	LC.09-01	1. <i>Perfume</i> bottle	MA,CH,EM,LI,MC,SG	1	
DM/083330	Hague	BULGARI SPA	2014-04-04	LC.09-01	1. <i>Perfume</i> bottle	MA,CH,EM,LI,MC,SG	1	
DM/083058	Hague	COMPTOIR NOUVEAU DE LA PARFUMERIE	2014-02-20	LC.09-01	1. <i>Perfume</i> bottle	MA,CH,EM,MC,SG,T	1	
DM/082126	Hague	PACIFIC CREATION	2013-10-09	LC.09-03	1. <i>Perfume</i> packaging	CH,EG	1	
DM/081534	Hague	BOURJOIS SARL	2013-07-11	LC.09-01	1. Fragrance bottle	CH,TR	1	
DM/080039	Hague	FENDI ADELE S.R.L.	2013-01-30	LC.09-01	1. <i>Perfume</i> bottle	CH,EM,OM,SG,TR	1	

# E-Filing Platform

The E-filing platform includes the following features:

a WIPO User account

facilitated downloading of reproductions

real time checking of certain formalities

saving of applications in progress

fully integrated fee calculator

payment of fees by credit card

and much more...

# Coming Soon

## Hague Portfolio Manager (HPM)

The HPM will enable access to data uploaded to the user account, such as the bibliographic data of the holder and a portfolio of international applications and registrations

The HPM will allow as well for interaction between the holder and the International Bureau

The HPM will also make it possible to manage portfolios by allowing for the submission to the International Bureau of requests for the recording of modifications through an electronic interface related to a user account

# Coming Soon

## Hague Office Portal (HOP)

It is foreseen the communications between the International Bureau and the Office of a Contracting Party will mainly take place electronically through the Hague Office Portal (HOP)

HOP is intended to serve as a main communication tool between the International Bureau and an Office throughout the life of an international registration, both before and after its publication in the International Designs Bulletin

**Thank You!**

[www.wipo.int/hague/en](http://www.wipo.int/hague/en)