

Sharing national experiences on use of WIPO CASE system

Rongguo Xie

Patent Search & Examination Unit,
Intellectual Property Office of Singapore

Contents

- **Work-sharing on dossier information – a trend to embrace**
- **Experience on using WIPO-CASE and suggestions on improvement of WIPO-CASE**

Dossier Info

- **Dossier info**

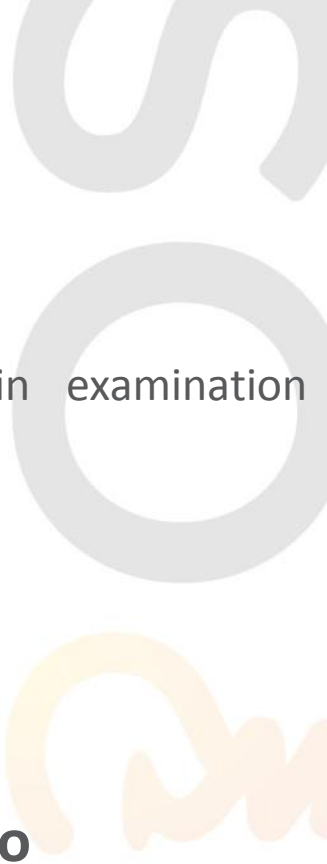
(also known as patent file wrapper, a complete record of proceedings from filing the initial patent application to the issued patent in a patent office)

- OA (“office action”) including SR (“search reports”) and WO (“written opinion”)
- Correspondence between applicant (or attorney) and examiner including applicant’s argument and records of interviews
- Search strategy
- Priority documents
- Cited patent documents
- Oath and declaration, etc.

Public availability of patent dossier information

Dossier Info	US	WO	AU	EP	CN*	JP	KR	GB	CA
OA (SR+WO)	○	○	○	○	○	△	△	○	×
Correspondence	○	○	○	○	○	△	△	○	×
Search strategy	○	●	○	×	×	×	×	×	×
Priority documents	×	○	×	○	×	×	×	×	×
Cited patent documents	●	×	×	×	×	×	×	×	×

- Certain Dossier information is available at some patent offices



Importance of sharing dossier info among patent offices

1. For patent examiner:

- ❑ Improve efficiency and quality of S&E work
 - Better starting point for S&E
 - Better understanding the similarity and difference in examination practices among patent offices
 - Learning Portal for new examiners

2. For Applicant:

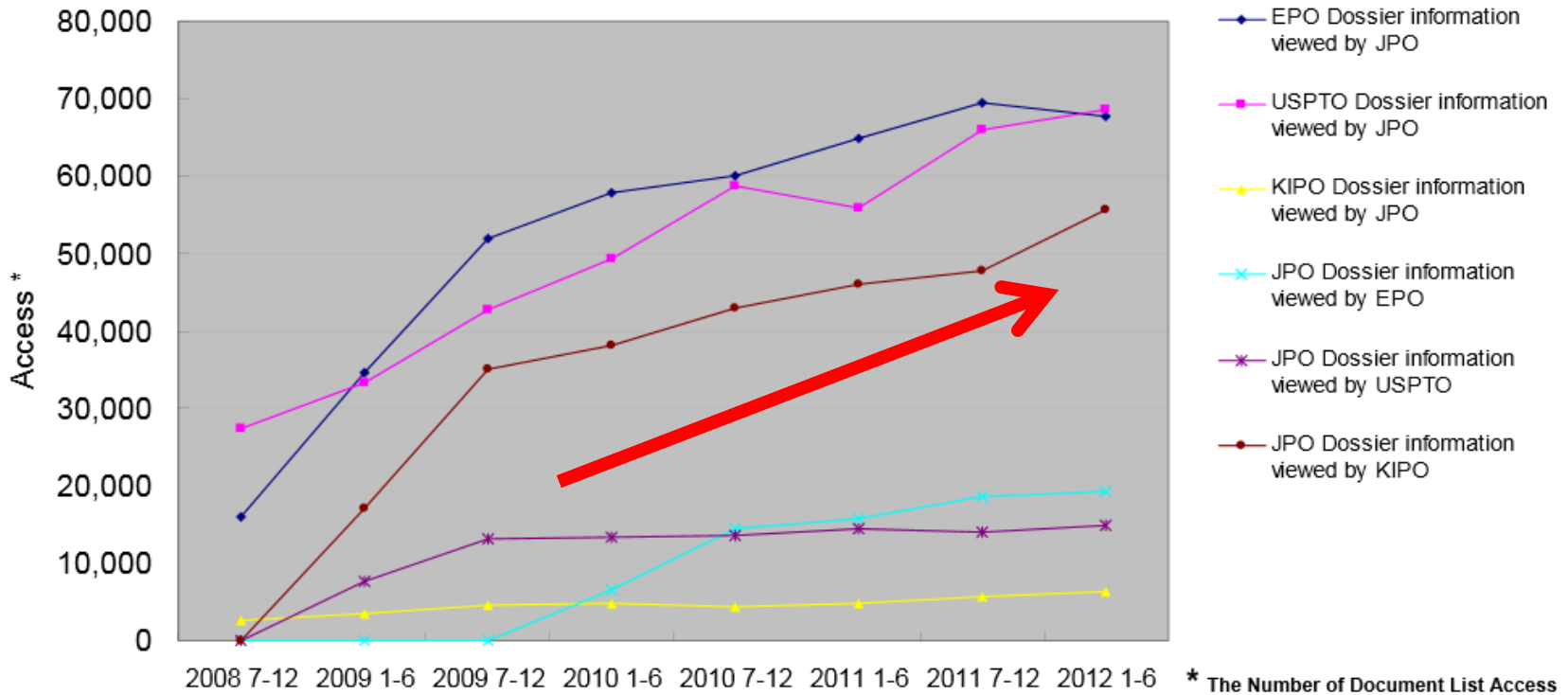
- ❑ Better usage of PPH/ASPEC
- ❑ Better communication with Applicants during responses
- ❑ Time/cost saving

Need for a centralized work-sharing platform for dossier info

- ❑ separately look for dossier info at each individual patent office: very tedious
- ❑ A centralized work-sharing platform provides patent offices with a one-stop gateway to dossier info of family members filed at different offices in a single website: straightforward and efficient



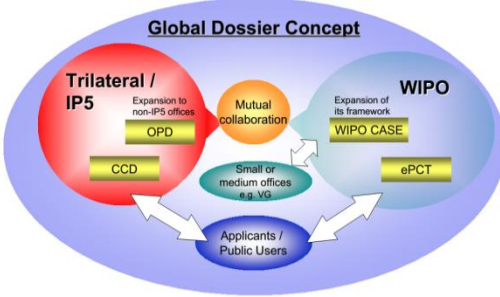

Increasing use of foreign dossier info by examiners

Dossier Information Mutual Access



Source: Japan Patent Office, via WIPO http://www.wipo.int/edocs/mdocs/copyright/en/wipo_asean_ip_tyo_12/wipo_asean_ip_tyo_12_ref_t4a.pdf

Currently available online work-sharing platforms

IP5 OPD	WIPO CASE	Global Dossier	SIPO CPES
	 <p>and many more...</p>		
<p>Not accessible for IPOS, only for IP5</p>	<p>Accessing office starting from Jan 2014</p>	<p>NO*</p>	<p>Under Trial Use</p>

Experience on use of WIPO-CASE: User interface

Patent Family

Search Type

Simple Extended

Application No. ▾

SG2012013868

Search

Reset

Application Number:

Add Application

Display Tree

Sort: Application No. - ASC ▾

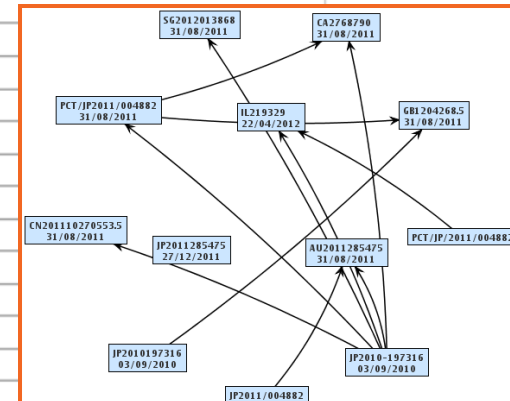
Family Members

Citations

NUMBER	FILING DATE	PCT NUMBER
AU2011285475 JP2010-197316	(31 Aug 2011) (03 Sep 2010)	JP2011/004882
CA2768790 JP2010-197316	(31 Aug 2011) (03 Sep 2010)	PCT/JP2011/004882
CN201110270553.5 JP2010-197316		
GB1204268.5 JP2010197316		
IL219329 JP2010-197316		
JP2011285475 SG2012013868 JP2010-197316		
PCT/JP2011/004882 JP2010-197316		

(AU2011285475)

DATE	DOCUMENT	VIEW	DOWNLOAD
12 Dec 2013	CORRO OUT		
11 Dec 2013	CLAIM		
11 Dec 2013	DESCRIPTION		
27 Nov 2013	AMENDMENT		
29 Nov 2012	EXAM CORRO		
30 May 2012	AMENDMENT		
16 Feb 2012	ABSTRACT		
16 Feb 2012	ABSTRACT		
16 Feb 2012	CLAIM		
16 Feb 2012	DESCRIPTION		
16 Feb 2012	DRAWING		
16 Feb 2012	DRAWING		



Experience on use of WIPO-CASE: sampling test on data coverage

Patent Families having SG, GB, AU, CA members are selected for testing

Sampling family	Family members	Dossier information published at national office	Information available at WIPO Case			
			As of 14 April, 2014		As of 14 July, 2014	
			Family member	Dossier information	Family member	Dossier information
Family 1	SG201302601				X	
	GB201306054	√			√	√
	AU2013202579	√	√	√	√	√
	CA2811503				√	
Family 2	SG201201386				√	
	GB201204268	√			√	√
	AU2011285475	√	√	√	√	√
	CA2768790				√	
Family 3	SG201304308				√	
	GB0810203	√	√	√	√	√
	AU2009254935	√	√	√	√	√
	CA2726257				X	
Family 4	SG201101608				√	
	GB0526416	“Terminated before grant”	√	“No Records”	√	“No Records”
	AU2006327942	√	√	√	√	√
	CA2631394				√	

Experience on use of WIPO-CASE: comparison after updating

As of 14 April, 2014

Search Type Simple Extended

Publication No.

Application Number:

Family Members	
NUMBER	
AU2006327936	GB0526416.3
AU2006327942	GB0526416.3
CA2631394	GB0526416.3
CA2632154	GB0526416.3
IL191747	GB0526416.3
IL191754	GB0526416.3
JP2006327942	GB0526416.3
JP2008546635	GB0526416.3

As of 14 July, 2014

Search Type Simple Extended

Application No.

Application Number:

Family Members	
NUMBER	FILING DATE
AU2006327936	(22 Dec 2006)
GB0526416.3	(23 Dec 2005)
AU2006327942	(22 Dec 2006)
GB0526416.3	(23 Dec 2005)
CA2631394	(22 Dec 2006)
GB0526416.3	(23 Dec 2005)
CA2632154	(22 Dec 2006)
GB0526416.3	(23 Dec 2005)
CN200680047762.0	(22 Dec 2006)
GB0526416.3	(23 Dec 2005)
CN200680048432.3	(22 Dec 2006)
GB0526416.3	(23 Dec 2005)
IL191747	(27 May 2008)
GB0526416.3	(23 Dec 2005)
IL191754	(27 May 2008)
GB0526416.3	(23 Dec 2005)
JP2006327942	(05 Dec 2006)
JP2008546635	(22 Dec 2006)
GB0526416.3	(23 Dec 2005)
JP2011016078	(28 Jan 2011)
JP2011016086	(28 Jan 2011)
US09/251599	(17 Feb 1999)
JP2631394	(28 Jan 1994)
SG2011016078	(22 Dec 2006)
GB0526416.3	(23 Dec 2005)
SG2011016086	(22 Dec 2006)
GB0526416.3	(23 Dec 2005)
PCT/GB2006/004902	(22 Dec 2006)
GB0526416.3	(23 Dec 2005)
PCT/GB2006/004912	(22 Dec 2006)
GB0526416.3	(23 Dec 2005)

- Very Comprehensive data coverage
- Great usability for IPOS examiners: SG application numbers are searchable in family search

Recommendations on improvements of WIPO-CASE

Search Type

Simple Extended

1. Confused on search type;
Prefer to use extended family search only.

Application No. ▾

sg2011016086

Application Number:

Add Application

Display Tree

Sort: Application No. - ASC ▾

Family Members

Citations

NUMBER	FILING DATE	PCT NUMBER
AU2006327936	(22 Dec 2006)	GB2006/004902
GB0526416.3	(23 Dec 2005)	
AU2006327942	(22 Dec 2006)	GB2006/004912
GB0526416.3	(23 Dec 2005)	
CA2631394	(22 Dec 2006)	PCT/GB2006/004902
GB0526416.3	(23 Dec 2005)	
CA2632154	(22 Dec 2006)	PCT/GB2006/004912
GB0526416.3	(23 Dec 2005)	
CN200680047762.0	(22 Dec 2006)	PCT/GB2006/004912
GB0526416.3	(23 Dec 2005)	
CN200680048432.3	(22 Dec 2006)	PCT/GB2006/004902
GB0526416.3	(23 Dec 2005)	
IL191747	(27 May 2008)	PCT/GB/2006/004902
GB0526416.3	(23 Dec 2005)	
IL191754	(27 May 2008)	PCT/GB/2006/004912
GB0526416.3	(23 Dec 2005)	
JP2006327942	(05 Dec 2006)	
JP2008546635	(22 Dec 2006)	
GB0526416.3	(23 Dec 2005)	
JP2011016078	(28 Jan 2011)	
JP2011016086	(28 Jan 2011)	
US09/251599	(17 Feb 1999)	
JP2631394	(28 Jan 1994)	
SG2011016078	(22 Dec 2006)	
GB0526416.3	(23 Dec 2005)	
SG2011016086	(22 Dec 2006)	
GB0526416.3	(23 Dec 2005)	
PCT/GB2006/004902	(22 Dec 2006)	
GB0526416.3	(23 Dec 2005)	
PCT/GB2006/004912	(22 Dec 2006)	
GB0526416.3	(23 Dec 2005)	

2. This column appears to be redundant for me;
This space can be used to show the counts of SR, WO, prosecution history documents;
3. Legal status “Terminated before grant” rather than “no records”.

Example:

JP2012506145	1	2	32
US2010030971	2	1	19
EP10715406	1	1	44
CN201080016537	1	1	17
KR20117027133	0	1	8
US75990810	1	0	1
KR20137008937	0	0	2
CA2758863	0	0	0

Thank You!