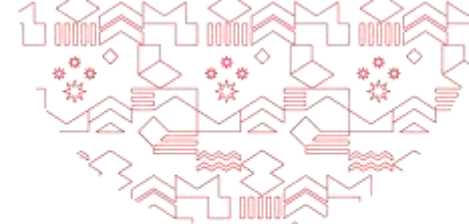




ROSPATENT

Committee on WIPO Standards (CWS): Tenth Session.  
21 – 25 November 2022

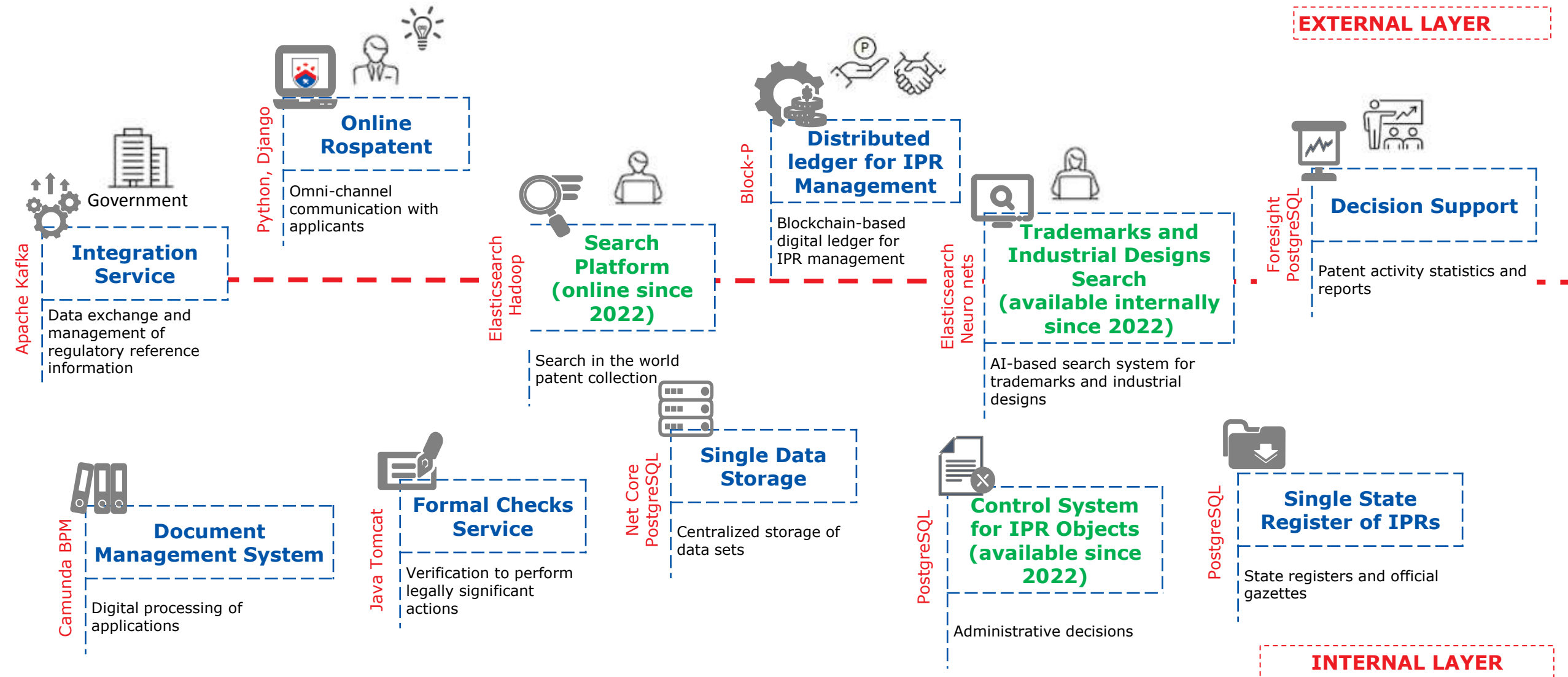
# HOW DIGITAL TRANSFORMATION CHANGES BUSINESS PROCESSES FOR IP STAKEHOLDERS





# IT ARCHITECTURE

## DIGITAL TRANSFORMATION OF ROSPATENT



Putting the information systems into operation is scheduled for **2023**



## USERS AND STAKEHOLDERS

- Business community
- Inventors
- Investors
- Citizens
- Legal entities
- Associations
- Accredited organizations

**PLATFORM IS DESIGNED TO  
RESPOND TO THE CURRENT  
AND POTENTIAL  
CHALLENGES**

## PLATFORM FEATURES

- Automated preliminary assessment of applications
- Patent analytics
- Patent statistics comparison in 35 WIPO technology fields for different countries
- Expert consultations
- Free public access to the worldwide patent information

01.08.2021 the Russian Federation adopted the Federal Law allowing certified scientific and educational organizations to carry out preliminary search and assessment of patentability for inventions and utility models.





# PLATFORM FUNCTIONALITY : MULTIPURPOSE PATENT INFORMATION SEARCH

- **EXPERT MODES**  
*Search results: an object with tags and comments that corresponds to the results and can be forwarded*
- **INTERACTION WITH EXTERNAL RESOURCES**  
*A single window for searching in international patent databases and other sources*
- **SPECIALIZED SEARCHES**  
*Viewing 3D models, searching for chemical formulas and sequence listings, and based on classifications, etc.*
- **PROMISING DEVELOPMENTS**  
*Exploring analysis, multilingualism, distributive thesauruses, identification of links between objects and formation of patent graphs*
- **LARGE-SCALE DATABASE**  
*World Patent Collection, Russian and Soviet patent information, database of sequence listings, integration with STI, specific information*

Rospatent

EN A- A+ Золкин Д. С.

## 02 Similar documents

What are you looking for? Patents

A service for searching for similar documents using artificial intelligence technologies has been created, which allows the user to find semantically similar documents for a given passage or a whole document. This service will allow the user to make a preliminary assessment of the scientific novelty of his invention and find registered patents analogs.

For Developers  
SDK Library Package

Search Patents  
Huge patent database

Related Documents  
Assessment of Scientific Novelty

Trademarks  
Customization Tools

The main principles:  
Coverage extension and information accessibility





## Verbal elements

PRO100  
про сто

various search options:

- Spelling
- Phonetics
- Semantic



## Figurative elements

image search using a neural network

## Attributes

Field search for trademarks and industrial designs, as well as notifications



ТЗ РФ Международные ТЗ Общеизвестные ТЗ РФ

Словесный Изобразительный

По изображению Венская классификация СИЛОИЗ

00944195.jpg Обзор

НАЙТИ

Маша и Медведь

Фильтр

Всего записей: 5365

1 2 3 4

Действует Действует Действует Действует

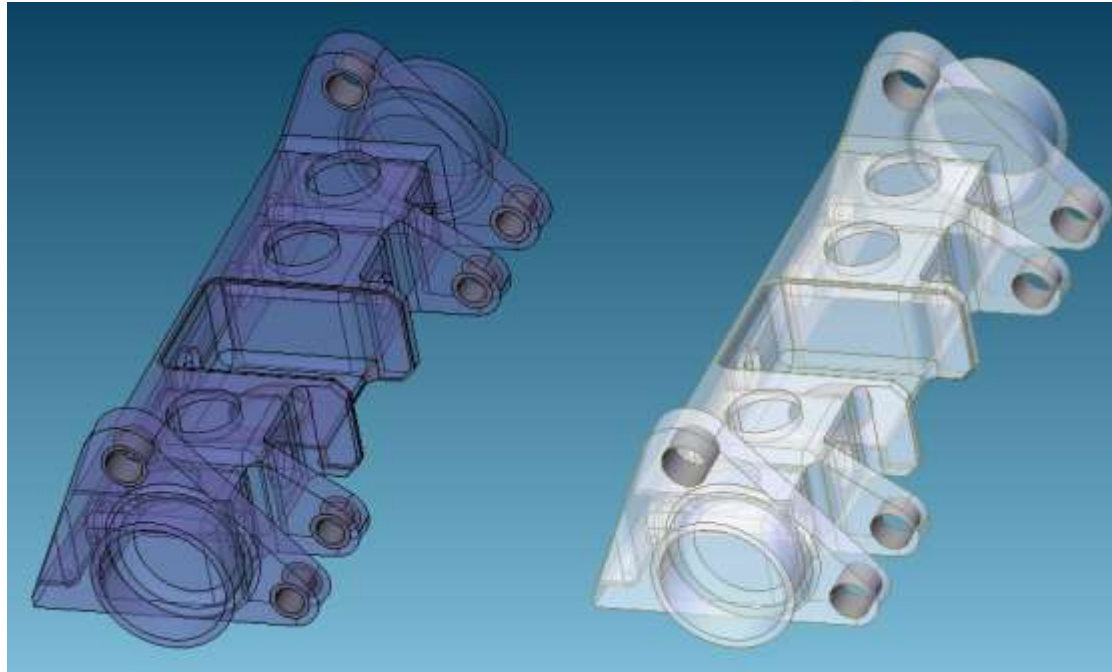
7 8 9 10

Машиньки Сказки

5



# SEARCH AND COMPARISON OF 3D VISUAL REPRESENTATIONS



## AI technologies:

- Machine learning
- construction of descriptors-histograms
- siamese networks

Generation of innovative engineering solutions based on comparison with proven 3D models

Development of technology for three-dimensional printing of objects

Improving the quality of protection of intellectual property rights - reducing litigation in terms of growing volumes of industrial designs



ROSPATENT

Thank you for your attention!