

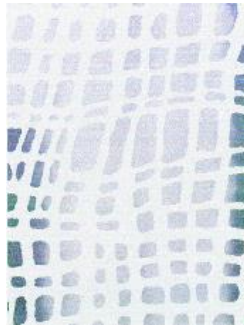
ANNEX 2

Proposals on the document “COMMON CATEGORIES” received on 07/01/2009

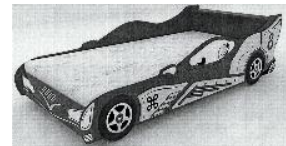
SHAPE/ORNAMENTATION

in the category of shape/ornamentation the following features must be taken into account:

- **abstract/amorphous/asymmetric patterns** must be added to cover ornamentations without a defined form.



- **wheels (parts of furniture)**



- **number of legs of seats/tables** (although in some cases it is difficult to say)



- **Armrests/footrests/backrests** (parts of seats)





- **Sofas with corners** to be distinguished from the ones without



- **Number of seats of sofas**

option a : number of seats 2

option b : number of seats > 2

- the feature XE (shaped to the body) for designs with anatomic form, currently in the category of surface, should be considered as a feature of the category of shape.



SURFACE / MATERIAL

The material of the product to be taken into account. The option XF concerns textile, leather, hair. Similarly, additional options should cover basic materials like wood, metal, plastic, glass, stone.



COLOUR

In the category of colour the option *colour not specified* (YA) to be re-named as *black & white*.