



Dissemination and Utilization of Patent Information

WIPO's initiatives and activities

Tokyo
November 5, 2015

Mussadiq Hussain

Program Officer, Innovation and Technology Support Section

The patent system

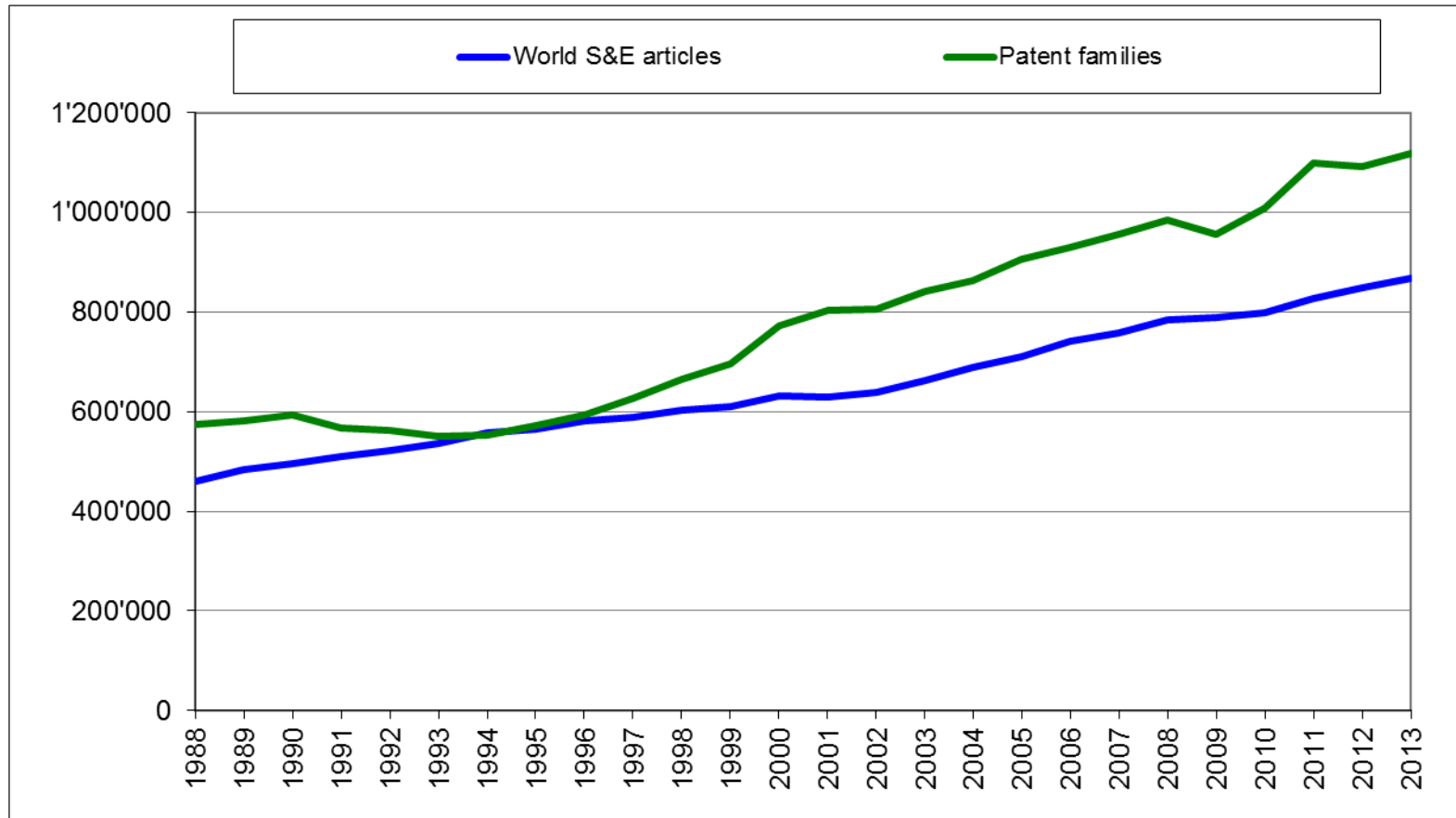
Protection

- Territorial
- Time limited
- Limited by claims
- Prevents others from commercializing the invention

Disclosure

- Global
- Perpetual
- All patent documents
- No restrictions on learning from invention

New technical information worldwide



Source: WIPO Statistics Database and US National Science Foundation, July 2015 (data for 2012 and 2013 extrapolated)

Uses of patent information

- Legal
- Technical
- Business
- Policy making

Patent database systems

- National, Regional and Global
- Free of cost and Commercial
- PATENTSCOPE

PATENTSCOPE



PATENTSCOPE

Mobile | Deutsch | Español | Français | 日本語 | 한국어 | Português | Русский | 中文 | العربية |

Search International and National Patent Collections

WORLD INTELLECTUAL PROPERTY ORGANIZATION

Search

Browse

Translate

Options

News

Login

Help

Home > IP Services > PATENTSCOPE

Simple Search

Using PATENTSCOPE you can search 49 million patent documents including 2.8 million published international patent applications (PCT). Detailed coverage information can be found here (->)




Front Page



Office: All

Search

 PCT Publication [39/2015 \(2015-10-01\)](#) is available.

Learn how to use PATENTSCOPE by watching [the tutorials](#)

Figures

Patent documents	50 million
Patent collections	43
- National	39
- Regional	3
- International	1
Cost	None!

New collections: United Kingdom

- Bibliographic data from 1782
- Patent classification from 1855
- Abstracts from 1855

New collections: Portugal

- Bibliographic data from 1967
- Patent classification from 1967
- Abstracts from 1976
- Full text from 1992

Features

- Flexible interfaces
- Powerful translation
- Rapid data analysis
- Extensive data export
- Customizable options
- Available in multiple languages

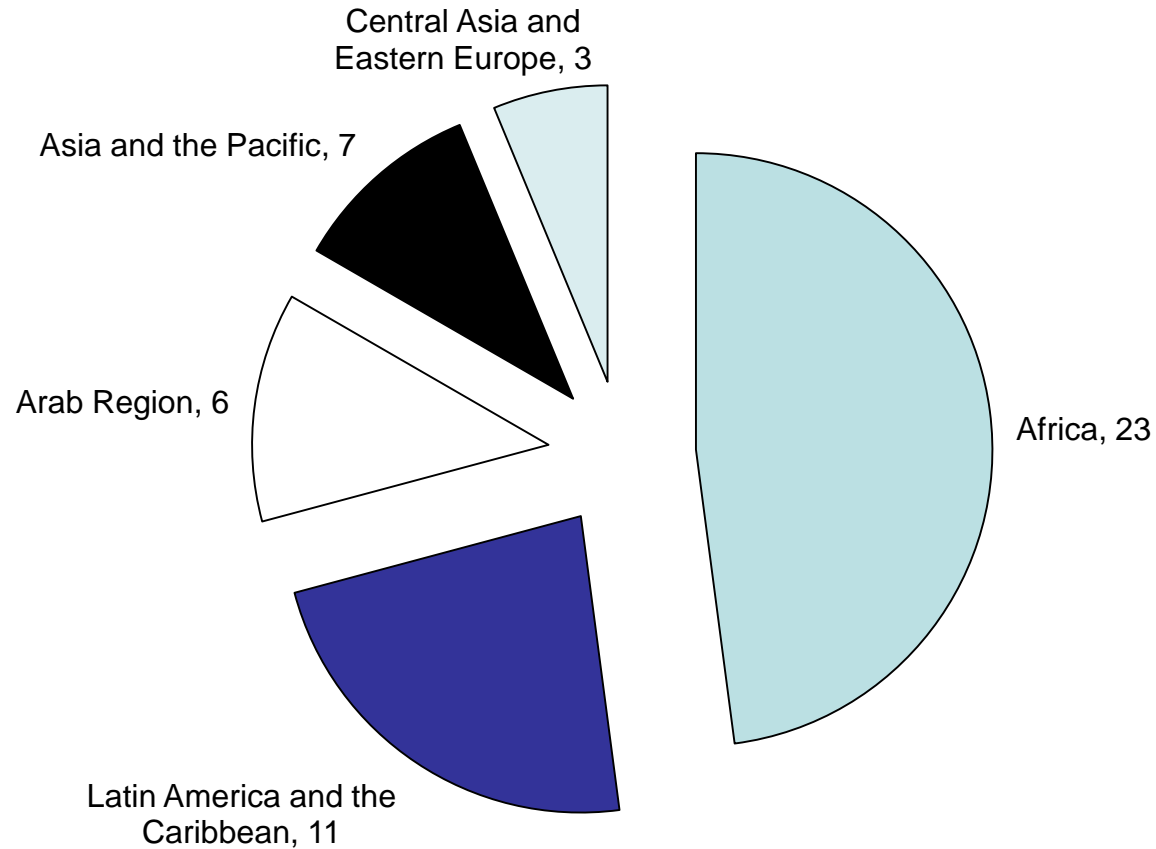
Technology and Innovation Support Centers (TISCs)



- 50 national projects launched
- Over 350 centers opened worldwide
- Over 250'000 inquiries supported annually

Data current as of October 2015

Regional distribution of TISCs



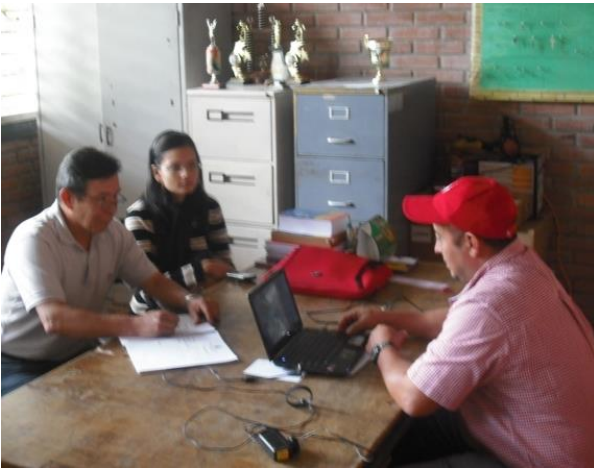
WIPO activities



■ Capacity building

■ Networking

■ Resources



Capacity building

- On-site training → training of trainers
- Distance learning
- Webinars

Networking

- Regional cooperation
- TISC Directory and eTISC

TISC Directory

TISC Directory: Philippines > Cebu City

University of the Philippines Cebu

Contact Information

Address	Gorordo Ave., Lahug, 6000 Cebu City
Telephone	(+63) 322338203 (+63) 322338398
Fax	(+63) 322338398
E-mail	fleurlet@yahoo.com kpespinosa@gmail.com

Technologies and Services

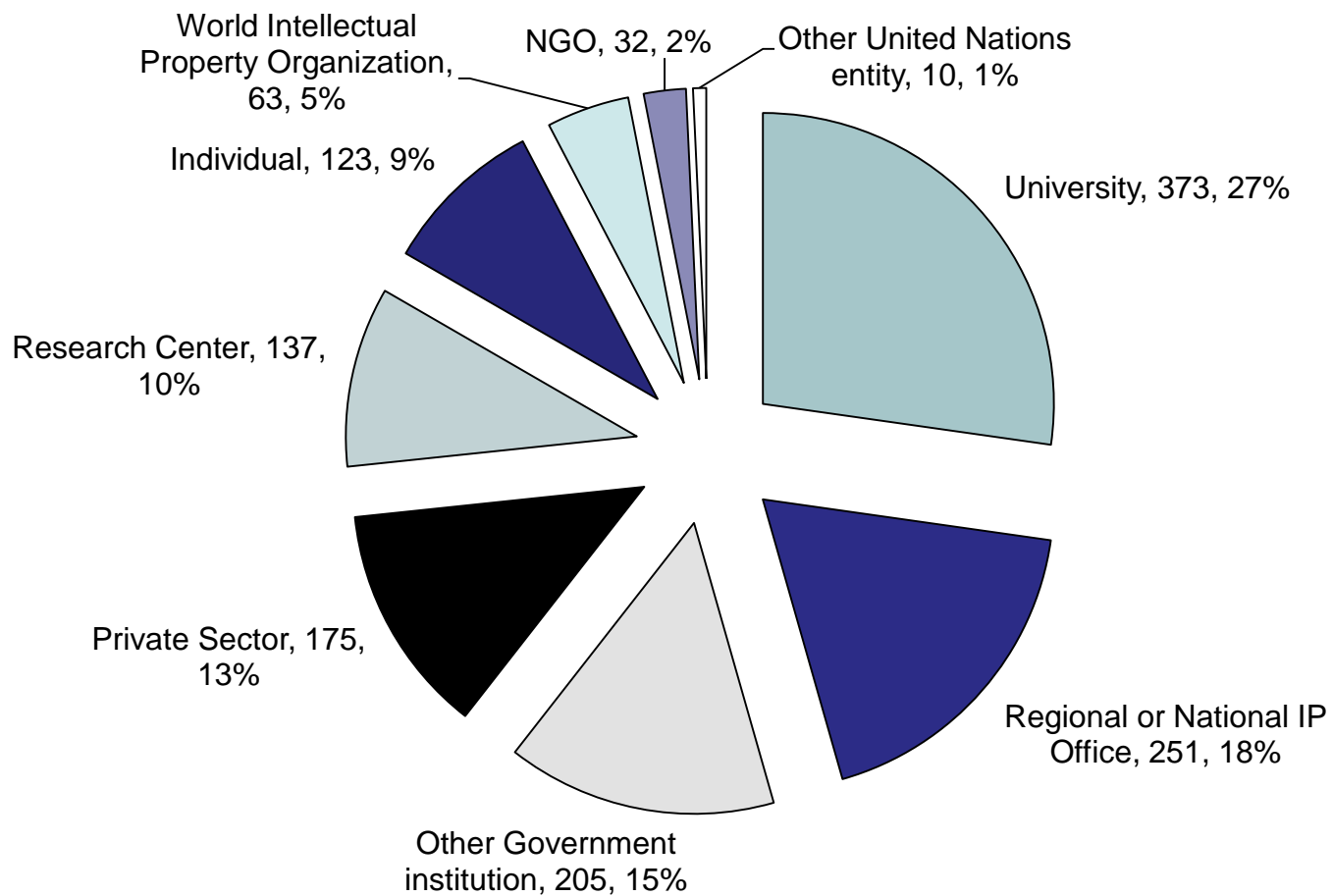
Service(s)	Access to patent and scientific and technical databases Assistance and advice in using databases Assistance and advice on IP management – Licensing, technology transfer Assistance and advice on IP management – Patent drafting, prosecution Search - Freedom to operate, clearance Search - Novelty, patentability Search - State of the art Search - Validity
Specialization(s)	Chemistry and chemical engineering Health and life sciences Information and communication technology
Language(s)	English
Service(s) available to non-residents (foreign clients)	Yes

- Contacts
- Services
- Technology specialization
- Languages
- ➔ Searchable

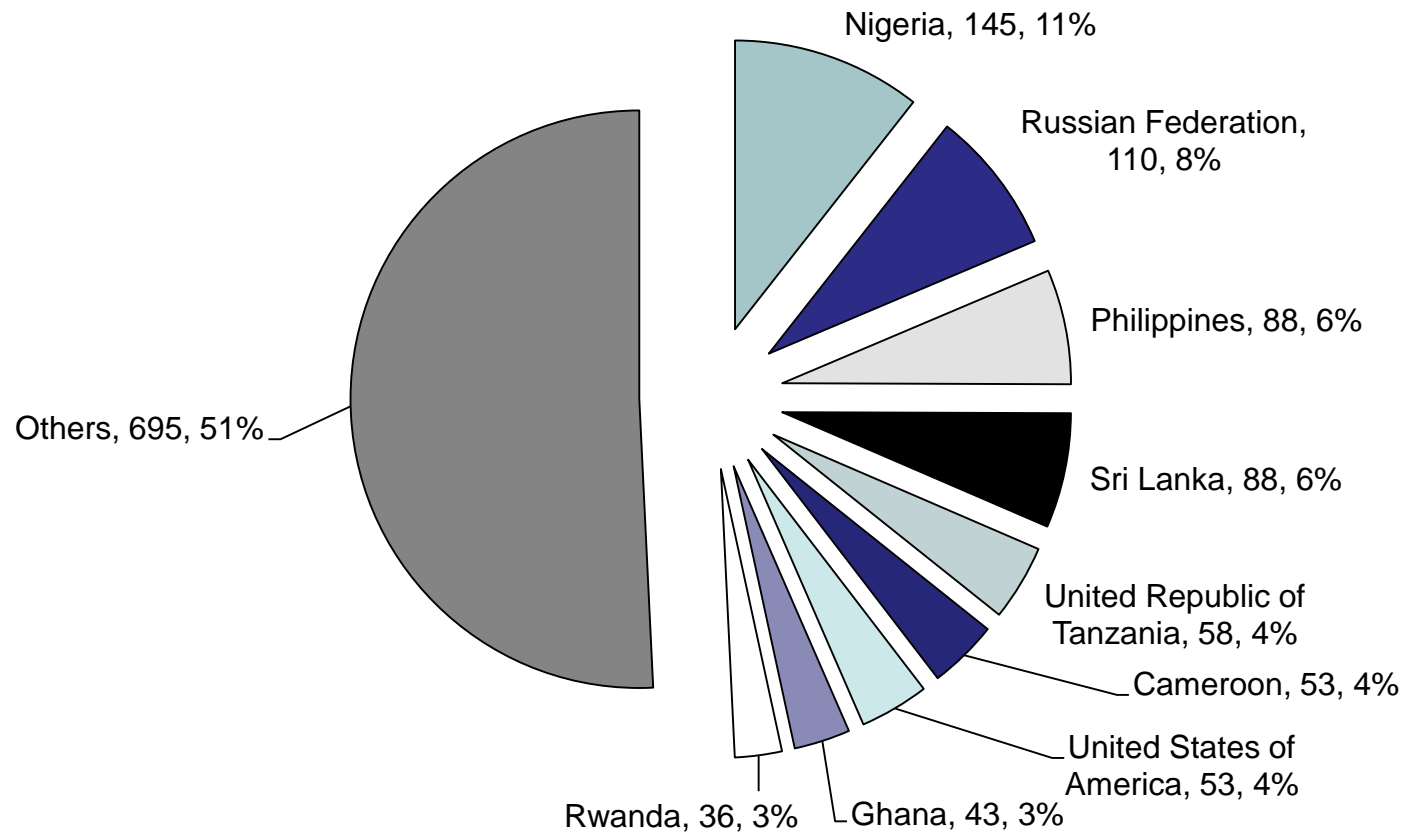
eTISC

- Directory
- Helpdesk (WIPO)
- Forums and groups
- News
- Events
- Webinars
- Special features (“Ask the Expert”, articles)

eTISC: Members



Geographical distribution



eTISC: Translation

The screenshot shows the WIPO eTISC website. At the top left is the WIPO logo and the eTISC text. Below it is a navigation bar with links: HOMEPAGE, MY PAGE, MEMBERS, GROUPS, FORUM, NEWS, EVENTS, WEBINARS, ASK THE EXPERT, CONTACT, and MANAGE. The user profile for Alex Riechel is visible on the left, with options for Sign Out, Inbox (1 new), Friends - Invite, and Settings. Below the profile is a section titled "Awaiting Approval" showing 2 Events and 5 New Members. A red box highlights a "Select Language" dropdown menu with the text "Powered by Google Translate" below it. The main content area shows a blog post titled "Training mixed audiences" by Alex Riechel, dated June 25, 2015. The post text discusses the challenge of presenting to mixed audiences and the importance of knowing the audience. At the bottom left, there is a section titled "Patent database systems and tools" with a list of links: PATENTSCOPE, National and regional patent database systems, and National and regional patent registers (legal status).

Resources

- Publications
- e-Tutorial
- Patent Landscape Reports (PLRs)
- Inventor Assistance Program (IAP)
- ARDI and ASPI

Publications

- TISC Implementation Guide

- TISC brochure
- TISC posters

- Finding Technology Using Patents
- Guide to Patent Information
- Guide to Technology Databases
- PATENTSCOPE Search and CLIR
- PATENTSCOPE Search: The User's Guide

e-Tutorial

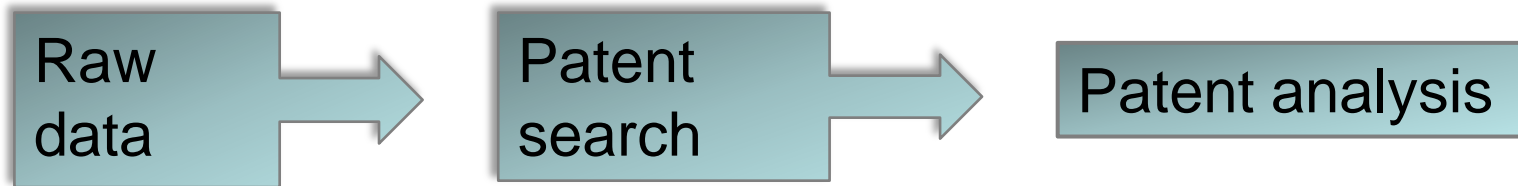
- Patent Basics
- Patent Search and Retrieval
- Patent Analysis

- Tutorials
- Scenarios

Patent Landscape Reports (PLRs)

- Innovation patterns
- Technical, legal and business information
- Patent search methodology
- Different databases and analyzing tools
- Patenting trends

→ Specific technological field/geographical area



WIPO website

The screenshot shows the WIPO website interface. At the top left is the WIPO logo (World Intellectual Property Organization). The top right navigation bar includes links for Media, Meetings, Contact Us, My Account, and English. Below this is a horizontal menu with categories: IP Services, Policy, Cooperation, Reference, About IP, and Inside WIPO. A search bar labeled 'Search WIPO' is on the right. The breadcrumb trail shows: Home > Reference > PATENTSCOPE > Patent Landscapes. The main heading 'Patent Landscape Reports' is highlighted with a red box. Below it, a sub-menu lists 'On this page: WIPO patent landscape reports (PLRs) | PLR Guidelines | Other PLRs'. The main text describes Patent Landscape Reports (PLRs) as providing a snapshot of patent activity for a specific technology, used for policy, research, and transfer. A 'Contact us' button is at the bottom left. On the right, a 'FEATURED PUBLICATION' section displays the cover of 'Guidelines for Preparing Patent Landscape Reports', which features a signpost with arrows pointing to 'WHAT', 'WHERE', 'WHEN', 'WHY', 'HOW', 'QUESTIONS', and 'ANSWERS'.

Patent Landscape Reports

On this page: [WIPO patent landscape reports \(PLRs\)](#) | [PLR Guidelines](#) | [Other PLRs](#)

Patent landscape reports (PLRs) provide a snap-shot of the patent situation of a specific technology, either within a given country or region, or globally. They can inform policy discussions, strategic research planning or technology transfer. They may also be used to analyze the validity of patents based on data about their legal status.

A PLR begins with a state-of-the-art search for the relevant technology in selected patent databases. The search results are then analyzed to answer specific questions about, for example, patterns of patenting activity or of innovation. The results are presented visually to assist understanding and conclusions or recommendations based on the empirical evidence are provided.

[Contact us](#)

FEATURED PUBLICATION

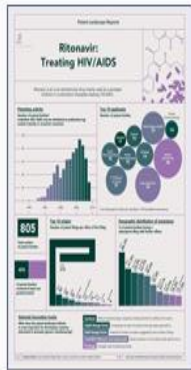
Guidelines for Preparing Patent Landscape Reports

WIPO PLRs

WIPO's patent landscape reports

All reports

Under the Development Agenda project "Developing Tools for Access to Patent Information" WIPO is mandated to produce patent landscape reports in areas of particular interest to developing and least developed countries, such as public health, food security, climate change, and the environment.



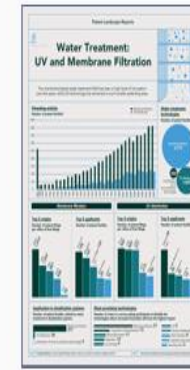
**Ritonavir -
Treating
HIV/AIDS**



**Electronic
Waste
Recycling**



**Animal
Genetic
Resources**



**Membrane
Filtration &
UV Water
Treatment**

PLRs: Themes

- Public Health
- Food and Agriculture
- Environment and Climate Change
- Disabilities

PLRs by other organizations

Patent Landscape Reports by Other Organizations

On this page: [Public health/life sciences](#) | [Climate change/energy](#) | [Food & agriculture](#) | [Other areas of technology](#) |

[Larger patent landscape collections, technology bulletins & other relevant links](#)

The following patent landscape reports - published by international organizations, national intellectual property offices, non-governmental organizations and private sector entities - are freely available or can be obtained upon request, either free of charge or for a fee.

This list, compiled by WIPO, is not exhaustive and we are continuing to extend it. [Contact us](#) with any recommendations you have for other reports to be included.

Shortcuts

[WIPO's patent landscape reports](#)

Other areas of technology

ICT technologies

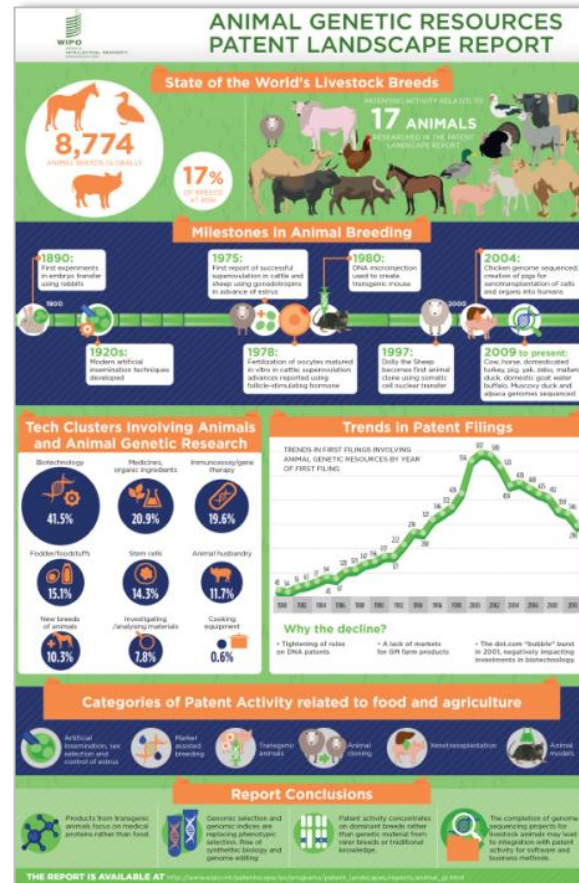
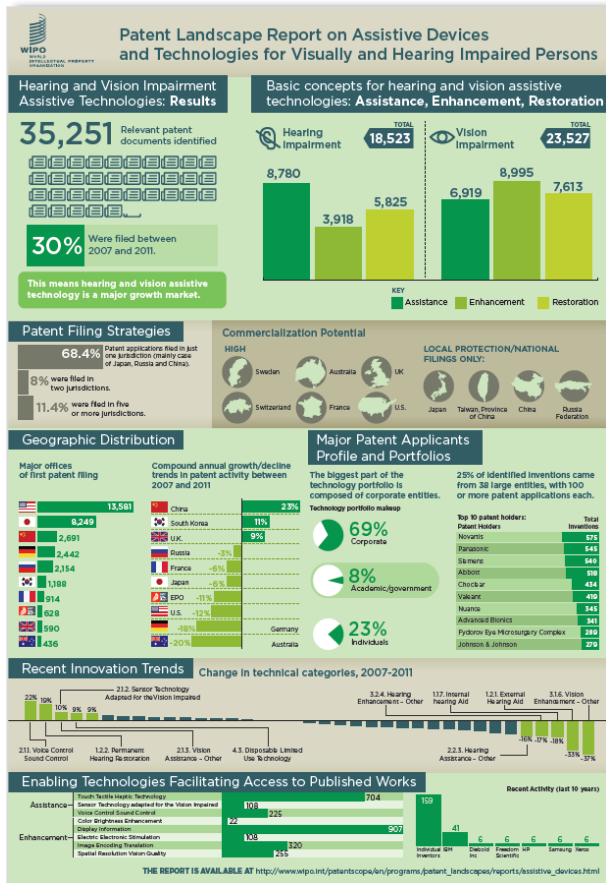
Title	Author	Date	Language
Network Security PDF	LexInnova	2015	English
Technology Insight Report: Shape Memory Materials PDF	Patent INSIGHT Pro	2015	English
Wireless Power PDF	LexInnova	2015	English
Virtual Reality PDF	LexInnova	2015	English
3D Stacked Memory PDF	LexInnova	2015	English
Internet of Things - IoT Day Special Edition PDF	LexInnova	2015	English
FinFET - Extending Moore's Law PDF	LexInnova	2015	English
War of Wallets PDF	LexInnova	2015	English
Technology Insight Report: Gallium Nitride PDF	Patent INSIGHT Pro	2014	English
Technology Insight Report: Nano Fuel Additives	PatSeer	2014	English
Software Defined Networking PDF	LexInnova	2014	English
Internet of Things PDF	Lexinnova	2014	English
Godlike Gaming - A landscape analysis on the future of the gaming industry PDF	Lexinnova	2014	English

PLRs: Benefits

- Take focused approach and make informed decisions
- Avoid duplication, waste of resources and infringement of IP rights
- Facilitate local and international cooperation
- Identify potential for synergies
- Evaluate own market potential and position
- Technology transfer possibilities

PLRs: Infographics

Effective means of disseminating the patent analysis



Example:

- Electronic waste recycling



E-Waste Recycling Technologies (PLR)

- Recoverable materials
- E-waste resources and processing
- Processes and logistics

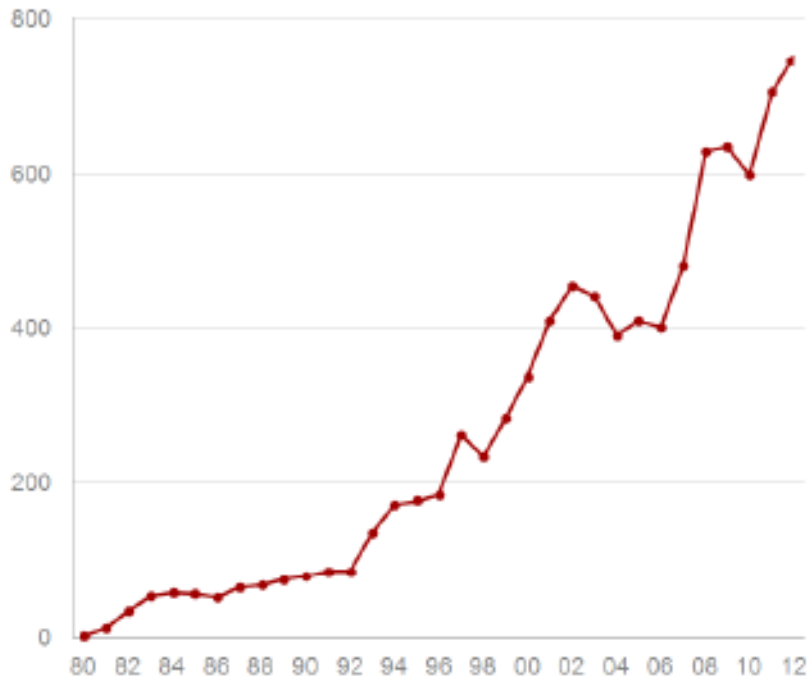


Technology clusters

- Batteries
- Processing
- Printed circuit boards
- Material recovery



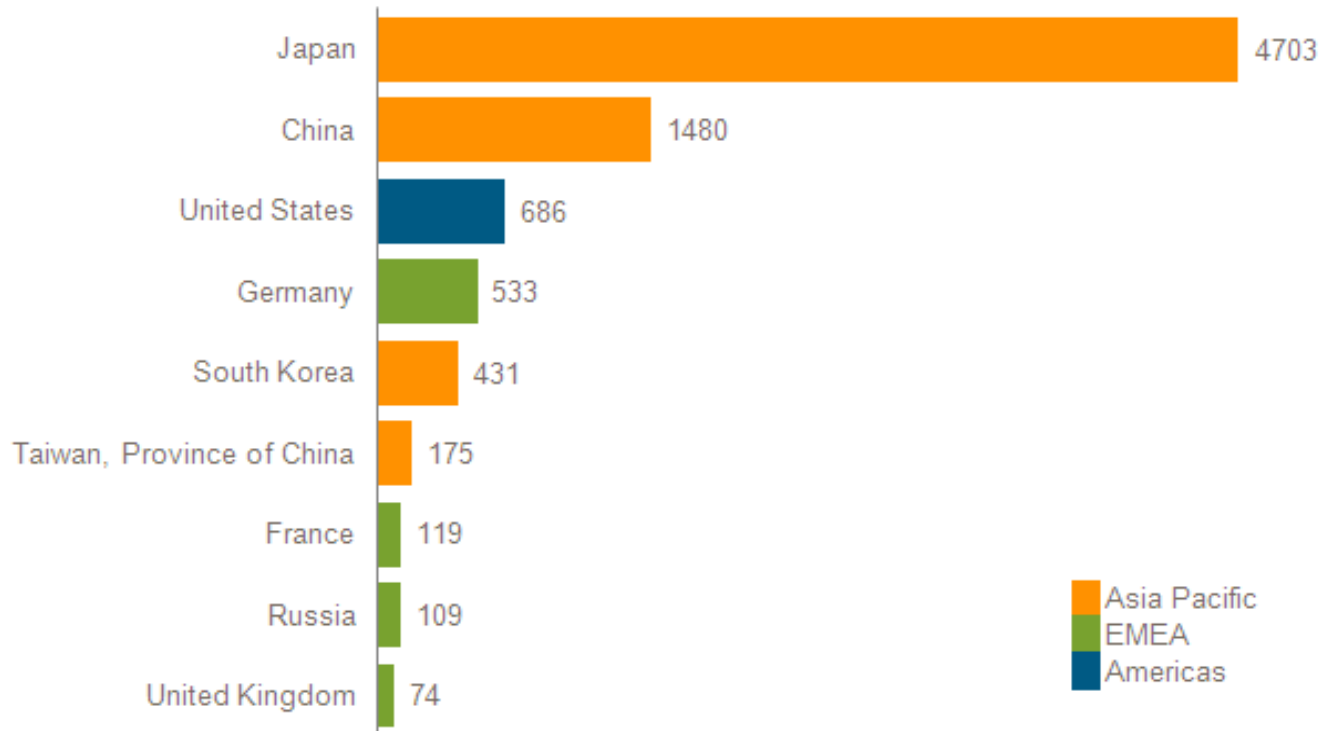
Patenting activity



Number of patent families over time

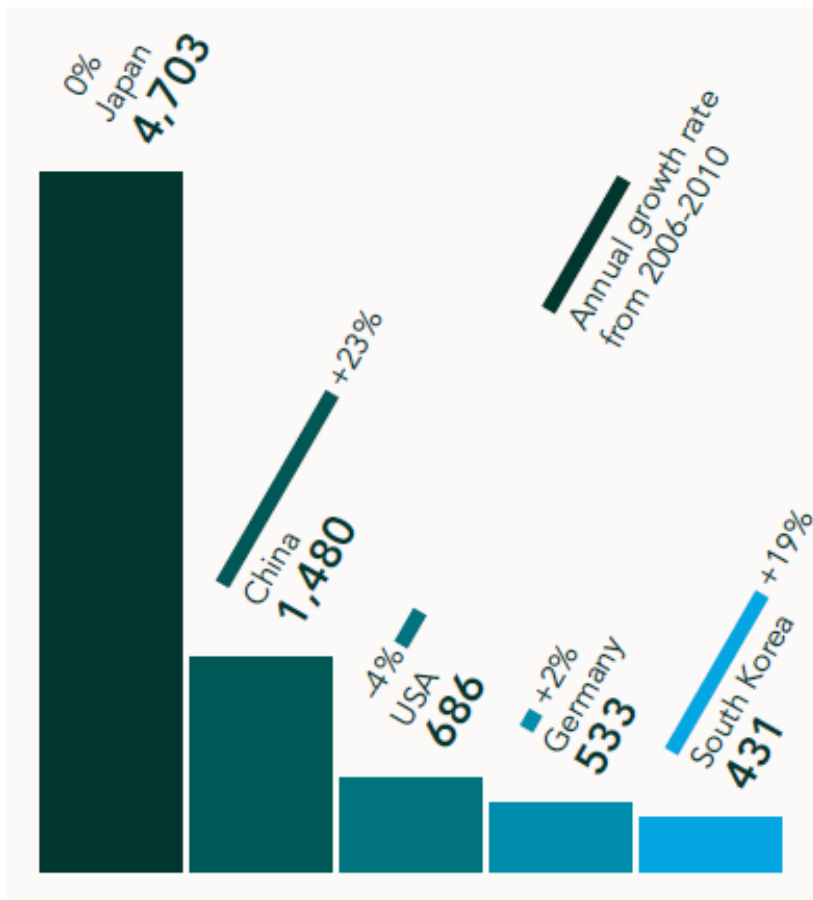
- Nearly 9000 related patent families
- 30% of the patenting activity: last 5 years

Major filing offices



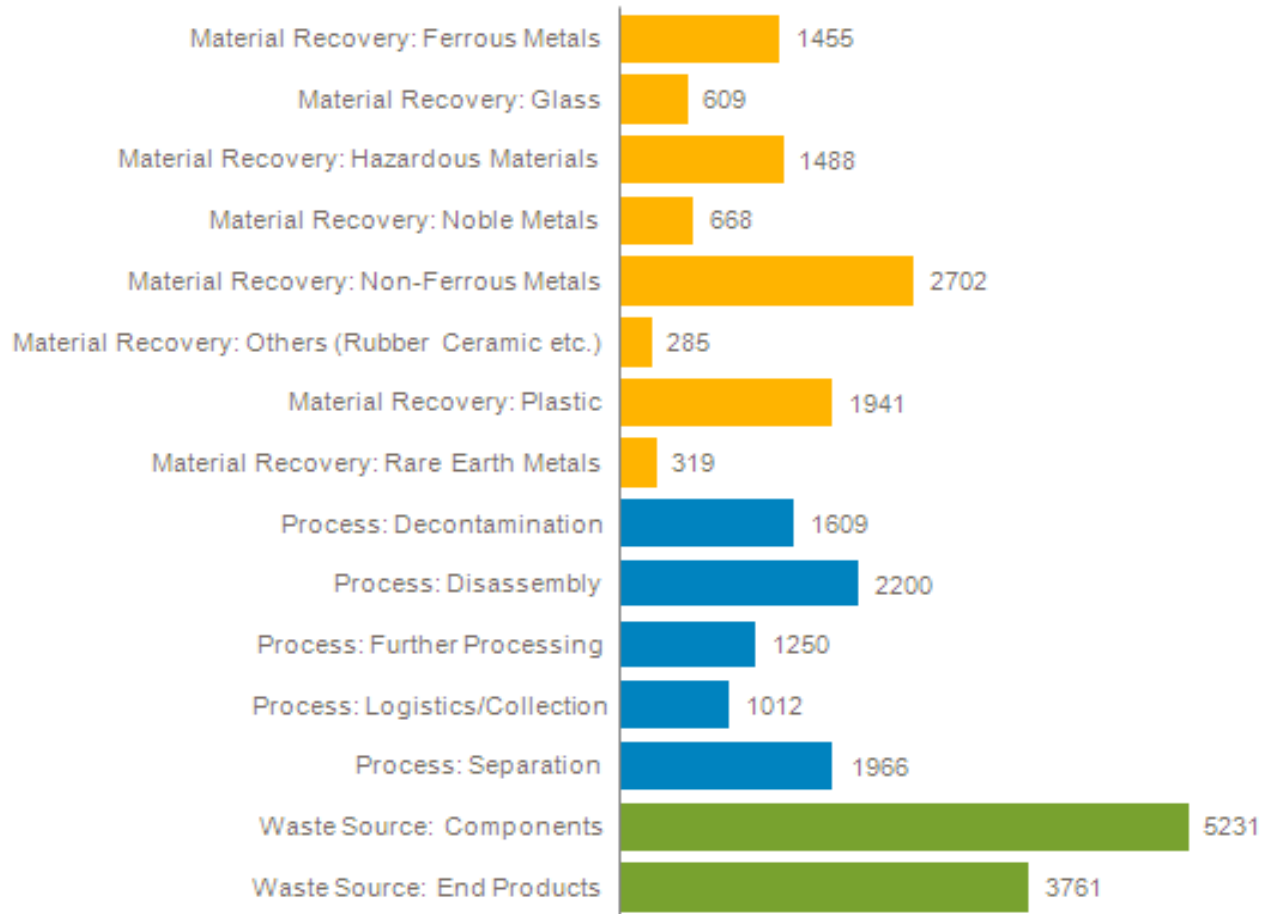
Patent families per major office of first filing since 1980

Top five offices



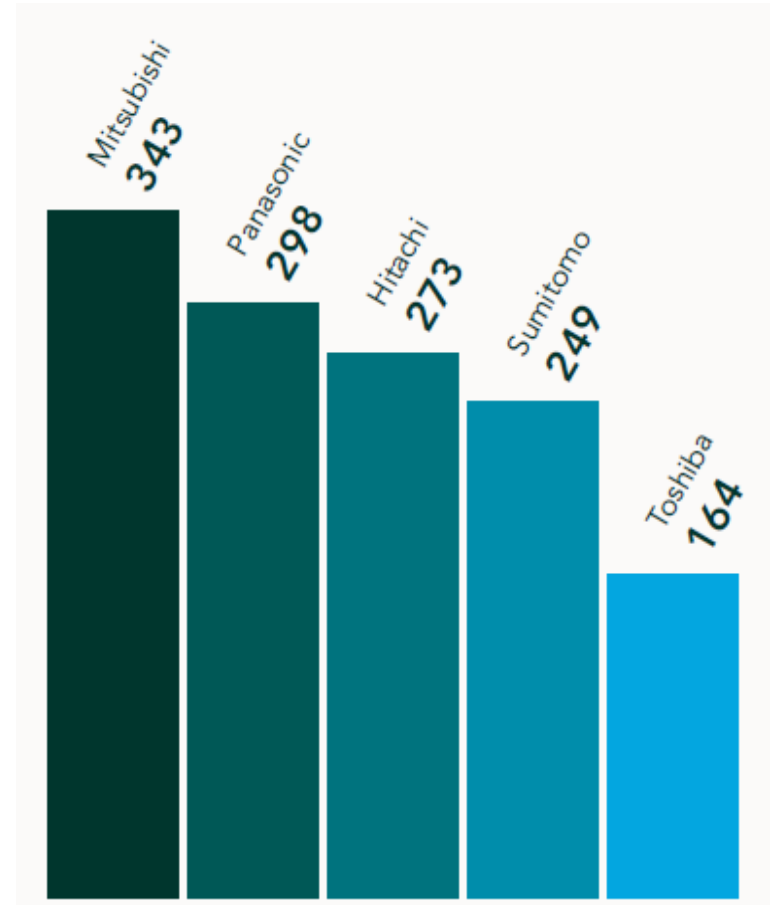
- Growth rate from 2006 to 2010
- Emergence of China and South Korea
- Plateau for Japan

Major technology areas



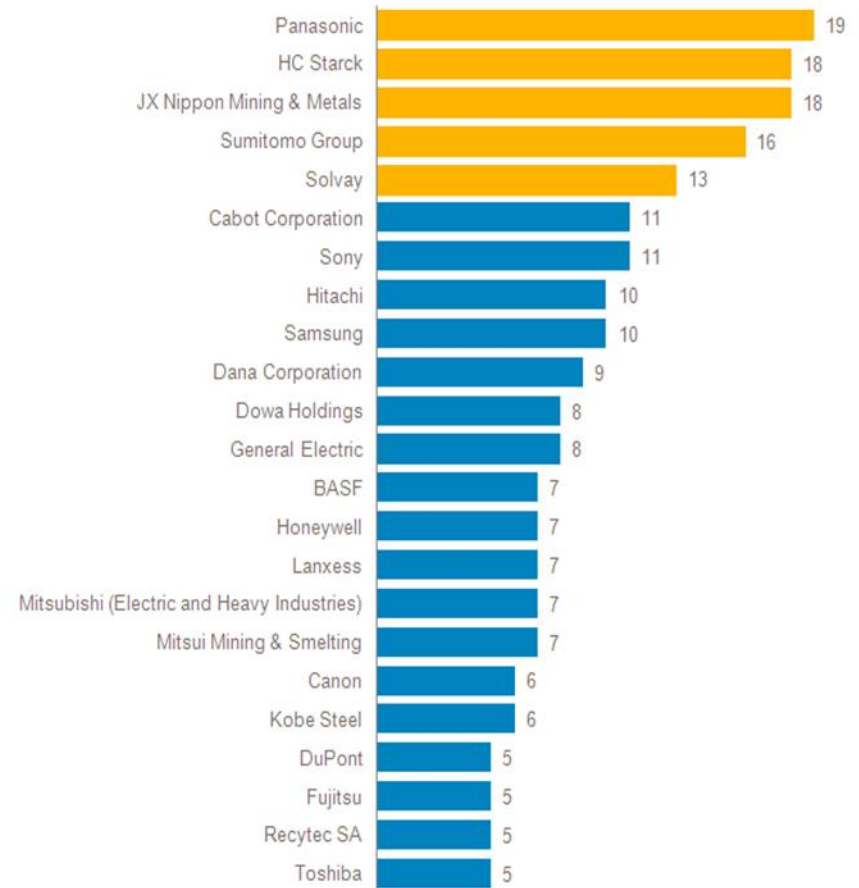
Key players

■ Top applicants in Asia Pacific

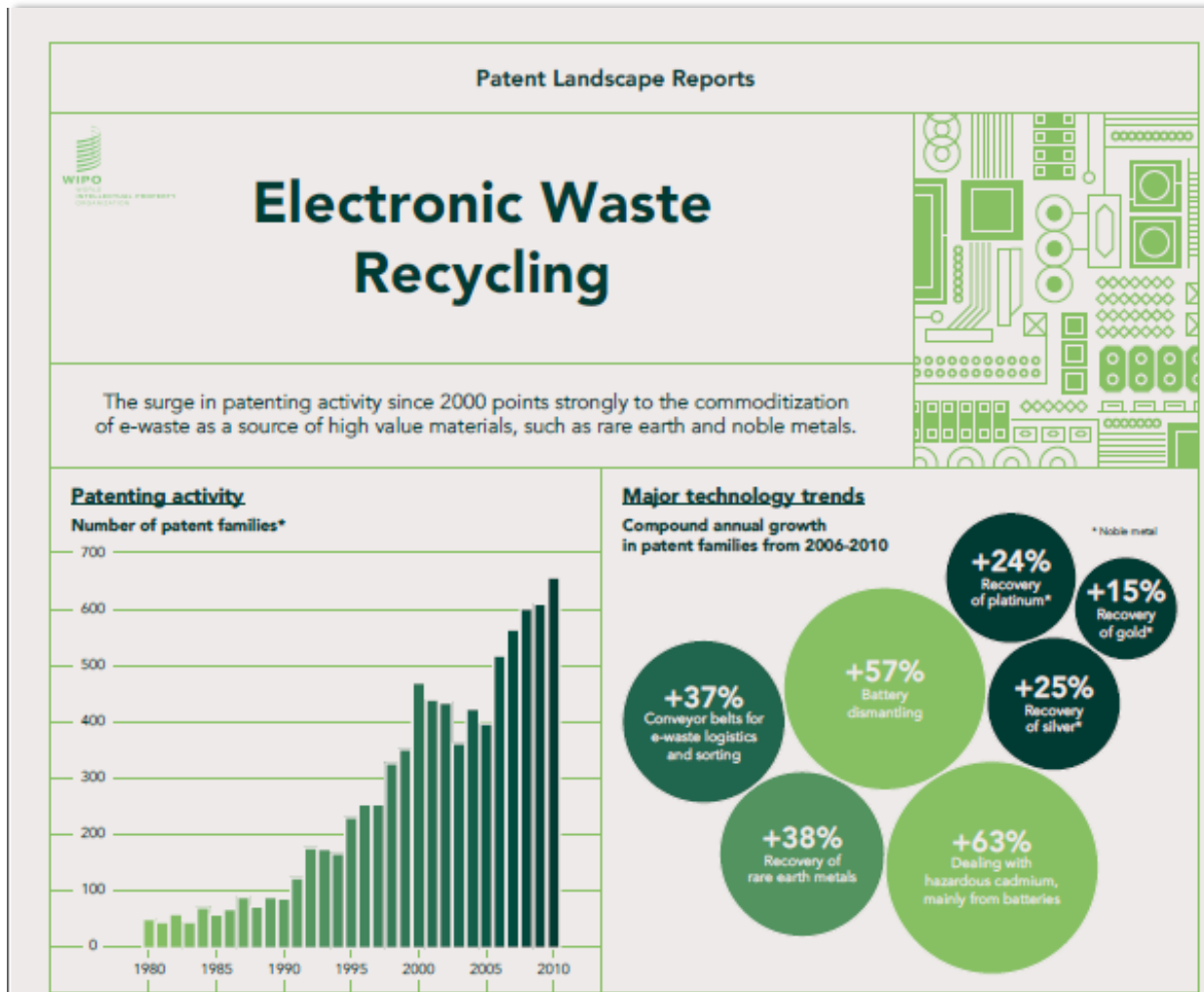


Key players

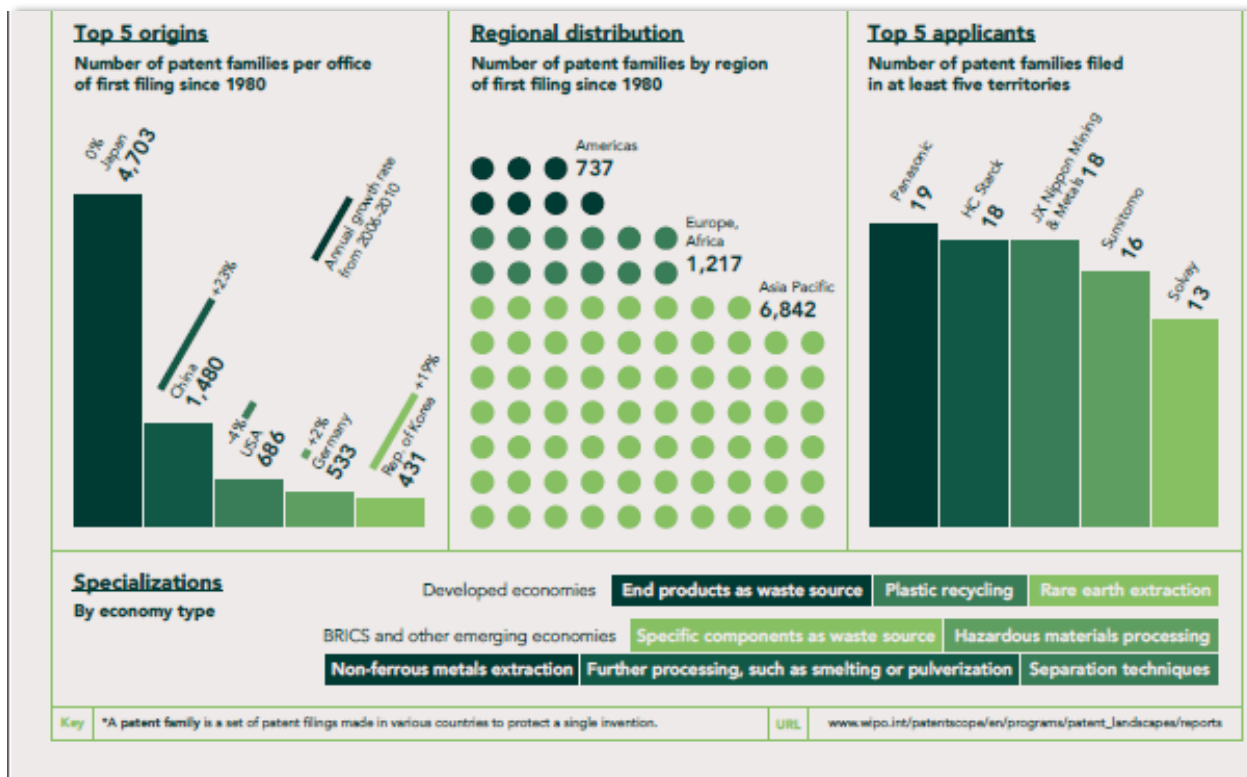
■ Top applicants with filings in at least 5 jurisdictions



Infographic

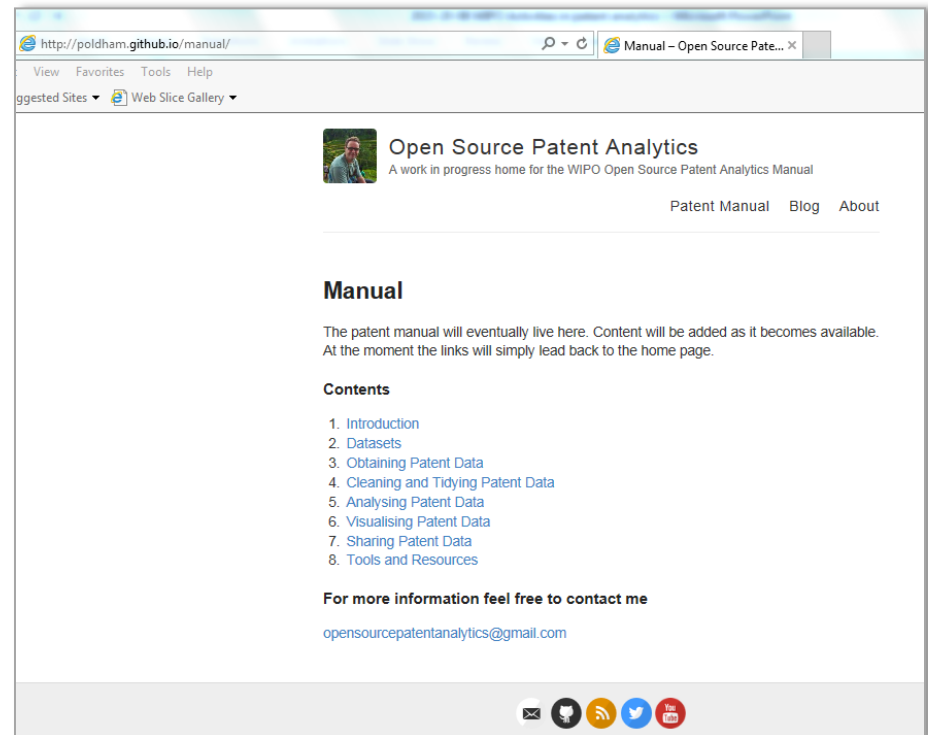


Infographic



Tools for patent analytics

- FIT-JP funded project
- Free and open source tools used for patent analysis
- Ongoing process at Github



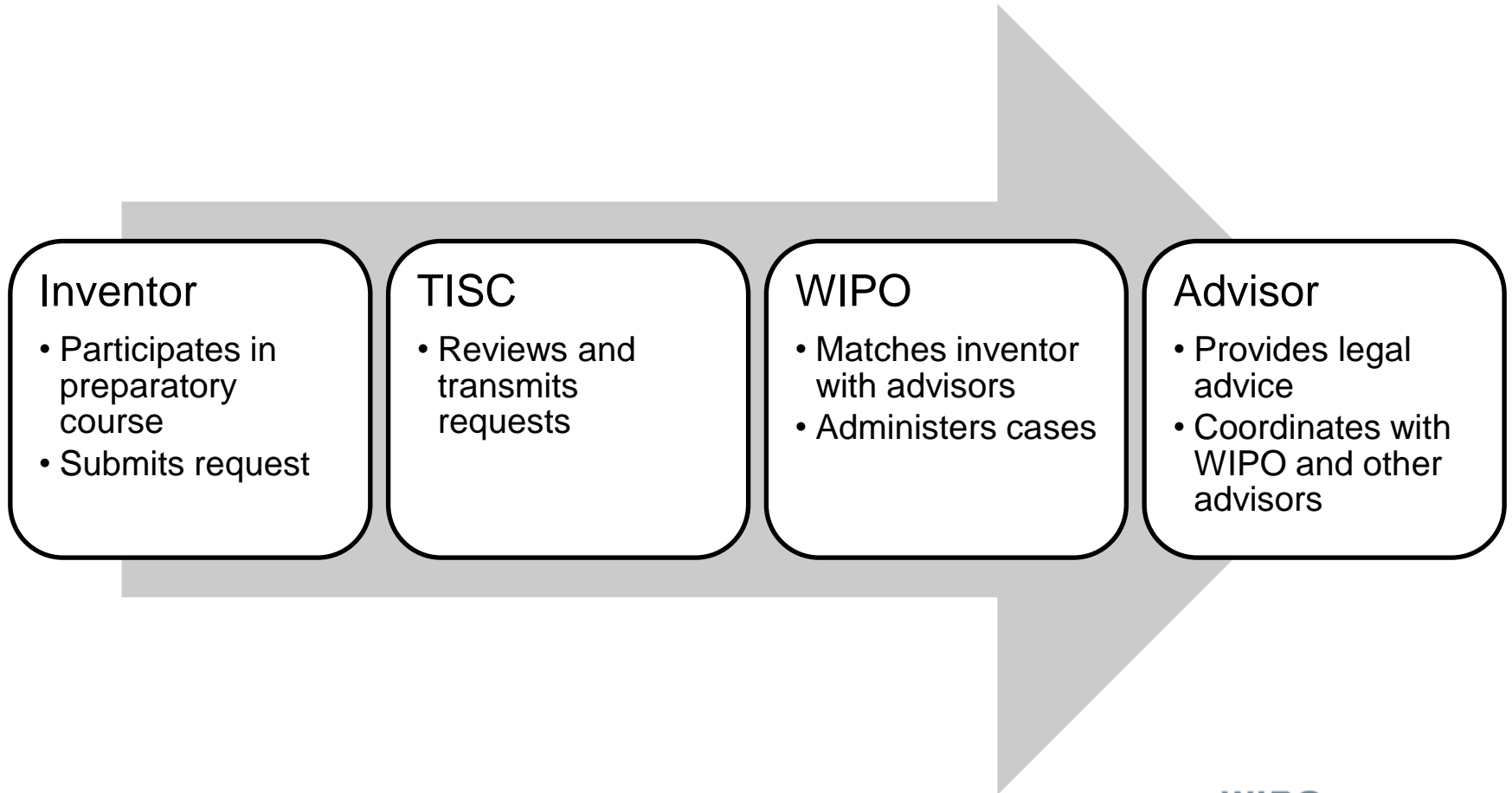
Open source tools manual

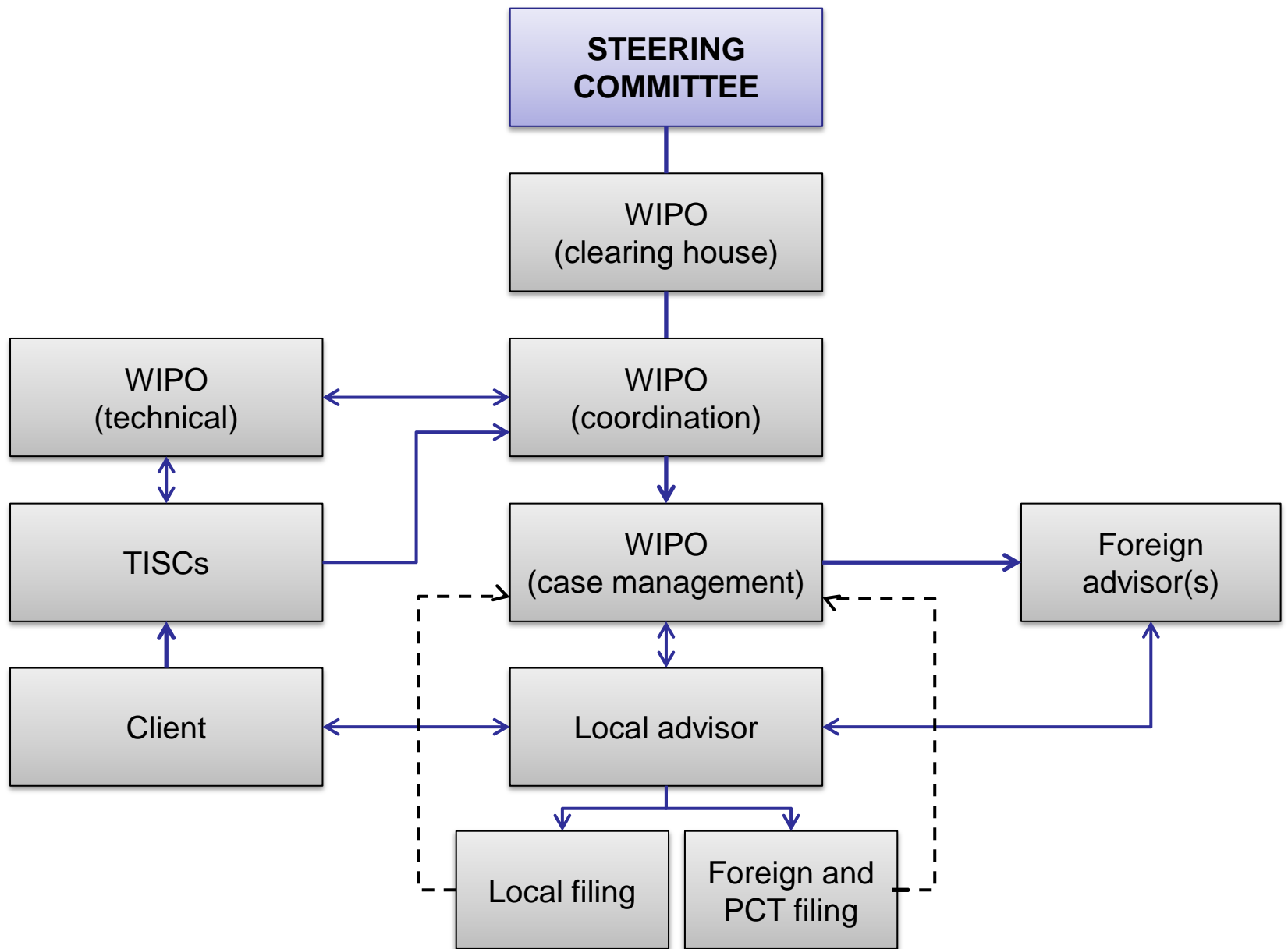
- Various open source and free tools are available
- How to obtain data to use for patent analytics
- How to clean/tidy, analyze, visualize and share data

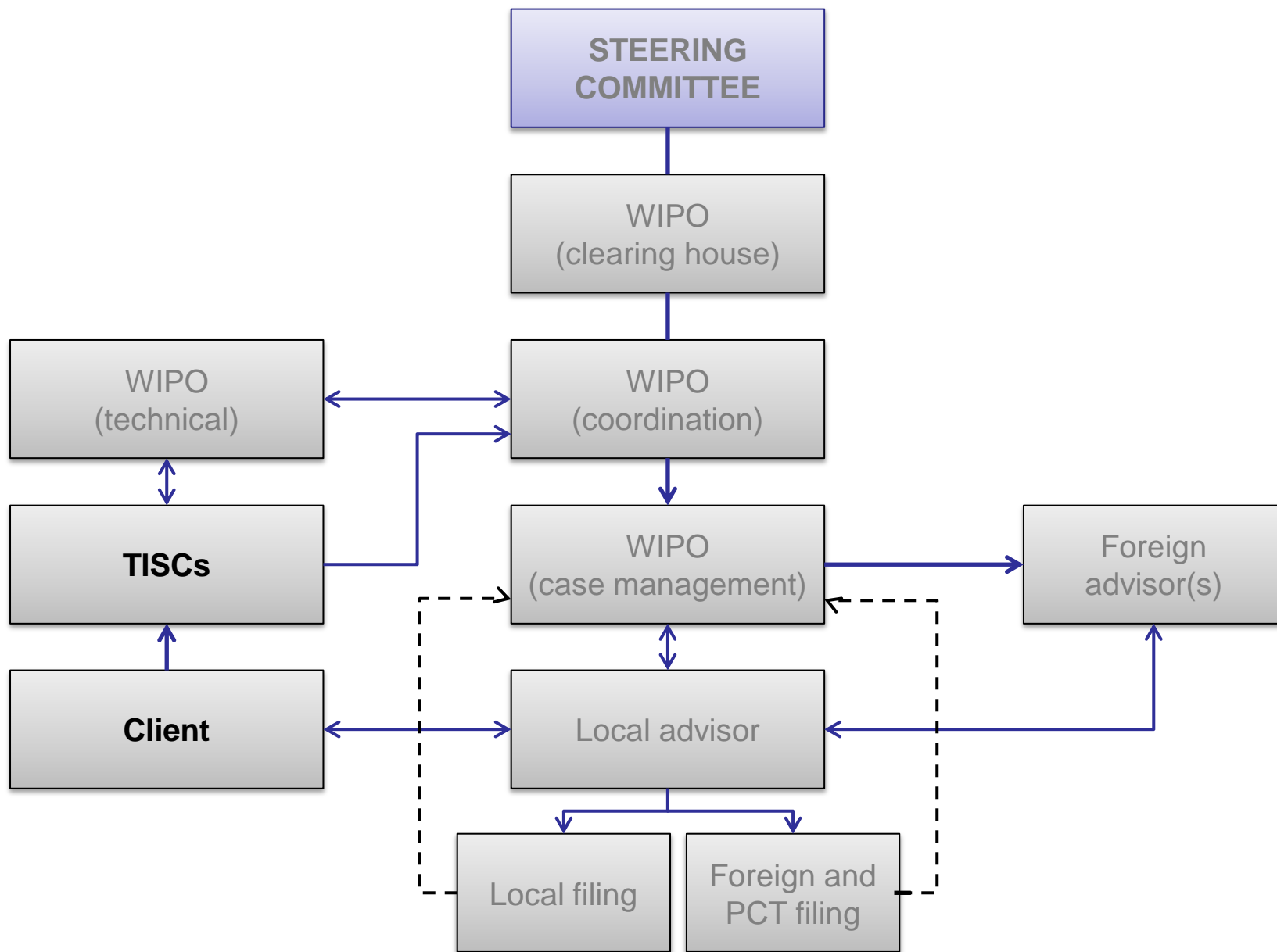
Inventor Assistance Program (IAP)

- Legal assistance in filing and prosecution of patent applications
 - Under-resourced inventors
 - Small enterprises

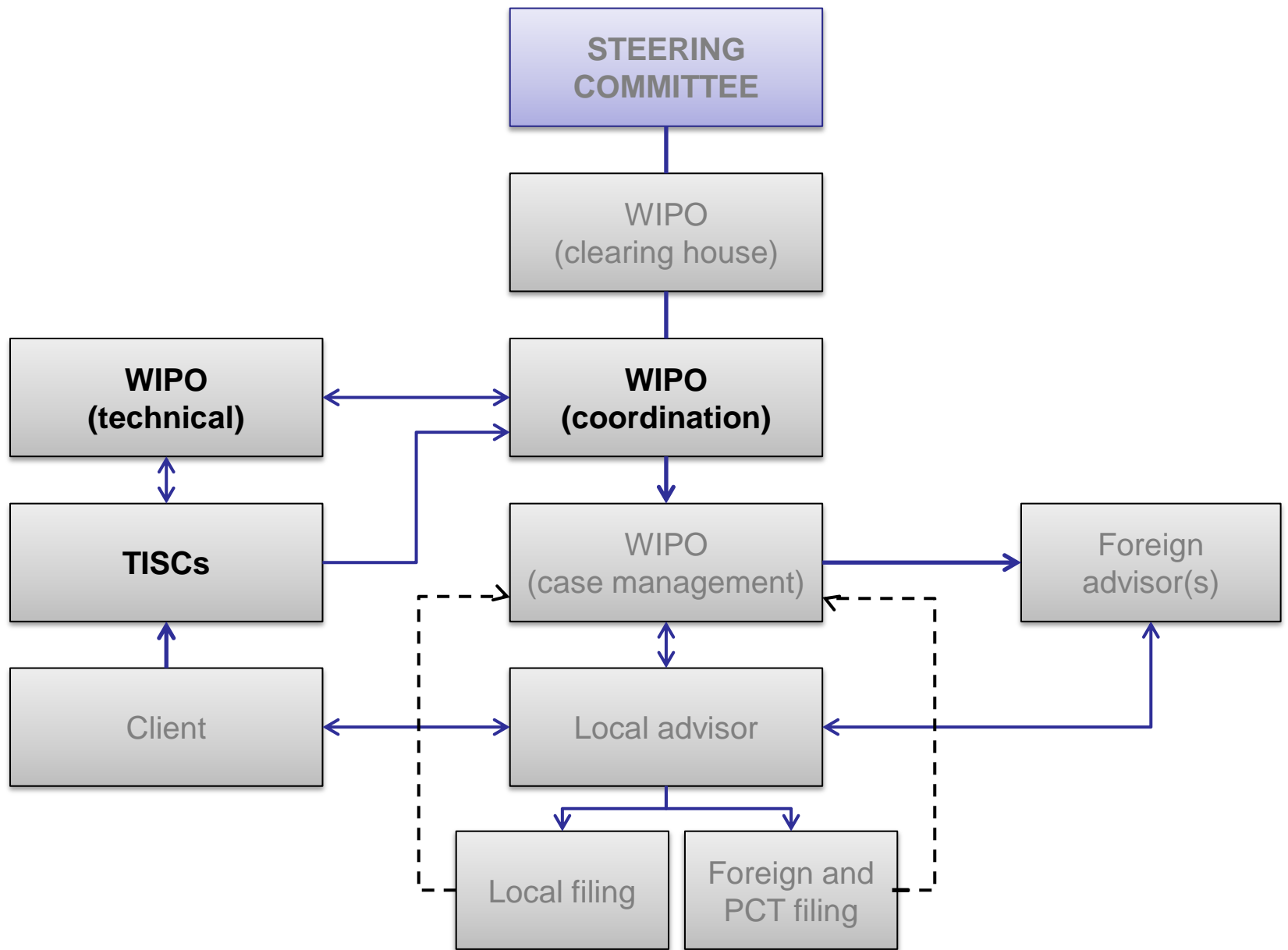
Process



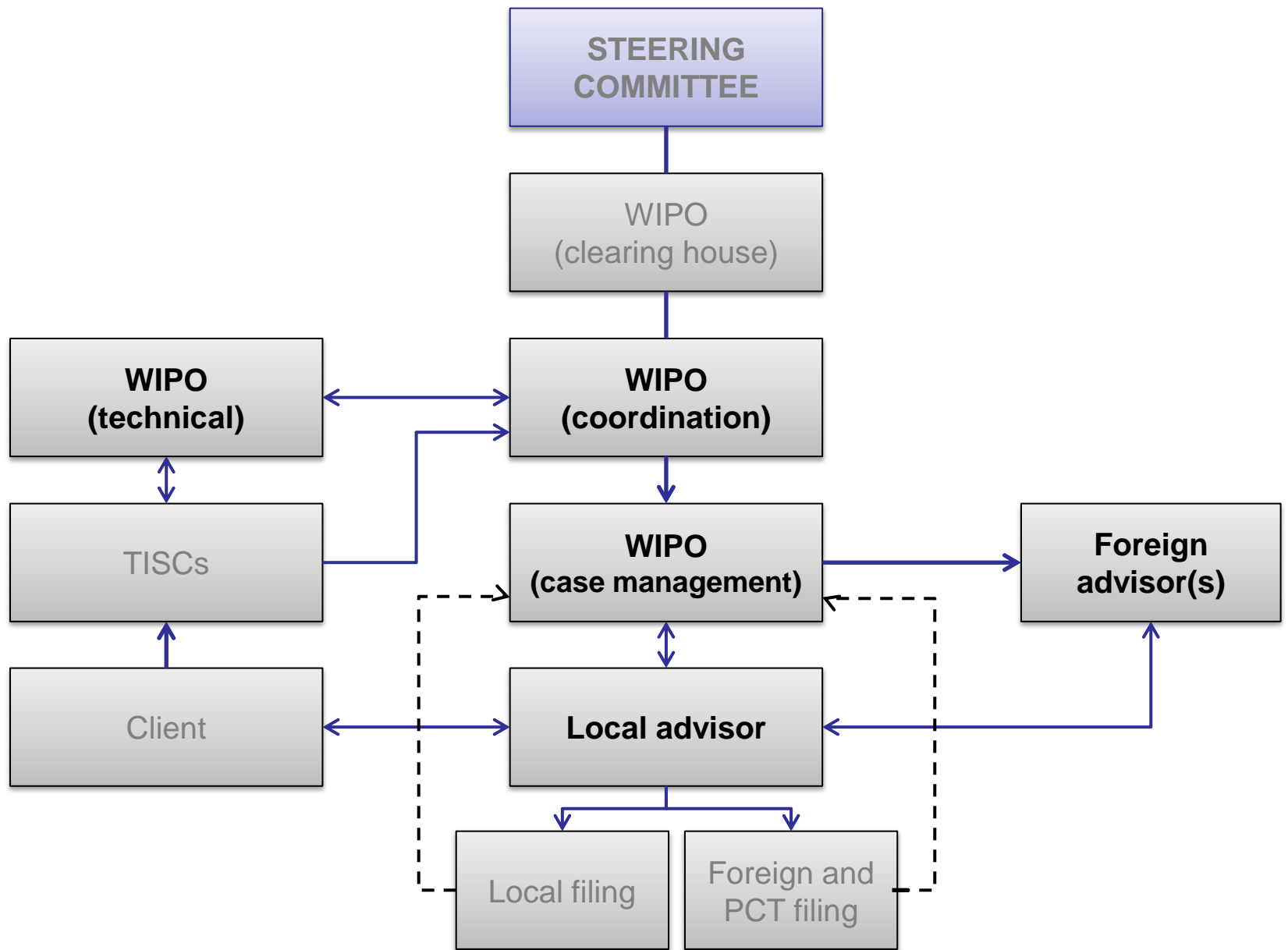




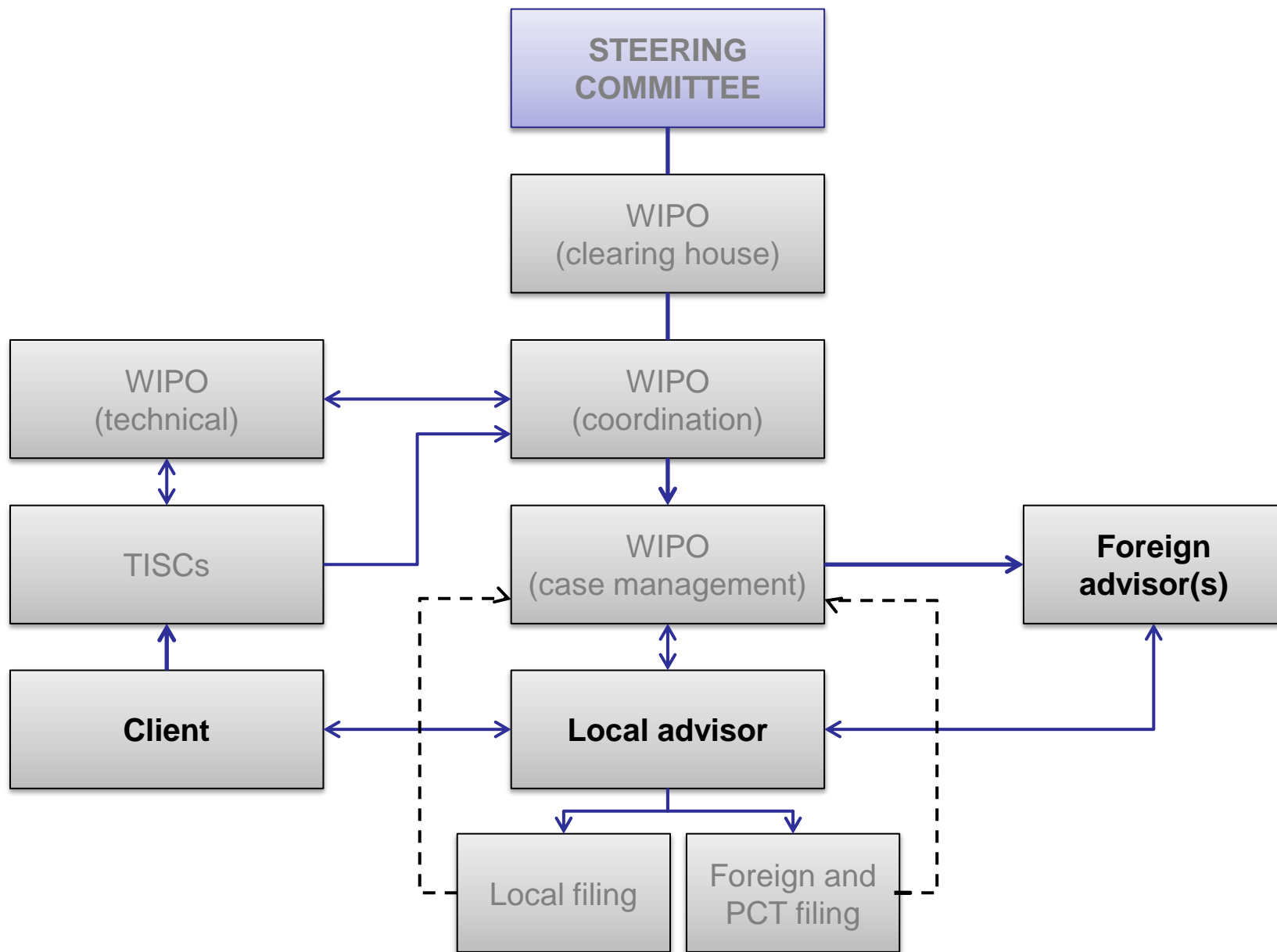
Client submits request to TISC



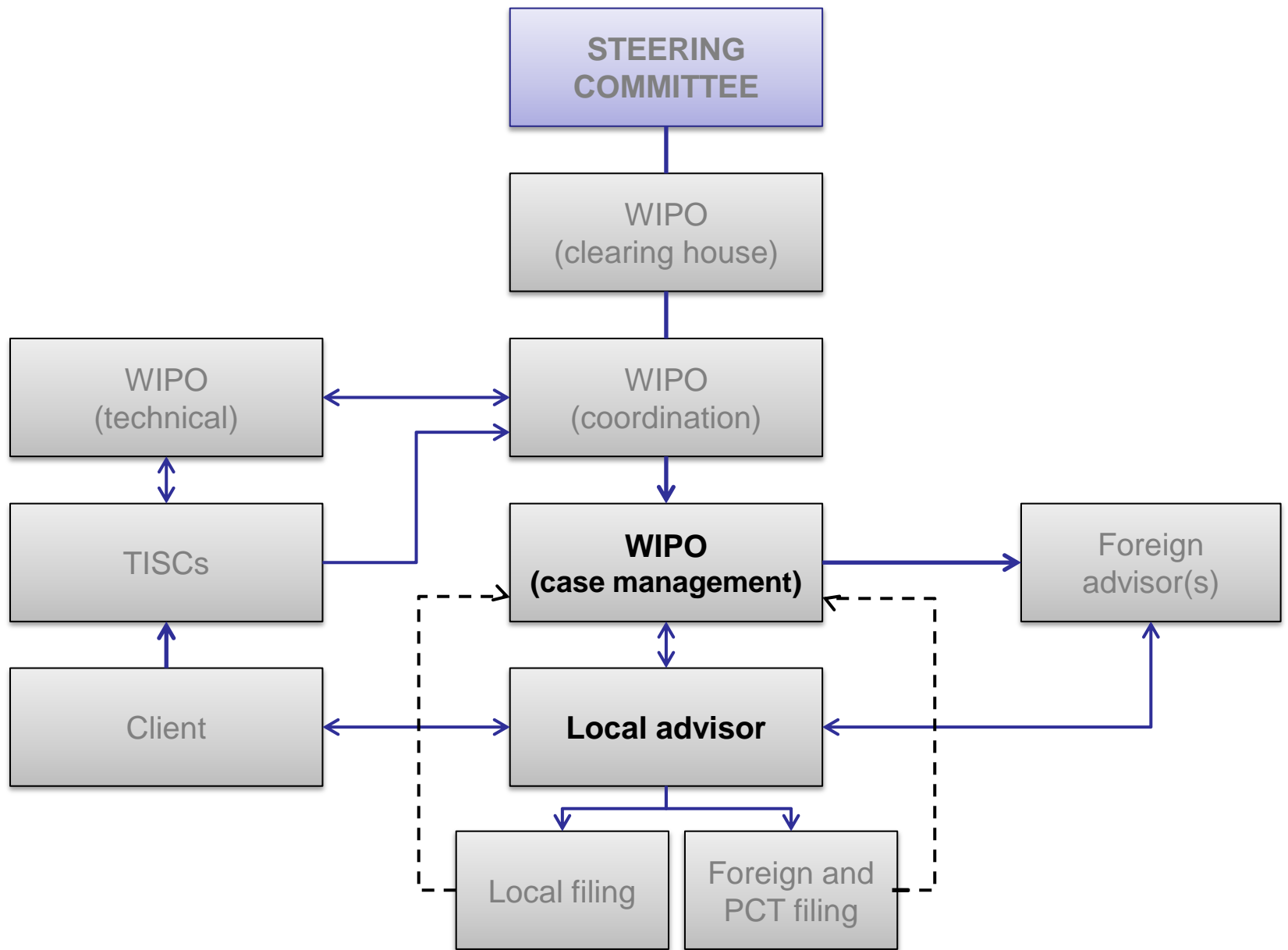
TISC transmits request to WIPO



WIPO designates advisor(s)



Local advisor supports inventor



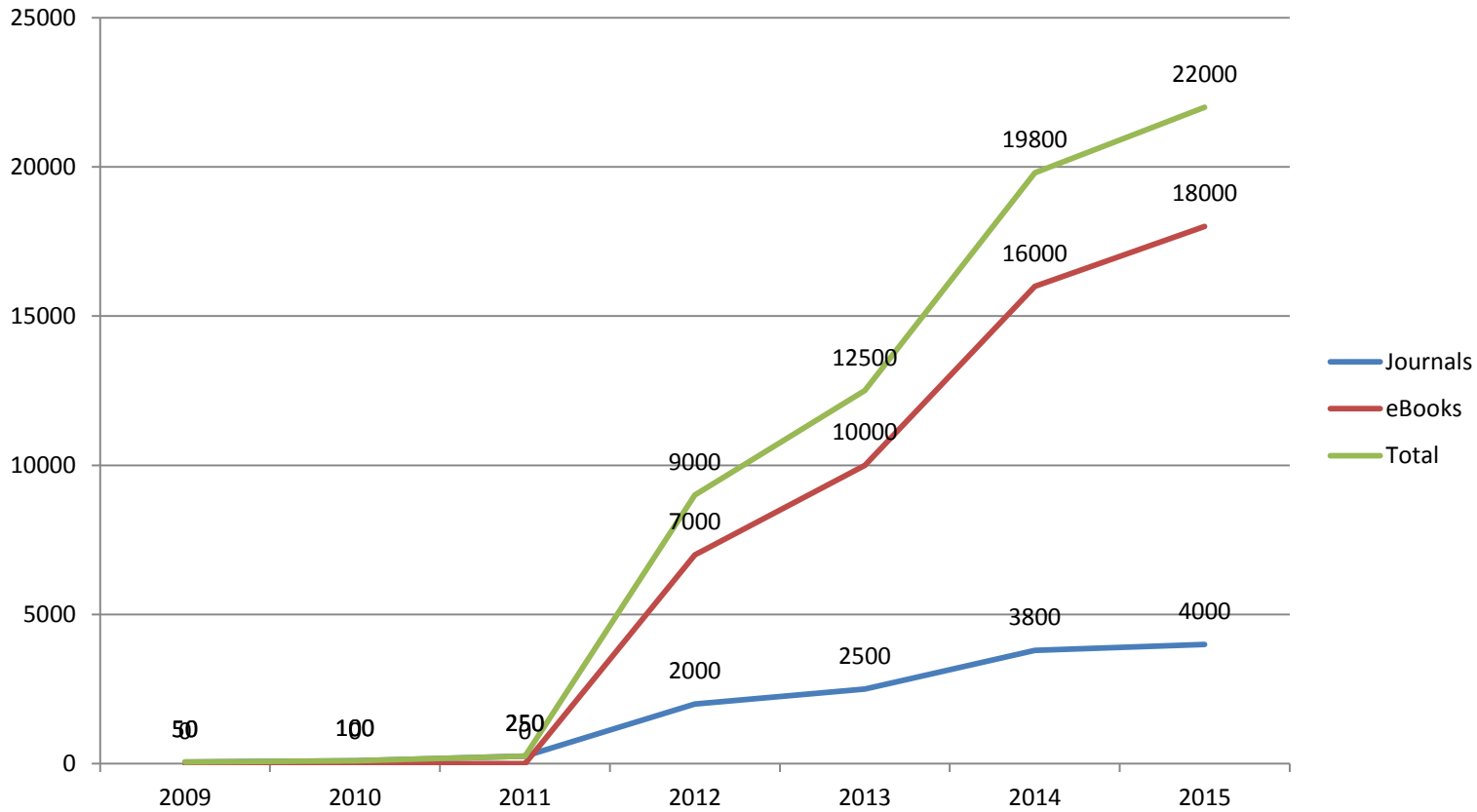
Local advisor reports progress to WIPO

Pilot countries

- Colombia
- Morocco
- Philippines

- Free or low-cost access to science and technology content

Collection



Research4Life: Programs

ARDI
Research for Innovation



World Intellectual Property Organization

HINARI
Research in Health



World Health Organization

AGORA
Research in Agriculture



Food and Agriculture Organization of the United Nations

OARE
Research in the Environment



United Nations Environment Programme

WIPO
WORLD
INTELLECTUAL PROPERTY
ORGANIZATION

ASPI

ACCESS TO SPECIALIZED PATENT INFORMATION

- Free or low-cost access to advanced patent search and analysis tools

Partners



(Photo: LexisNexis).

TotalPatent

Search the largest online collection of enhanced first-level patent data.

Summary [PDF](#)



(Photo: Minesoft).

PatBase

One of the most relied-upon patent databases available, used daily by patent professionals around the world as their primary search tool. Summary [PDF](#)



(Photo: Questel).

Orbit.com

Portal for patent, design, and legal professionals looking for a comprehensive coverage and powerful tools. Summary.



(Photo: Thomson Reuters).

Thomson Innovation

The world's most comprehensive IP research and analysis platform.

Summary [PDF](#)



(Photo: WIPS Global).

WIPS Global

Worldwide patent information online service. Summary [PDF](#)



(Photo: Gridlogics).

PatSeer

Redefining Patent Research, Analysis, Project Management & Collaboration. Summary [PDF](#)

tisc@wipo.int

Links

<http://www.wipo.int>

<http://www.wipo.int/tisc>

<http://www.wipo.int/ardi>

<http://www.wipo.int/aspi>

<http://etisc.wipo.org/>

http://www.wipo.int/patentscope/en/programs/patent_landscapes

<http://poldham.github.io/manual/>

<https://www.youtube.com/channel/UCwFhEASbKdm6WYoax73XsOw/videos>

<https://www.surveymonkey.com/s/NFRM2W3>

<http://www.wipo.int/iap>