



# WIPO Regional Training Workshop

Topic 13: WIPO Publish

Daniel Cheng, Victoria Falls, October 19-23, 2015

WIPO Industrial Property Business Solutions Division (IPOBSD)

# WIPO PUBLISH

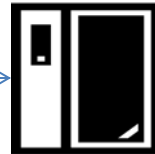
- National or Regional platform
- Data extraction from IPAS+ or database connectors
- Data format
- Installation, configuration and customization
- Search
- Services
- Also work as a simple intranet Electronic Document Management System (EDMS)

# USE IN NATIONAL MODE



OFFICE Staff

Registration of  
Trademark, Design and Patent applications



WIPO IPAS



PATENTSCOPE

Search International and National Patent Collections

WIPO  
CASE

Data Extraction

Pub. No.	Pub. Date	Pub. No.	Pub. Date	Pub. No.	Pub. Date
3/2015/001	2015.01.01	3/2015/002	2015.01.01	3/2015/003	2015.01.01
3/2015/004	2015.01.01	3/2015/005	2015.01.01	3/2015/006	2015.01.01
3/2015/007	2015.01.01	3/2015/008	2015.01.01	3/2015/009	2015.01.01
3/2015/010	2015.01.01	3/2015/011	2015.01.01	3/2015/012	2015.01.01

WIPO PUBLISH Web Search

Publication



WIPO Publish

Data Sharing with  
third parties  
(e.g. WIPO)

```

<?xml version="1.0" encoding="UTF-8" ?>
<search-results xmlns="http://www.wipo.int/ipas/data/schema/v1" >
  <total-records>1</total-records>
  <record>
    <document-id>WIPO_PUB_2015_001</document-id>
    <document-title>WIPO_PUB_2015_001</document-title>
    <document-type>WIPO_PUB_2015_001</document-type>
    <document-abstract>WIPO_PUB_2015_001</document-abstract>
    <document-claims>WIPO_PUB_2015_001</document-claims>
    <document-description>WIPO_PUB_2015_001</document-description>
    <document-figures>WIPO_PUB_2015_001</document-figures>
    <document-images>WIPO_PUB_2015_001</document-images>
    <document-legal-events>WIPO_PUB_2015_001</document-legal-events>
    <document-legal-status>WIPO_PUB_2015_001</document-legal-status>
    <document-legal-entities>WIPO_PUB_2015_001</document-legal-entities>
    <document-legal-relationships>WIPO_PUB_2015_001</document-legal-relationships>
    <document-legal-relationships-references>WIPO_PUB_2015_001</document-legal-relationships-references>
    <document-legal-relationships-references-references>WIPO_PUB_2015_001</document-legal-relationships-references-references>
    <document-legal-relationships-references-references-references>WIPO_PUB_2015_001</document-legal-relationships-references-references-references>
    <document-legal-relationships-references-references-references-references>WIPO_PUB_2015_001</document-legal-relationships-references-references-references-references>
    <document-legal-relationships-references-references-references-references-references>WIPO_PUB_2015_001</document-legal-relationships-references-references-references-references-references>
    <document-legal-relationships-references-references-references-references-references-references>WIPO_PUB_2015_001</document-legal-relationships-references-references-references-references-references-references>
  </record>
</search-results>

```

WIPO PUBLISH Rest Services

# USE IN REGIONAL MODE

OFFICE A Staff



OFFICE B Staff



OFFICE C Staff



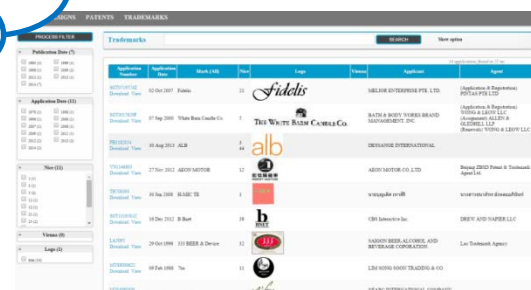
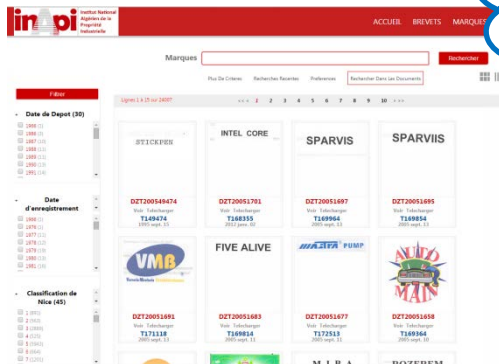
OFFICE D Staff



Publication on a regional server for offices A, B, C and D




WIPO Publish



# DATA EXTRACTION 1/2



WIPO IPAS

 DZ\_Patents\_WIPO\_0\_50\_20140710042736.zip

- Receive zip files from IPAS+
- Unzip application list
- Unzip individual application
- Parse content and documents
- Build index
- Store application data and documents

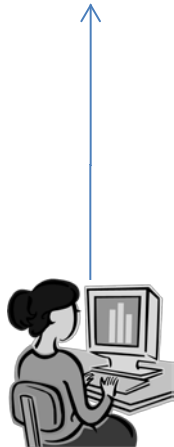


OFFICE Examiners

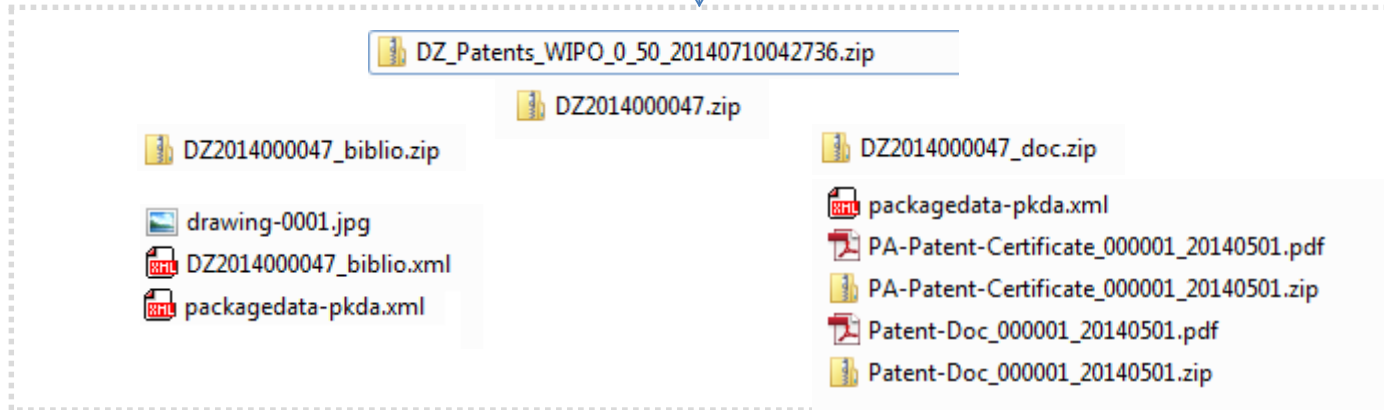
# DATA EXTRACTION 2/2



WIPO IPAS



OFFICE  
Examiners



Store Application data and documents

Build search indexes



# DATA FORMAT

## ■ PATENTS

- ST.36 XML

- Drawings

- Documents (Specs, Search Reports, Exam Reports ..)



## ■ TRADEMARKS

- ST.66 XML

- Logo

## ■ DESIGNS

- ST.86 XML

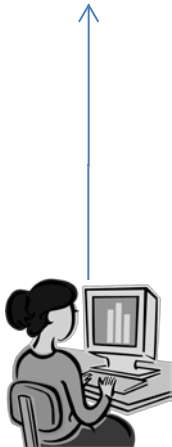
- Drawings



# DATA EXTRACTION with database connectors



WIPO IPAS



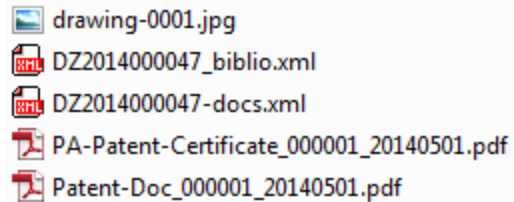
OFFICE  
Examiners

Customize database queries to extract application data, logos and drawings only

(excluding documents)

Oracle, MSSQL Server, MaxDB, MySQL

Build index to allow search

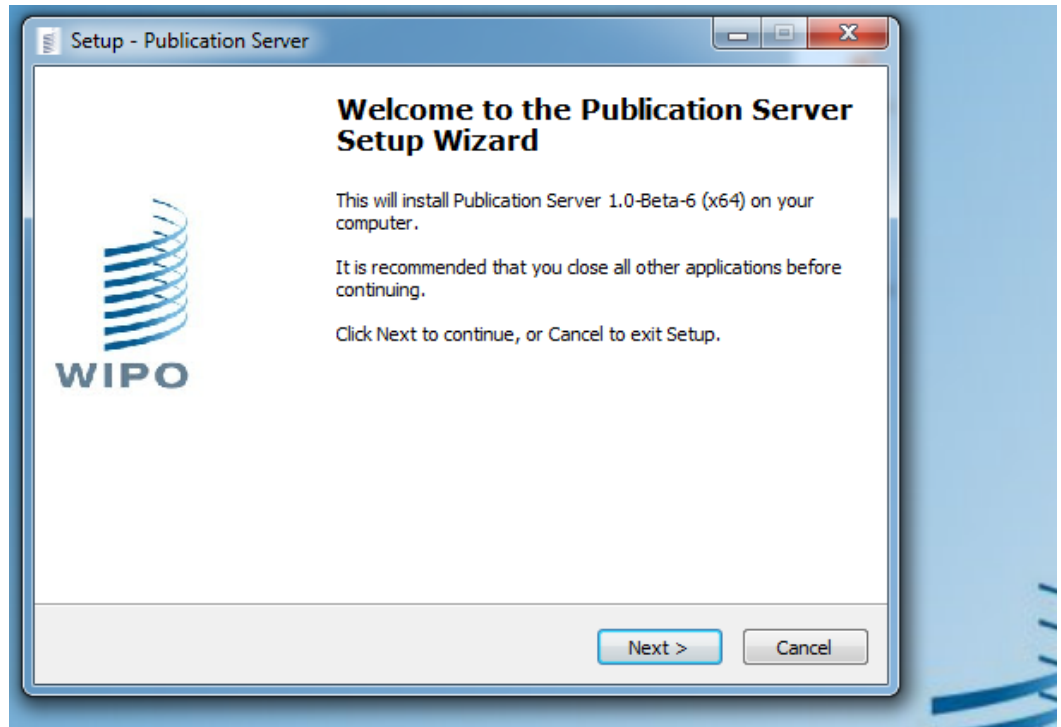


```
<doc>  
<arr name="DCCT">  
<str>P</str>  
</arr>  
<arr name="ICTA">  
<str>P</str>  
<arr name="PCUB">  
<str>P</str>  
<arr name="SPM_ORIGINAL">  
<str>P</str>  
<arr name="SCT">  
<str>P</str>  
<arr name="SCT">  
<str>P</str>  
<arr name="SCT">  
<str>P</str>  
</doc>
```



# INSTALLATION

- Windows (installers)
  - .exe 64 bits
  - .exe 32 bits
- Unix (manual)
  - Tar



# CONFIGURATION

## ■ XML-based Configuration

- Local/Regional

- Patents specific

- Trademarks specific

- Designs specific

## ■ Optional Security

- Restricted IP addresses

- client digital certificate

- SSL/HTTPS support using apache as a reverse proxy

```
<!--
Values for argument type :
- Type LOCAL : Local Publication Server index business data and contain business file.
- Type REGIONAL : Regional Publication Server receive index business data from LOCAL to
index and does not contain any business file.

Values for id type :
id of your installation (example server.local.OFFICE_CODE).
!! Please ensure that argument id is correctly set (id is used by Regional/Local Setup

Values for argument resolve =
- "host" -> automatic resolve with host name ,
- "ip" -> automatic resolve with ip,
- "127.0.0.1", "localhost", or the choosen hostname

-->
<PublicationServer type="REGIONAL" id="server.local.YY"
runningMode="PRODUCTION" version="1.0.0-Beta-6-20141010" displayName="Publication Server"
resolve="host">
```

# CUSTOMIZATION

- How to change the look and feel (CSS)
- How to disable/enable a module
- How to change the labels (localization)
- How to modify the default facets
- How to modify the number of elements displayed per page in each view (grid, list, detail, table)
- How to map the status codes to localized labels
- How to change the default "No logo" image
- How to change the number of logos displayed in Grid View
- How to configure the default advanced search fields

# DASHBOARD

- Overview of the server configuration and status
- Access to system logs

The screenshot displays the 'WIPO PUBLISH ADMINISTRATION WR-1.0.2' interface. The top navigation bar includes links for 'References', 'Documents Repository', 'Designs', 'Trademarks', 'Patents', and 'Administration'. A secondary menu below it contains 'Dashboard', 'Indexation', 'Schedulers', 'Administration', 'Upload', 'Reports', and 'About'. The main content area is divided into three sections: 'TRADEMARKS', 'SOLR', and 'DATABASES'. The 'TRADEMARKS' section lists configuration details such as the module name, active status, endpoint URL, home folder, and indexed counts. The 'SOLR' section shows the default Solr URL with a green status indicator. The 'DATABASES' section provides connection details for indexing trademarks data, including a red status indicator and the JDBC connection string.

TRADEMARKS	
Module	trademarks
Active	true
Endpoint URL	<a href="http://10.132.133.28:9091/wopublish/trademarks/get">http://10.132.133.28:9091/wopublish/trademarks/get</a>
Home Folder	D:\WIPOPublish\conf\modules\trademarks
Number of indexed applications	1 application
Number of indexed documents	0 documents

SOLR	
Default Solr URL	<a href="http://10.132.133.28:9091/wopublish-solr/core-trademarks">http://10.132.133.28:9091/wopublish-solr/core-trademarks</a>

DATABASES	
Database connection details are used to run a batch program to index trademarks data with backward and forwards date ranges	
ipas-trademarks (User=\$USER) (driver=oracle.jdbc.driver.OracleDriver)	<a href="jdbc:oracle:thin:@SHOST:SPORT/SDBNAME">jdbc:oracle:thin:@SHOST:SPORT/SDBNAME</a>

# SEARCH CONFIGURATION

- Configure default input fields
- Enable and customize your facets
- Enable/Disable highlights
- Advanced search

The screenshot displays the WIPO PUBLISH search interface. At the top, there is a navigation bar with the WIPO logo and the text "WIPO PUBLISH" and "WORLD INTELLECTUAL PROPERTY ORGANIZATION". Below this, there are tabs for "Trademarks", "References", "Patents", "EDMS", and "Designs". The "SEARCH" tab is active, and the "ADVANCED SEARCH" sub-tab is selected. A search input field contains the text "Enter Keyword(s)" and a "Search" button. Below the search bar, there is a table with the following columns: MARK DESCRIPTION, FILING #, FILING DATE, REG. #, REG. DATE, PUB. DATE, APPLICANT, NICE CLASSES, and STATUS. The table contains one row with the following data: MARK DESCRIPTION: COMBIPLEX COMPLEX, FILING #: IDD002004019400, FILING DATE: 2004.07.09, REG. #: IDMD00084464, REG. DATE: 2006.08.16, PUB. DATE: 2014.10.10, APPLICANT: PT SAMPLE PHARMA GROUP, NICE CLASSES: 5 44, and STATUS: Application expired. To the left of the table, there is a sidebar titled "Apply Filter" with a close button (X). The sidebar contains several filter categories: Filing Date (1), Reg. Date (1), Pub. Date (1), Nice Classes (2), Vienna Classes (2), Logo (0), and Status (1). Each category has a list of options with checkboxes and counts. For example, under Filing Date, there is an option for 2004 (1). Under Reg. Date, there is an option for 2006 (1). Under Pub. Date, there is an option for 2014 (1). Under Nice Classes, there are options for 5 (1) and 44 (1). Under Vienna Classes, there are options for 10.01.02 (1) and 14.21.02 (1). Under Status, there is an option for Application expired (1). At the bottom right of the page, there is the WIPO logo and the text "WIPO WORLD INTELLECTUAL PROPERTY ORGANIZATION" and "powered by WIPO".

WIPO PUBLISH  
WORLD INTELLECTUAL PROPERTY ORGANIZATION

Trademarks References Patents EDMS Designs

SEARCH ADVANCED SEARCH

Enter Keyword(s) Search

Apply Filter X

Showing 1 to 1 of 1

MARK DESCRIPTION	FILING #	FILING DATE	REG. #	REG. DATE	PUB. DATE	APPLICANT	NICE CLASSES	STATUS
COMBIPLEX COMPLEX	IDD002004019400	2004.07.09	IDMD00084464	2006.08.16	2014.10.10	PT SAMPLE PHARMA GROUP	5 44	Application expired

Showing 1 to 1 of 1

WIPO  
WORLD INTELLECTUAL PROPERTY ORGANIZATION

powered by WIPO

# SERVICES AND WIPOCASE

## ■ Simple search

- Retrieve list of application numbers
- Bibliographic data in WIPO Standards XML format
- Application documents in original format as provided

## ■ WIPO CASE

- biblio
- doclist
- doccontent
- List of application family data

# DEFAULT & OFFICE SPECIFIC CSS

**WIPO PUBLISH**

Trademarks References Patents **EDMS** Designs

SEARCH ADVANCED SEARCH

Enter Keyword(s) Search

Showing 0 to 0 of 0 ⏪ ⏩ ⏴ ⏵

FILE	FILE_ID	DOCUMENT ID	DOC_REF	LEGAL DATE	EDOC_REF	EFOLDER_REF	STATUS
Showing 0 to 0 of 0 <span>⏪ ⏩ ⏴ ⏵</span>							

HOME DESIGNS PATENTS TRADEMARKS

**Patents** SEARCH

Showing 1 To 15 Of 130648

Application Number	Filing Date	Title (All)	IPC	Inventor	Applica
PI99002952 <a href="#">Download View</a>	14 Jul 1999	COPYRIGHT MANAGEMENT APPARATUS, COPYRIGHTED-WORK DISTRIBUTION APPARATUS, AND COPYRIGHTED-WORK DISTRIBUTION AND RECEIVING SYSTEM			
PI88001280 <a href="#">Download View</a>	09 Nov 1988	A METHOD FOR THE FORMING AND THE DEPOSITION IN A SELECTED PLACE OF A BULK	E02B 3/12 B63B 35/30		

powered by WIPO

**DJHKI**  
PENELURAN DATA PATEN INDONESIA

HOME DESIGNS PATENTS TRADEMAR

**Designs** SEARCH Show option

Showing 186 To 186 Of 185

Application Number	Application Date	Design	Locarno	Designer	Applicant	Agent	Description	Drawing
820014060323 <a href="#">Download View</a>	12 Feb 2014	BOTOL DENGAN BENTUK CACING	[9.1] Bottles, Flasks, Pots, Carboys, Demijohns, And Containers With Dynamic Dispensing Means.	Sara L. Delgado Carmona	DART INDUSTRIES INC.	Daru Lukiantono, SH	Desain Ini Adalah Untuk Diaplikasikan Pada Suatu Botol Yang Memiliki Bentuk Dan Konfigurasi Unik Berbentuk Cacing Untuk Digunakan Pada Rumah Tangga	69/14

185 applications found in 117 ms

**ASEAN Intellectual Property Portal**  
www.aseanip.org

HOME DESIGNS PATENTS TRADEMARKS

**Patents** SEARCH

Showing 1 To 15 Of 130648

Application Number	Filing Date	Title (All)	IPC	Inventor	Applicant	Agent
PI99002952 <a href="#">Download View</a>	14 Jul 1999	COPYRIGHT MANAGEMENT APPARATUS, COPYRIGHTED-WORK DISTRIBUTION APPARATUS, AND COPYRIGHTED-WORK DISTRIBUTION AND RECEIVING SYSTEM				HARIRAM JAYARAM
PI88001280 <a href="#">Download View</a>	09 Nov 1988	A METHOD FOR THE FORMING AND THE DEPOSITION IN A SELECTED PLACE OF A BULK	E02B 3/12 B63B 35/30			MARY CARM SYBLE LOUIS
PI88001275 <a href="#">Download View</a>	07 Nov 1988	ANTIBACTERIAL 9-DEOXO-9A-ALLYL AND PROPARGYL-9A-AZA-9A-HOMOERYTHROMYCIN A DERIVATIVES.	A51K 31/70 C07H 17/08			WONG SAI F
PI99002945 <a href="#">Download View</a>	13 Jul 1999	SYSTEM FOR DERIVING A DECODED REDUCED-RESOLUTION VIDEO SIGNAL FROM A CODED HIGH-DEFINITION VIDEO SIGNAL.	H04N 7/50 G06F 17/14 G06T 9/00, 3/40			PATRICK MIRANDA*
PI99002946 <a href="#">Download View</a>	13 Jul 1999	PELLETS HAVING A CORE COATED WITH AN	A61K 9/50			DATO' V.L.

# Possible use as EDMS

- Support simple Electronic Document Management System (EDMS) for WIPO Scan and WIPO IPAS
- No change in IPAS



WIPO PUBLISH

trademarks **edms**

SEARCH ADVANCED SEARCH

EDoc Date (yyyyMM) 201407 +/- Fields

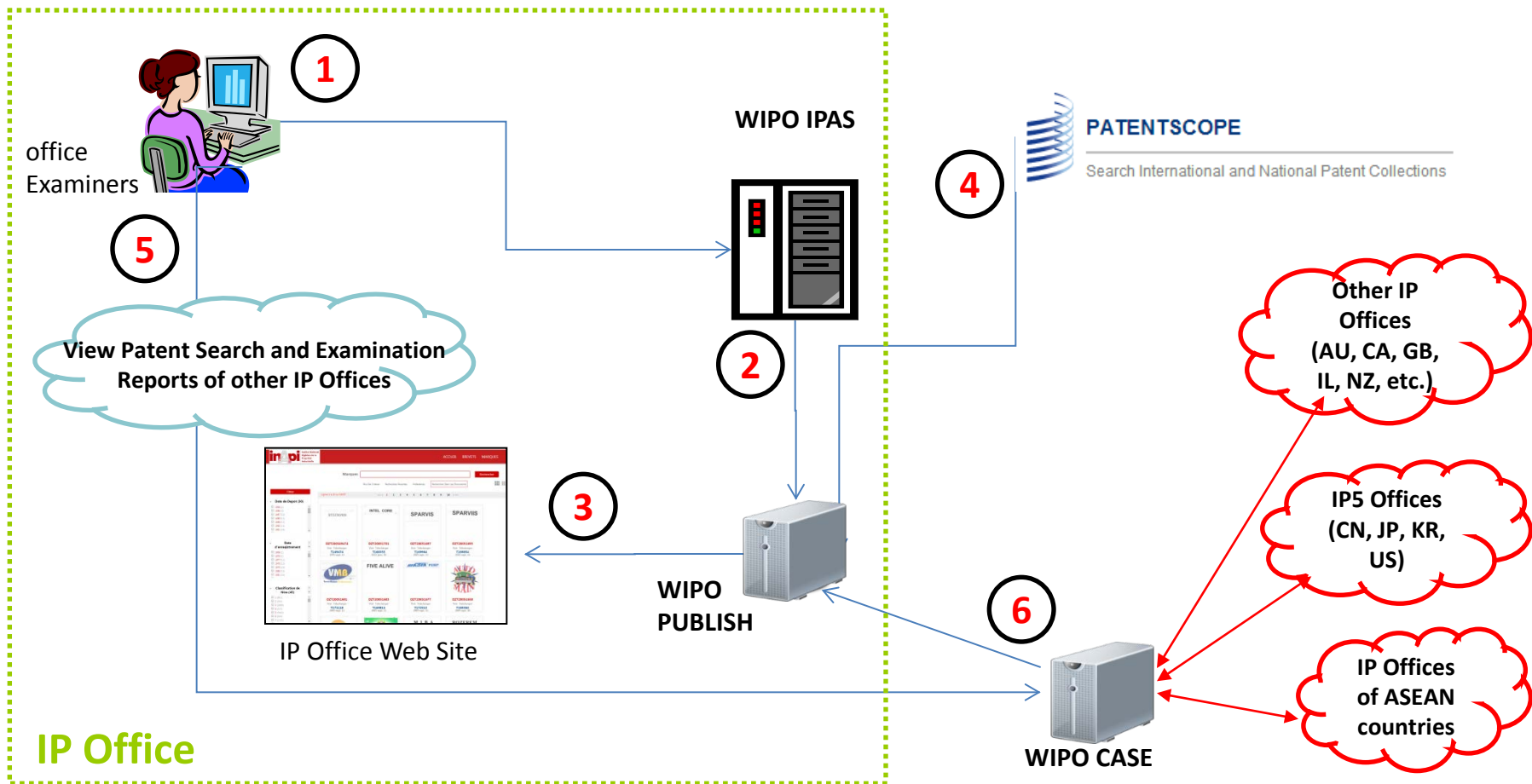
**Search**

Showing 1 to 15 of 370

FILE	FILE_ID	DOCUMENT ID	DOC_REF	LEGAL DATE	EDOC_REF	EFOLDER_REF	STATUS
	KH-T-2014-58387	KH-E-2014-123106	KH-FILE_T_2014-2014-58387	2014 Jul 03	2-2014-58387	2-2014-58387	RequireScanning
	KH-T-2004-20855	KH-E-2014-123105	KH-REN2014-2014-13782	2014 Jul 03	3-2014-123105	2-2004-20855	RequireScanning
	KH-T-2014-58385	KH-E-2014-123103	KH-FILE_T_2014-2014-58385	2014 Jul 03	2-2014-58385	2-2014-58385	RequireScanning
	KH-T-2014-58386	KH-E-2014-123104	KH-FILE_T_2014-2014-58386	2014 Jul 03	2-2014-58386	2-2014-58386	RequireScanning
	KH-T-2008-29954	KH-E-2014-123186	KH-AFF2014-2014-13417	2014 Jul 03	3-2014-123186	2-2008-29954	RequireScanning
	KH-T-2014-58425	KH-E-2014-123162	KH-FILE_T_2014-2014-58425	2014 Jul 03	2-2014-58425	2-2014-58425	RequireScanning



# Interface with WIPO Centralized Access Search and Examination (CASE) System



# Future Enhancement

- Support ST.96
- Offer search facilities to assist classification work
- Make use of WIPO Publish to enhance IPAS search features to facilitate preparation of search reports

