



Sub-Regional Workshop on the Development and Effective Use of Intellectual Property Statistics for ARIPO Member States

WIPO's Cooperation Development Activities in Africa

Harare, Zimbabwe
Sept. 14, 2016

Joyce C. Banya
Senior Counsellor, Regional Bureau for Africa



WIPO

**The Development
Sector**

Africa Bureau

The Activities

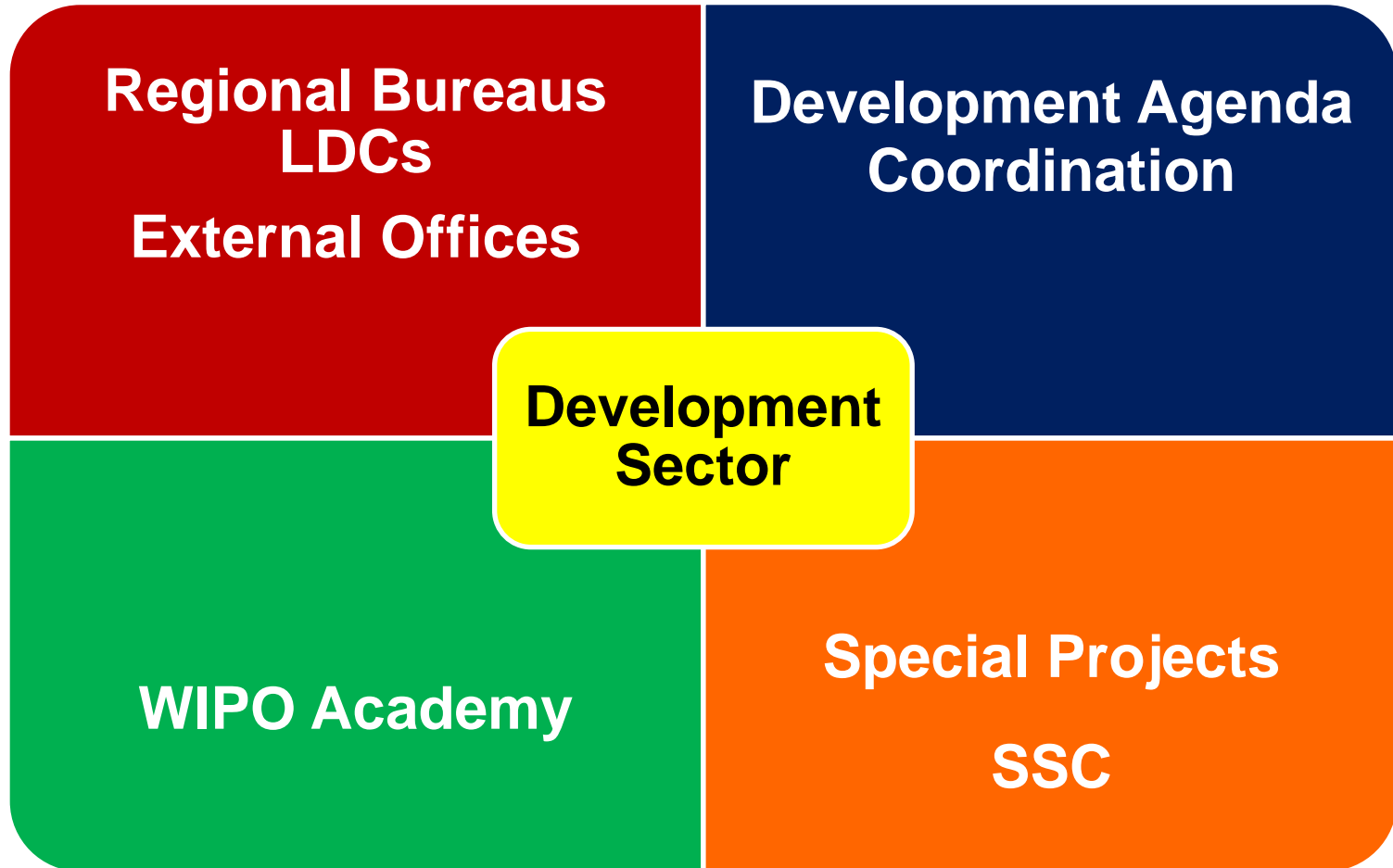




Who we are

- International intergovernmental organization
- 188 member states
- 350 + accredited observers
- 1300 staff from 120 countries
- 26 treaties

Who are we?





Geneva HQ

New York

Brazil

Russia

China

Japan

Singapore

Where we are

REGIONAL BUREAU FOR AFRICA

(Strategic Goal III- Facilitating the Use of IP for Development)

- To Promote the use of the IP system for economic , social , cultural scientific and technological transformation of African countries
- Coordinating Role with the substantive sectors in providing, TA, skills development , capacity building building, human resource development programs for developing and least developed countries

Four pillar of action



NIPS



Legal

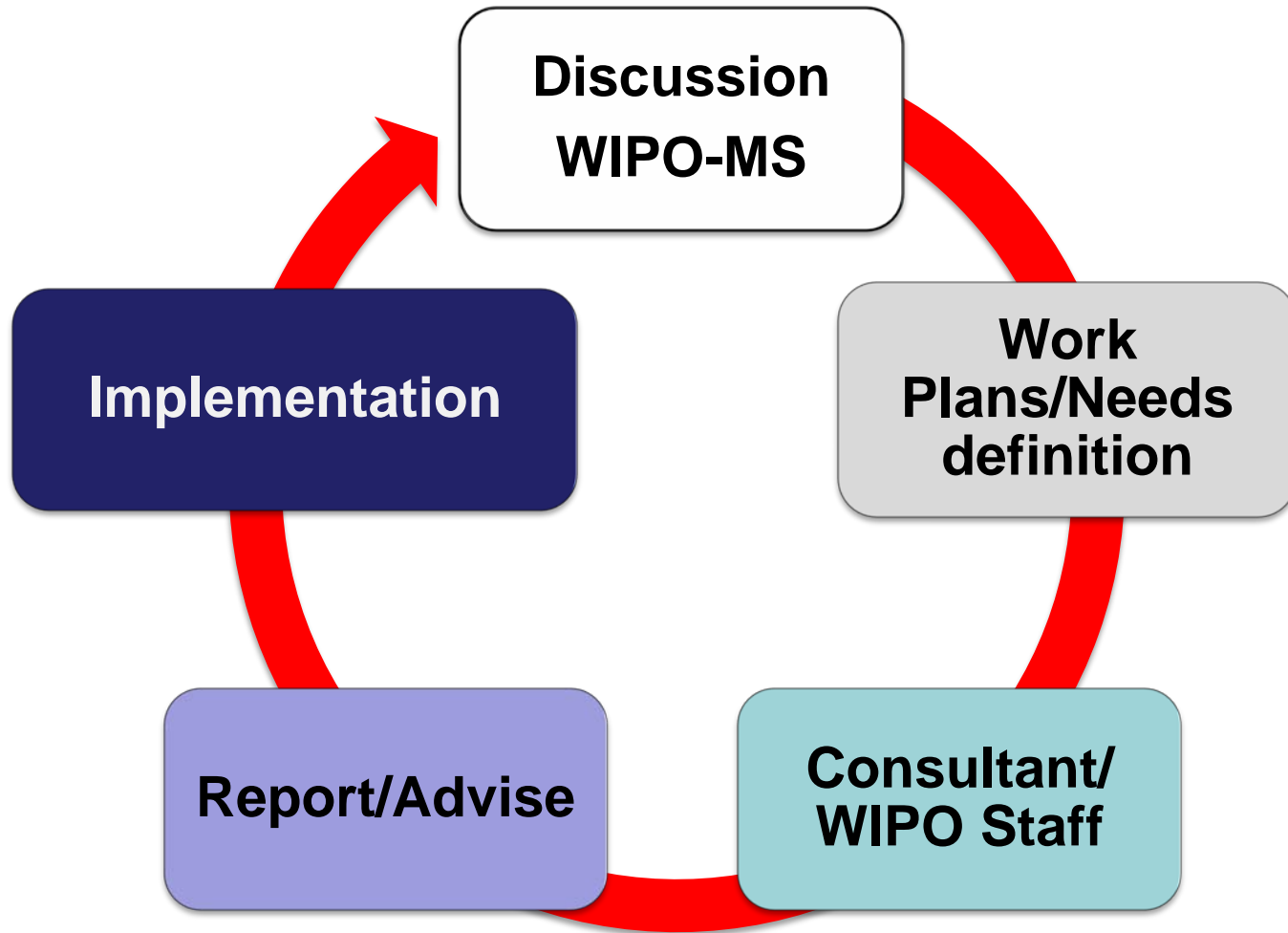


Infrastructure



**Capacity
Building**

Methodology



MANDATE



STATUS OF IP STRATEGIES

Formulating/Completed

- Benin
- Central African Rep
- DR Congo
- Equatorial Guinea
- The Gambia
- Madagascar
- Malawi
- Namibia

- Niger
- Sierra Leone
- Swaziland
- Uganda

STATUS (cont'd)

IMPLEMENTING

- Botswana
- Cameroon
- Comoros
- Cote d'Ivoire
- Ghana
- Liberia
- Mozambique
- Mauritius
- Seychelles

[17 Countries]

- Rwanda
- Senegal
- UR Tanzania
- Zambia
- Zimbabwe
- Ethiopia
- Kenya
- Lesotho

Global IP Infrastructure

~ for an efficient & accessible IP system that benefits all ~

■ Activities include:

- Technical assistance for modernizing IP offices;
- Capacity building & networking by Technology Innovation Support Centers (TISCs)
- Common platform for e-data exchange among IPOs
- Tools (international classifications in TMs/design (IPC, Green inventory, Nice classification)
- Standards & technical agreements
- Databases (PATENTSCOPE, Global Brand DB & access to aRDI and ASPI
- Services (International Cooperation for Patent Examination (ICE), Patent Information Services, including Legal Status of Patents)
- Forum for exchanging experience and lessons learned (Global Symposium of IP Authorities)



WORLD IPAS DEPLOYMENTS

SOURCE: WIPO

Up – coming projects

- **P Documents Digitization Project** -scan and index documents across all IP domains (patents, TM, ID, Utility models etc by ARIPO. Funded through Japan Funds-In-Trust (FIT)
- **Regional IP Database Project**- ongoing project whose aim is to create a regional portal for published IP data of ARIPO and its Member States. Web portal has already been created and ARIPO trademarks data loaded for testing.
- **ARIPO Member States Module**- successful pilot test between the ARIPO Secretariat and the Zimbabwe IPO

■ IP Office Website – Under FIT Japan

Enhancing of IPOs Capabilities for Transmitting Information

Access to Information and Knowledge Division

■ Background:

- Developing Countries (DCs) and LDCs challenge of accessing technological information included in patent documents and scientific literature

- Development Agenda Projects: Developing tools for facilitating access to patent information and decreasing the digital divide and the knowledge gap between developed and developing countries

■ Areas of work:

- Access to patent and scientific literature databases and search tools

- Capacity building on patent search

- Support of innovators in DCs through access to locally based technology information and on-site provision of related services

ASPI

ACCESS TO SPECIALIZED PATENT INFORMATION

■ Partnership with 6 patent database service providers



(Photo: LexisNexis).

TotalPatent

Search the largest online collection of enhanced first-level patent data. Summary

[PDF](#)



(Photo: Minesoft).

PatBase

One of the most relied-upon patent databases available, used daily by patent professionals around the world as their primary search tool. Summary

[PDF](#)



(Photo: Questel).

Orbit.com

Portal for patent, design, and legal professionals looking for a comprehensive coverage and powerful tools. Summary.



(Photo: Thomson Reuters).

Thomson Innovation

The world's most comprehensive IP research and analysis platform. Summary

[PDF](#)



(Photo: WIPS Global).

WIPS Global

Worldwide patent information online service. Summary

[PDF](#)



(Photo: Gridlogics).

PatSeer

Redefining Patent Research, Analysis, Project Management & Collaboration.

Summary [PDF](#)

www.wipo.int/aspi

WORLD
INTELLECTUAL PROPERTY
ORGANIZATION

ASPI - Eligibility

Group 1 (48)

Least developed countries, as defined by the United Nations

Patent offices as well as academic and research institutions can receive access to all products at no cost. A maximum of one account can be obtained for each patent database service selected.

Afghanistan

Angola

Bangladesh

Benin

Bhutan

Burkina Faso

Burundi

Cambodia

Central African Republic

Chad

Comoros

Democratic Republic of the Congo

Djibouti

Equatorial Guinea

Eritrea

Ethiopia

Gambia

Guinea

Guinea-Bissau

Haiti

Kiribati

Lao People's Democratic Republic

Lesotho

Group 2 (45)

Selected middle income countries, as defined by the World Bank

Patent offices as well as academic and research institutions receive access at a nominal cost of 1000 Swiss francs for each account per calendar year (from January through December). A maximum of three accounts can be obtained for each patent database service selected (one account only during the free trial period).

Albania

Armenia

Azerbaijan

Belarus

Bolivia (Plurinational State of)

Cameroon

Cape Verde

Colombia

Congo

Côte d'Ivoire

Dominican Republic

El Salvador

Fiji

Georgia

Ghana

Guatemala

Guyana

Honduras

Jamaica

Kazakhstan

Kenya

Kosovo

Group 3 (22)

Other selected countries

Patent offices only receive access at a nominal cost of 3000 Swiss francs for each account per calendar year (from January through December). A maximum of three accounts can be obtained for each patent database service selected.

American Samoa

Antigua and Barbuda

Bahrain

Barbados

Belize

Botswana

Costa Rica

Dominica

Gabon

Grenada

Libya

Lithuania

Mauritius

Mayotte

Oman

Palau

Panama

Romania

Seychelles

Saint Kitts and Nevis

Saint Lucia

Trinidad and Tobago

- Free or low-cost access to scientific and technical content for 116 least developed and developing countries
- Partnership with 17 major publishers
- Over 6,000 journals
- Over 19,000 books and reference works

Programs

ARDI
Research for Innovation



World Intellectual Property Organization

HINARI
Research in Health



World Health Organization

AGORA
Research in Agriculture



Food and Agriculture Organization of the United Nations

OARE
Research in the Environment



United Nations Environment Programme

ARDI - Eligibility

Eligible countries

Group A (free access) ¹

- Afghanistan
- Angola
- Bangladesh
- Benin
- Bhutan
- Burkina Faso
- Burundi
- Cambodia
- Cameroon
- Cape Verde
- Central African Republic
- Chad
- Comoros
- Congo
- Côte d'Ivoire
- Democratic People's Republic of Korea
- Democratic Republic of the Congo
- Djibouti
- Equatorial Guinea
- Eritrea
- Ethiopia
- Gambia
- Ghana
- Guatemala
- Guinea
- Guinea-Bissau
- Haiti
- Honduras
- Iraq
- Kenya
- Kiribati
- Kyrgyzstan
- Lao People's Democratic Republic
- Lesotho
- Liberia
- Madagascar
- Malawi
- Mali
- Mauritania
- Morocco
- Mozambique
- Myanmar
- Namibia
- Nepal
- Nicaragua
- Niger
- Nigeria
- Papua New Guinea
- Rwanda
- Samoa
- São Tomé and Príncipe
- Senegal
- Sierra Leone
- Solomon Islands
- Somalia
- South Sudan
- Sudan
- Swaziland
- Tajikistan
- Timor-Leste
- Togo
- Tokelau
- Tuvalu
- Uganda
- United Republic of Tanzania
- Uzbekistan
- Vanuatu
- Viet Nam
- Yemen
- Zambia
- Zimbabwe

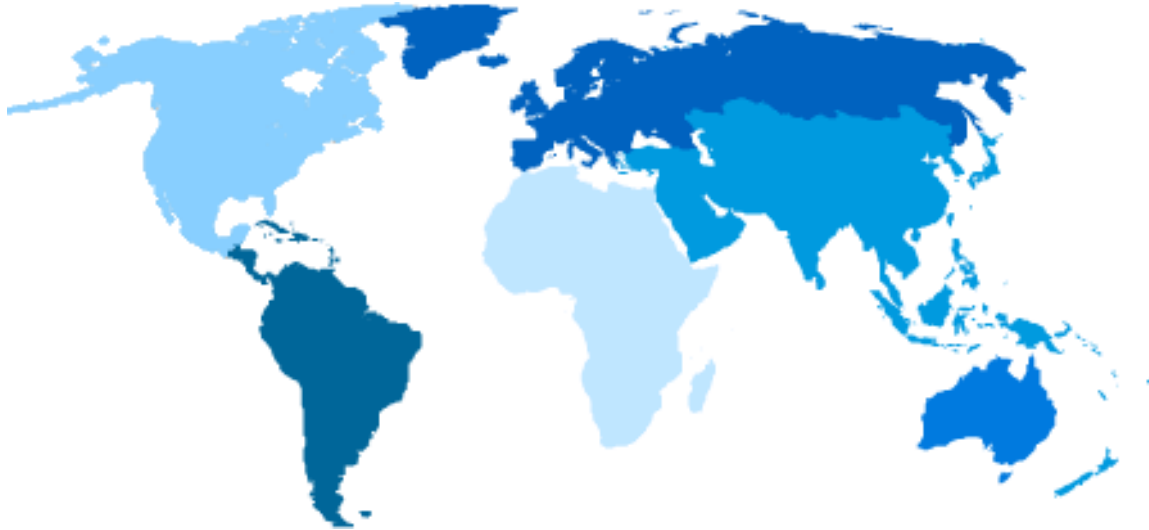
Group B (low cost access)

- Albania
- Algeria
- Argentina
- Armenia
- Belize
- Bolivia (Plurinational State of)
- Bosnia and Herzegovina
- Botswana
- Cook Islands
- Dominica
- Ecuador
- El Salvador
- Fiji
- Gabon
- Georgia
- Grenada
- Guyana
- Jamaica
- Jordan
- Kosovo
- Libya
- Maldives
- Marshall Islands
- Mauritius
- Micronesia (Federated States of)
- Mongolia
- Montenegro
- Nauru
- Niue
- Palau
- Paraguay
- Republic of Moldova
- Saint Helena
- Saint Kitts and Nevis
- Saint Lucia
- Saint Vincent and the Grenadines
- Seychelles
- Sri Lanka
- Suriname
- Syrian Arab Republic
- The Former Yugoslav Republic of Macedonia
- Tonga
- Tunisia
- Turkmenistan
- Ukraine
- West Bank and Gaza Strip

Use of ARDI and ASPI in Africa

- LDCs and a number of DCs: access free of charge
- Main and most active ARDI and ASPI users: universities
- More than 60% of the registered institutions for ARDI are based in Africa
- Rather low use of ARDI and ASPI potential
- Major uptake of ARDI: English-speaking countries
 - Need for further awareness raising and promotion
 - Language of journals
 - Importance of local stakeholders in promotion and use of these tools to achieve their full potential

TISC Program: Current status



- Started as a Development Agenda Project in 2009
- 50 national projects launched
- Over 420 centers opened worldwide
- Over 400'000 innovator inquiries supported annually

Data current as of February 2016

National projects launched

- Algeria
- Bangladesh
- **Benin**
- **Burundi**
- Cambodia
- **Cameroon**
- **Central African Republic**
- Colombia
- **Congo, Democratic Republic of**
- **Congo, Republic of**
- Costa Rica
- **Côte d'Ivoire**
- Cuba
- Dominican Republic
- Ecuador
- **Egypt**
- El Salvador
- **Ethiopia**
- Georgia
- Guatemala
- Honduras
- **Kenya**
- Kyrgyzstan
- **Madagascar**
- Malaysia
- **Mali**
- Mongolia
- Morocco
- **Mozambique**
- Nicaragua
- **Niger**
- **Nigeria**
- Oman
- Panama
- Philippines
- Russian Federation
- **Rwanda**
- **Sao Tomé and Príncipe**
- Saudi Arabia
- **Senegal**
- **South Africa**
- Sri Lanka
- **Tanzania**
- **Togo**
- Tunisia
- **Uganda**
- Uruguay
- Viet Nam
- **Zambia**
- **Zimbabwe**

Technology and Innovation Support Centers (TISC) - Services



Ibidunni Annette Roberts has used the services of the WIPO-backed TISC in Abuja, Nigeria, to develop and market her new beauty products. (Photo: Gbemiga Olamikan)

- Core services:
 - Access to patent and non-patent databases
 - Assistance in using databases
- Additional services (based on user need and office capacity):
 - Technology search services
 - Patent analytical services
 - Awareness-raising and training services



Conclusion



WIPO' s technical assistance programs are demand- driven

TA shall be delivered within the context of the NIPS based on the countries development plans based on their needs and priorities

TA shall be project based with concrete, time bound deliverables

TA to building IP infrastructure to connect systems & share knowledge



It's a partnership – (IGOs, UN Agencies , MS , Japan Fit, France FIT etc)





Just as participation in physical economy requires access to roads, bridges, and vehicles to transport, goods, similar Infrastructure is needed to participate in the Knowledge economy. But here the highway is the Internet , bridges are interoperable **data standards** , and vehicles are computers and **databases**

Follow us

- Twitter: [@wipo](https://twitter.com/wipo)
- WIPO Magazine
www.wipo.int/wipo_magazine/en/
- WIPO Wire:
www.wipo.int/newsletters/en
- Press releases
www.wipo.int/pressroom/en/

