



**WIPO | HAGUE**

The International  
Design System

# 工業意匠の国際登録制度： ハーグ条約

平成**28**年度

知的財産権制度説明会（実務者向け）

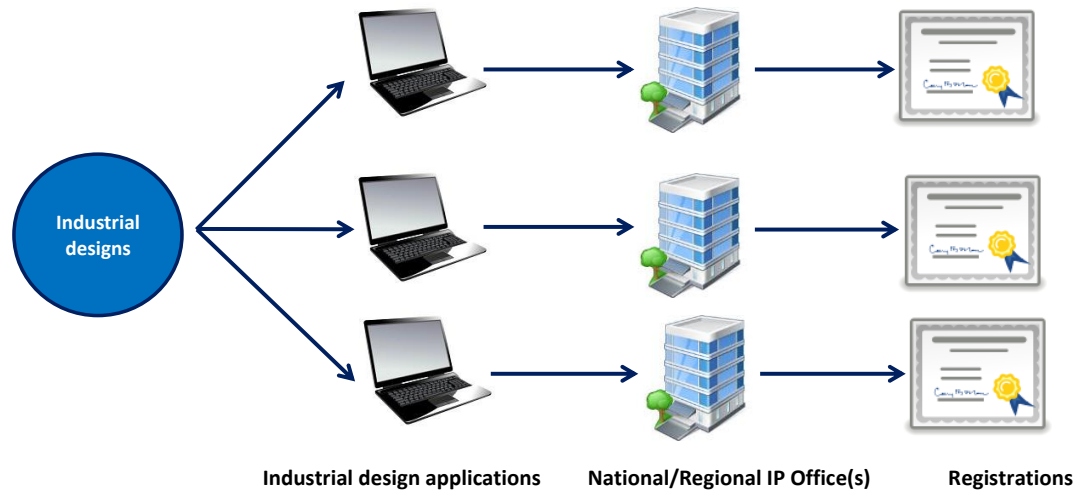
世界知的所有権機関 (WIPO)



# ハーグ制度の基本的な機能と利点

# パリルート vs. ハーグルート

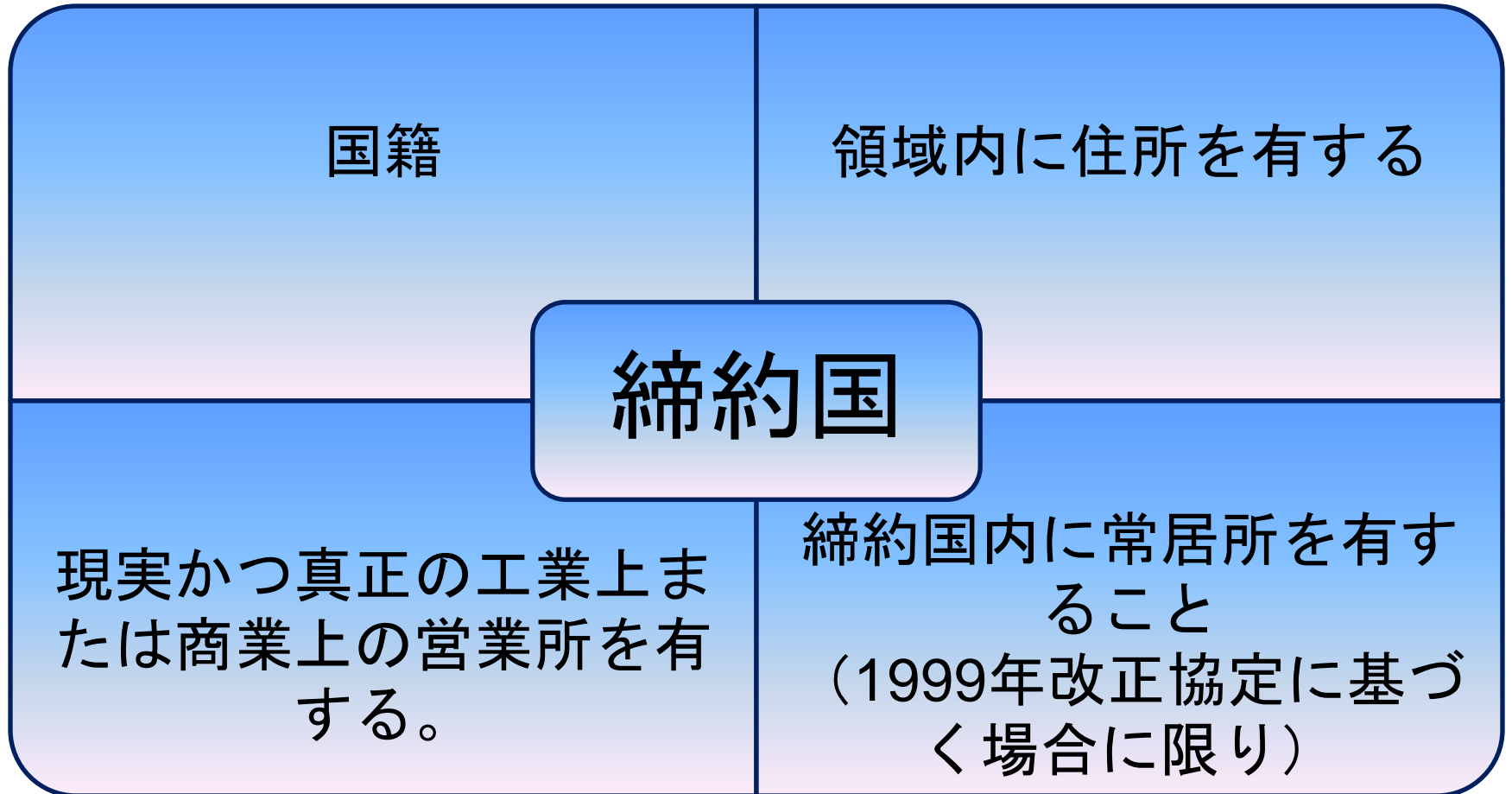
## パリルート



## ハーグ制度



# 誰がハーグ制度を利用できるか



# ハーグ制度の主な機能



## 手続きの簡素化

実際、この制度により、ある締約国の意匠所有者は、最小限の手続きによって自身の意匠に対する保護を得ることが可能になります。



## 費用効果

一つの通貨で一つの手数料



## 効率化

複数の締約国で効力を有する単一の国際登録を得ることによって、国際登録のその後の管理が大幅に簡素化されます。



## 柔軟性

所有者は対象国や対象地域、世界市場で更なる機会をもつことができます。

# ハーグ制度は何か

## 単一から複数へ

- 単一の国際出願を行うことによって、複数の国および／または政府間機関（締約国）において意匠の保護を得ることができる国際登録制度です。

## “権利の束”

- 所定の期間内に、指定締約国が拒絶を通報しなかった場合（または拒絶がその後、取り下げられた場合）、国際登録は、当該指定締約国において、当該指定締約国の法令に基づく意匠の保護の付与と同一の効果を有します。

# 国際出願

英語、フランス語、スペイン語

直接WIPOで電子出願制度あるいは用紙で

100件の異なる意匠を含めることができます。ただしすべての意匠が国際意匠分類（ロカルノ分類）の同一クラスに属する必要があります。

スイスフランで (in CHF) 一つの手数料

# ハーグ条約の手続き



保護条件の問題



意匠保護決定時の拒否手続きの適用



保護によって得られた権利

上記のような事項は、国際登録を行う指定締約国の法律に遵守する



# WIPO国際事務局の役割

方式審査

国際登録簿に記載する

登録書を権利人に送る

国際意匠広報に記載する

公報による公告による通知がなされる

WIPO国際事務局は、国際出願を受領した場合、意匠の複製物の品質や、要求される手数料の支払いに関する要件など、それが所定の形式の要件を満たしているかを確認します。瑕疵があれば出願人に伝達し、出願人は、3カ月間の所定の期限内にかかる瑕疵を修正しなければなりません。これを怠った場合には、当該国際出願は放棄されたものとみなされます。

# ハーグ制度基本的な利点



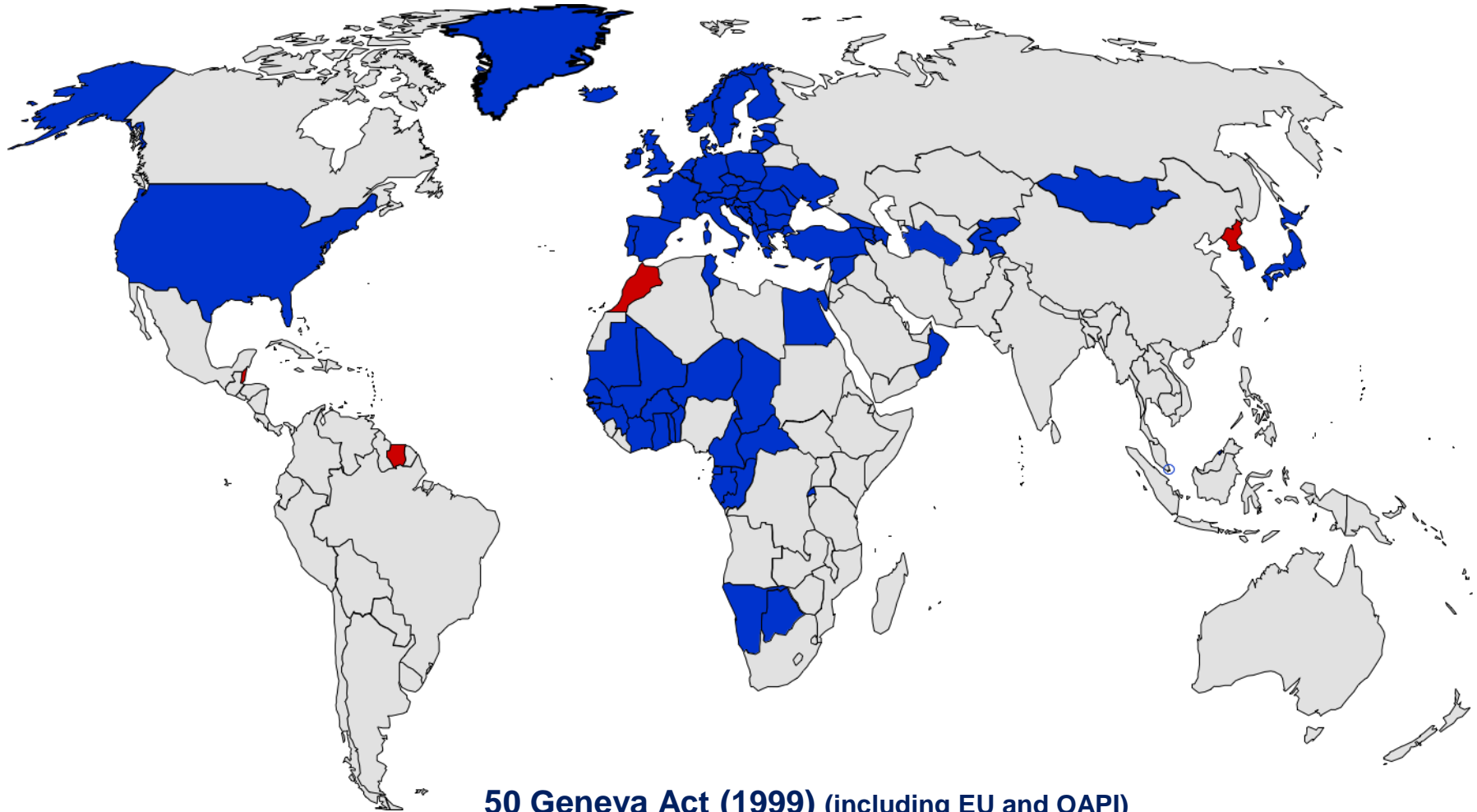
## ハーグ制度

一つの 官庁言語  
一つの 通貨  
一つの 国際登録  
一つの 更新  
一つの 修正  
外国代理人  
(拒絶された時)

## パリルート

多くの 官庁  
多くの 言語  
多くの 通貨  
多くの 登録  
多くの 更新  
多くの 修正  
外国代理人  
(出願する時)

# ハーグ制度加盟国



**50 Geneva Act (1999) (including EU and OAPI)**

**15 Hague Act (1960)**

---

**65 Contracting Parties**

**WIPO | HAGUE**  
The International  
Design System

# ハーグ協定の締約国

## ジュネーブ協定 (1999)

•African Intellectual Property Organization, Albania, Armenia, Azerbaijan, Bosnia and Herzegovina, Botswana, Brunei Darussalam, Bulgaria, Croatia, Denmark, Egypt, Estonia, European Union, Finland, France, Georgia, Germany, Ghana, Hungary, Iceland, Japan, Kyrgyzstan, Latvia, Liechtenstein, Lithuania, Monaco, Mongolia, Montenegro, Namibia, Norway, Oman, Poland, Republic of Korea, Republic of Moldova, Romania, Rwanda, Sao Tome and Principe, Serbia, Singapore, Slovenia, Spain, Syrian Arab Republic, Switzerland, Tajikistan, Turkmenistan, the former Y.R. of Macedonia, Tunisia, Turkey, Ukraine and the United States of America

## ハーグ協定 (1960)

•Belgium, Belize, Benin, Côte d'Ivoire, D.P.R. of Korea, Gabon, Greece, Italy, Luxembourg, Mali, Morocco, Netherlands, Niger, Senegal and Suriname

# ジュネーブ協定(1999)

## 最新加盟国



United States of America  
(May 13, 2015)



Japan  
(May 13, 2015)



Republic of Korea  
(July 1, 2014)



Turkmenistan  
(December 16, 2015)

## 潜在加盟国



China



Russian Federation



Morocco



ASEAN countries



Israel



Belize

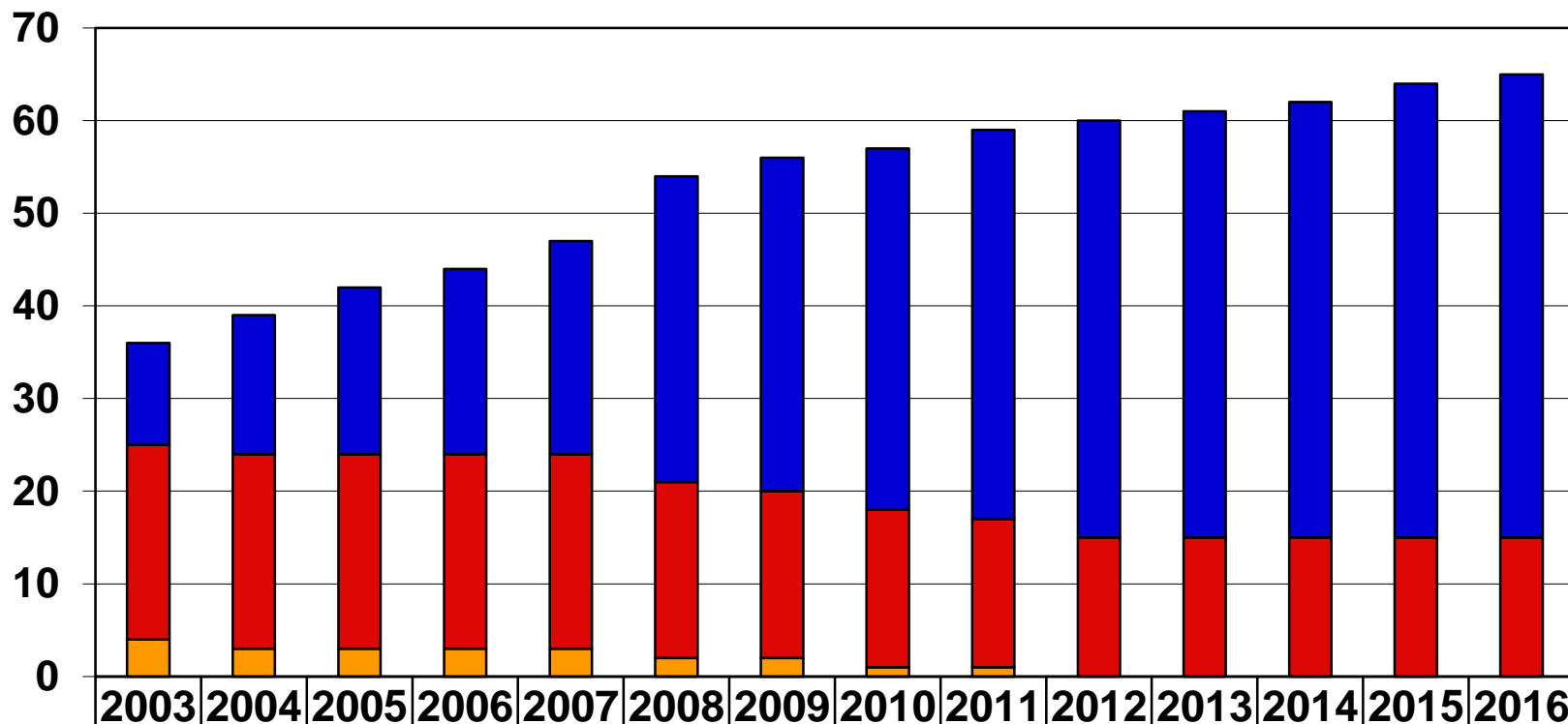


Mexico



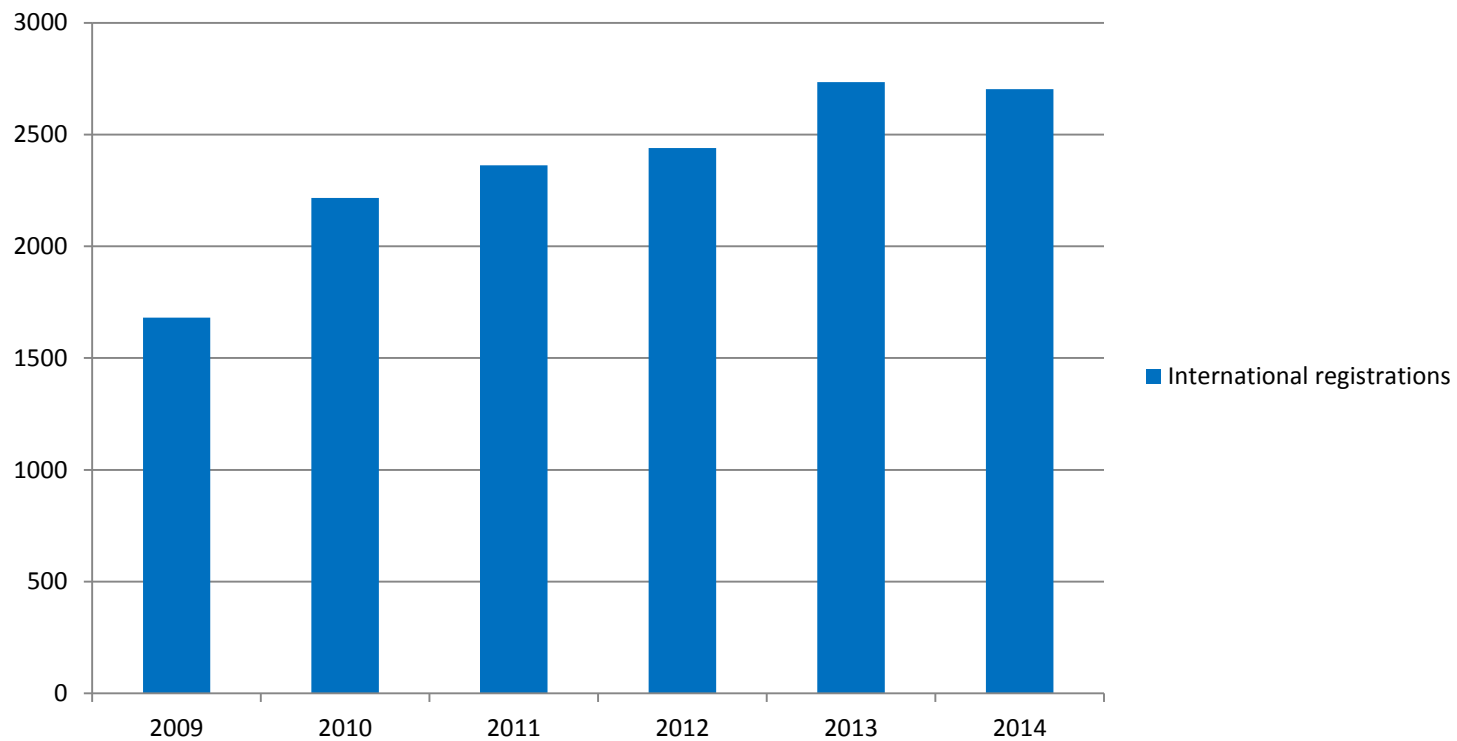
Madagascar

# ハーグ加盟国数 (2016年6月現在)



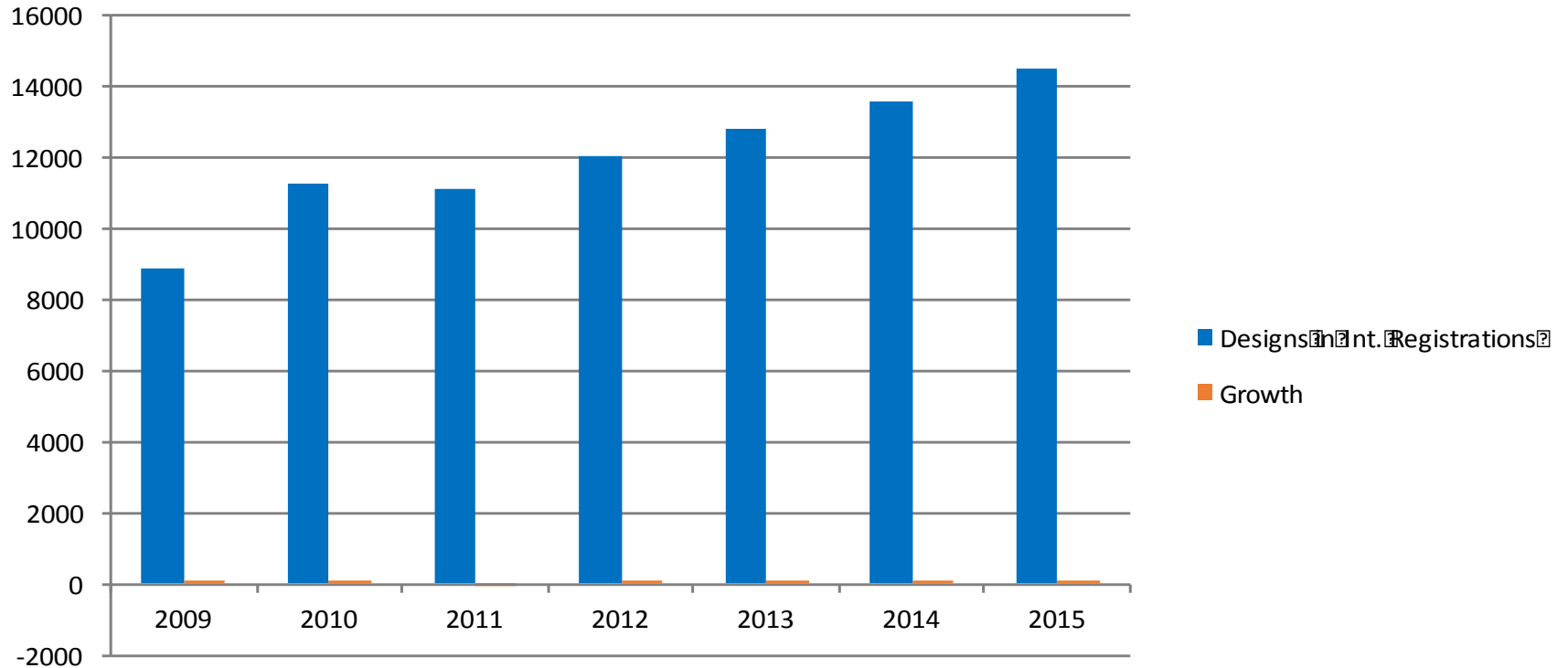
	2003	2004	2005	2006	2007	2008	2009	2010	2011	2012	2013	2014	2015	2016
■ 1999 Act	11	15	18	20	23	33	36	39	42	45	46	47	49	50
■ 1960 Act	21	21	21	21	21	19	18	17	16	15	15	15	15	15
■ 1934 Act	4	3	3	3	3	2	2	1	1	0	0	0	0	0

# 国際登録実績 (2009-2014)



Int. Registrations Recorded	1681	2216	2363	2440	2734	2703
Growth	10.3%	31.8%	6.6%	3.3%	12.0%	-1.1%

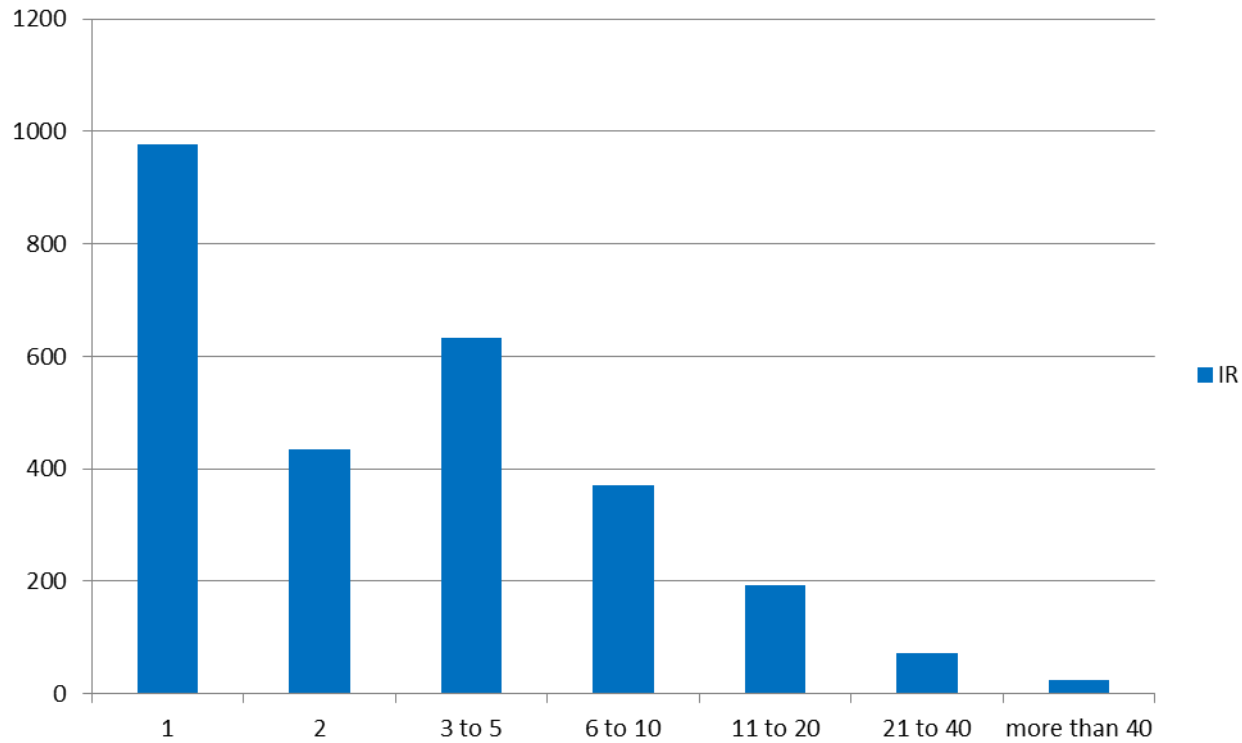
# 意匠の国際登録実績（2009-2015）



Designs in Int. Registrations	8867	11238	11077	11971	12806	13504
Growth	11.7%	26.7%	-1.4%	8.1%	7.0%	5.5%

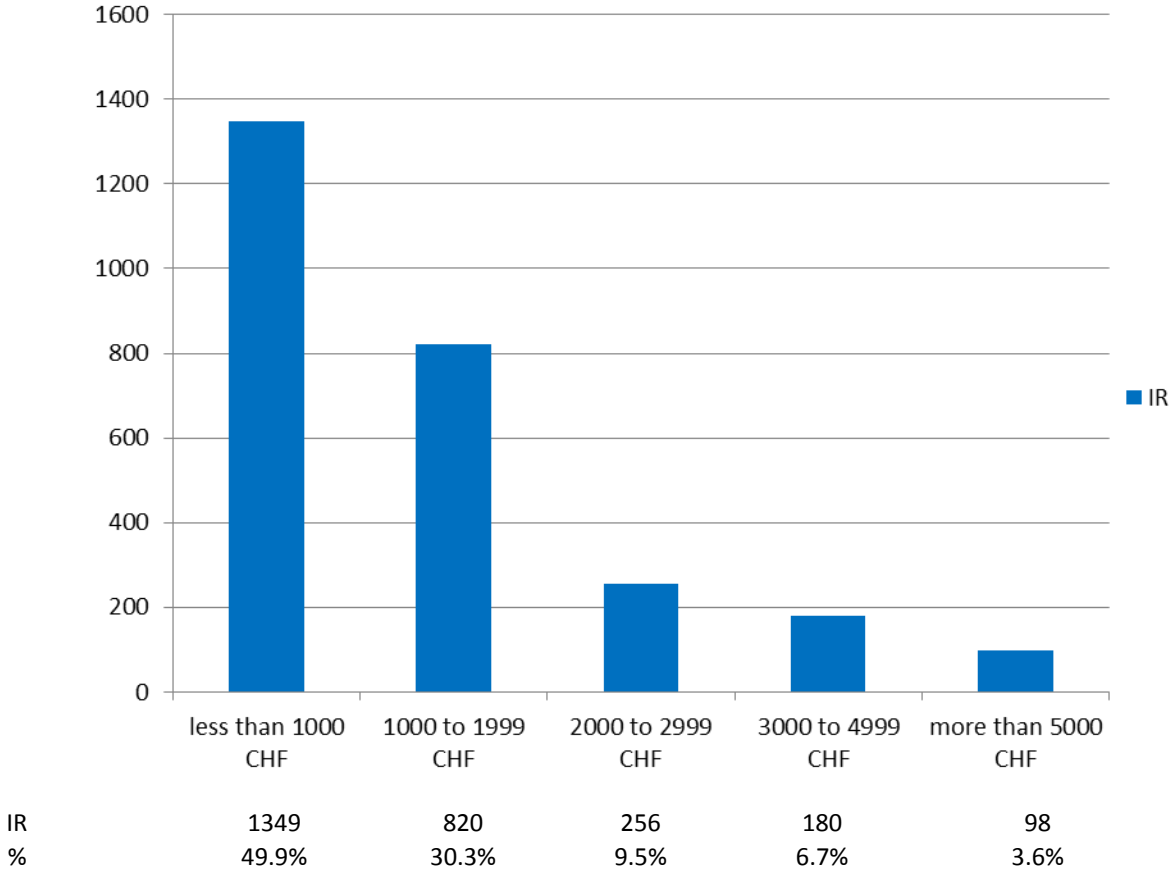


# 意匠の国際登録率 (2014)

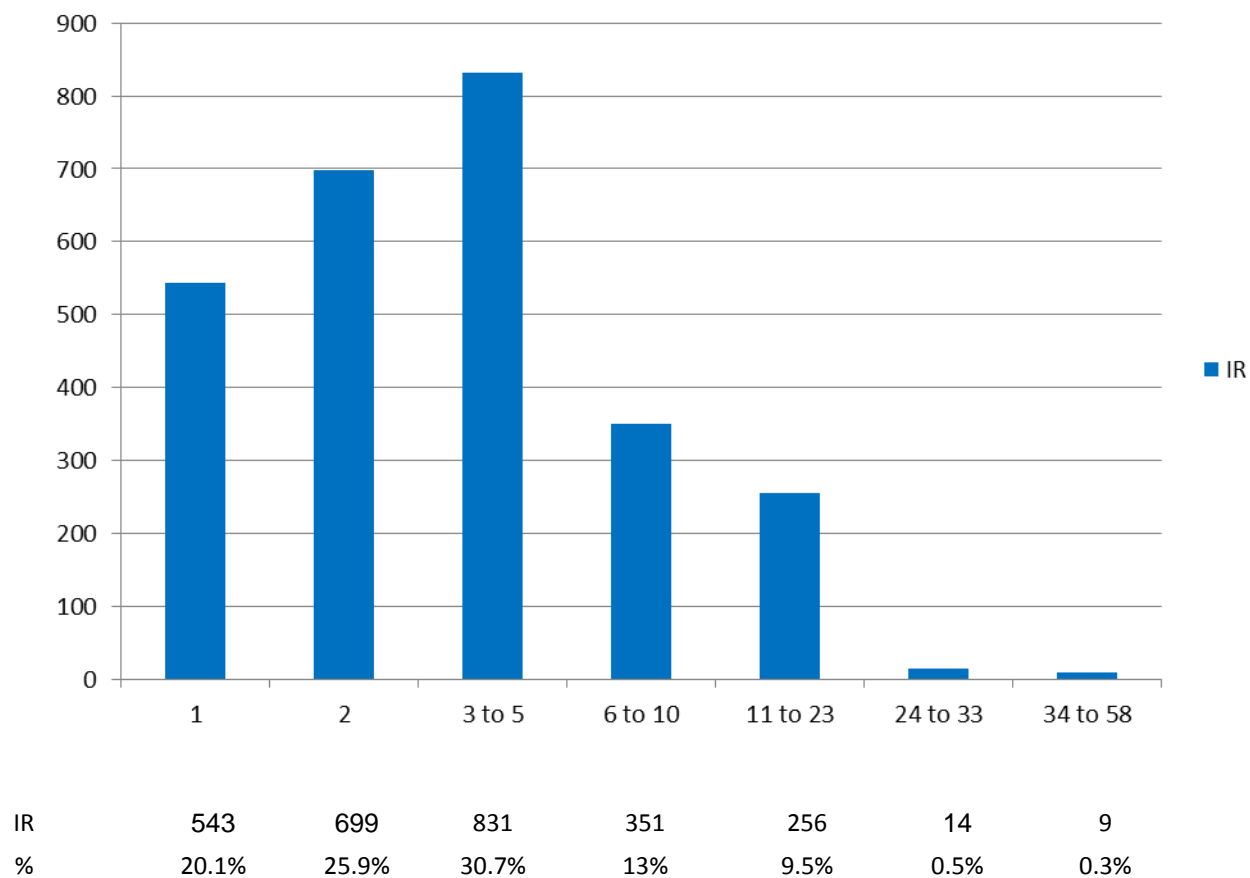


International Registrations	978	434	632	370	192	72	25
%	37%	16.5%	24%	14%	7%	1%	0.5%

# 国際登録における手数料（2014）



# 国際登録の指定国数（2014）



# 2014: 5の人気な分類



**Class 10**  
**Clocks and watches and other  
measuring instruments, checking  
and signaling instruments**  
**275 registrations (10.2%)**



**Class 9**  
**Packages and containers for the  
transport or handling of goods**  
**240 registrations (8.9%)**



**Class 12**  
**Means of transport or hoisting**  
**238 registrations (8.8%)**



**Class 6**  
**Furnishing**  
**232 registrations (8.6%)**



**Class 14**  
**Recording, communication or  
information retrieval equipment**  
**160 registrations (5.9%)**



# ハーグ制度のEサービス

## Hague – The International Design System

The Hague System for the International Registration of Industrial Designs provides a practical business solution for registering up to 100 designs in over 65 territories through filing one single international application.

Learn more:

- [What is an industrial design?](#)
- [Main features and advantages](#) [PDF](#)
- [Geographical coverage and legal framework](#)
- [FAQs](#)



[Read the case study.](#) (Photo: Jeff Harris/Artmix; RoundTAIL)

### News

[Accession to the 1999 Act: The Democratic People's Republic of Korea](#)  
September 13, 2016

[2016 Hague Yearly Review available](#)  
September 6, 2016

[All news](#)

### Key resources

[International Designs Bulletin](#)

[Fee Calculator](#)

[Forms](#)

[E-Filing Portfolio Manager](#)

[E-Renewal](#)

[▶ Show all resources](#)

## Key resources

[International Designs Bulletin](#)

[Fee Calculator](#)

[Forms](#)

[E-Filing Portfolio Manager](#)

[E-Renewal](#)

### Databases

[International Designs Bulletin](#)

[Global Design Database](#)

[Hague Express Database](#)

### Fees and payment

[Fee calculator](#)

[Fees and payment options](#)

[Schedule of fees](#)

[Individual designation fees](#)

### Statistics

[Annual statistics](#)

[Monthly statistics](#)

### Online services

[E-Filing Portfolio Manager](#)

[E-Renewal](#)

[E-Payment](#)

### Legal and procedural information

[Legal texts](#)

[Hague Guide for Users](#)

[Hague System E-Filing Tutorial](#)

[Information notices](#)

[National and regional procedures](#)

[Publications](#)

[▲ Hide resources](#)

## Key resources

[International Designs Bulletin](#)

[Fee Calculator](#)

[Forms](#)

[E-Filing Portfolio Manager](#)

[E-Renewal](#)

### Databases

[International Designs Bulletin](#)

[Global Design Database](#)

[Hague Express Database](#)

### Fees and payment

[Fee calculator](#)

[Fees and payment options](#)

[Schedule of fees](#)

[Individual designation fees](#)

### Statistics

[Annual statistics](#)

[Monthly statistics](#)

### Online services

[E-Filing Portfolio Manager](#)

[E-Renewal](#)

[E-Payment](#)

### Legal and procedural information

[Legal texts](#)

[Hague Guide for Users](#)

[Hague System E-Filing Tutorial](#)

[Information notices](#)

[National and regional procedures](#)

[Publications](#)

[▲ Hide resources](#)



## International Designs Bulletin

The Bulletin is the official publication of the Hague System. It contains data regarding new international registrations, renewals, and modifications affecting existing international registrations.

Publication Year  Bulletin No. - Publication date

Recording Type

Query

	<input type="text" value="Registration Number"/>	=	<input type="text"/>
AND	<input type="text" value="International Registration Date"/>	=	<input type="text"/>
AND	<input type="text" value="Priority Data"/>	=	<input type="text"/>
AND	<input type="text" value="Locarno Classification"/>	=	<input type="text"/>
AND	<input type="text" value="Indication of Products"/>	=	<input type="text"/>
AND	<input type="text" value="Holder"/>	=	<input type="text"/>
AND	<input type="text" value="Designated Contracting Parties"/>	=	<input type="text"/>

Search

### Shortcuts

[Help](#)

[Bulletin archives 2004-2011](#)

[Download XML Bulletin](#)

[Notes on Bulletin information](#)

[Country Codes \(ST.3\) PDF](#)

[INID Codes \(ST.8o\) PDF](#)

[Locarno classification](#)

# Hague Express

The Hague Express Database, updated weekly, includes bibliographical data and, as far as international registrations governed exclusively or partly by the 1999 and/or by the 1960 Act(s) of the Hague Agreement are concerned, reproductions of industrial designs relating to international registrations that have been recorded in the International Register and published in the International Designs Bulletin as of issue No. 1/1999. International registrations that have lapsed are not removed from the database.

## SEARCH BY

Design Names Numbers Dates Country

Indication of Products =

Locarno =

Description =

search ↗

CURRENT SEARCH

PROD:watch ✖

## FILTER BY

Designation Locarno Class Reg. Date \* Contracting Party \*

CH	1,535	MC	1,131	TN	991	MA	963	LI	960
FR	894	DE	890	IT	889	EG	887	BX	851
BE	851	NL	851	LU	851	ES	813	ME	684
MK	683	GR	666	MD	642	MN	634	SG	611
TR	594	UA	591	ID	586	EM	583	KP	556
RS	523	VA	489	SI	462	CW	409	BQ	408
SX	406	GE	380	RO	378	KG	376	BZ	364

Display: List

Sort: Count - desc

filter T

1 - 10 / 1,627

edit columns <>

10

per page

1

/ 163

Reg. No	Holder	Reg. Date	Locarno Cl	Ind. Prod.	Des.	Designs	Image
DM/046674	HYSEK JÖRG	1999-02-03	03-01	Etui pour montre	AN,EG,ES,ID,MA,TN,V	1	
DM/082429	CARTIER CREATION STUDIO SA	2013-12-13	10-02	1. Watch; 2. Watch case; 3. Watch dial; 4. Watch; 5. Watch bracelet; 6. Watch dial; 7. Watch dial	CH,EM,SG,TR	8	
DM/083367	FRANCK MULLER WATCHLAND SA	2014-04-09	10-02	1. Montre-bracelet	EM,MC,SG	1	
DM/065362	SWATCH AG (SWATCH SA) (SWATCH LTD.)	2004-05-12	10-02	1. Montre-bracelet	BQ,CW,EG,ID,SX,TN,I	1	
DM/073485	BÉDAT & CO SA	2010-03-26	10-02	Watch	BX,KP,CH,EM,LI,OA,S	1	
DM/073351	HUBLOT SA, GENÈVE	2010-03-18	10-02	Watch	CH,EM,SG	1	
DM/073317	OMEGA SA (OMEGA AG) (OMEGA LTD.)	2010-02-12	10-02	Watch	BZ,MA,MC,ME,AL,AM,I	1	
DM/072570	ALEXIS BARTHELAY (SOCIÉTÉ ANONYME)	2009-10-20	10-02	Watch	MA,CH,EG,EM,OM,SC	1	

# Global Design Database

A world-wide collection of industrial designs data; including WIPO Hague registrations and information from participating national offices.

## SEARCH BY

Design Names Numbers Dates Country

Indication of Products =

Design class =

Description =

search ↻

CURRENT SEARCH

PROD:(perfume) ✕

## FILTER BY

Source Designation Locarno Class Reg. Date \* Contracting Party \*

CH	106	CA	94	MC	67	DE	65	BX	57
BE	57	NL	57	LU	57	FR	53	IT	47
LI	46	EG	44	MA	43	ES	41	TN	39
GR	38	TR	36	RS	36	RO	35	UA	35
ME	32	EM	32	BG	31	SG	31	HU	31
SI	29	MK	27	KP	24	MD	22	ID	20
VA	18	AN	14	BQ	11	SX	11	SN	11

Display: List ▾ Sort: Count - desc ▾



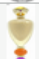




filter ▾

1 - 10 / 225

edit columns ↔

10 per page

1 / 23

Reg. No	Source	Holder	Reg. Date	Class	Ind. Prod.	Des.	Designs	Image
DM/084555	Hague	BULGARI SPA	2014-10-02	LC.09-01	1. <i>Perfume</i> bottle	MA,CH,EM,LI,MC,SG	1	
DM/084494	Hague	BULGARI SPA	2014-09-26	LC.09-01	1. <i>Perfume</i> bottle	MA,CH,EM,LI,MC,SG	1	
DM/083330	Hague	BULGARI SPA	2014-04-04	LC.09-01	1. <i>Perfume</i> bottle	MA,CH,EM,LI,MC,SG	1	
DM/083058	Hague	COMPTOIR NOUVEAU DE LA PARFUMERIE	2014-02-20	LC.09-01	1. <i>Perfume</i> bottle	MA,CH,EM,MC,SG,T	1	
DM/082126	Hague	PACIFIC CREATION	2013-10-09	LC.09-03	1. <i>Perfume</i> packaging	CH,EG	1	
DM/081534	Hague	BOURJOIS SARL	2013-07-11	LC.09-01	1. Fragrance bottle	CH,TR	1	
DM/080039	Hague	FENDI ADELE S.R.L.	2013-01-30	LC.09-01	1. <i>Perfume</i> bottle	CH,EM,OM,SG,TR	1	

## Key resources

[International Designs Bulletin](#)

[Fee Calculator](#)

[Forms](#)

[E-Filing Portfolio Manager](#)

[E-Renewal](#)

### Databases

[International Designs Bulletin](#)

[Global Design Database](#)

[Hague Express Database](#)

### Fees and payment

[Fee calculator](#)

[Fees and payment options](#)

[Schedule of fees](#)

[Individual designation fees](#)

### Statistics

[Annual statistics](#)

[Monthly statistics](#)

### Online services

[E-Filing Portfolio Manager](#)

[E-Renewal](#)

[E-Payment](#)

### Legal and procedural information

[Legal texts](#)

[Hague Guide for Users](#)

[Hague System E-Filing Tutorial](#)

[Information notices](#)

[National and regional procedures](#)


[Publications](#)

[▲ Hide resources](#)

# 電子出願システム

WIPO reference

39014

- Applicant(s)
- Representative Correspondence
- Designation(s)
- Design(s)
- Related Design(s)
- Description
- Creator(s)
- Priority(ies)
- Exhibition(s)
- More Optional Contents
- Publication
- Signature
- Payment/Validat.
- Summary
-  Return to e-filing manager

## Information regarding data entry

Please continue on this page if you wish to register a new applicant. Otherwise, click on the next tab on the left.

## Information concerning the applicant

### Name and address

Name \*  Telephone

Address \*  Fax

Zip/Post code  E-mail address

Town \*  Address of website

Country\*  

(\*) Compulsory

### Entitlements \*\*

Nationality  

Domicile  

Real and effective industrial or commercial establishment  

Habitual residence  

(\*\*) Indicate at least one entitlement



### Applicant's Contracting Party (ACP)

Applicant's Contracting Party  

Save

Cancel

## Applicant(s) registered

Name	Address	Nat.	Dom.	Estab.	Res.	ACP	Act(s)	Actions
Yves Closet	34 Ch. des Colombettes 1211 Lausanne Switzerland	BX		EM		EM	60/99	 

## International designs E-Renewal System

Please enter your **International Registration Number (IRN)**:

(for example: 123456, 123456A) \*

This application enables you to **renew** the international registration. Please follow instructions provided on each screen.

Online payment of the renewal fee, either by WIPO Current Account or by credit card, is made on last screen.

In order to pay by WIPO Current Account, you will need to provide the **username** and **password** that WIPO provided you when you opened the Current Account. **The username and password are the same as those your company uses to consult its WIPO Current Account (please contact your company's Finance department).**

## E-Payment Service

---

» Enter WIPO Reference (Step 1 of 3)

Please enter the **9 or 10 digits** of the **WIPO Reference\*\*\***:

(for example: EN-I/ **458714401**/CO)

Submit

Reset

This service **allows** for the payment of fees notified in WIPO irregularity letters or other WIPO communications concerning the **Madrid or Hague systems**.

Users are invited to make payments by **credit card (American Express, Mastercard, Visa)** or through a **WIPO Current Account**.

In order to use the Current Account payment option, users need to provide their **username** and their **password** generated by WIPO for Current Account holders. **Please note that the ID and password are the same as that your company uses for online consultation of its Current Account (please contact your compagny's Finance Department) and for E-Renewal.**

---

## Key resources

[International Designs Bulletin](#)

[Fee Calculator](#)

[Forms](#)

[E-Filing Portfolio Manager](#)

[E-Renewal](#)

### Databases

[International Designs Bulletin](#)

[Global Design Database](#)

[Hague Express Database](#)

### Fees and payment

[Fee calculator](#)

[Fees and payment options](#)

[Schedule of fees](#)

[Individual designation fees](#)

### Statistics

[Annual statistics](#)

[Monthly statistics](#)

### Online services

[E-Filing Portfolio Manager](#)

[E-Renewal](#)

[E-Payment](#)

### Legal and procedural information

[Legal texts](#)

[Hague Guide for Users](#)

[Hague System E-Filing Tutorial](#)

[Information notices](#)

[National and regional procedures](#)

[Publications](#)

[▲ Hide resources](#)



# Hague System Fee Calculator

Enter the details below to quickly estimate the application or renewal fees in Swiss francs (CHF)

Type:	<input type="text" value="International Application"/>
Date:	<input type="text" value="04.10.2016"/>
Applicant's State of origin (Hague "1960" Act):	<input type="text" value="Not Selected"/>
Applicant's Contracting Party (Geneva "1999" Act):	<input type="text" value="Not Selected"/>
Add the number of industrial designs:	<input type="text" value="1"/>
Add the number of reproduction(s) of the industrial design(s):	<input type="text" value="1"/>
If using the paper application form, add the number of pages of reproductions: <a href="#">(free if you use the e-filing interface)</a>	<input type="text" value="0"/>
Add the number of words of description:	<input type="text" value="0"/>
Locarno Classification:(For KR designations only)	<input type="text" value="1"/>
<a href="#">Economic Status</a> : (For US designations only)	<input type="text" value="Undiscounted (default)"/>

Continue

Benelux (BX) designation includes Belgium, Luxembourg and the Netherlands  
European Union (EM) designation includes its [28 Member states](#)  
African Intellectual Property Organization (OAPI) designation includes its [17 Member states](#)

## Related Links

[Schedule of Fees](#)

[Individual fees](#)

[FAQs](#)

[E-filing/Forms](#)

## Payment of Fees - Hague System

Under the [Hague system](#), all fees must be paid in **Swiss francs (CHF)**.

### Types of fees

- [Schedule of fees](#)
- [Individual fees under the Hague Agreement](#) [PDF](#)
- [Type of designation fee payable for the designation of that contracting party](#) [PDF](#)
- [Reduction of fees for applicants from least developed countries as from January 1st 2008](#) [PDF](#)

### How to pay

Fees can be paid by :

#### Credit card

- [E-filing](#) (only for registration)
- [E-Renewal](#) (only for renewals)
- [E-Payment](#) (only for payment of fees as notified in irregularity letters or other WIPO communications with regard to international applications)

#### WIPO current account

Deductions from [WIPO current accounts](#) are authorized either by:

- entering your WIPO current account number in the [E-Filing](#), [de E-Renewal](#) or [E-Payment](#), systems, or
- quoting your WIPO current account number in the [forms](#).

#### Bank and postal transfer

Payments can only be made in Swiss francs.

Note that all bank charges are to be settled by the payor.

Please indicate the purpose of your payment and information regarding the application (basic application and/or registration number, IRN, E-Filing reference number, applicant or holder name, etc.) in the reference of your payment.

### Tools

- [Fee calculator](#) (calculates the cost of filing an international application or a renewal)

**Warning** - Requests for payment of fees that do not come from the International Bureau of WIPO.

#### Bank transfer

Account name: WIPO / OMPI

Credit Suisse, CH-1211 Geneva 70

IBAN: CH5104835048708081000

Swift: CRESCHZZ80A

#### Postal transfers (within Europe only)

Account name: WIPO / OMPI

SWISS POST/Postfinance, Engehaldenstrasse 37, CH-3030 Bern

IBAN: CH0309000000120050008

Swift: POFICHBE

## Schedule of Fees (as in force on January 1, 2015)

I.	International Applications	Swiss francs
1.	<b>Basic fee 1</b>	
1.1	For one design	397
1.2	For each additional design included in the same international application	19
2.	<b>Publication fee 1</b>	
2.1	For each reproduction to be published	17
2.2	For each page, in addition to the first, on which one or more reproductions are shown (where the reproductions are submitted on paper)	150
3.	<b>Additional fee where the description exceeds 100 words per word exceeding 100 words 1</b>	2
4.	<b>Standard designation fee 2</b>	
4.1	Where level one applies	
4.1.1	For one design	42
4.1.2	For each additional design included in the same international application	2
4.2	Where level two applies	
4.2.1	For one design	60
4.2.2	For each additional design included in the same international application	20
4.3	Where level three applies	
4.3.1	For one design	90
4.3.2	For each additional design included in the same international application	50
5.	<b>Individual designation fee (the amount of the individual designation fee is fixed by each Contracting Party concerned) 3</b>	

# Individual Fees under the Hague Agreement

(Last update: July 2016)

## Individual designation fees at the international application stage

		Swiss francs
African Intellectual Property Organization (OAPI)	for a single deposit	83
	for a multiple deposit	124
	Applicants from LDCs <sup>1</sup> :	
	– for a single deposit	8
	– for a multiple deposit	12
European Union	for each design	67
Japan	for each design	665
Hungary	for the first design	70
	for each additional design	17
Kyrgyzstan	for the first design	129
	for each additional design	64
Republic of Korea <sup>2</sup>	for each design	210
Republic of Moldova	for the first design	73
	for each additional design	7
United States of America	First part:	
	– default amount	733
	– amount for "small entity" applicant	367

## Key resources

[International Designs Bulletin](#)

[Fee Calculator](#)

[Forms](#)

[E-Filing Portfolio Manager](#)

[E-Renewal](#)

### Databases

[International Designs Bulletin](#)

[Global Design Database](#)

[Hague Express Database](#)

### Fees and payment

[Fee calculator](#)

[Fees and payment options](#)

[Schedule of fees](#)

[Individual designation fees](#)

### Statistics

[Annual statistics](#)

[Monthly statistics](#)

### Online services

[E-Filing Portfolio Manager](#)

[E-Renewal](#)

[E-Payment](#)

### Legal and procedural information

[Legal texts](#)

[Hague Guide for Users](#)

[Hague System E-Filing Tutorial](#)

[Information notices](#)

[National and regional procedures](#)

[Publications](#)

[▲ Hide resources](#)

## Guide for Users

The Guide serves as a comprehensive point of reference on the entire [Hague System](#).

Within the Guide you will find background information on, and descriptions of, Hague System procedures and requirements, all accompanied by the relevant legal references.

### Too much detail?

We have produced a number of complementary, quick-reference resources to help you with specific parts of the Hague System:

- [How to file your application](#) (step-by-step tutorial)
- [How to manage your Hague System registration](#)
- [How to search designs registered under the Hague System](#)

---

### Introduction

- [The Hague System: general overview](#)
- [Advantages of the System](#)
- [Becoming party to the Hague Agreement](#)
- [Declarations by Contracting Parties](#)
- [How to search the International Register](#)

### The international procedure (1960 and 1999 Acts)






#### General

- [Communications with the International Bureau](#)
- [Calculation of time limits](#)
- [Irregularities in postal and delivery services](#)
- [Languages](#)
- [Payment of fees to the International Bureau](#)
- [Representation before the International Bureau](#)

- [International procedure](#)
- [Harmonization of terminology](#)

## Hague System E-Filing Tutorial (E-Filing version 2.3)

To file an international design application online, you first need to create a [WIPO user account](#), which will then grant you access to the [E-Filing Portfolio Manager](#), allowing you to create and manage your Hague System applications. The E-Filing Interface is the second step, through which you fill in the application form itself.

- [E-Filing Portfolio Manager: the gateway to create and manage applications](#) | Video 
    - [General features](#)
    - [Create a new application](#)
    - [Retrieve your sent applications](#) and know the current status
    - [Edit your ongoing applications](#)
  - [E-Filing interface: the application form](#)
    - [General features](#) | Video 
    - [Essential sections](#) | Video 
    - [Sections related to certain designations](#) | Video 
    - [Remaining sections](#) | Video 
  - [E-Filing Communications: Reply to invitation to correct irregularities online](#)
    - [Action Required: Reply to invitation to correct irregularities](#)
    - [No Action Required: Retrieve observations and abandonment letters](#)
    - [Archived: Retrieve previous notifications](#)
- ▶ [Troubleshooting and technical details](#) ↓

---

### **E-Filing Portfolio Manager: the gateway to create and manage applications**

The E-filing Portfolio Manager helps you create new Hague System applications and manage your existing applications (both sent and unsent). In the future, the Portfolio Manager will help you manage the whole lifespan of your Hague registration, from filing to expiration.

## Hague Information Notices

Information notices highlight important developments, such as accessions or ratifications by new Contracting Parties, declarations made by Contracting Parties, as well as amendments to the legal framework of the Hague system.

### Email updates

[Hague Notices](#) – Information Notices and updates on developments in the Hague System.

[Sign up](#) | [All WIPO newsletters](#)

[Search](#) | [Browse by year](#)

Issuance Date	Description	
Aug 11, 2016	<b>Guidance on preparing and providing reproductions in order to forestall possible refusals on the ground of insufficient disclosure of an industrial design by Examining Offices</b> (HAGUE/2016/9)	<a href="#">DOC</a> <a href="#">PDF</a>
Jun 29, 2016	<b>Accession to the 1999 Act: Democratic People's Republic of Korea</b> (HAGUE/2016/8)	<a href="#">DOC</a> <a href="#">PDF</a>
May 31, 2016	<b>Change in the amounts of the individual designation fee: Japan</b> (HAGUE/2016/7)	<a href="#">DOC</a> <a href="#">PDF</a>
Mar 30, 2016	<b>Designation of the Republic of Korea in an international application: priority claim under Article 4 of the Paris Convention</b> (HAGUE/2016/6)	<a href="#">DOC</a> <a href="#">PDF</a>
Mar 30, 2016	<b>Ability to send corrections to irregularities online and other significant improvements to the E-Filing Portfolio Manager</b> (HAGUE/2016/5)	<a href="#">DOC</a> <a href="#">PDF</a>
Feb 17, 2016	<b>Declarations under Articles 11(1) and 13(1) of the 1999 Act: Singapore</b> (HAGUE/2016/4)	<a href="#">DOC</a> <a href="#">PDF</a>
Feb 8, 2016	<b>Withdrawal of the declaration contained in the instrument of ratification of the 1999 Act: Denmark</b> (HAGUE/2016/3)	<a href="#">DOC</a> <a href="#">PDF</a>



## Key resources

[International Designs Bulletin](#)

[Fee Calculator](#)

[Forms](#)

[E-Filing Portfolio Manager](#)

[E-Renewal](#)

### Databases

[International Designs Bulletin](#)

[Global Design Database](#)

[Hague Express Database](#)

### Fees and payment

[Fee calculator](#)

[Fees and payment options](#)

[Schedule of fees](#)

[Individual designation fees](#)

### Statistics

[Annual statistics](#)

[Monthly statistics](#)

### Online services

[E-Filing Portfolio Manager](#)

[E-Renewal](#)

[E-Payment](#)

### Legal and procedural information

[Legal texts](#)

[Hague Guide for Users](#)

[Hague System E-Filing Tutorial](#)

[Information notices](#)

[National and regional procedures](#)

[Publications](#)

[▲ Hide resources](#)

ありがとうございました

[www.wipo.int/hague/en](http://www.wipo.int/hague/en)

WIPO日本事務所

〒100-0013

東京都千代田区霞ヶ関1-4-2 7F

電話：03-5532-5030

Eメール：[japan.office@wipo.int](mailto:japan.office@wipo.int)