

Class 4. Patent Map

1. Analyzing Patent Information

1) Quantitative Analysis

The method understanding and analyzing patent through numerical statistic of patent information. Most usable data comes from bibliographical information including the number of patent applications, assignees, inventors, or patent classification codes, etc

Quantity-based Analysis

Time-Based Analysis

Ranking Analysis, etc.

2) Qualitative Analysis

The method understanding and analyzing the content of patent. Generally, this analysis method is performed by the inter-relationship of technology content or patent classification code, assignee, application date, etc

Selection of core patent

Technology development map, etc.

2. Patent Map (Technology Road Map)

Patent Map is the visualized expression of total patent analysis results to understand complex and various patent information easily and effectively.

The patent map is produced by gathering related patent information of a target technology field, processing, and analyzing it.

Error! Unknown switch argument.

3. The Process of Patent Map

Error! Unknown switch argument.

4. What advantages can be taken from Patent Map?

1) Administrating / Planning

- Development Trend
- Market Research
- Relation of Companies

2) Researching/Technology Promoting

- Technology Trend
- Technology GAP
- Technology Portion
- Technology Relation

3) Technology Management

- Possible Infringement
- Analyze Claims
- Set up new patent application direction

5. The Kinds of Patent Map Results

1) Quantitative Analysis Map (Statistical Analysis Map)

- Rate Map
- Number Map
- Trend Map
- Relation Map
- Radar Map
- Portion Map, etc.

2) Qualitative Analysis Map

- List Map
- Matrix Map

TEMSET Map
Development Map
Problems Vs. Solutions Map, etc.

6. The Examples of Quantitative Analysis

1) Portion rate Map 2) Ranking Map
Error! Unknown switch argument.

3) Trend Map (2D) 4) Trend Map(3D)
Error! Unknown switch argument.

5) Portfolio Map 6) Citation Statistical Analysis
Error! Unknown switch argument.

7. The Examples of Quantitative Analysis

1) Matrix Map

Matrix map shows the correlation between technical elements (such as purpose and technical item) obtained from patent information in the form of matrix.

It helps to find important problems affecting the development of a technology field. Moreover, with the addition of a time axis, trends in problems affecting technological development can also be observed.

Error! Unknown switch argument.

2) TEMPST Map (1)

TEMPST Map shows the technology analysis or classification based on different points of analysis views.

(Treatment, Effect, Materials, Process, Products, and Structure)

The point of Analysis view		Examples
T	Treatment	Temperature, Velocity, Time, Frequency, Pressure, etc
E	Effect	Purpose, performance, Efficiency, etc
M	Material	Material, Component, Compound, Addition, etc.
P	Process	Manufacturing Methods, System, Procedure, etc.
P	Product	Product, Parts, Results, Outputs, etc.
S	Structure	Structure, Form, Device, Component, Circuit, etc.

3) TEMPST Map (2) - Example

Patent No.	TEMPST						Technology
	T	E	M	P1	P2	S	
55-10855				O			METHOD OF MANUFACTURING COMPOSITE ROTOR
58-153775		O		O			PREPARATION OF THIN FILM
60-89530				O			PRODUCTION OF COMPOSITE SUPERCONDUCTIVE COMPOUND WIRE ROD
60-210531	O			O			PRODUCTION OF THIN FILM OF SCHEVREL PHASE COMPOUND BY REACTION METHOD ON SUBSTRATE
60-216592						O	LEAD-OUT DEVICE FOR SUPERCONDUCTIVE COIL

4) Technology Development Map

Error! Unknown switch argument.

5) Problems vs. Solutions Map

Error! Unknown switch argument.

8. Patent Analysis Software

Software for practicing and reproducing patent information in many different ways to make user approach to patent information easily and obtain optimized information by sorting / mixing / interconnecting / rearranging raw patent information.

The Examples of Patent Analysis Software		
Software Name	Provider	Website
PM-Manager	WIPS	www.wips.co.kr
PIAS (Patent Information Analysis System)	KIPO	www.kipo.go.kr
Patent-Lab	WISDOMAIN (Delphion)	www.wisdomain.com www.delphion.com

9. PM-Manager : Patent Analysis Software

1) Data Download

Error! Unknown switch argument.

2) Data Uploading & Deleting

Error! Unknown switch argument.

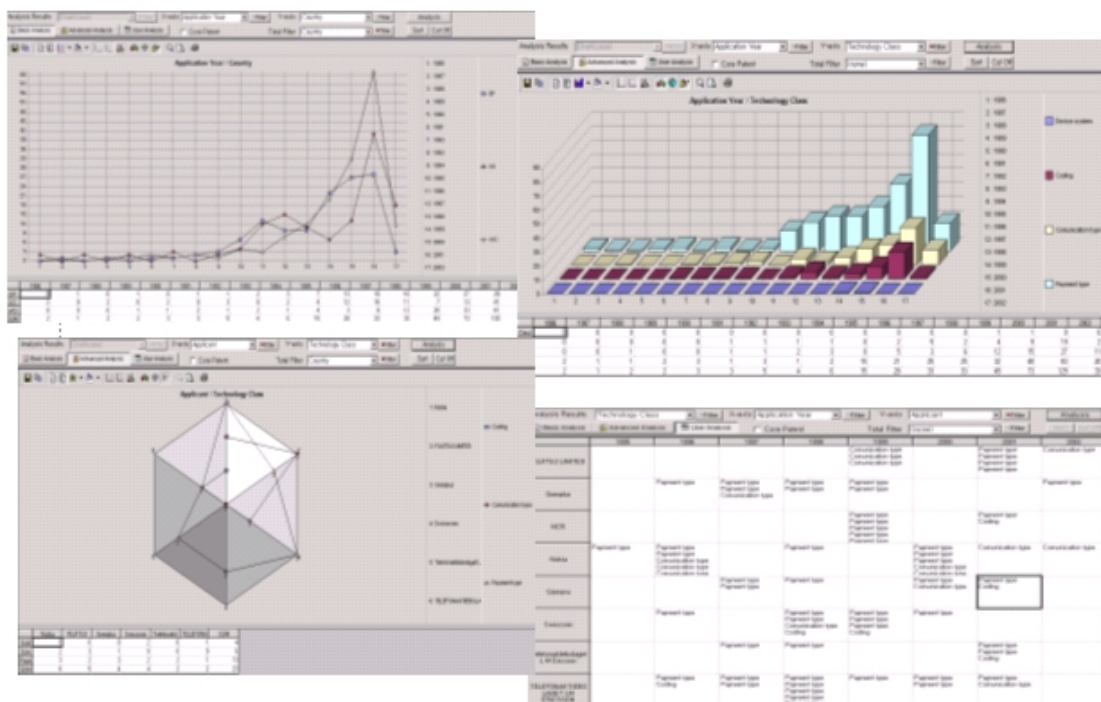
3) Normalizing Assignee Name

Error! Unknown switch argument.

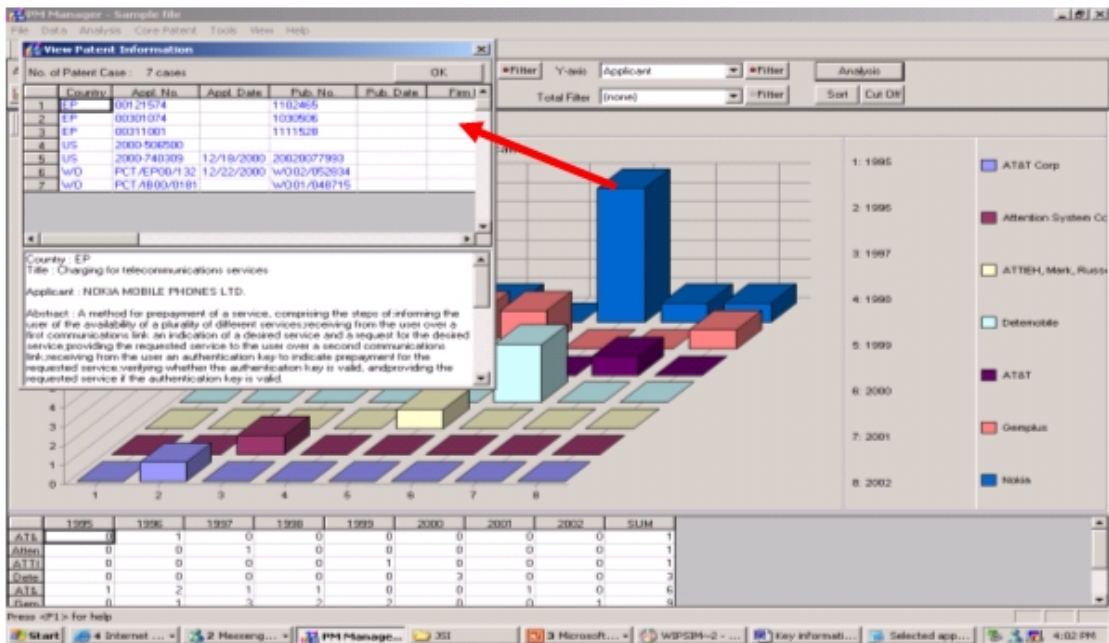
4) Classification

Error! Unknown switch argument.

5) Analysis



6) Direct link to abstract in analysis graph



7) Automatic report creation for core patents

