



**PHILIPPINES: EXAMINATION IN THE PCT
NATIONAL PHASE**

Emma A. Gopi
Daejeon, Republic of Korea
July 4, 2017

OUTLINE

- I. Overview of IPOPHL
- II. The Bureau of Patents
- III. Search and Examination
- IV. IP Statistics
- V. IPOPHL as an ISA/IPEA

I. OVERVIEW OF IPOPHL

- 1947
 - Patent Office (RA 165)
 - Trademark Registration Office (RA 166)
- 1998
 - Philippine Intellectual Property Code took effect which created the Intellectual Property Office of the Philippines (IPOPHL)
- 2013
 - IP Code was amended
 - provided enforcement functions to IPOPHL
 - created the Bureau of Copyright and Related rights

IP PROTECTION

Bureau of Patents

Bureau of Trademarks

Bureau of Copyright and Related Rights

Technology Transfer Bureau (DITTB)

and other support services bureaus

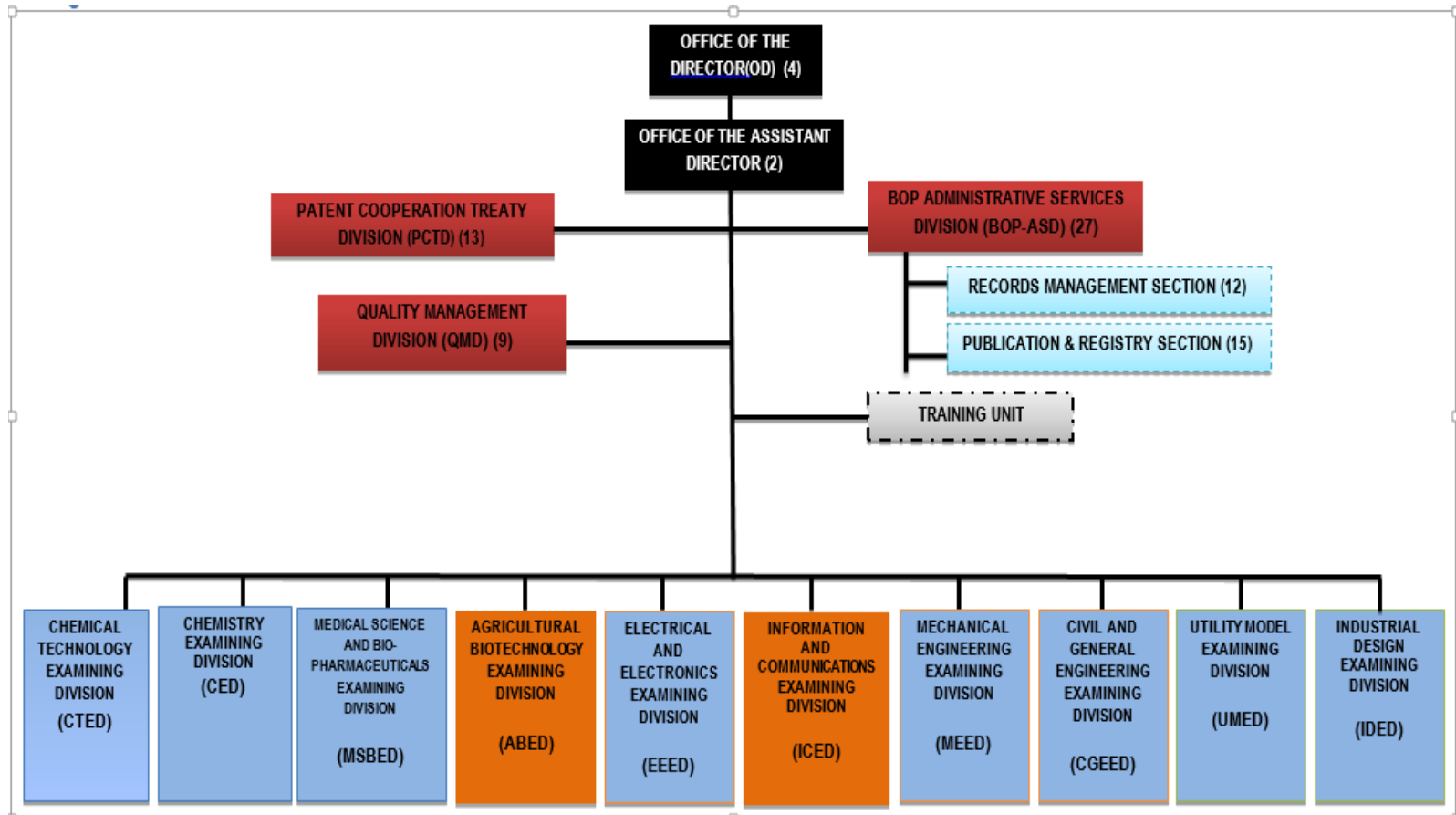
II. BUREAU OF PATENTS

INVENTION

UTILITY MODEL

INDUSTRIAL DESIGN

STRUCTURE OF THE BUREAU OF PATENTS



III. SEARCH AND EXAMINATION

IP Code (R. A. 8293)

Implementing Rules and Regulations (amended, 2011)

Manual on Substantive Examination Practices

Universally Accessible Cheaper and Quality Medicine Act (RA 9502)

Guidelines in the Examination of Pharmaceutical Patents

Guidelines in the Examination of Biotech Applications

Guidelines in the Examination of ICT Applications

EXAMINING DIVISIONS

Medical Science and BioPharmaceutical

Chemical Technology

Organic Chemistry

Mechanical Engineering

Electronics and Electrical Engineering

Civil and General Engineering

Agriculture and Plant Biotechnology

Information and Communications

Utility Model

Industrial Design

QUALITY AND CAPACITY BUILDING

Quality Management Division

Patent Quality Review System

- 2 QMD examiners / examining division / week
- report will be given back to the chief examiner
- examiner may respond/comment

Training Unit

- New Patent Examiner Training (NPET)
- Continuous Training Program (CTP)

UTILIZATION OF EXTERNAL EXAMINATION RESULTS

PCT

- International Search Report
- WOISA
- IPRP (Chapter II)

PPH

- Search and Examination of Offices of First Filing

REQUEST FOR EXTERNAL EXAMINATION RESULTS

IP Code, Sec. 39 Information Concerning Corresponding Foreign Application for Patents:

“The applicant shall, at the request of the Director, furnish him with the date and number of any application for a patent filed by him abroad, hereafter referred to as the "foreign application," relating to the same or essentially the same invention as that claimed in the application filed with the Office and other documents relating to the foreign application.”

DATABASES

- Subscription to databases such as EPOQUENet, Thomson Innovation, WIPS Global
- Publicly-available databases
- Databases of IP Offices
- IPOPHL IPDL
- IPAS

IV. IP STATISTICS

Total Number of Patent Applications Filed in 2010-2016

YEAR	NON-RESIDENT (DIRECT)	NON-RESIDENT (PCT)	RESIDENT	TOTAL
2010	251	2,972	168	3,391
2011	254	2,716	190	3,160
2012	224	2,577	180	2,981
2013	220	2,668	208	3,096
2014	150	2,877	263	3,290
2015	188	2,853	299	3,340
2016	243	2,601	254	3,098

IP STATISTICS

Total Number of Patent Granted Filed in 2010-2016

YEAR	NON-RESIDENT (DIRECT)	NON-RESIDENT (PCT)	RESIDENT	TOTAL
2010	155	903	26	1,084
2011	119	1,008	26	1,153
2012	115	1,270	18	1,403
2013	208	1,829	29	2,066
2014	175	1,823	23	2,021
2015	130	1,874	24	2,028
2016	123	1,844	31	1,998

TURNAROUND TIME (TAT)

YEAR	TAT (in months)
2011	60.24
2012	56.88
2013	50.95
2014	49.4
2015	47.88
2016	51.62

V. IPOPHL AS AN ISA/IPEA

Unanimously endorsed as an ISA/IPEA at the PCT Committee for Technical Cooperation (30th Session)