



PCT – Statistics

Patent Cooperation Treaty (PCT) Working Group

Sixth Session

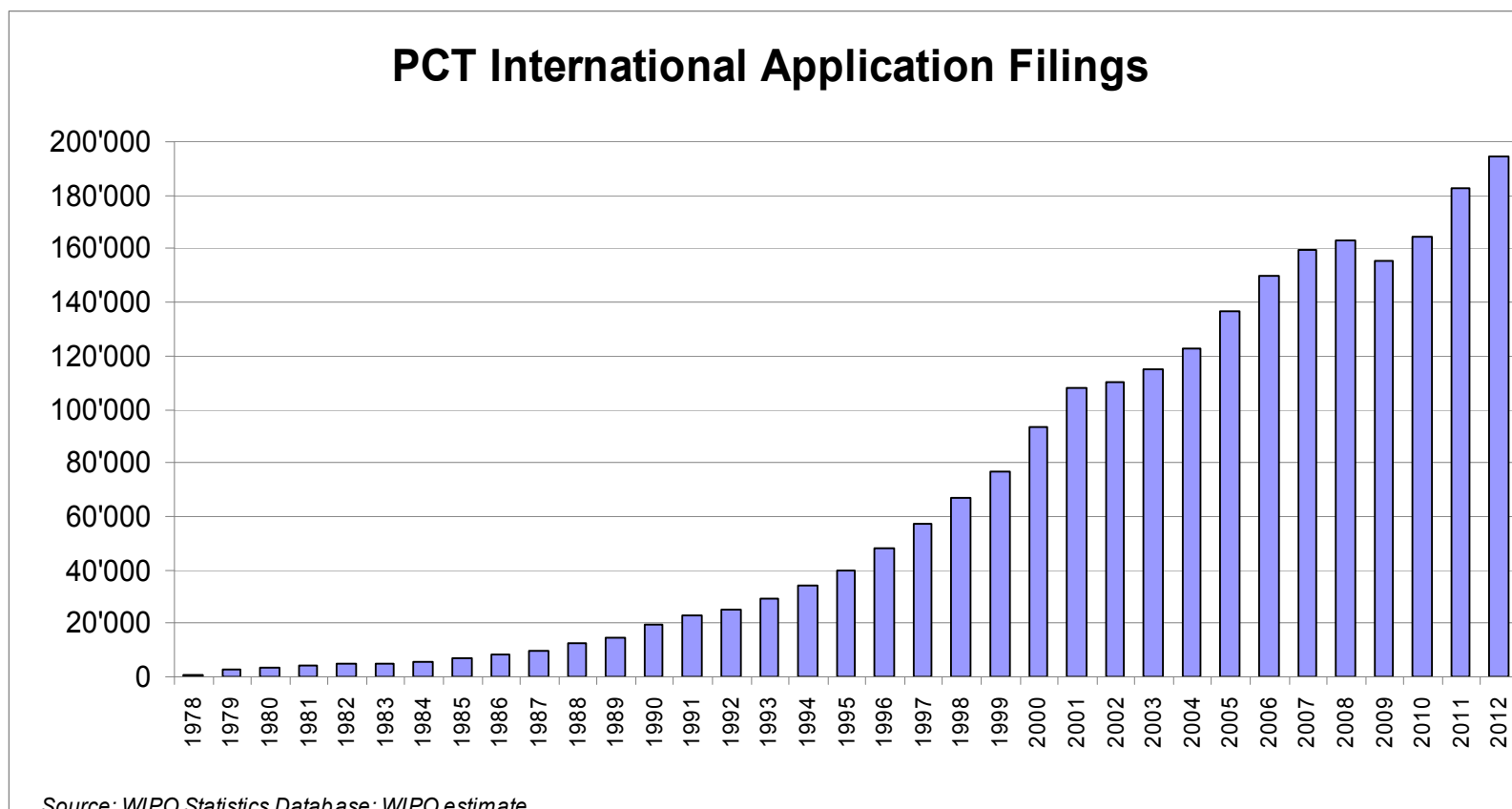
Geneva, May 21 to 24, 2013

Outline

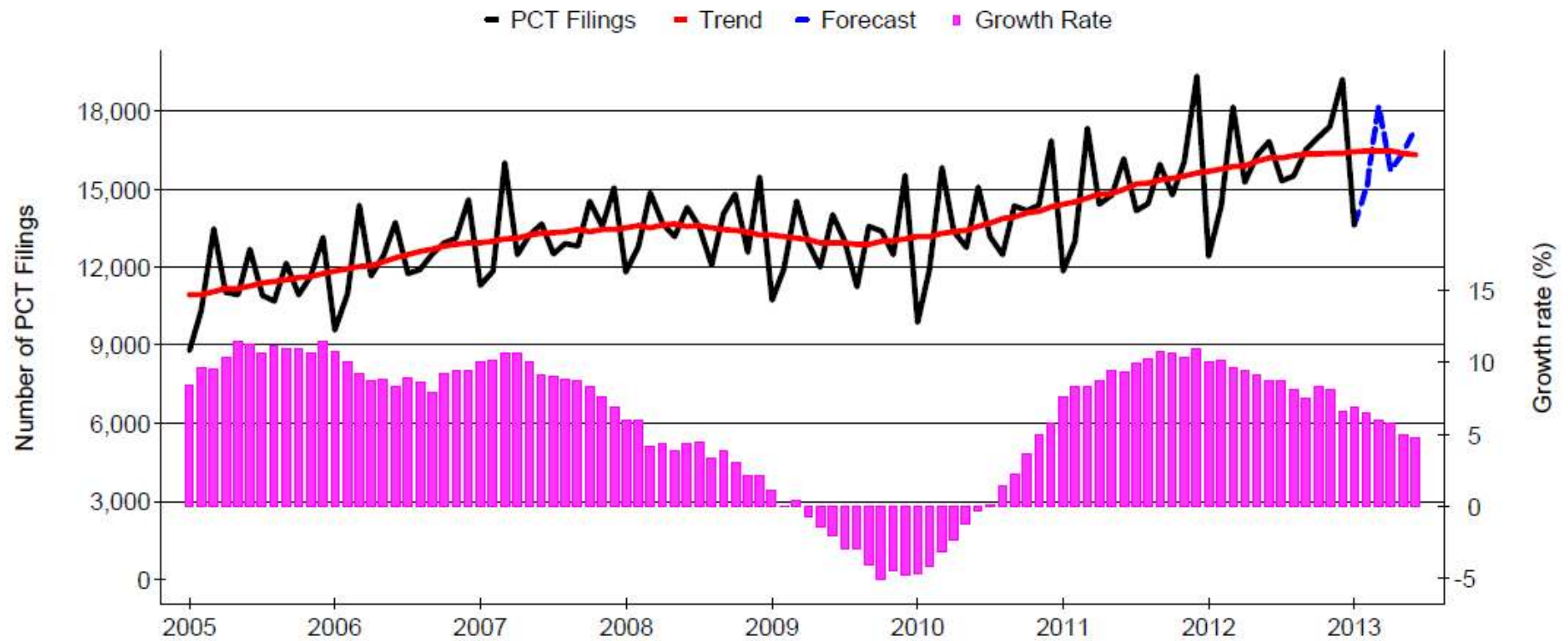
- 1) PCT International Filings
- 2) PCT National Phase Entries
- 3) Receiving Offices
- 4) International Authorities
- 5) PCT – Patent Prosecution Highway

1) PCT – International Application Filings

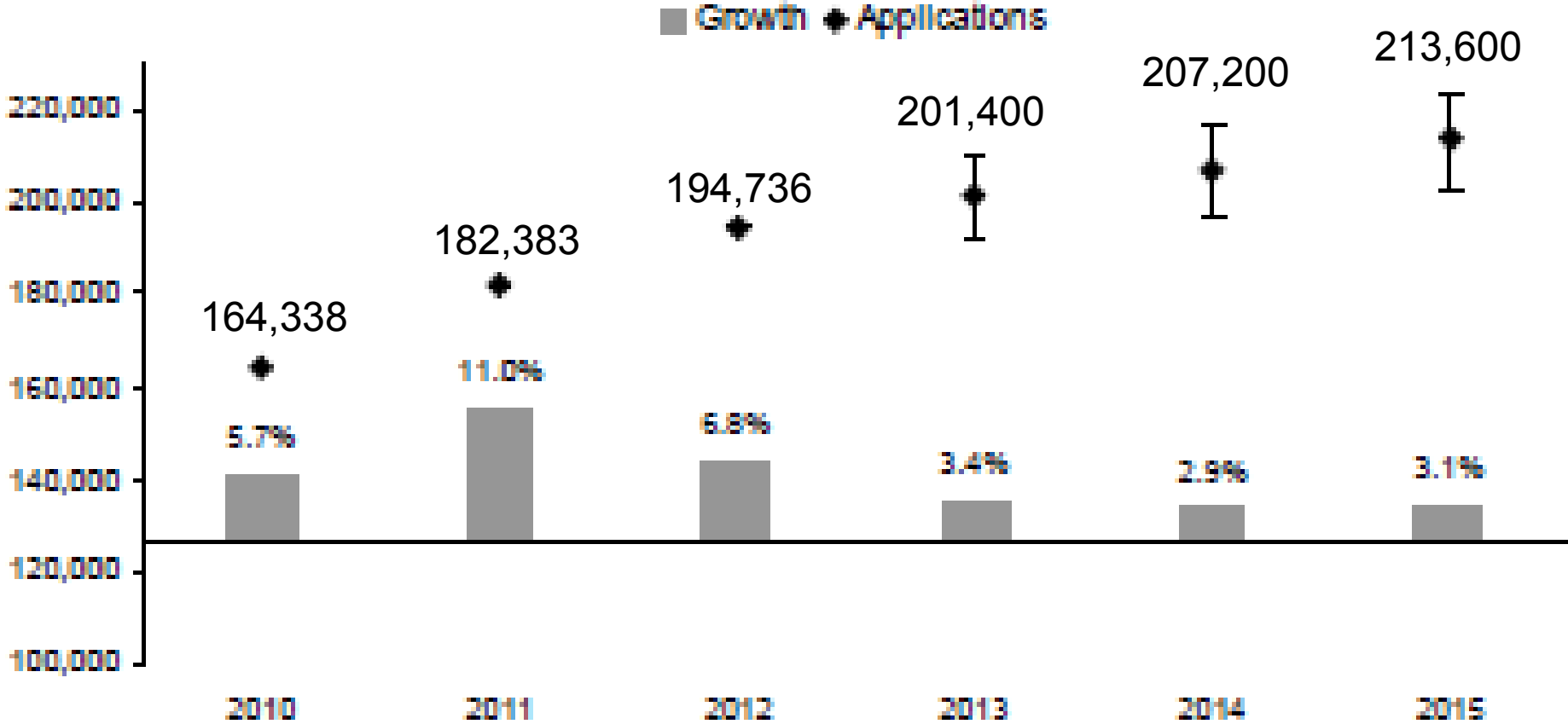
- 2010: 164,338 international applications (+5.7%)
- 2011: 182,383 international applications (+10.7%)
- 2012: 194,344 international applications (+6.6%)



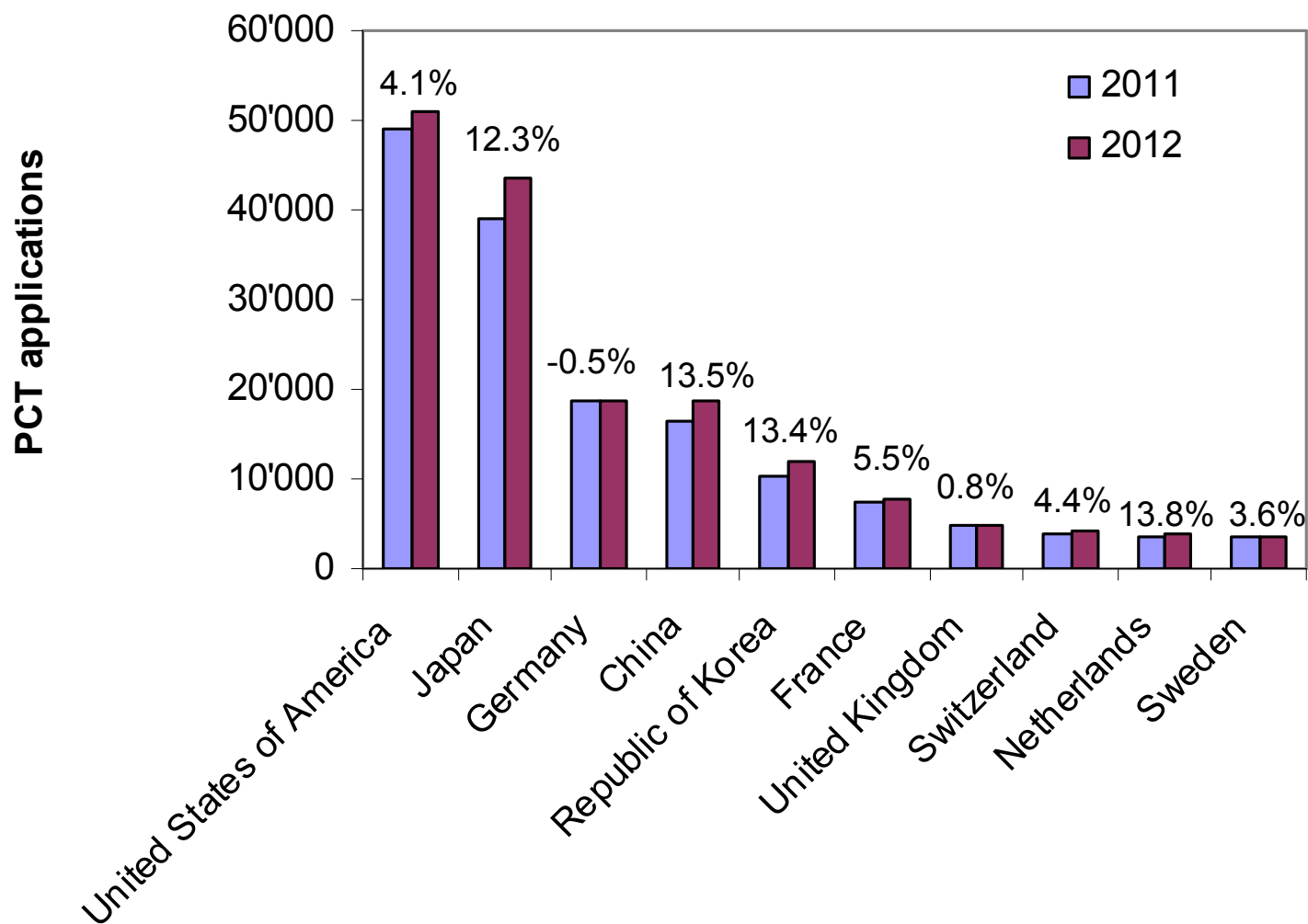
Trends in PCT Filings



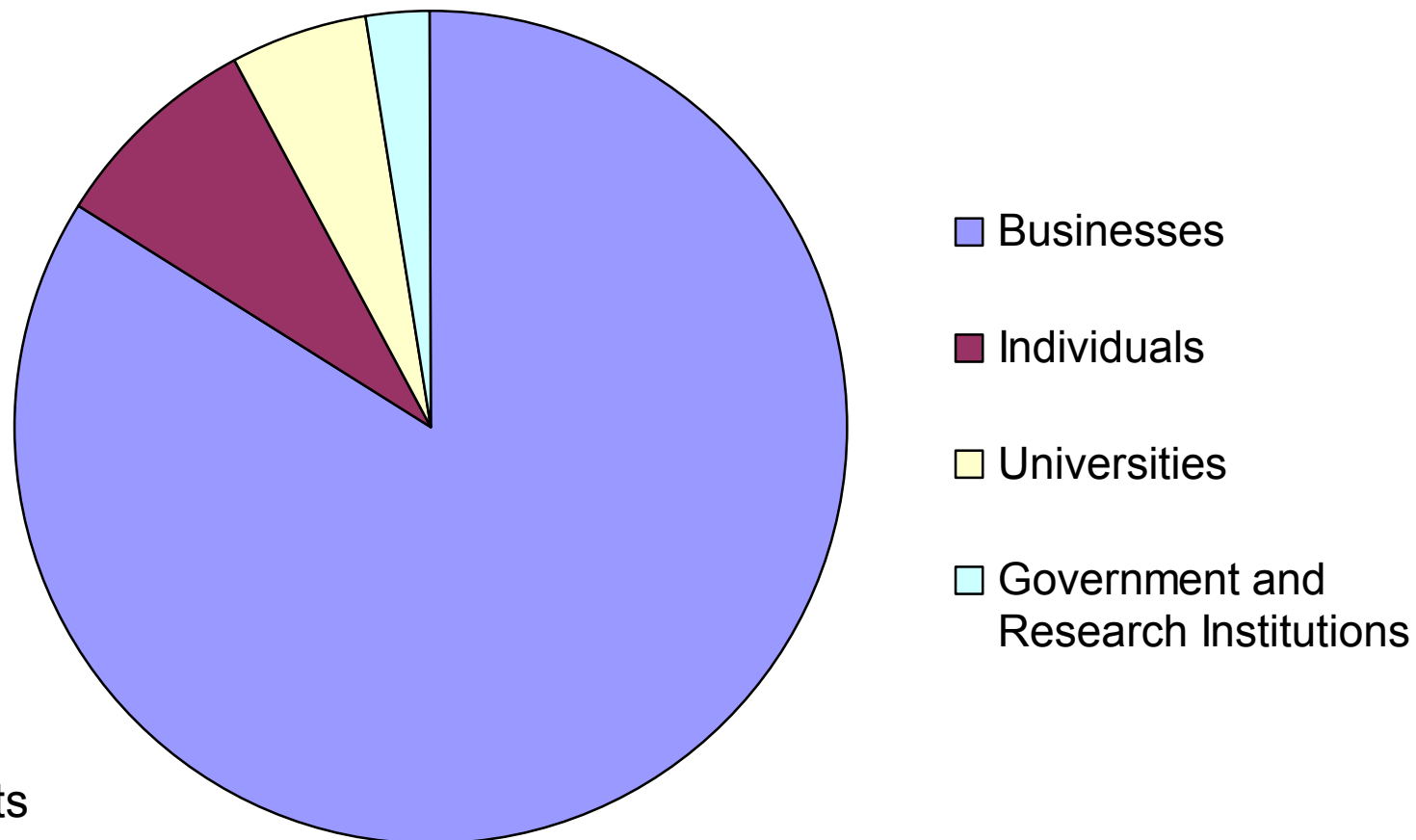
PCT Application Forecast



Applications and Growth Rate for Top 10 Origins



Distribution of PCT Applicants in 2012



Top Applicants

- **Businesses:** ZTE Corporation – 3,906 applications published
- **Universities:** University of California – 351 applications published
- **Government and Research Institutions** – Commissariat à l’Energie Atomique et aux Energies Alternatives – 391 applications published

Main Fields of Technology for PCT Published Applications and Changes from 2011 to 2012

Main Fields of Technology for PCT Applications by Percentage of Total:

<input type="checkbox"/> Electrical Machinery	13,293 applications (7.5%)
<input type="checkbox"/> Digital Communication	12,616 applications (7.1%)
<input type="checkbox"/> Computer Technology	12,391 applications (7.0%)
<input type="checkbox"/> Medical Technology	11,348 applications (6.4%)

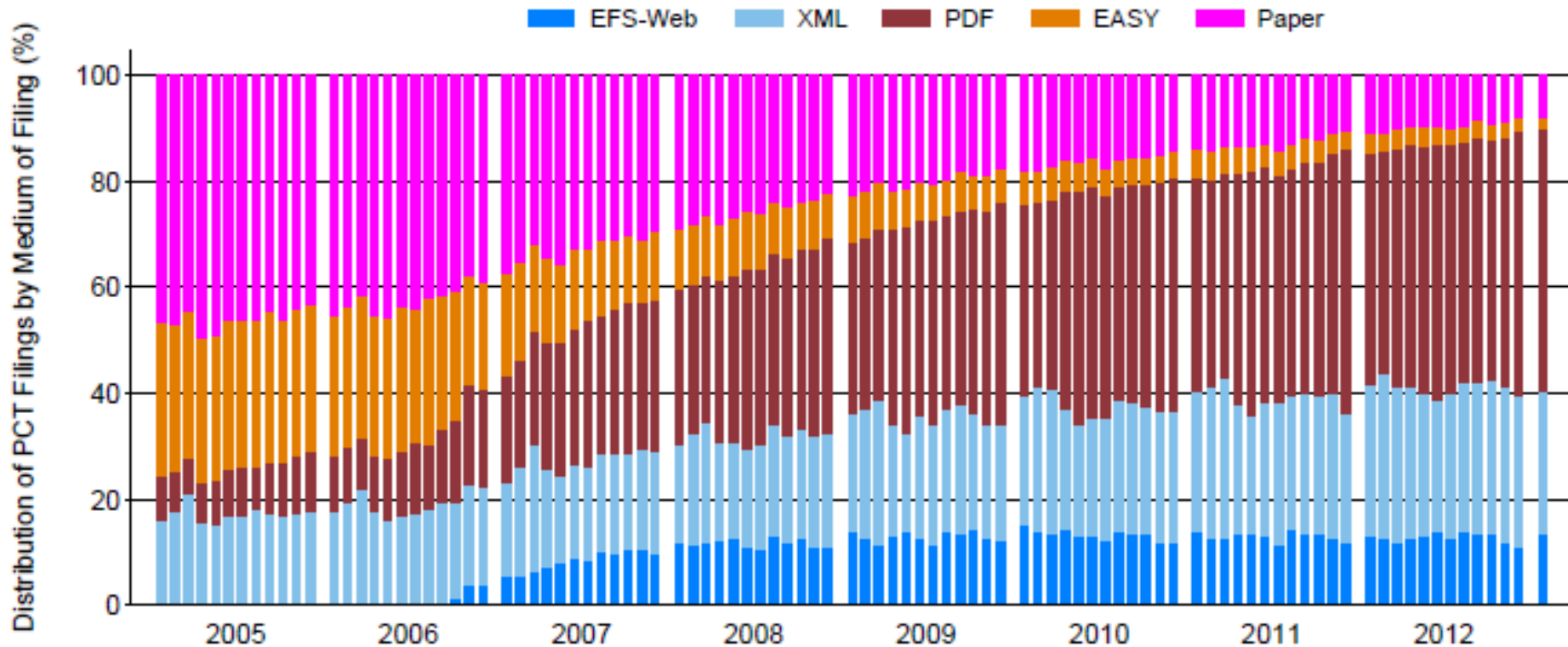
■ Largest increases:

- IT Methods for Management: +22.8%
- Micro-structural and nanotechnology: +21.2%
- Computer technology: +18.2%

■ Decreases in 2 out of 35 fields:

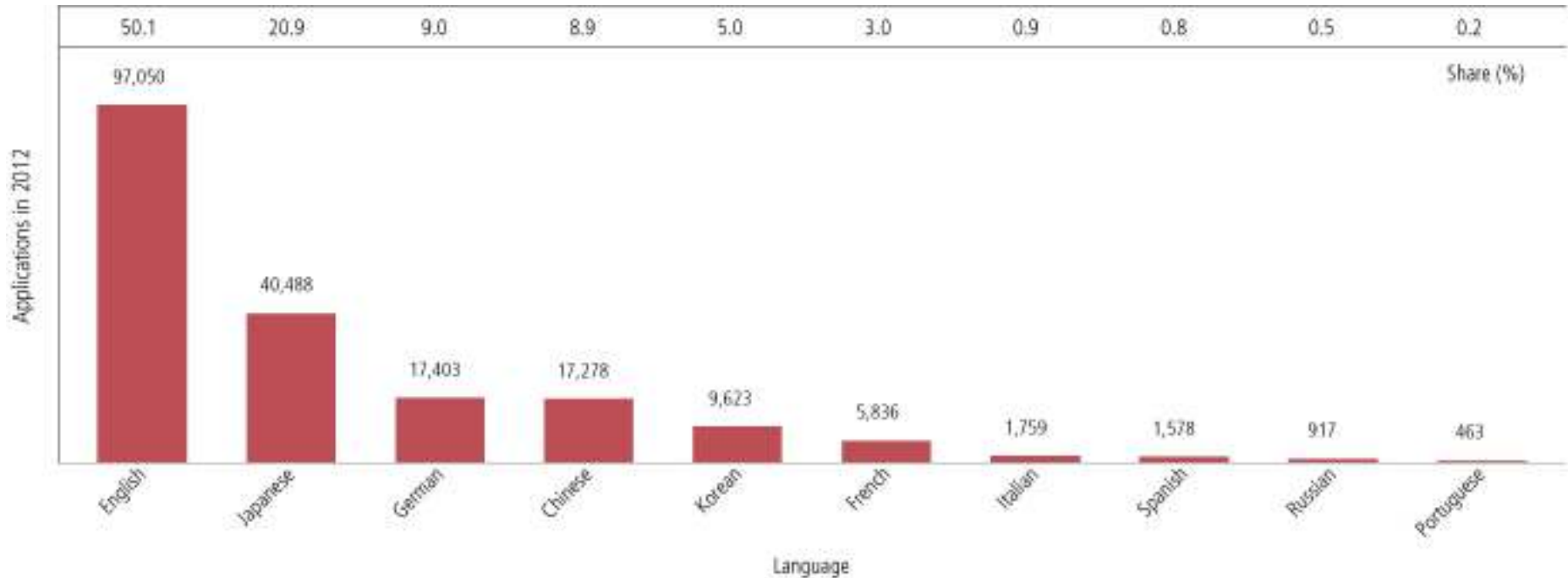
- Analysis of biological materials: -3.9%
- Handling: -1.6%

PCT Applications by Medium of Filing



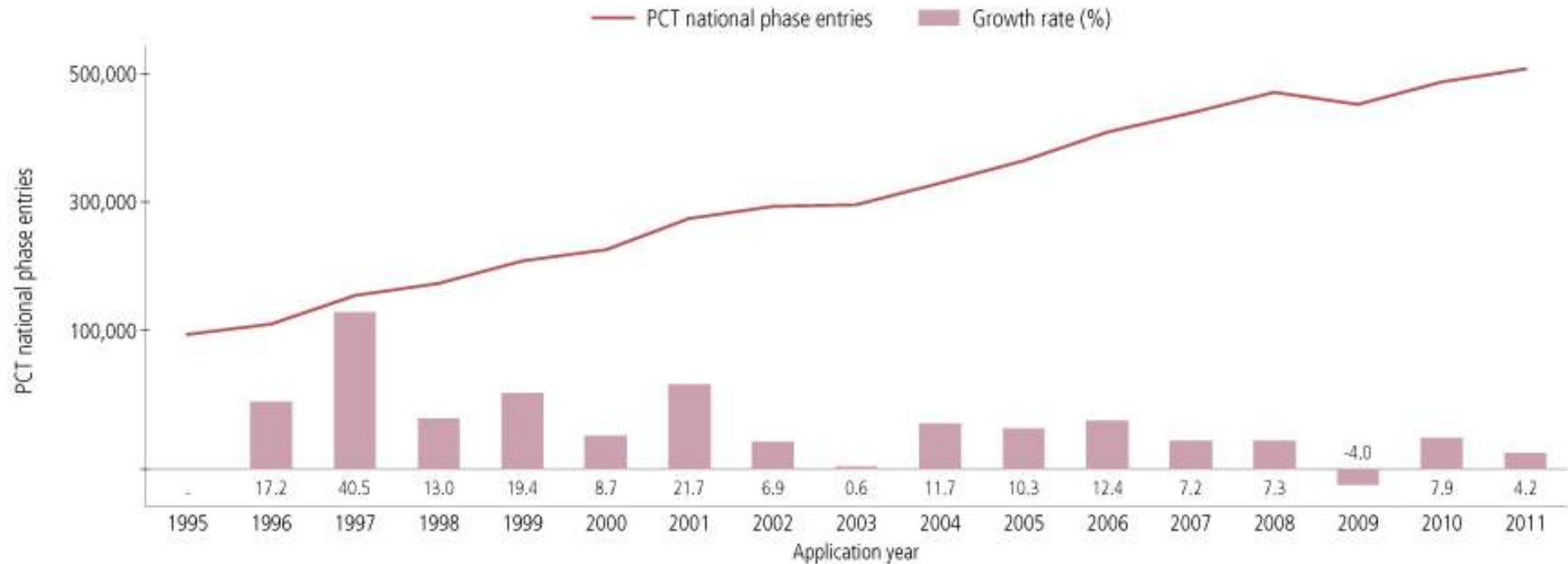
- Distribution in 2012: 9.5% paper, 3.2% PCT-EASY, 87.3% fully electronic (46.2% PDF, 28.3% XML, 12.8% EFS-Web).

Distribution of Filing Languages in 2012



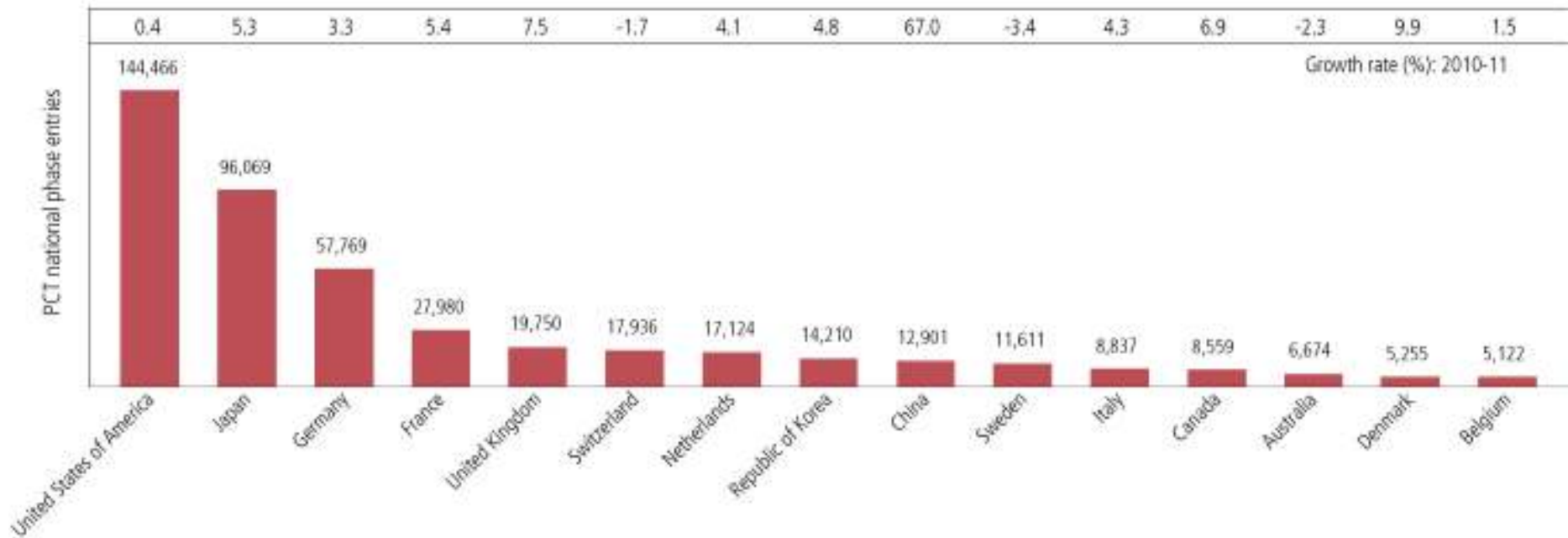
- Filings increased in Korean by 14.6%, in Chinese by 12.8%, in Japanese by 7.7% and in English by 4.3% compared to 2011.

2) PCT – National Phase Entries



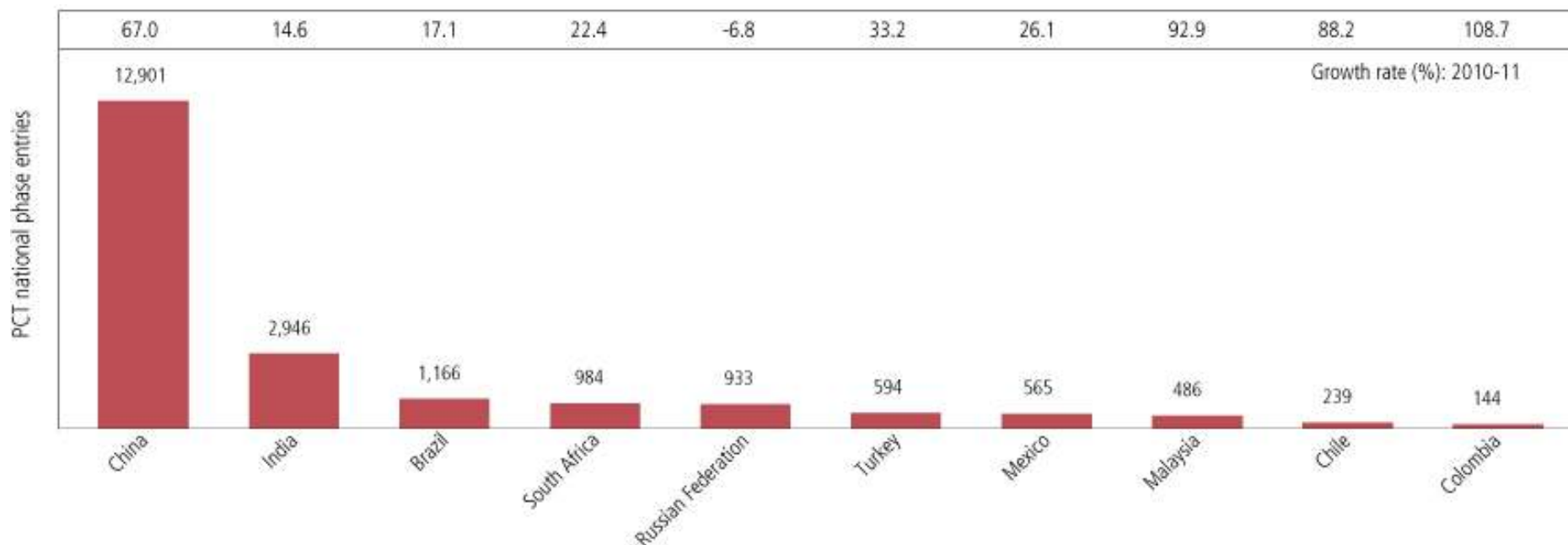
- 507,400 national phase entries estimated for 2011 (+ 4.2%)
- 431,800 (about 85%) of NPEs are from non-resident applications representing 54.9% of all non-resident patent applications filed worldwide in 2011.

PCT National Phase Entries for Top 15 Origins 2011



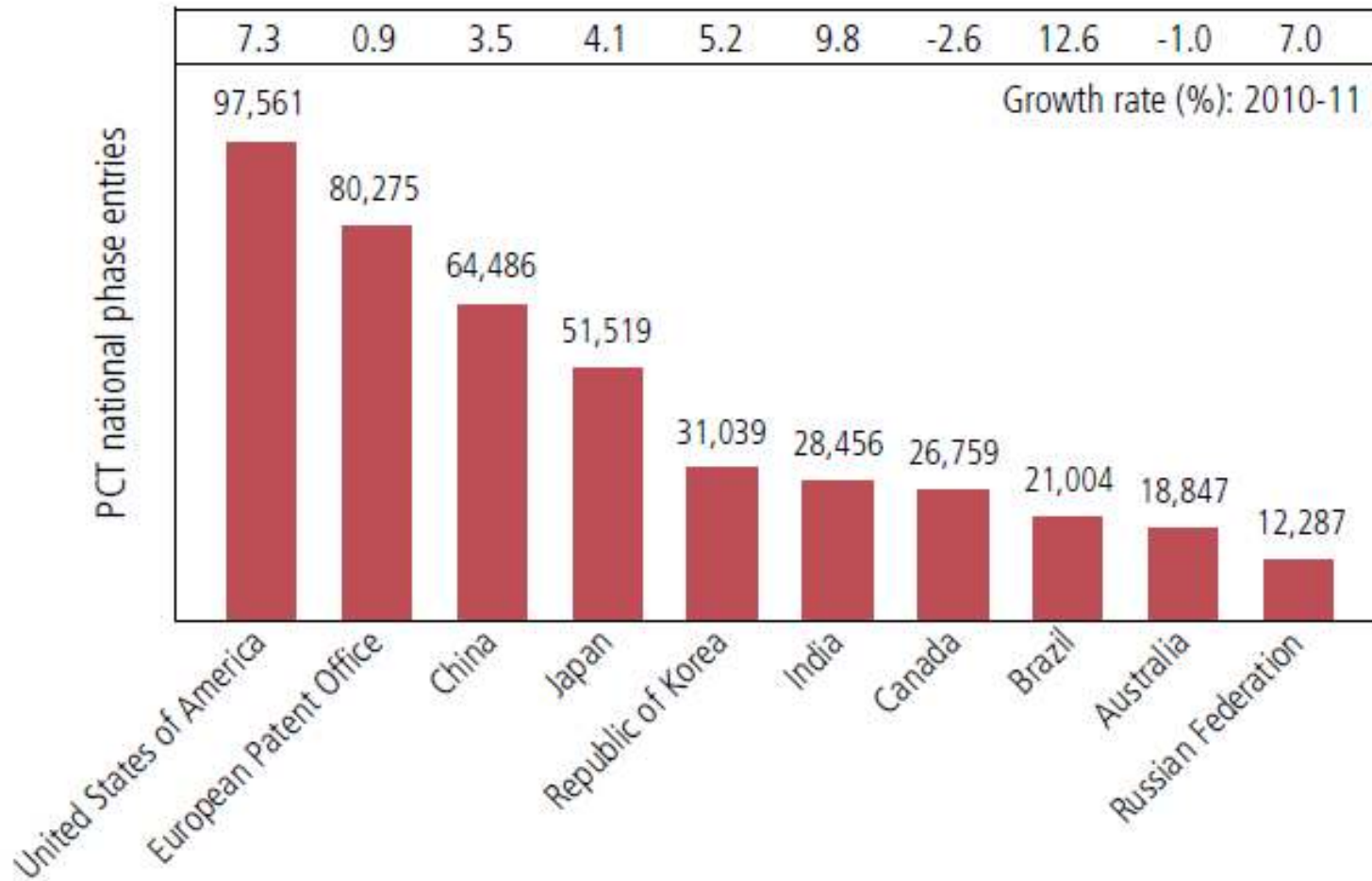
- Increases in National Phase Entries for all top 15 origins except Switzerland, Sweden and Australia.
- China witnessed the highest growth in National Phase Entries of 67.0%.

PCT National Phase Entries for Top 10 Middle-Income Origins in 2011



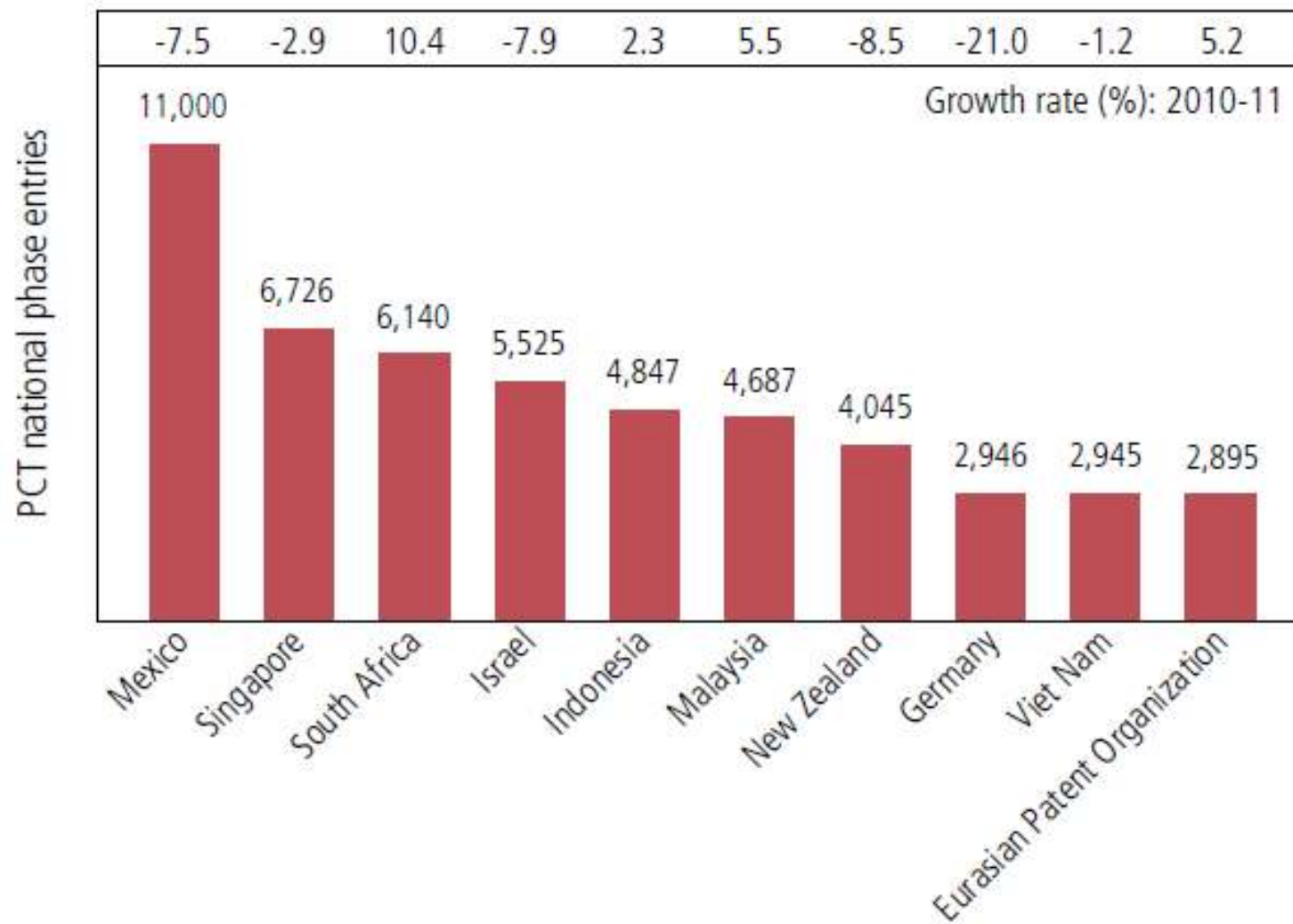
- PCT national phase entries originating from China, South Africa, Turkey, Mexico, Malaysia, Chile and Colombia grew by over 20% from 2010 to 2011.
- 47% of patent applications filed abroad by middle-income countries in 2011 were through the PCT system (45% in 2010)

PCT National Phase Entries for Top 10 Offices 2011

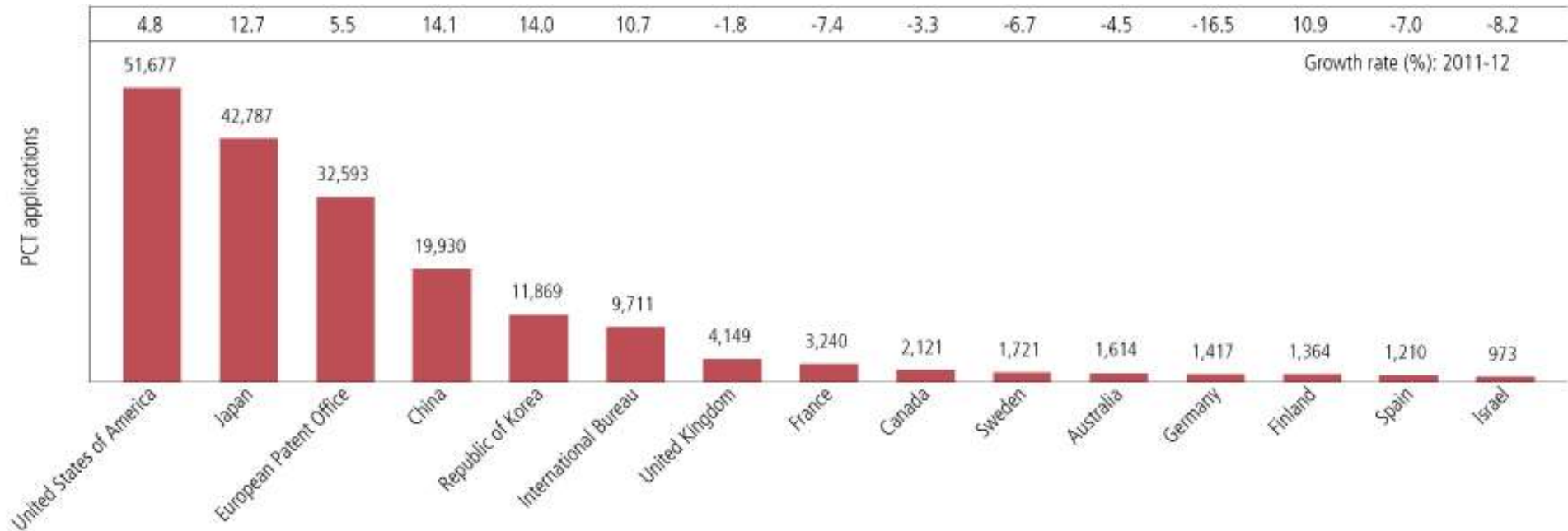


- USPTO most preferred office by National Phase Entries and had highest growth among the IP5 Offices (+ 7.3%).
- Brazil (+ 12.6%) and India (+ 9.8%) had highest growth rates among top 10 Offices.

PCT National Phase Entries for Next 10 Offices 2011

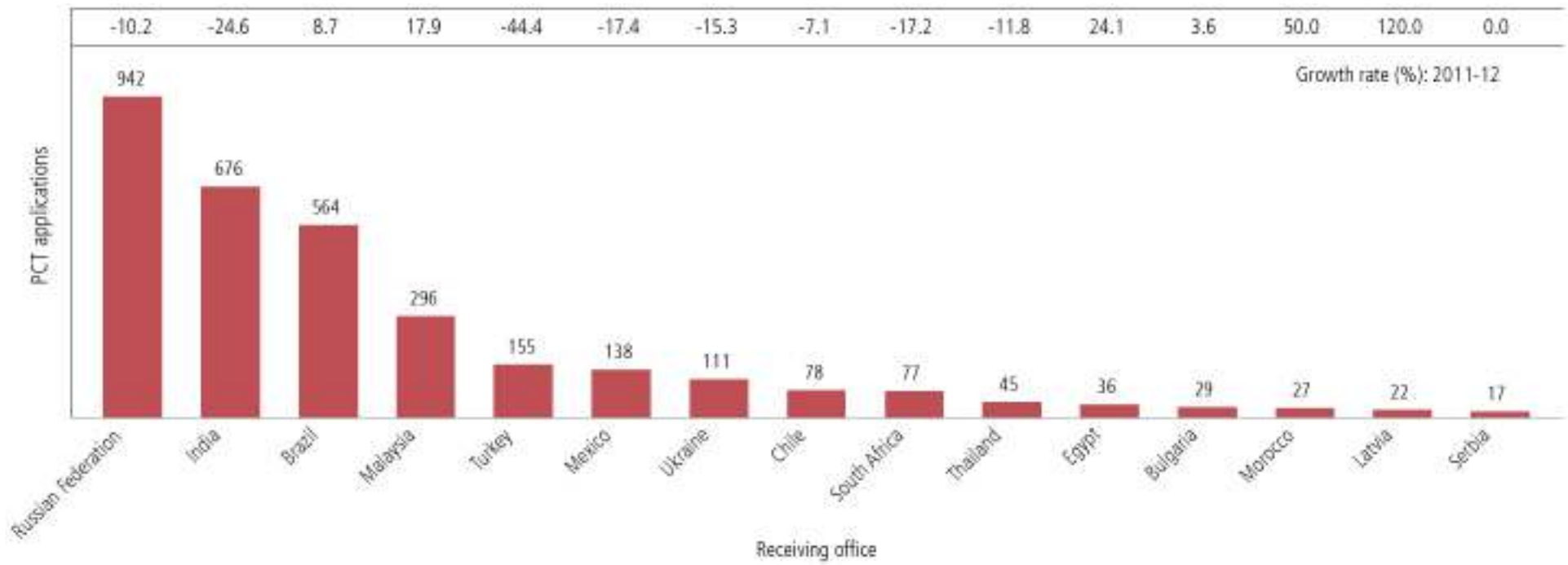


3) PCT Applications by Receiving Office



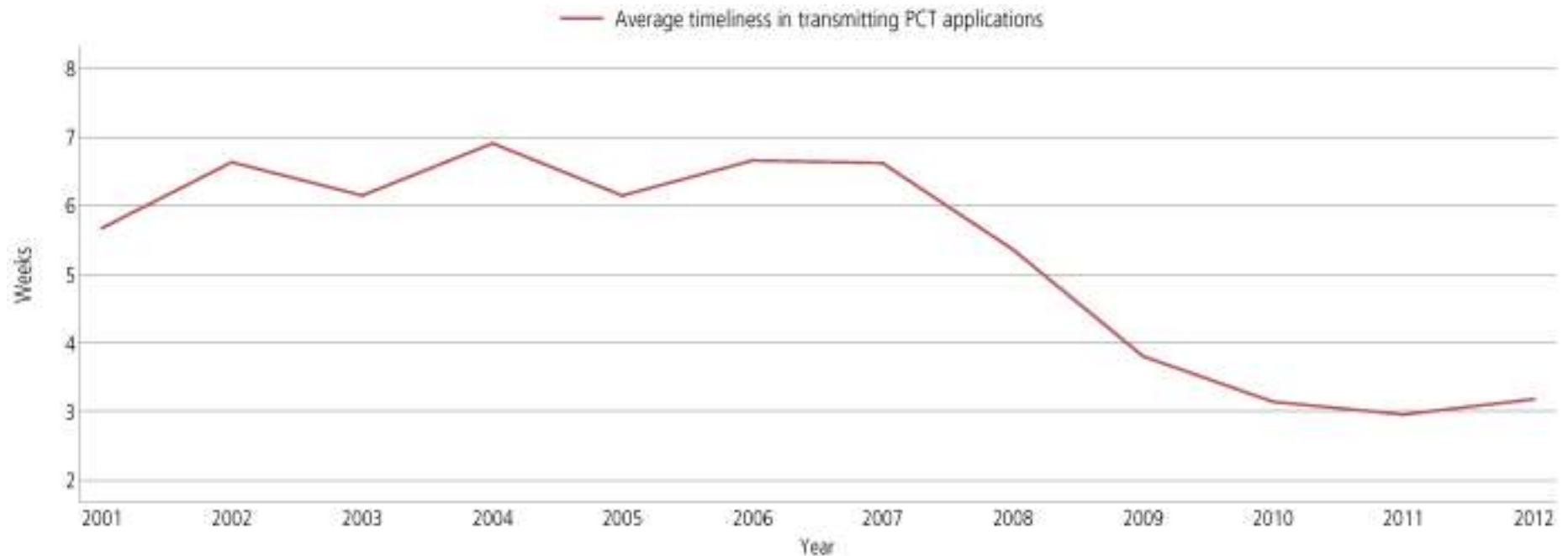
- Seven of the top 15 receiving offices received more applications in 2012 compared to 2011 (including all IP5 Offices and International Bureau).

PCT Applications by top 15 Receiving Offices of middle-income countries (excluding China)



- Eight of the above 15 receiving Offices received fewer PCT applications in 2012 compared to 2011.

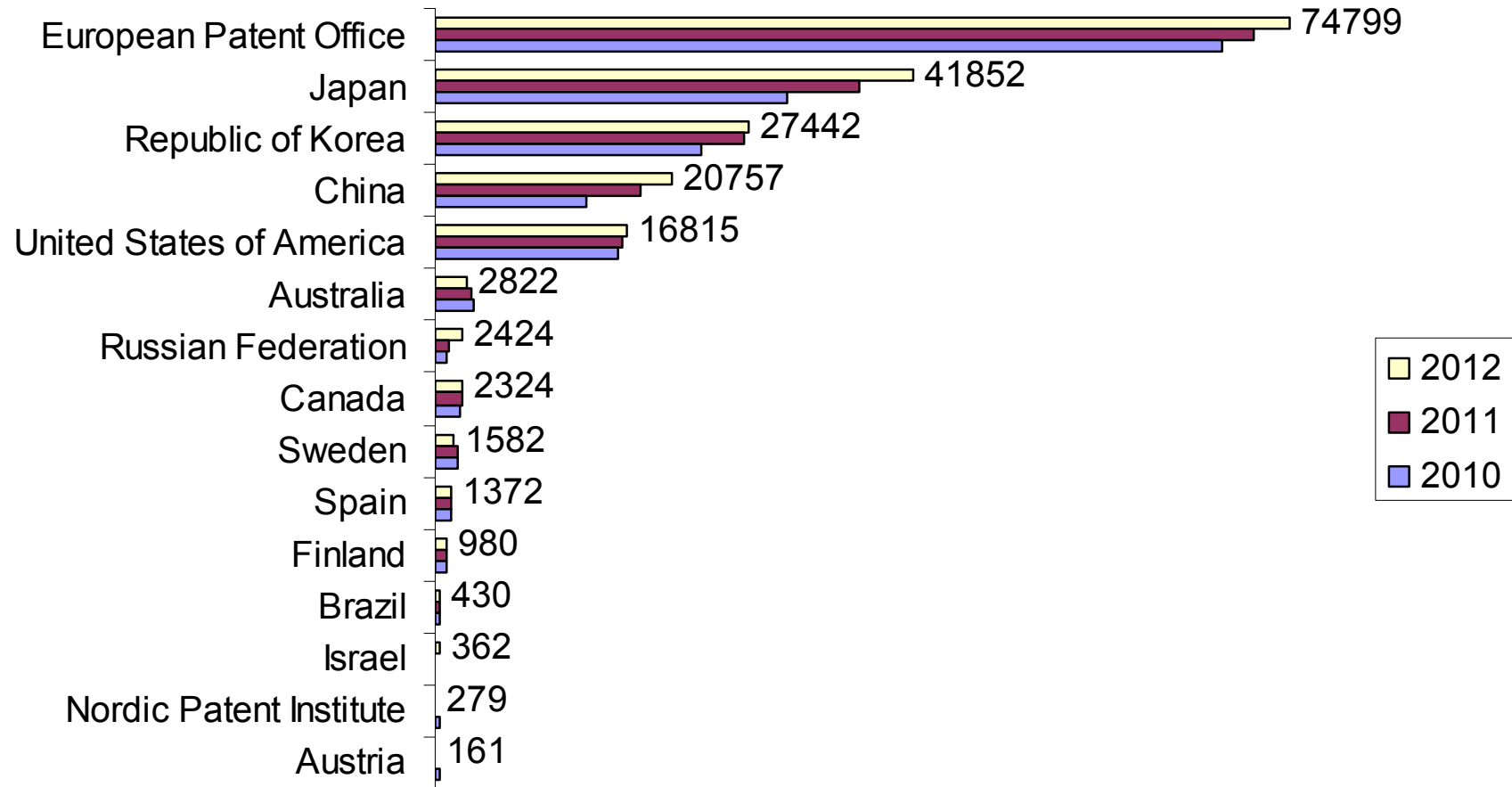
Receiving Offices: Timeliness of Transmitting PCT Applications to the International Bureau



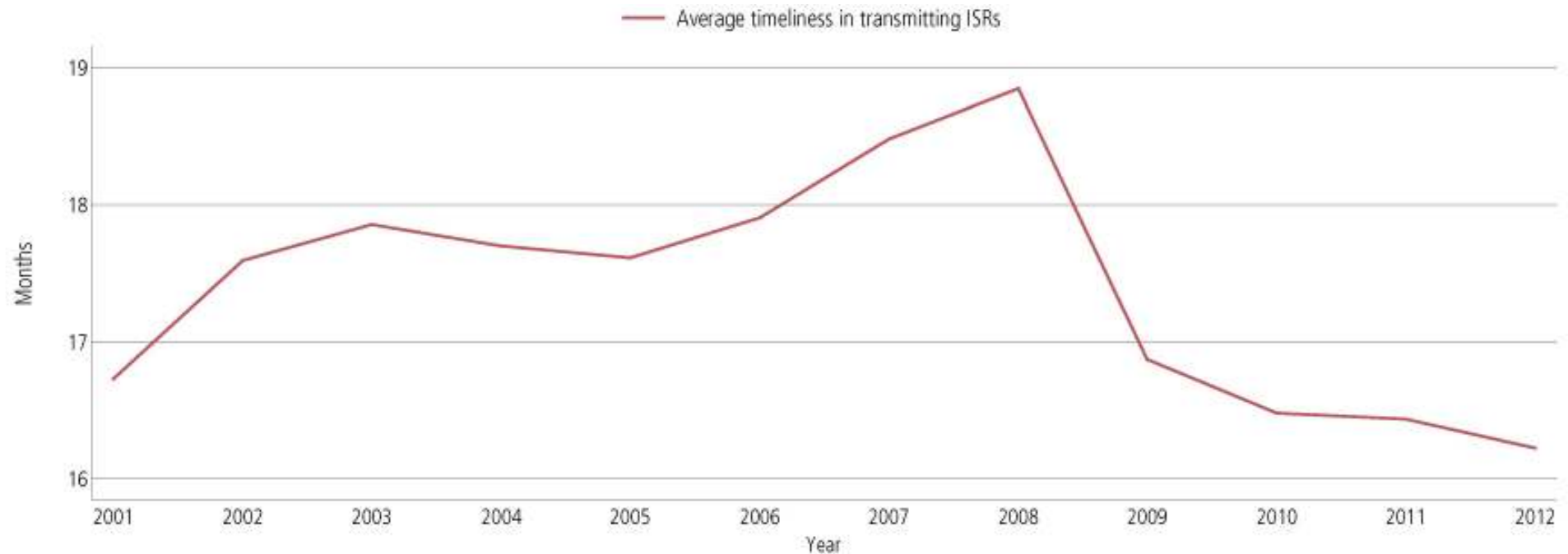
- Average transmission time between the international filing date and the date of receipt of the application from the receiving Office dropped from six to three weeks between 2007 and 2010 (graph excludes Rule 19.4 transmissions).
- 87.4% of PCT applications transmitted to the IB within 5 weeks in 2012 (down from 88.5% in 2011).

4) International Authorities

Distribution of International Search Reports by International Searching Authority

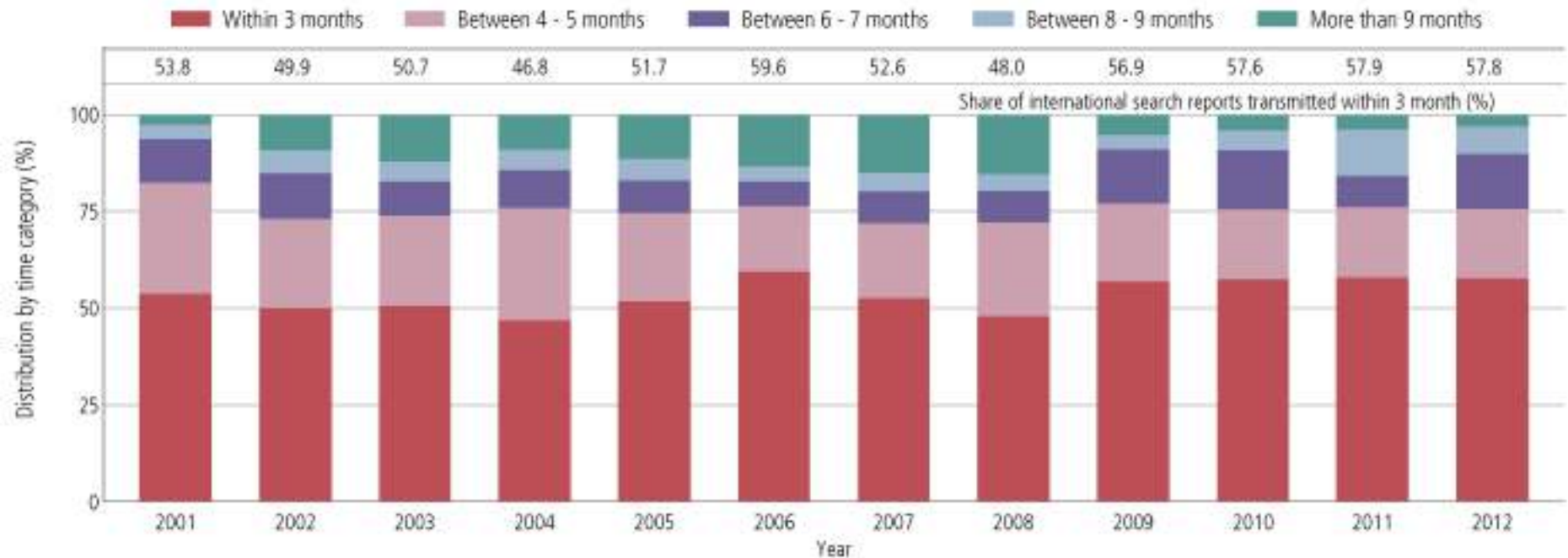


Average Timeliness in Transmitting ISRs to the IB from Priority Date of International Application



- Average time between the priority date and the receipt of the ISR by the IB was 16.2 months in 2012, the shortest since 2001.
- 69.4% of ISRs were received within 17 months in 2012 [68.3% in 2011].

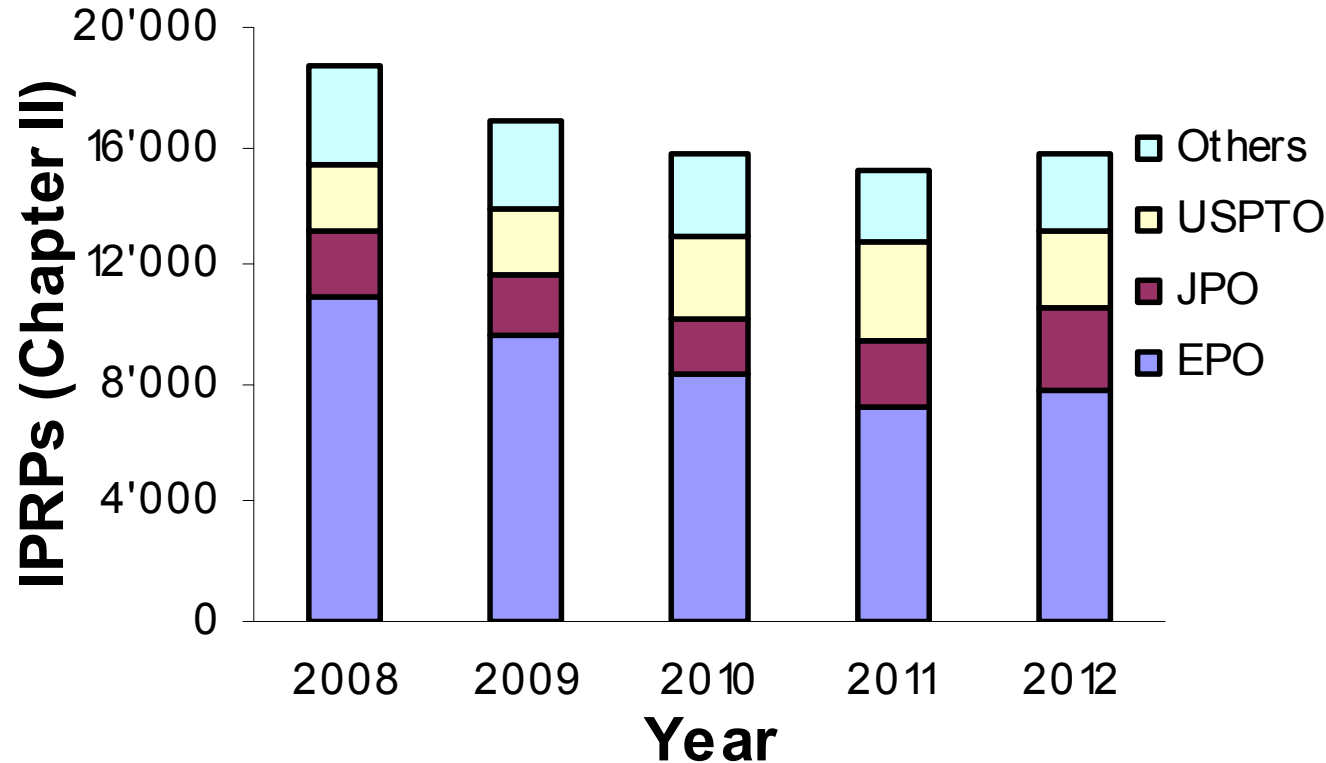
Timeliness in transmitting ISRs to the IB measured from Date of Receipt of Search Copy



Distribution of Supplementary International Search Requests by SISA

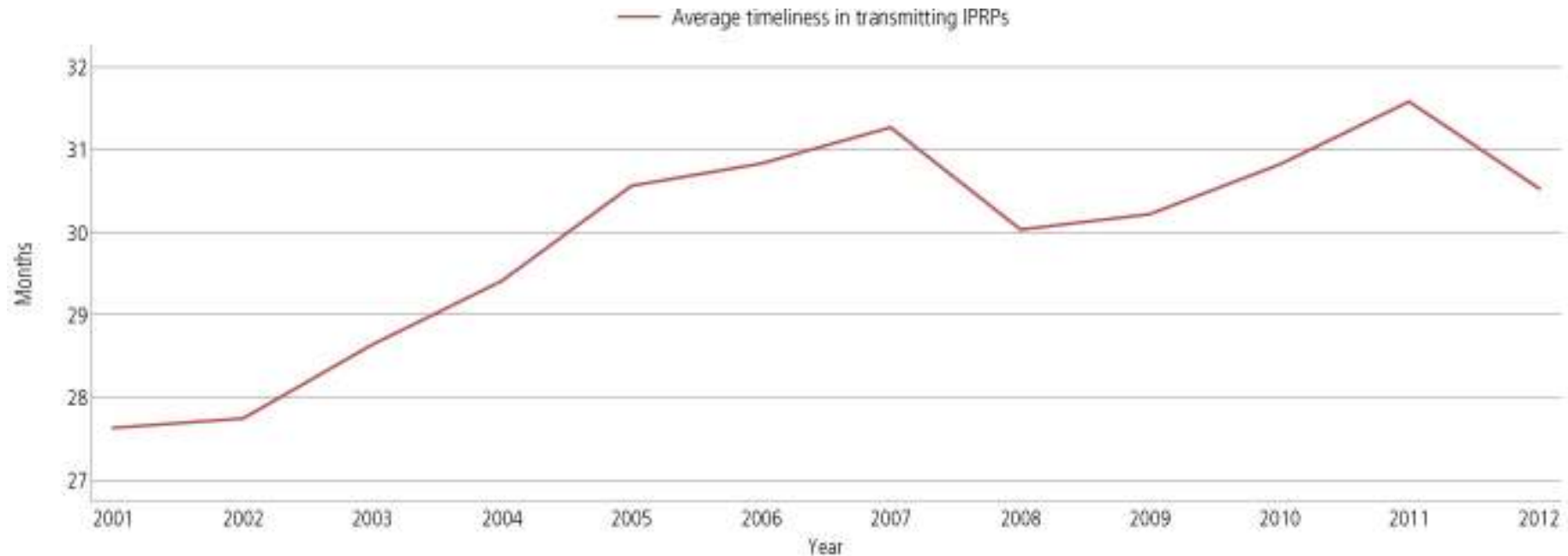
Supplementary International Searching Authority	2009	2010	2011	2012
Year	2009	2010	2011	2012
Total	24	41	41	46
Austria			1	2
European Patent Office		3	7	21
Nordic Patent Institute		1		3
Russian Federation	23	35	31	19
Sweden	2	2	2	
Finland				1

International Preliminary Examination Authorities



- Reports produced by IPEAs rose by 4.1% from 2011 to 2012 – first increase since modification to PCT national phase time limit came into force in 2002.
- For 2012, 49.3% of IPRPs (Chapter II) were produced by the EPO, 17.4% by the JPO, 16.7% by the USPTO and 16.6% by other International Authorities.

Average Timeliness in Transmitting IPRPs



- Average time taken to transmit IPRPs increased from 27.6 months in 2001 to 30.5 months in 2012. 68.4% of IPRPs transmitted within 28 months.

5) PCT-Patent Prosecution Highway

International Authority	Office of PCT National Phase Entry												Total
	US	JP	CN	EP	KR	CA	AU	RU	PH	SE	MX	ES	
Japan	427	769	181	196	96				8	5	3	1	1,686
Republic of Korea	964	12	205		49								1,230
European Patent Office	733	203											936
China	194	15			3			1					213
United States of America	129	11	14	25	15		5	9		0		1	209
Australia	104						6						110
Nordic Patent Institute	54	4											58
Canada						57							57
Sweden	41	5								0			46
Russian Federation	10		0									0	10
Austria	9												9
Finland	6	0						0				0	6
Spain	2	2						1			1		6
Israel	1												1
Total	2,674	1,021	400	221	163	57	11	11	8	5	4	2	4,577

Note: US (United States of America), JP (Japan), CN (China), EP (European Patent Office), KR (Republic of Korea), CA (Canada), AU (Australia), RU (Russian Federation), PH (Philippines), SE (Sweden), MX (Mexico), ES (Spain).

Source: WIPO, based on data from the JPO, March 2013

- 4,577 PCT-PPH requests in 2012 (total 8,570 till December 2012)
- In 2012, 38 PCT-PPH pilots were active, with the participation of 21 Offices, including 14 International Authorities.

Summary

- 194,400 Applications Filed (+6.6%) – 87.3% fully electronic
- 507,400 National Phase Entries (+4.2%)
- 54.9% Share of National Phase Entries in Worldwide Non-Resident Filings (+0.2)
- 4,577 PCT Patent Prosecution Highway Requests (+60.8%)

Further information:

2013 PCT Yearly Review

The International Patent System

WIPO Publication No:901E/2013

(English version on WIPO Website

French and Spanish available soon)

2012 World Intellectual Property Indicators

WIPO Publication No:941E/2012

Statistics on the PCT System

<http://www.wipo.int/ipstats/en/statistics/pct/>

Patent Prosecution Highway Portal Site

<http://www.jpo.go.jp/ppph-portal/index.htm>