

# WIPO



**PCT/MIA/I/2 Add. 2**  
**ORIGINAL:** English  
**DATE:** January 15, 1990

**WORLD INTELLECTUAL PROPERTY ORGANIZATION**  
GENEVA

**INTERNATIONAL PATENT COOPERATION UNION**  
**(PCT UNION)**

**MEETING OF INTERNATIONAL AUTHORITIES**  
**UNDER THE PCT**

**First Session**  
**Geneva, January 15 to 19, 1990**

CONSIDERATION OF REPORTS BY THE INTERNATIONAL AUTHORITIES  
CONCERNING THEIR PRACTICE AND EXPERIENCE AS  
INTERNATIONAL SEARCHING AND/OR  
PRELIMINARY EXAMINING AUTHORITIES

(ADDENDUM 2)

*Document compiled by the International Bureau*

The Annex to this document contains the report which has been submitted by the United States Patent and Trademark Office (Annex G) which was received after the publication of documents PCT/MIA/I/2 and the Addendum 1 relating thereto.

[Annex G follows]

**U.S. Report for Conference  
of International Searching  
Authorities and International  
Preliminary Examining Authorities  
at Geneva, Switzerland  
January 15-19, 1990**

The USPTO has been a party to the Patent Cooperation Treaty since June, 1978, and the volume of applications filed in the U.S. Receiving Office from 1978 to the present has increased from under 100, in fiscal year 1978, to just under 5,600 in fiscal year 1989. This rather significant increase in volume of filings has, with time, resulted in a dramatic increase in the size of the PCT International Division staff.

In 1978, we had a staff of three persons and our current staff includes some 55 persons who, in fiscal 1989, 1) processed nearly 5,600 applications in the Receiving Office; 2) some 1,959 Demands for Preliminary Examination; and 3) 4,355 national stage applications. The Division also transmitted some 3,469 search reports, over 1,000 examination reports, and 5,696 Record Copies. The division includes several branches staffed as follows:

- a) a Receiving Office Branch with a staff of 13, including a Supervisor who is also responsible for the International Searching Authority
- b) a Designated Office/Elected Office staff of 7, including a Supervisor who is also responsible for the Preliminary Examining Authority
- c) a Preliminary Examination staff of 3
- d) a support staff (clerical) of 17, including a Supervisor
- e) a legal staff of 9, including 4 attorney examiners, 3 paralegals and 2 legal technicians
- f) an International Searching Authority staff of 2, and
- g) an Administrative Office staff of 4, including a legally trained Administrator.

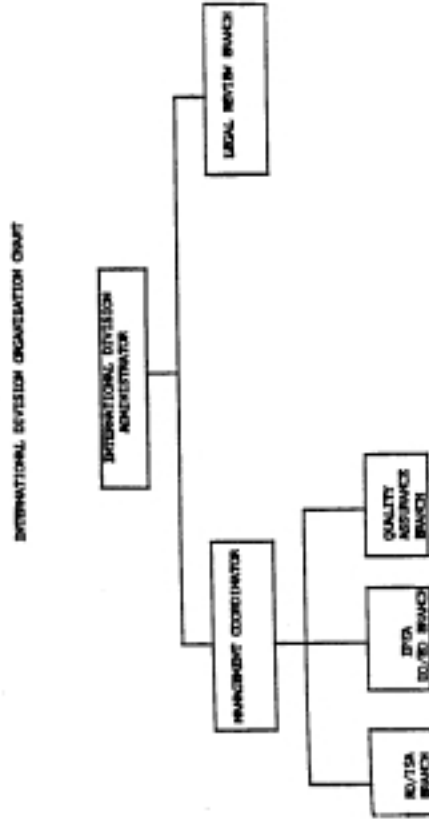
It should be pointed out that the search and examination phase are actually carried out by examiners under the Office of the Assistant Commissioner for Patents. Preliminary processing and review of the applications for compliance with the treaty, the regulations and our national stage filing requirements are

performed in the division which is under the Assistant Commissioner for Administration.

The legal staff has responsibility for all legal issues arising under the treaty and decides all petitions in both international and national stage applications. Additionally, the legal staff has several para-professionals who review all search reports, written opinions, final reports and other documents for accuracy and completeness before they are transmitted to the International Bureau.

We are presently involved in an automation project which we expect to be completed soon. This project will be of tremendous assistance to us in monitoring and tracking the movement of applications throughout the USPTO, and will afford us the ability to prepare application file jackets and various forms through the use of automation.

The International Division was reorganized in June, 1989 in an effort to improve the effectiveness of processing international and national stage applications by centralizing policy and administrative functions, providing a legal staff and establishing a comprehensive automated monitoring system. The reorganized division is schematically depicted as follows:



-3-

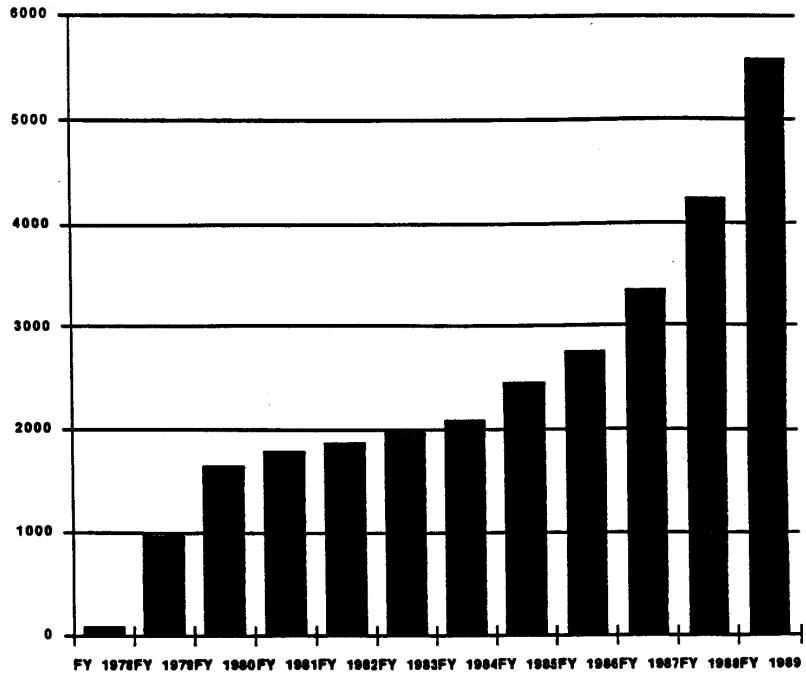
Space has been a significant and continuing concern of the division. We recently acquired additional space which now houses the Legal staff and the clerical support staff (Quality Assurance Branch). The clerical support staff will have the responsibility, in addition to supporting the work in the other branches, of typing all of the search reports, written opinions, final reports, and other documents generated by the examiners who perform the search and examination. This will centralize the typing responsibility and render more efficient, the administrative handling of Chapter I and Chapter II documents.

The increase in staff, the acquisition of additional space, and the automation effort will prepare the USPTO to manage more efficiently the existing workload and prepare us for the expected continuing increase in work volume.

Note...The reference to fiscal year herein refers to the USPTO year which runs from October 1 to September 30.

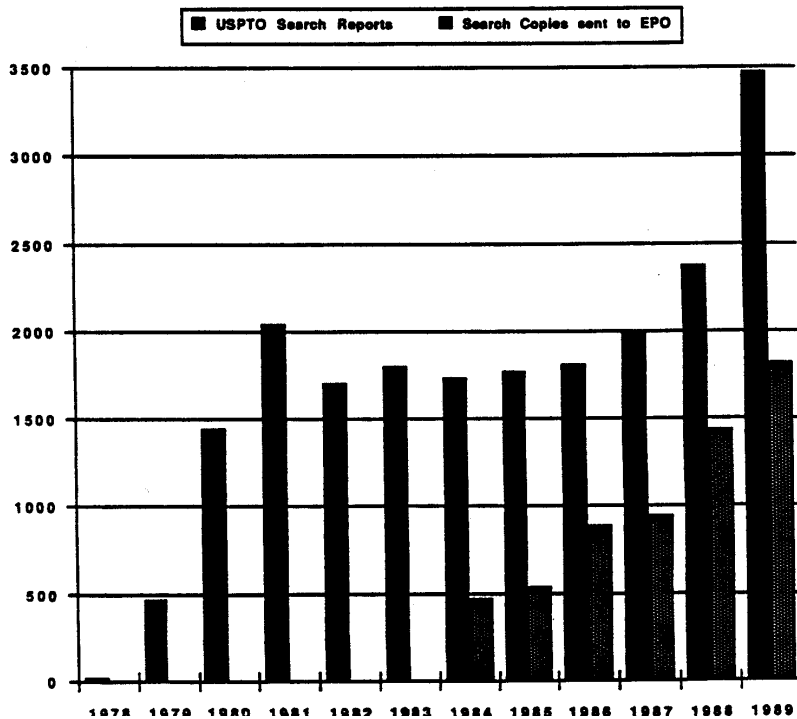
International Applications filed in the United States  
Receiving Office

Period	I.A. Appl. in RQ	% Change
FY 1978	91	
FY 1979	971	967.00%
FY 1980	1647	59.00%
FY 1981	1797	9.10%
FY 1982	1867	3.80%
FY 1983	1977	5.90%
FY 1984	2091	5.70%
FY 1985	2452	17%
FY 1986	2749	12.00%
FY 1987	3346	22%
FY 1988	4242	27%
FY 1989	5599	32%



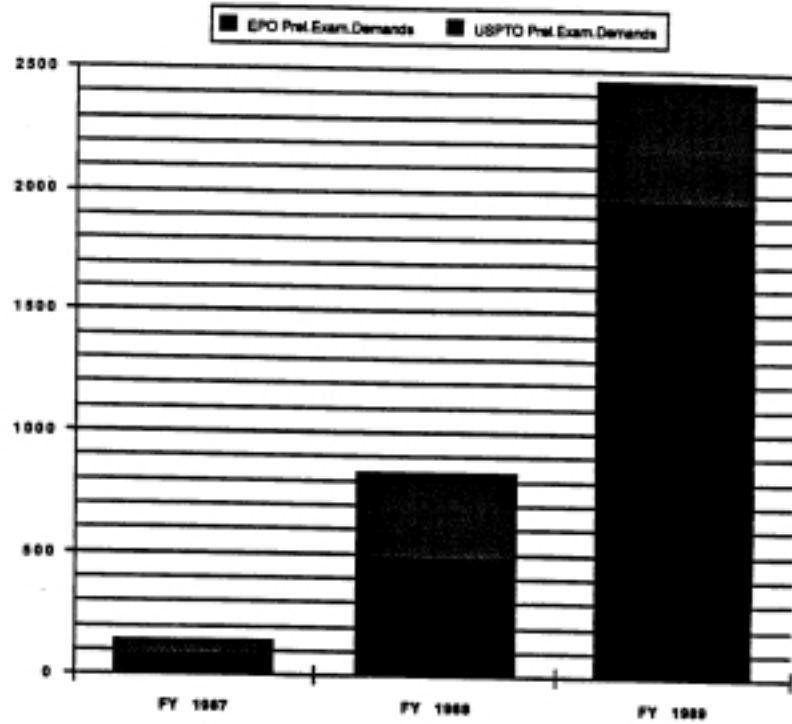
Search Reports prepared by US/ISA and  
Search Copies sent to EP/ISA

Period	USPTO Search Reports	Search Copies sent to EPO
1978	22	
1979	471	
1980	1442	
1981	2045	
1982	1705	
1983	1805	
1984	1732	472
1985	1770	546
1986	1808	895
1987	1986	951
1988	2374	1438
1989	3469	1818



Number of Demands filed

Period	USPTO Prel.Exam.Demands	EPO Prel.Exam.Demands
FY 1987	81	65
FY 1988	478	360
FY 1989	1959	500



Number of International applications in which the United States was designated and actually entered national phase

Period	DO/US Designated	Entered in USPTO
FY 1978		
FY 1979	1127	
FY 1980	2027	
FY 1981	2640	
FY 1982	2644	
FY 1983	2767	
FY 1984	3253	
FY 1985	4081	2341
FY 1986	4880	2904
FY 1987	5678	3626
FY 1988	6084	3454
FY 1989	6919	4355

