



WIPO | PCT

The International
Patent System



PCT Statistics

Meeting of International Authorities

Twenty-Fourth Session

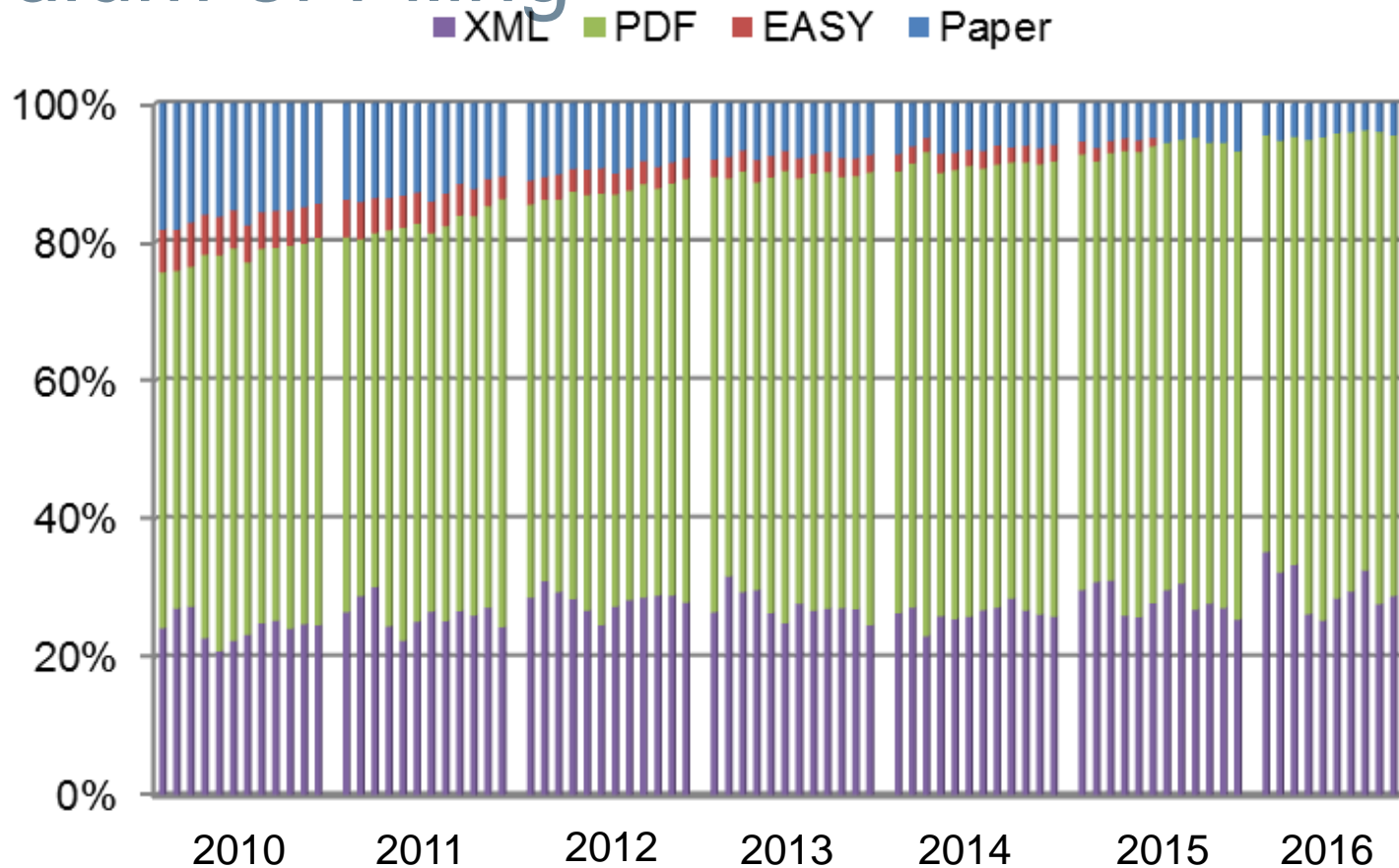
Reykjavík

February 8 to 10, 2017

Outline

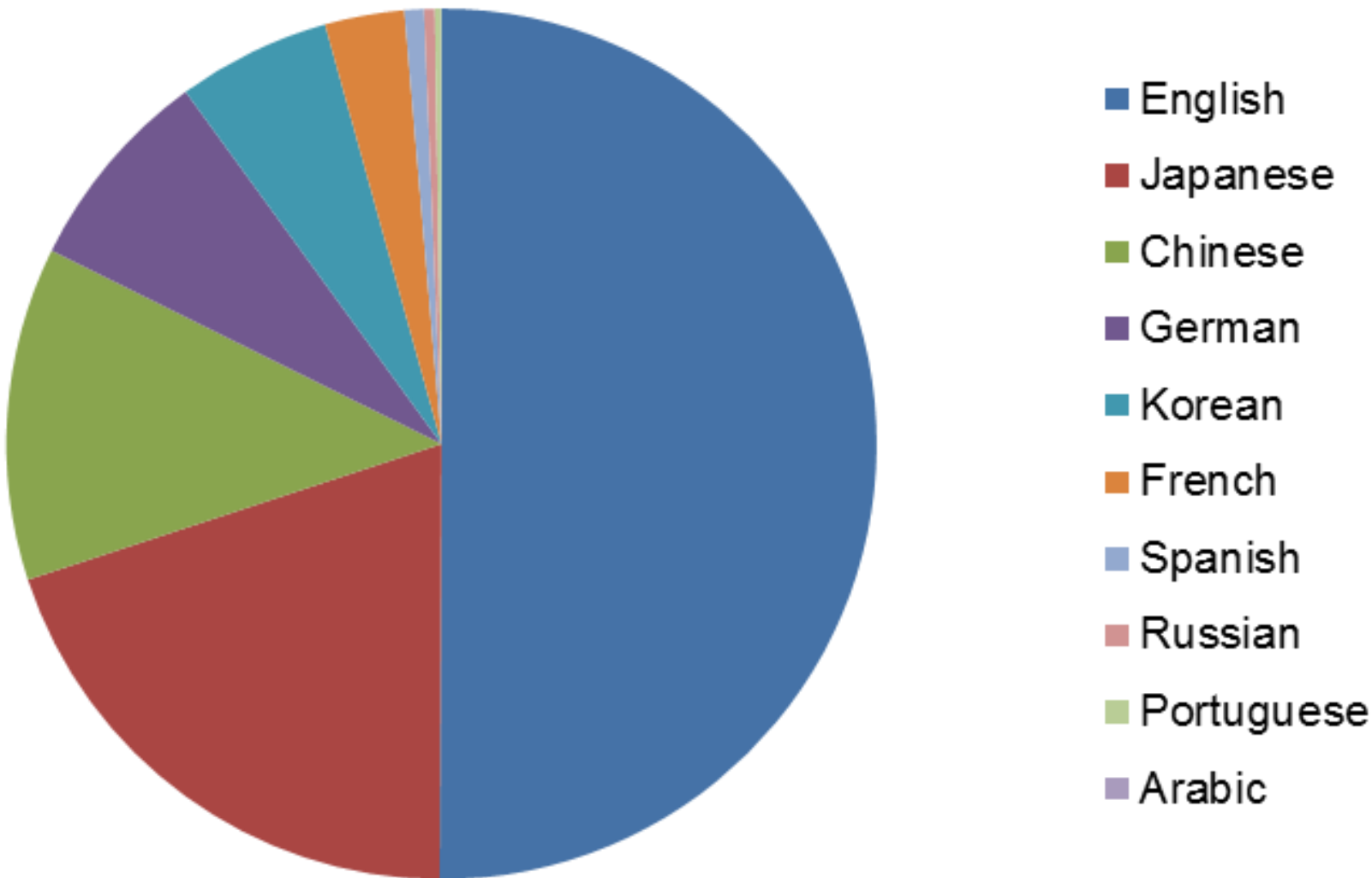
- International Applications Filed
 - Overall Trends and Forecasts
 - Medium of Filing
 - Languages
- National Phase Entries
- International Authorities
 - International Search
 - Supplementary International Search
 - International Preliminary Examination

Medium of Filing



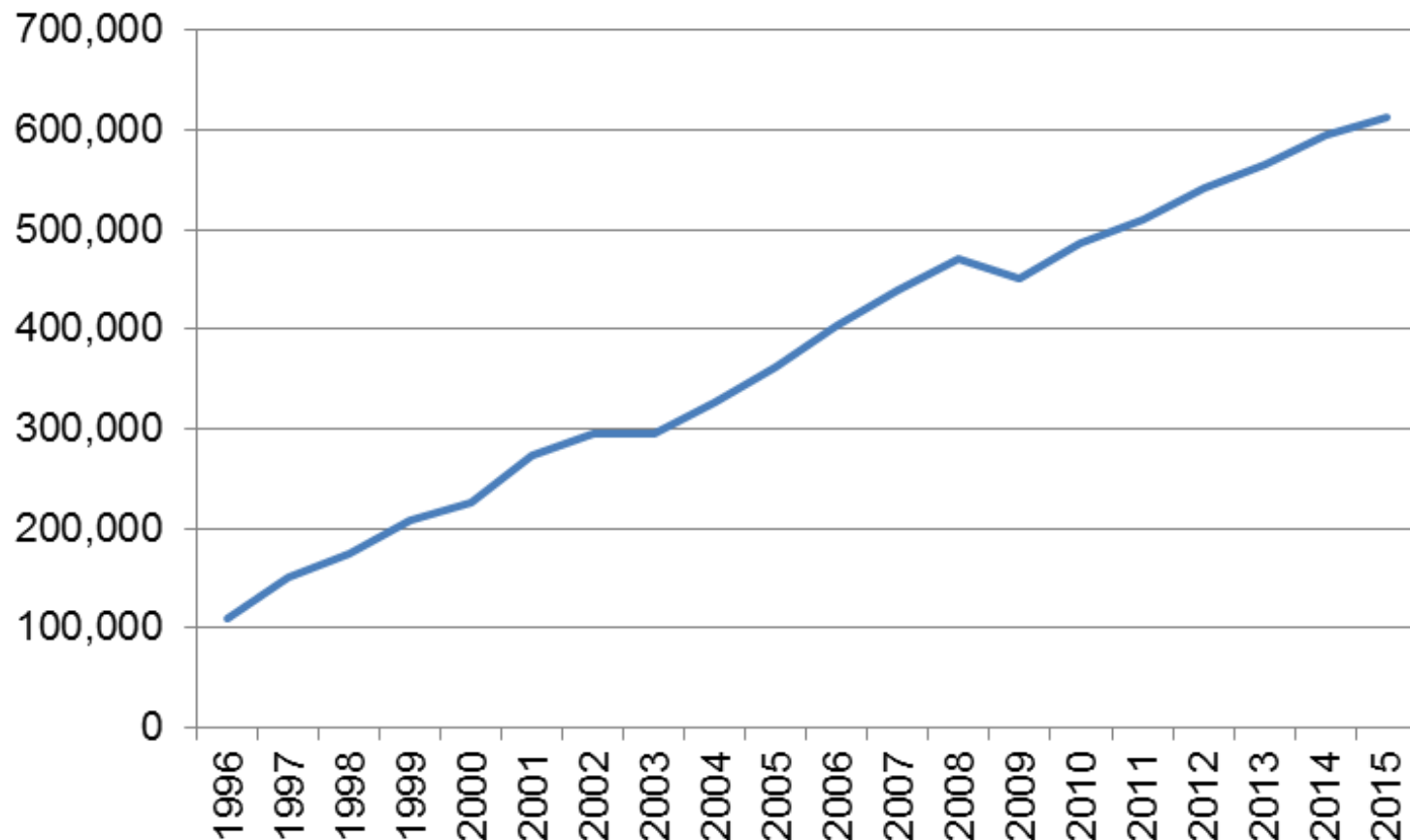
- Distribution in 2016 – 2015 distribution in parenthesis:
4.5% paper (5.6%),
95.4% (93.6%) fully electronic [PDF 65.6% (65.5%),
XML 29.9% (28.1%)]

Publication Languages in 2016



Source: WIPO statistics database. January 2017

PCT National Phase Entries



612,300 total national phase entries in 2015 (+2.75%)

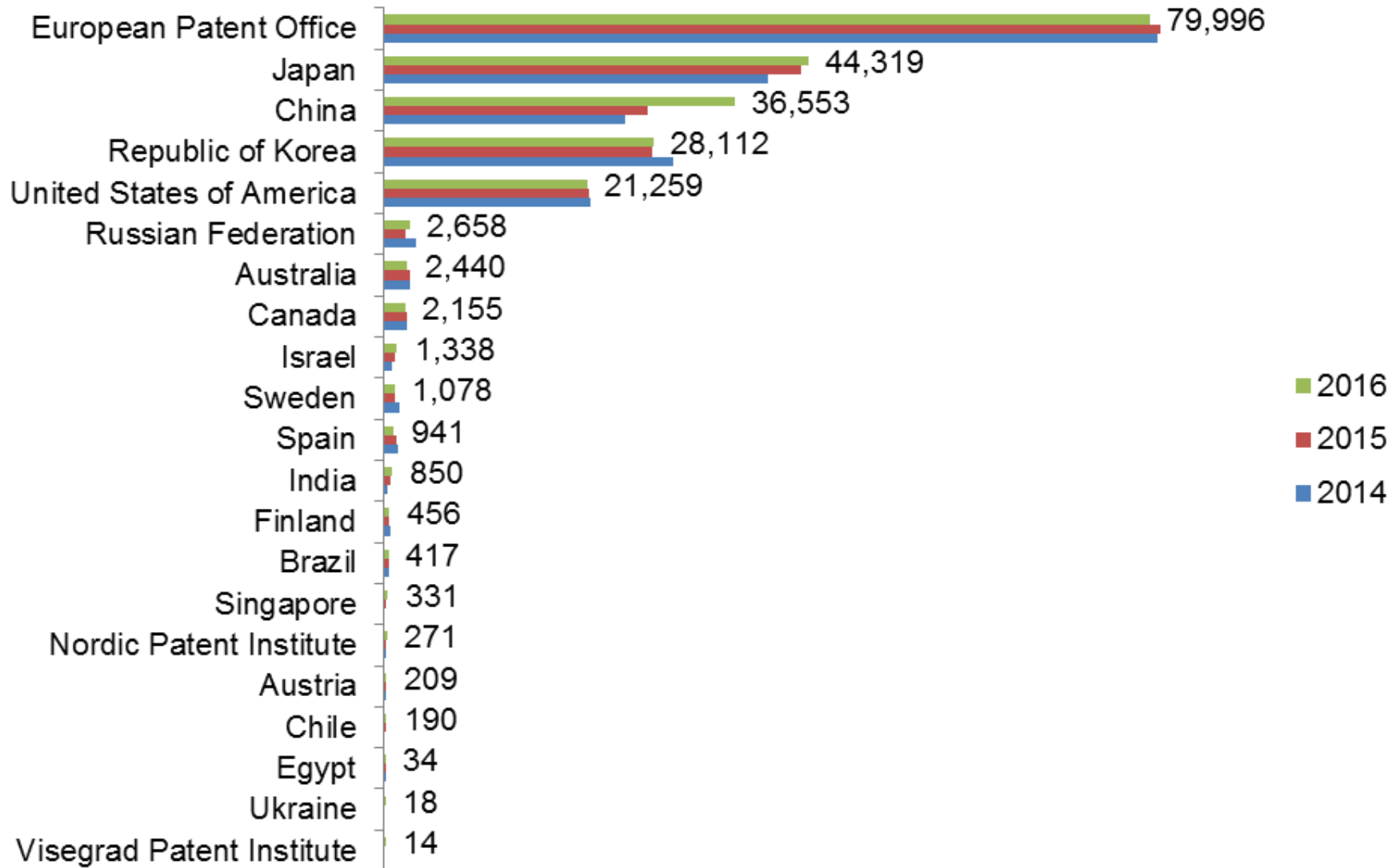
521,000 non-resident national phase entries in 2015 (+5.5%)

57.0% of all non-resident patent applications (57.1% in 2014)

International Authorities

- International Search Reports
 - Distribution by International Authority
 - Timeliness of Transmission to International Bureau
- Supplementary International Search Reports
- International Preliminary Examination Reports
 - Demand
 - Distribution by International Authority
 - Timeliness of Transmission to International Bureau

Distribution of ISRs established by ISA

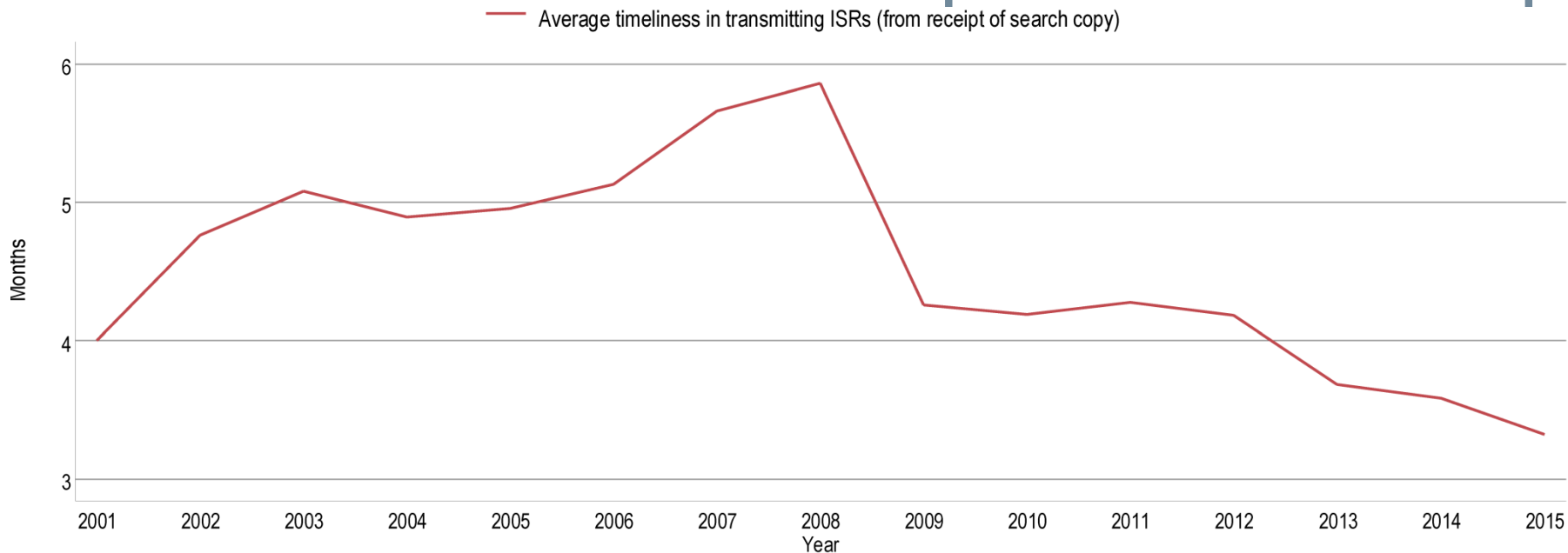


Data based on international filing year of application

Data for 2016 are incomplete

Source: WIPO statistics database. January 2017

Average Timeliness in transmitting ISRs to the IB from Date of Receipt of Search Copy

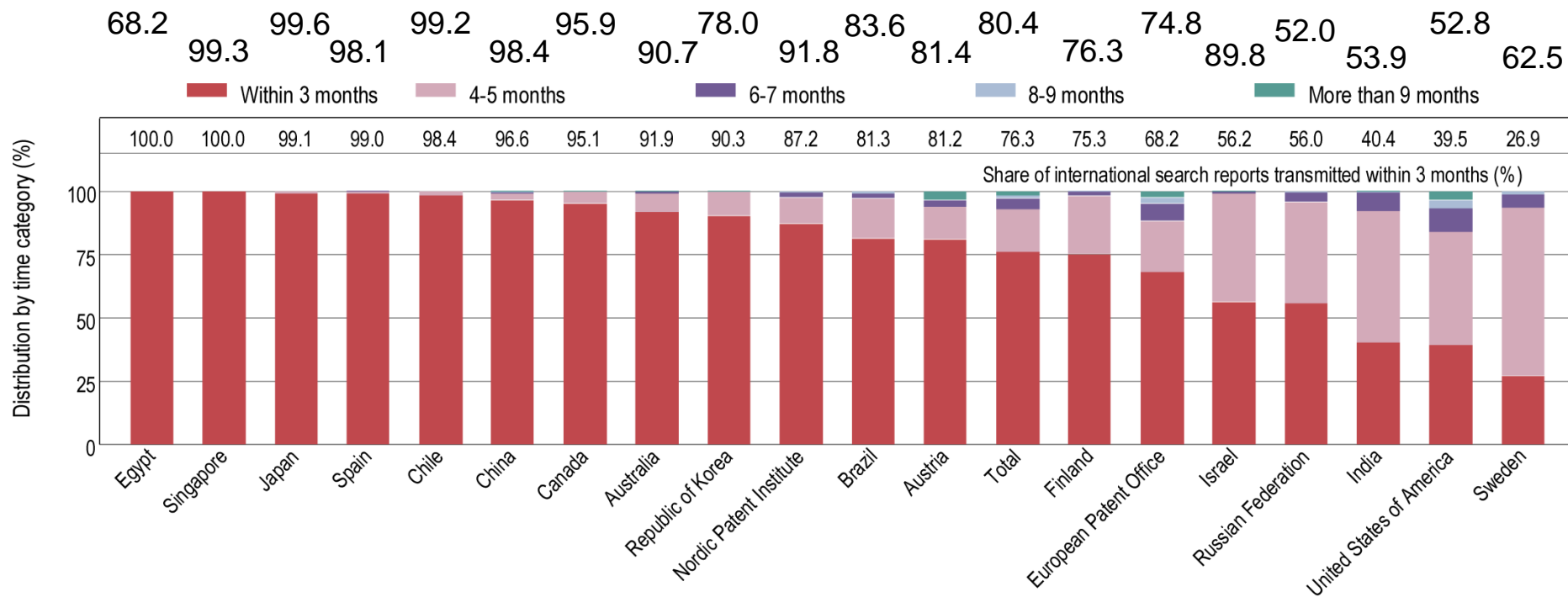


Source: WIPO statistics database, May 2016 and January 2017. Excludes cases where the time limit of 9 months from the priority date applies.

- Average timeliness in transmitting ISRs to the IB was 3.3 months in 2015 - shortest time since 2001
- 76.3% of PCT applications transmitted to IB within 3 months from date of receipt of search copy in 2015 – expected to rise to about 80% for 2016

Timeliness in Transmitting ISRs to the IB measured from Date of Receipt of Search Copy by ISA for 2015

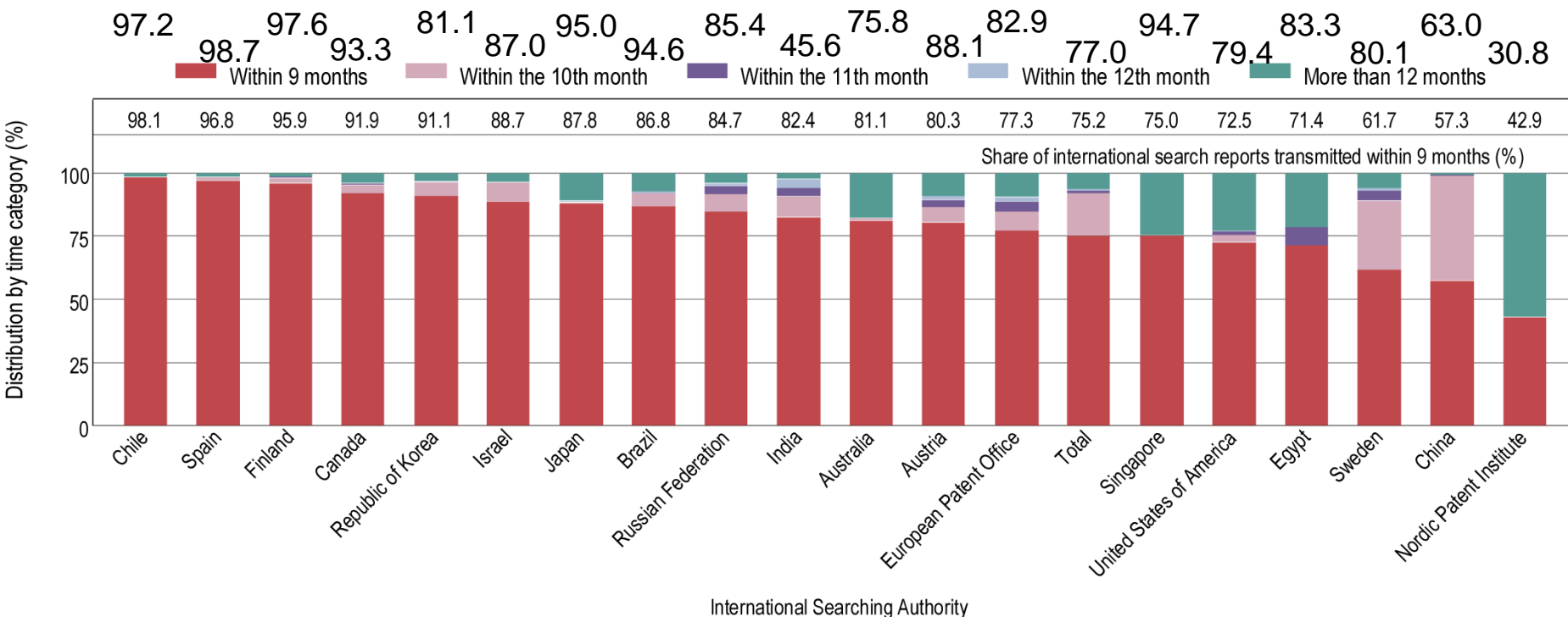
Provisional share transmitted within 3 months for 2016



Source: WIPO statistics database, May 2016 and January 2017. Excludes cases where the time limit of 9 months from the priority date applies.

Timeliness in Transmitting ISRs to the IB measured from Priority Date by ISA for 2015

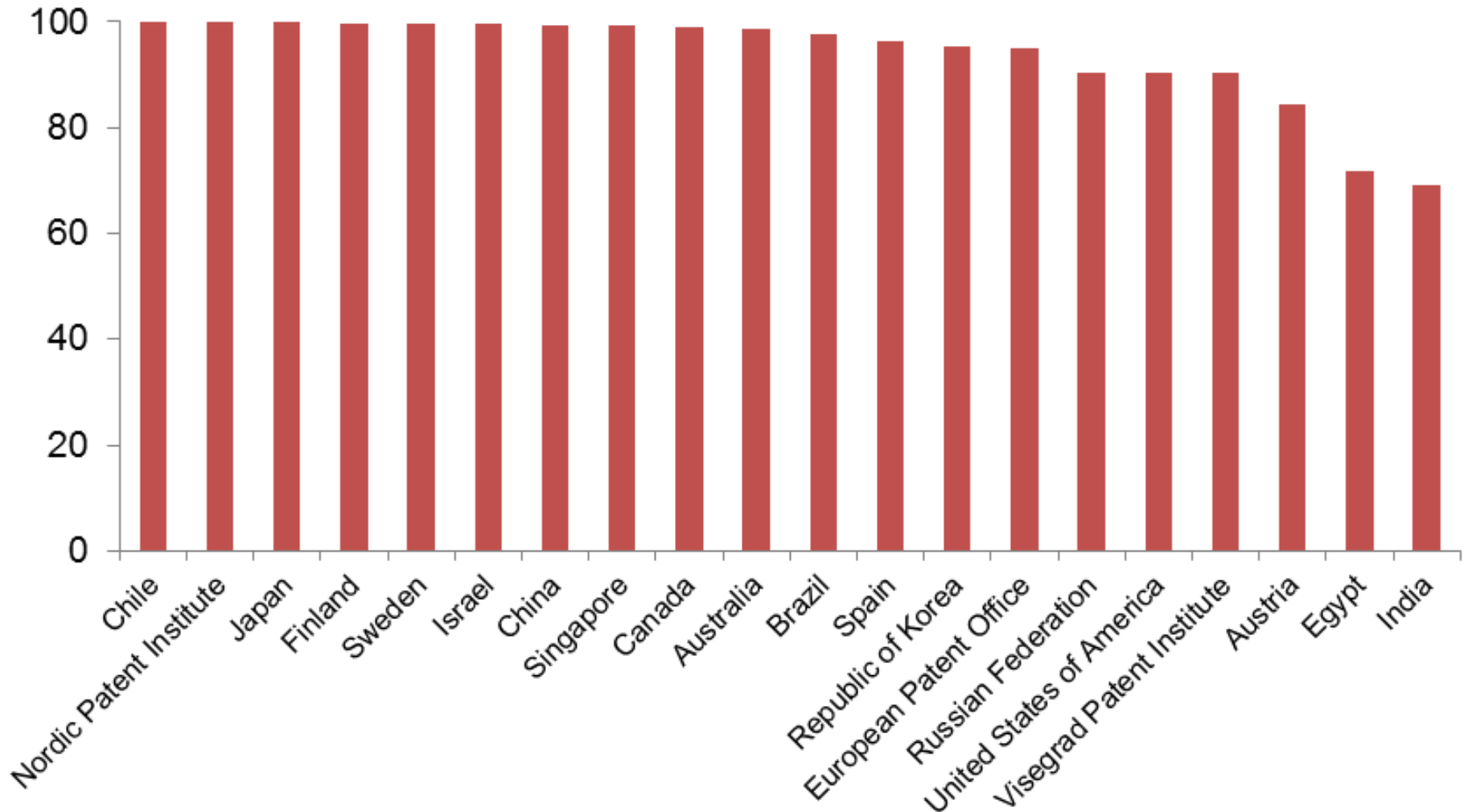
Provisional share transmitted within 9 months for 2016



Source: WIPO statistics database, May 2016. Excludes cases where the time limit of 3 months from receipt of search copy applies.

75.2% of PCT applications transmitted to IB within 9 months from priority date in 2015 – expected to rise to about 77% for 2016

PCT A1 Publication Percentage by ISA in 2016



Overall Percentage of A1 International Publications = 96.2%
(93.4% in 2015)

Source: WIPO statistics database January 2017.

Supplementary International Search Requests

| | 2012 | 2013 | 2014 | 2015 | 2016 |
|-------------------------|-------------|-------------|-------------|-------------|-------------|
| Total | 46 | 67 | 109 | 64 | 47 |
| Austria | 2 | 2 | 2 | 2 | |
| European Patent Office | 21 | 30 | 61 | 40 | 44 |
| Finland | 1 | | | | |
| Nordic Patent Institute | 3 | | | | |
| Russian Federation | 19 | 32 | 46 | 22 | 2 |
| Singapore | | | | | 1 |
| Sweden | | 3 | | | |

Source: WIPO statistics database January 2017.

International Preliminary Examination Demands

| IPEA | 2010 | 2011 | 2012 | 2013 | 2014 | 2015 | 2016 | 2016 (%) | 2015 (%) |
|--------------------------|-------|-------|-------|-------|-------|-------|-------|----------|----------|
| Total | 13908 | 13745 | 14256 | 13360 | 14116 | 14480 | 13705 | | |
| Australia | 745 | 780 | 753 | 644 | 632 | 634 | 567 | 4.14 | 4.38 |
| Austria | 36 | 17 | 14 | 18 | 10 | 3 | 9 | 0.07 | 0.02 |
| Brazil | 7 | 38 | 43 | 41 | 52 | 44 | 47 | 0.34 | 0.30 |
| Canada | 272 | 270 | 253 | 266 | 252 | 278 | 191 | 1.39 | 1.92 |
| Chile | | | | | | 2 | 6 | 0.04 | 0.01 |
| China | 362 | 421 | 475 | 385 | 375 | 388 | 319 | 2.33 | 2.68 |
| Egypt | | | | | 3 | 2 | | 0.00 | 0.01 |
| European Patent Office | 7918 | 7395 | 7763 | 7747 | 8340 | 8681 | 8796 | 64.18 | 59.95 |
| Finland | 123 | 125 | 106 | 91 | 105 | 77 | 66 | 0.48 | 0.53 |
| India | | | | | 6 | 23 | 27 | 0.20 | 0.16 |
| Israel | | | 1 | 29 | 54 | 87 | 73 | 0.53 | 0.60 |
| Japan | 2121 | 2446 | 2661 | 2291 | 2251 | 2119 | 1918 | 13.99 | 14.63 |
| Nordic Patent Institute | 40 | 40 | 44 | 33 | 42 | 55 | 28 | 0.20 | 0.38 |
| Republic of Korea | 271 | 223 | 299 | 253 | 236 | 207 | 175 | 1.28 | 1.43 |
| Russian Federation | 76 | 83 | 118 | 78 | 73 | 76 | 61 | 0.45 | 0.52 |
| Singapore | | | | | | | 58 | 0.42 | 0.00 |
| Spain | 123 | 120 | 84 | 81 | 82 | 65 | 47 | 0.34 | 0.45 |
| Sweden | 353 | 343 | 330 | 223 | 291 | 256 | 164 | 1.20 | 1.77 |
| Ukraine | | | | | | | 3 | 0.02 | 0.00 |
| United States of America | 1461 | 1444 | 1312 | 1180 | 1312 | 1483 | 1150 | 8.39 | 10.24 |

2016 figures are incomplete

Source: WIPO statistics database. January 2017

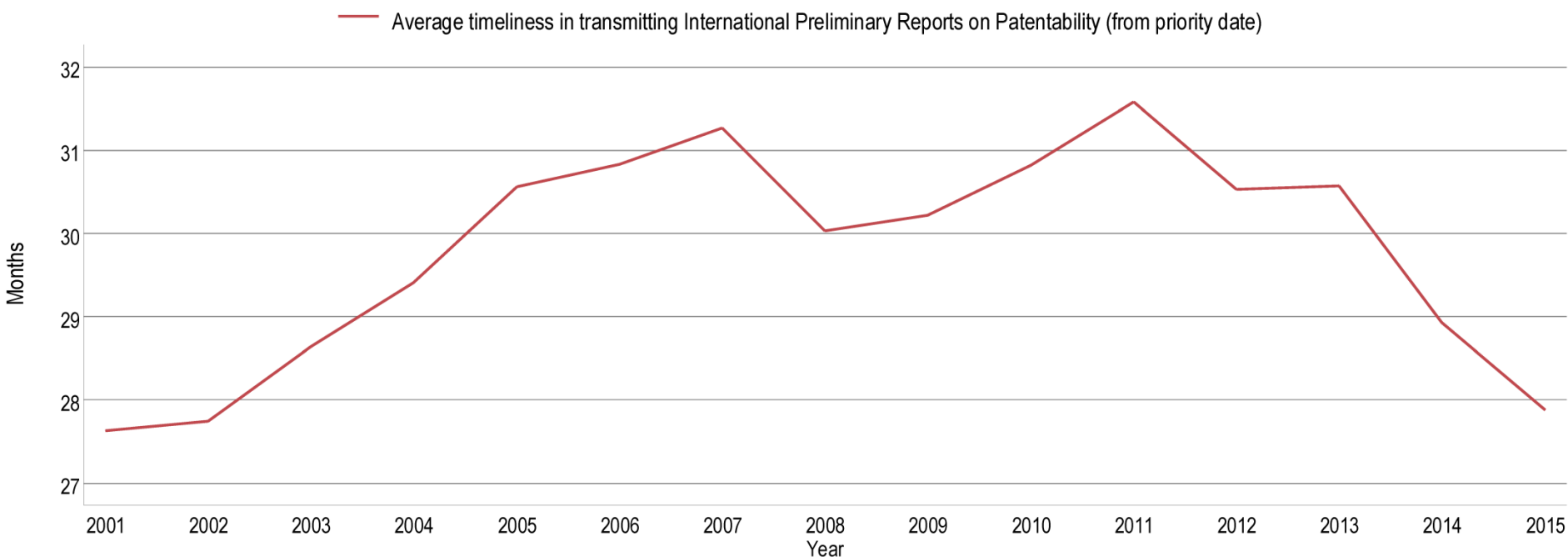
International Preliminary Examination Reports

| IPEA | 2010 | 2011 | 2012 | 2013 | 2014 | 2015 | 2016 | 2016 (%) | 2015 (%) |
|--------------------------|-------|-------|-------|-------|-------|-------|-------|----------|----------|
| Total | 15672 | 15090 | 15719 | 14694 | 13733 | 15633 | 14379 | | |
| Australia | 850 | 701 | 818 | 653 | 640 | 617 | 598 | 4.16 | 3.95 |
| Austria | 61 | 28 | 14 | 28 | 16 | 6 | 4 | 0.03 | 0.04 |
| Brazil | | 15 | 45 | 47 | 48 | 43 | 47 | 0.33 | 0.28 |
| Canada | 258 | 184 | 360 | 255 | 249 | 291 | 232 | 1.61 | 1.86 |
| Chile | | | | | | | 5 | 0.03 | 0.00 |
| China | 394 | 340 | 450 | 433 | 335 | 419 | 381 | 2.65 | 2.68 |
| Egypt | | | | | 1 | 4 | | 0.00 | 0.03 |
| European Patent Office | 8264 | 7177 | 7745 | 7305 | 7639 | 9058 | 9115 | 63.39 | 57.94 |
| Finland | 139 | 122 | 115 | 91 | 104 | 104 | 56 | 0.39 | 0.67 |
| India | | | | | | 6 | 25 | 0.17 | 0.04 |
| Israel | | | | 9 | 40 | 79 | 70 | 0.49 | 0.51 |
| Japan | 1905 | 2206 | 2741 | 2470 | 2232 | 2478 | 2022 | 14.06 | 15.85 |
| Nordic Patent Institute | 34 | 40 | 37 | 48 | 41 | 45 | 34 | 0.24 | 0.29 |
| Republic of Korea | 308 | 248 | 254 | 253 | 259 | 239 | 208 | 1.45 | 1.53 |
| Russian Federation | 62 | 67 | 76 | 123 | 93 | 68 | 71 | 0.49 | 0.43 |
| Singapore | | | | | | | 26 | 0.18 | 0.00 |
| Spain | 109 | 148 | 106 | 85 | 76 | 66 | 58 | 0.40 | 0.42 |
| Sweden | 409 | 356 | 332 | 249 | 251 | 295 | 195 | 1.36 | 1.89 |
| United States of America | 2879 | 3458 | 2626 | 2645 | 1709 | 1815 | 1232 | 8.57 | 11.61 |

2016 figures are incomplete

Source: WIPO statistics database. January 2017

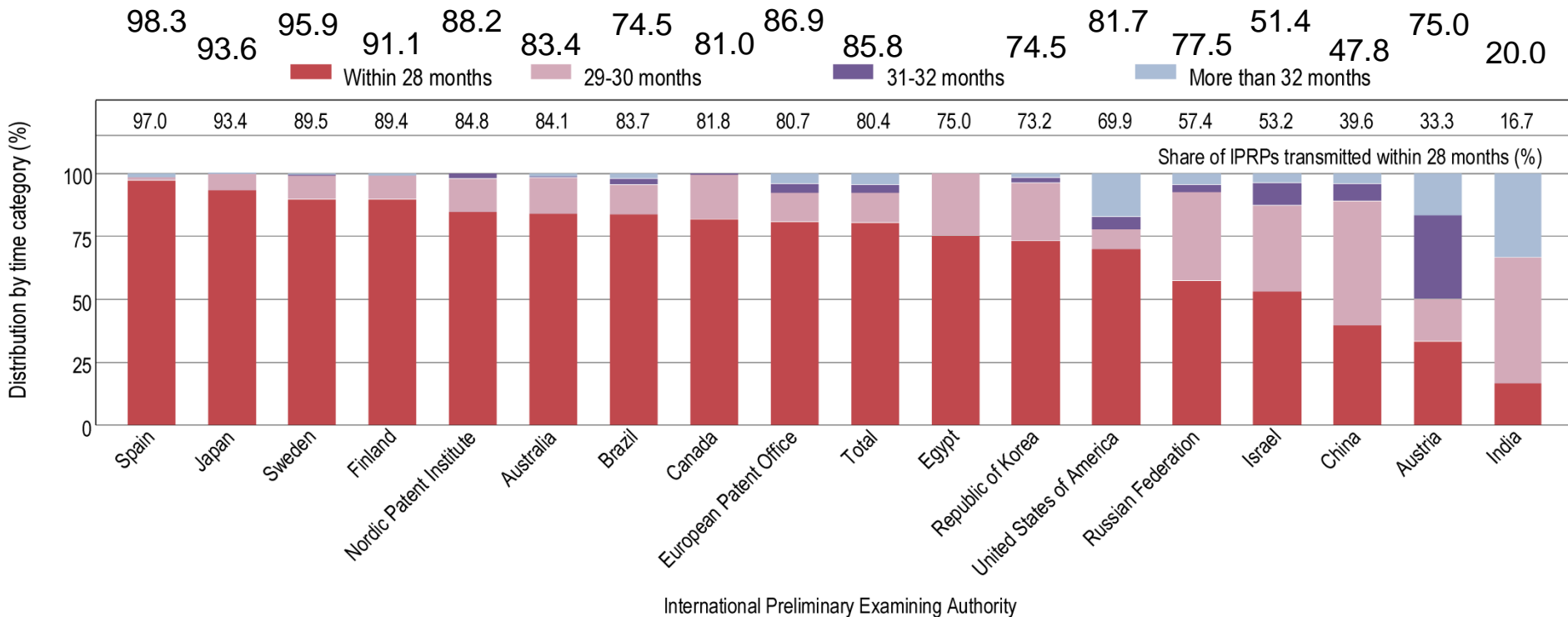
Average Timeliness in transmitting IPRPs



- Average time in transmitting IPRPs fell to 27.9 months in 2015, similar to level observed in 2001
- 80.4% of all IPRPs were transmitted to the IB within 28 months of priority date in 2015 (expected to rise to about 85% for 2016)

Timeliness in Transmitting IPRPs by IPEA in 2015

Provisional share transmitted within 28 months for 2016



Timeliness calculated as time elapsed between priority date and date on which International Bureau receives IPRP form the IPEA.

Further information:

2016 PCT Yearly Review

The International Patent System

WIPO Publication No. 901E/2016

2016 World Intellectual Property Indicators

WIPO Publication No. 941E/2016

WIPO IP Statistics Data Center

<http://www.wipo.int/ipstats/en/>