

**WIPO | PROOF**

Trusted Digital  
Evidence

# Contents

1. What is WIPO PROOF?
2. Key Benefits of WIPO PROOF
3. Uses for WIPO PROOF
4. Appendix



# What is WIPO PROOF?

- **Proves existence of a digital file**  
at a specific point in time.
- **Public Key Infrastructure (PKI) technology**  
electronic signed certification; acts like a digital notary
- **Tamper-proof**
- **Trusted**  
WIPO is a trusted Time Stamping Authority (TSA), which provides important backing.

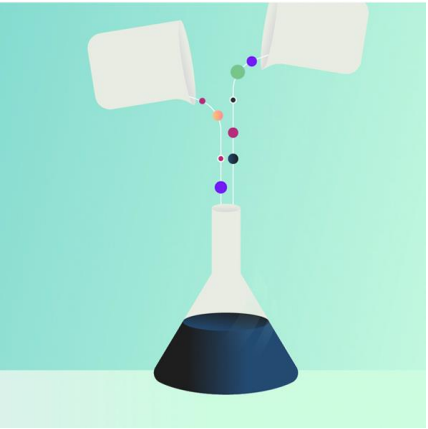


# What are the key benefits of WIPO PROOF?

- **Valid evidence**  
can be used in legal disputes
- **Pre-empts unlawful behaviour**  
signals that safeguarding measures are in place
- **Affordable**  
only 20 CHF, with 5-years of token storage
- **Worldwide recognition**  
backed by WIPO's over 130 years of experience and trustworthiness
- **Confidential**



# Uses of WIPO PROOF



## Trade Secrets

Providing proof of existence for trade secrets and other undisclosed or shared assets.



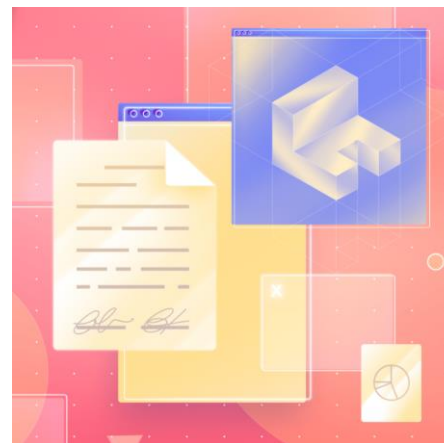
## Creative Works & Designs

Providing proof of existence for creative works, such as software code, and designs, to facilitate licensing and assignment of rights.



## Research & Data

Providing proof of existence for data, research results, and insight generated during the development phase of any Invention-related activity.



## Other Digital Assets

Management of other IP-related documents (licenses, non-disclosure agreement), supporting evidence for grace period, & post-grant defense of registered IP rights.

# Thank you

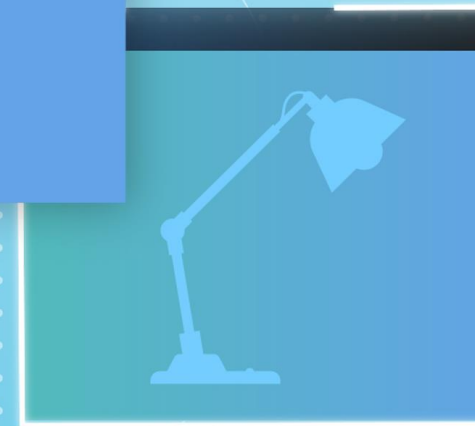
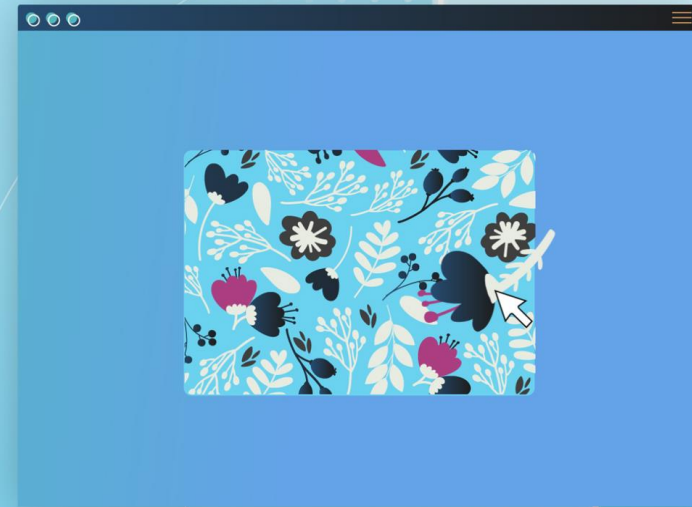
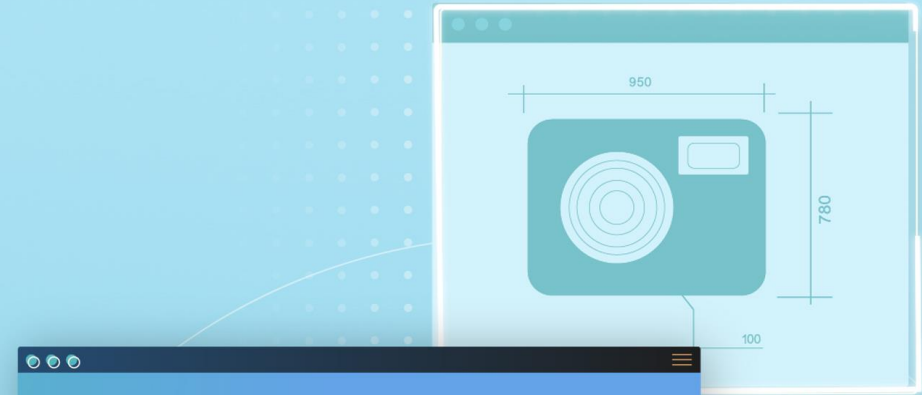


[wipoproof.wipo.int](http://wipoproof.wipo.int)



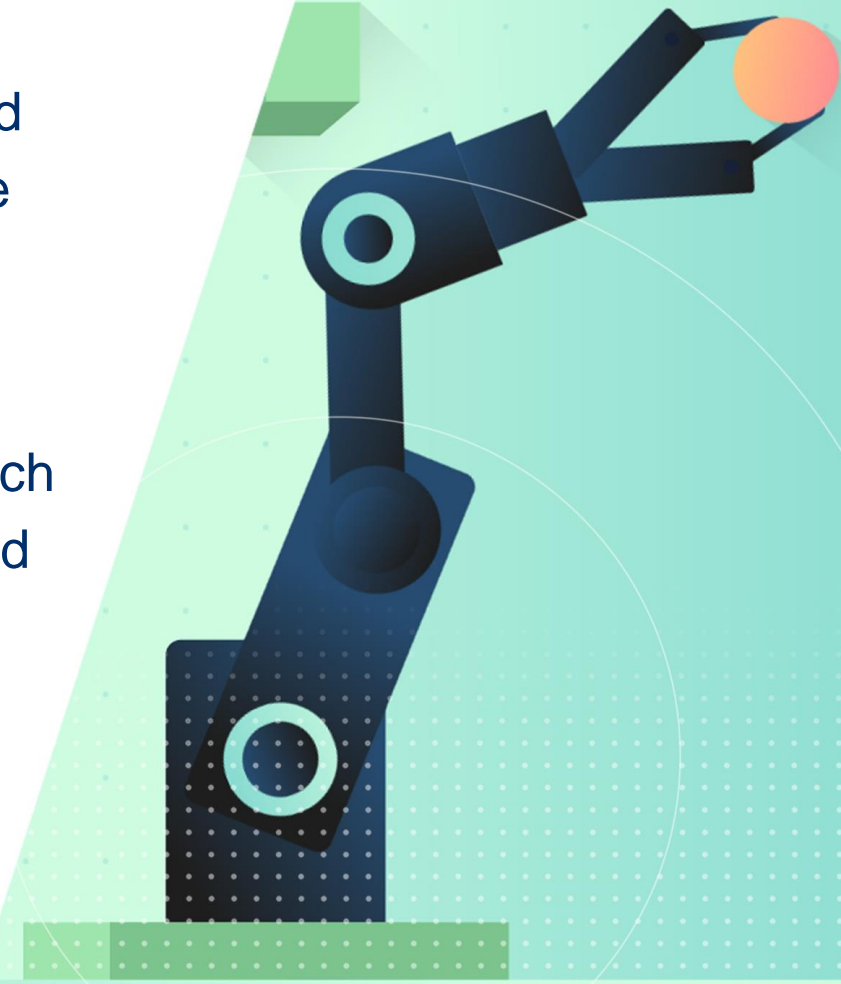
# Appendix

1. The Technology
2. Detailed schema of how it works
3. Uses for WIPO PROOF, in more detail



# The Technology

- As a TSA, WIPO uses secure standards-compliant systems and technology, called Public Key Infrastructure (PKI), to ensure the highest level of confidentiality and integrity.
- WIPO must meet requirements set out in industry standards such as IETF RFC 3161 among others, and be independently audited in order to operate as a TSA.





# How it works (details)

WIPO PROOF creates tokens using the highest standard of Public Key Infrastructure technology and is compliant with the RFC 3161 protocol.

## Access

1. Connect to the WIPO PROOF web application via the url [www.wipo.int/wipoproof](http://www.wipo.int/wipoproof) using any modern browser.

## Request a WIPO PROOF token

2. Choose a digital file(s) in any electronic format.  
NB: A WIPO Account is required to request a WIPO PROOF token.

3. The local browser generates a unique digital fingerprint (a hash) of the file using a strong SHA-2 (256bit), one-way hashing algorithm.  
NB: At no point in time is the original digital file uploaded to WIPO PROOF. The customer retains full possession of the digital file(s). Only the hash of the digital file(s) that is calculated in the customer's browser is uploaded to WIPO PROOF.

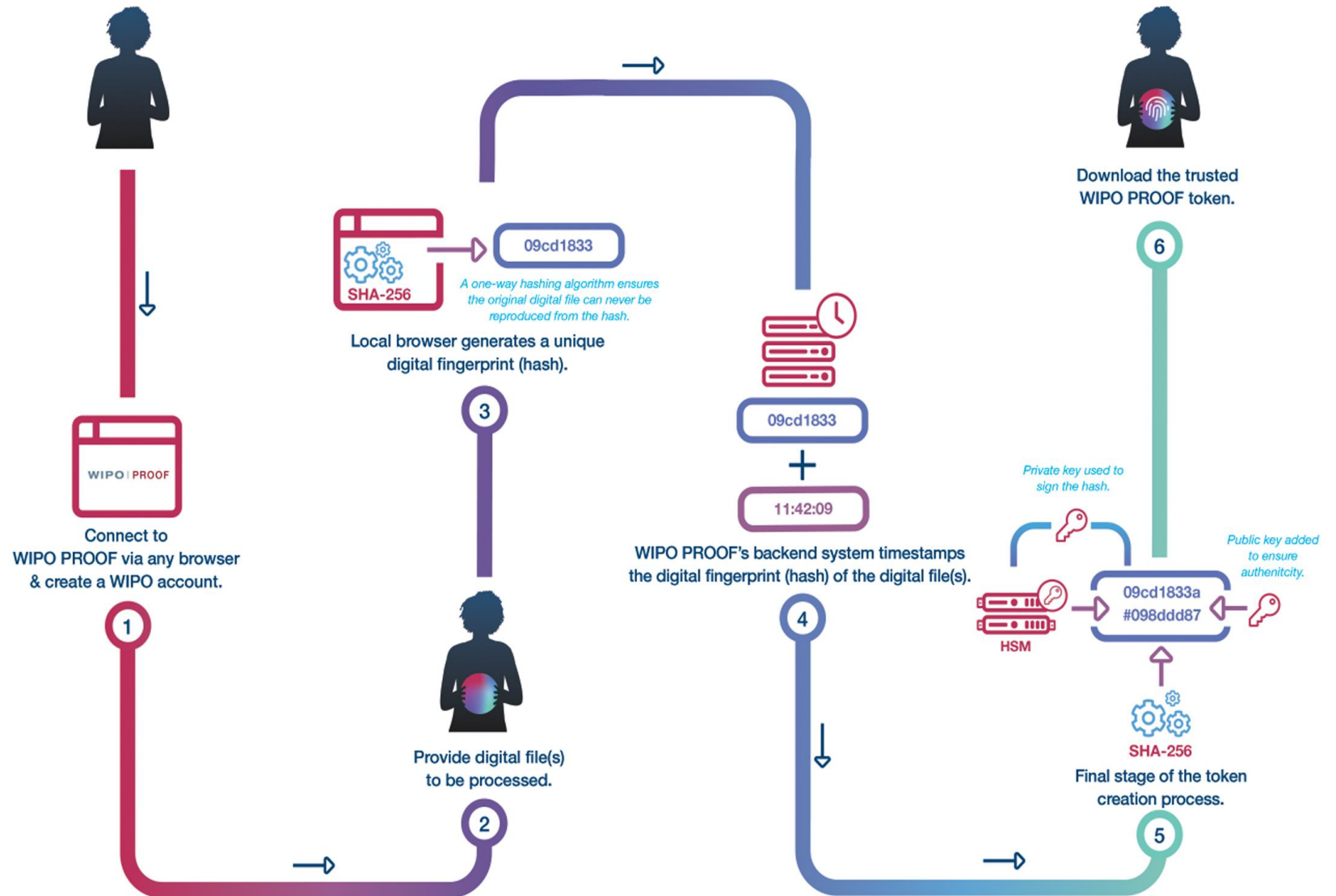
## WIPO PROOF token creation

4. WIPO PROOF's audited and high-integrity backend system, fully compliant with industry standards, timestamps the hash of the digital file(s). The hardware-based timesource used to timestamp the hash is synchronized to the Coordinated Universal Time (UTC).

5. The hash is signed with the private key stored in a locked-down Hardware Security Module (HSM) certified to FIPS-140 level 3 standard, creating a digital signature. A public key is added to the digital signature to ensure authenticity.

6. Download the resulting WIPO PROOF token which provides unalterable proof of existence of the digital file(s) at the point in time the token was created.

# The token creation process



# Uses: Trade Secrets and Know-How

Trade secrets and other valuable know-how that is to remain undisclosed can benefit from additional measures to safeguard against misuse and misappropriation.



Trade secrets are protected by law, as long as they have economic value and steps are taken to preserve their confidentiality; having evidence that a trade secret was in possession and secured at a given point in time can be extremely beneficial.

## Evidence from WIPO PROOF, in the form of digital tokens:

- Demonstrates that files existed at a certain point in time and that steps were taken to secure their confidentiality, indicating their high value whilst deterring employees from unauthorized sharing or use of trade secrets while employed or once they leave the organization.
- Deters external parties, who gain access to trade secrets and confidential files through common business relations, from relaying or using the knowledge.

## WIPO PROOF tokens can also help resolve future disputes, such as:

- Prior use defense from patent trolls or in cases where a patentee claims infringement of an invention that was previously held by an separate party in the form of a trade secret.
- Trade secret theft, helping individuals and organizations prove that a patent was filled or awarded unlawfully because it was based on a trade secret, which was disclosed without a party's authorization.

# Uses: Creative Works and Designs

Establishing proof of existence at a point-in-time for unregistered intellectual assets.



Creative works and some designs benefit from inherent copyright protection where official registration is not required - This can often lead to complications and disputes if there is lack of evidence proving the existence of work

**WIPO PROOF tokens confirm that a creative work, software, or design existed under certain possession at a specific date and time; this has numerous ramifications.**

## **Evidence from WIPO PROOF:**

- Can be linked to authorship at the date of creation or at the time of upload to a digital distribution platform such as Youtube and Spotify;
- Allows creators to certify individual contributions (such as lyrics, scripts, and composition, for musical works) in joint endeavours to aid in resolving possible future disagreements around authorship;
- Can prove the use of existing registered trademarks in the marketplace;
- Can prove prior use and possession of industrial designs, useful in:
  - Japan, China and the Republic of Korea, when industrial designs similar to registered ones are used independently of the rights holders;
  - The EU, where creators depend on 3 years of granted protection for unregistered designs.

# Uses: Research and Data

A protective measure for data, research results, and insights generated during the development phase of any invention-related activity.



Research, data and any related insights are valuable inputs and outputs of the innovation and creation process. Even if research leads to a form of formally protected intellectual property, all related data remains vulnerable to misappropriation and other potential future disputes.

**WIPO PROOF tokens confirm that such digital files existed under certain possession at a specific date and time.**

**This aides innovators and creators by:**

- Providing a basic insurance policy for valuable digital assets, mitigating any risks associated to future disputes;
  - For example, structured data used to train Artificial Intelligence is rapidly increasing in importance and demand, becoming a valued intellectual asset for many organizations. By using WIPO PROOF as a protective measure, this data can be safeguarded in case of theft;
- Serving as a form of secure version control for research results, and lab notes;
  - For example, in the Life Sciences sector, massive amounts of data and research is generated where more formal and controlled recordation of the existence of such assets can be very beneficial to various stakeholders. WIPO PROOF can provide such a mechanism.

# Uses: Other Digital Assets

Peace of mind against potential disputes concerning any digital asset.



Inventors and creators produce many digital assets during the innovation process that may or may not become registered IP. Such assets are subject to future disputes, challenging their past existence and possession — Taking the right protective measures today can be very advantageous in the future.

## Evidence from WIPO PROOF can be used to prove:

- Exhibition during pre-patent filing grace periods, and the possession and existence of related digital assets used to support the quality of a patent;
- Existence of earlier and preparatory work related to the registration of a trademark, supporting prior use claims in common law jurisdictions;
- Historical development of designs and tech, challenged in related IP infringement cases;
- Existence of operational records and data essential to undisclosed know-how.

## Additionally, evidence from WIPO PROOF is useful for:

- Establishing prior art (e.g., for defensive publishing);
- Prior use defense and to fight patent trolling;
- Certifying existence and possession of assets used to develop formally protected IP;
- Securing non-IP related documentation for audit and compliance, forensics, and the insurance industry.