

Hague Web Services

New machine-to-machine bi-directional data exchange
between WIPO and national intellectual property offices

hague.it@wipo.int

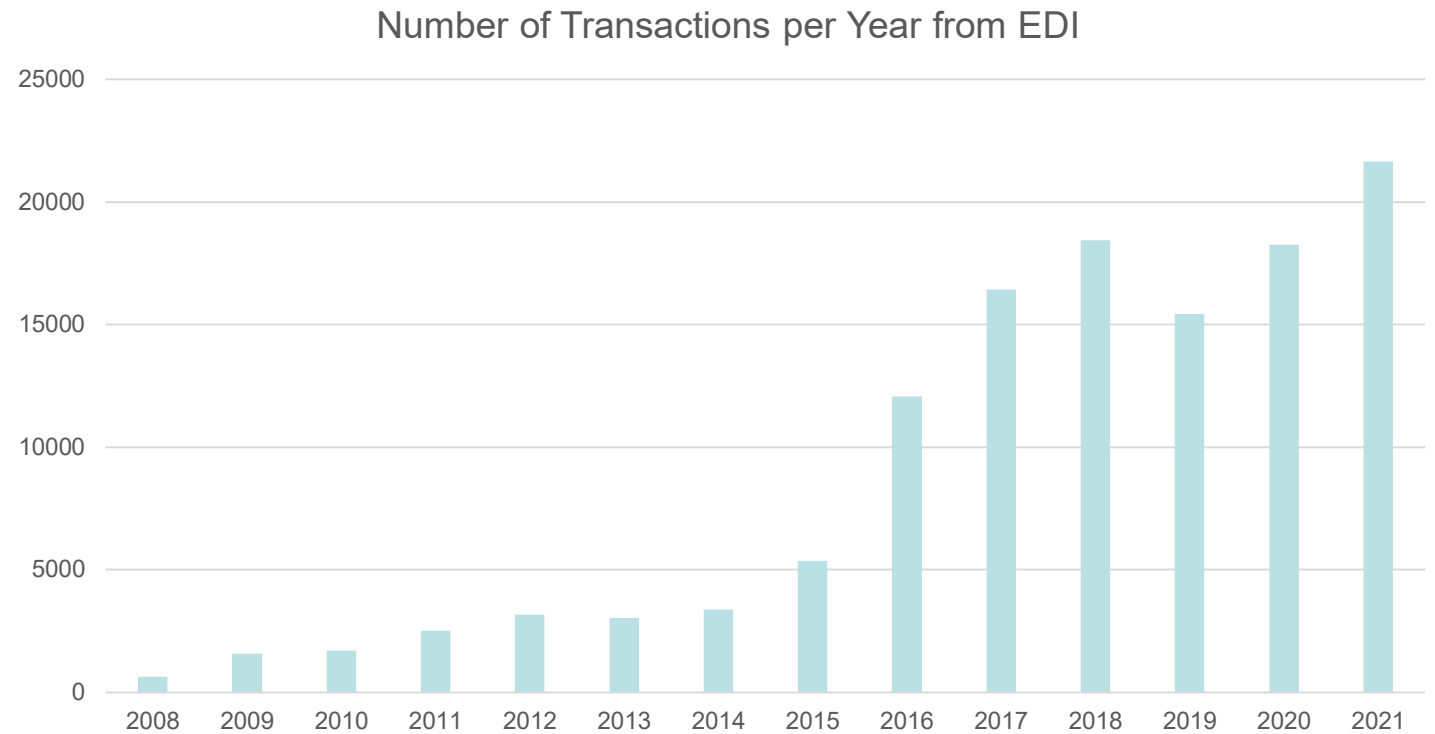
May 2022

Overview

- Growth
- Hague Web Services
- Security
- Protocol and Standards
- Services
- Next Steps

Growth

- Increasing number of transactions
- Demand for secure, reliable, fast, two-way communication
- Demand for scalability and automation



Hague Web Services

HWS are a secure, highly-available, reliable, HTTPS/REST API-based protocol for exchanging data with the Hague System:

- Send decisions or indirect applications
- Query import and processing status
- Retrieve Hague Bulletins
- Retrieve confidential copies

M2M two-way communication between the IB and IPO:

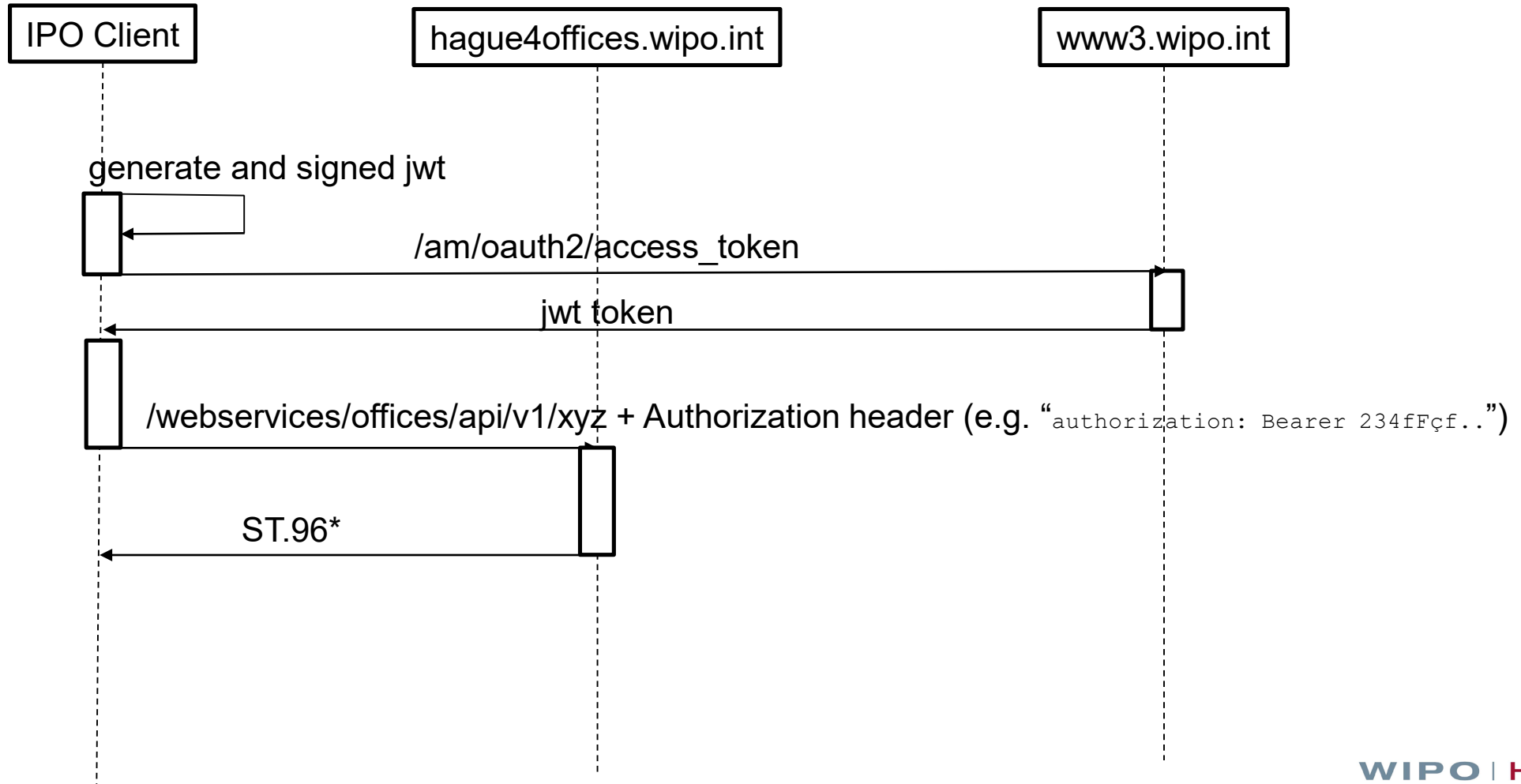
- REST API
- Standards-based: HTTPS, OAuth 2.0, FAPI 1.0, ST.90, ST.96
- Secure

Security

Defense in depth:

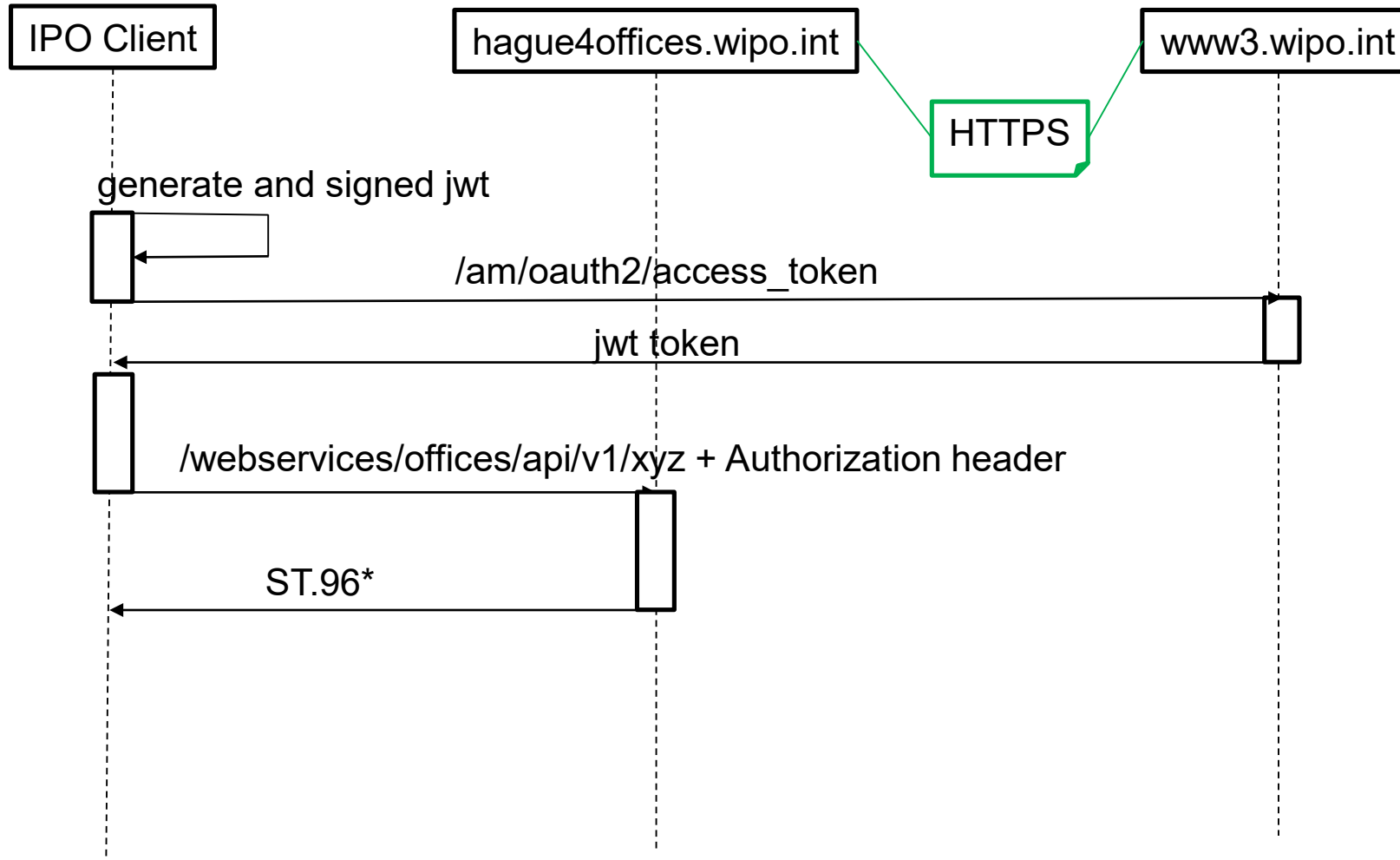
- IPO IP Whitelisting
- Several levels of firewall continuously updated with new rules
- Automatic intrusion detection and alarms
- Observability of the infrastructure and servers at several levels
- HTTPS
- OAuth2.0 and FAPI 1.0 Authentication asymmetric public/private key pairs (i.e. IB does not know the private key)

Protocol and Standards



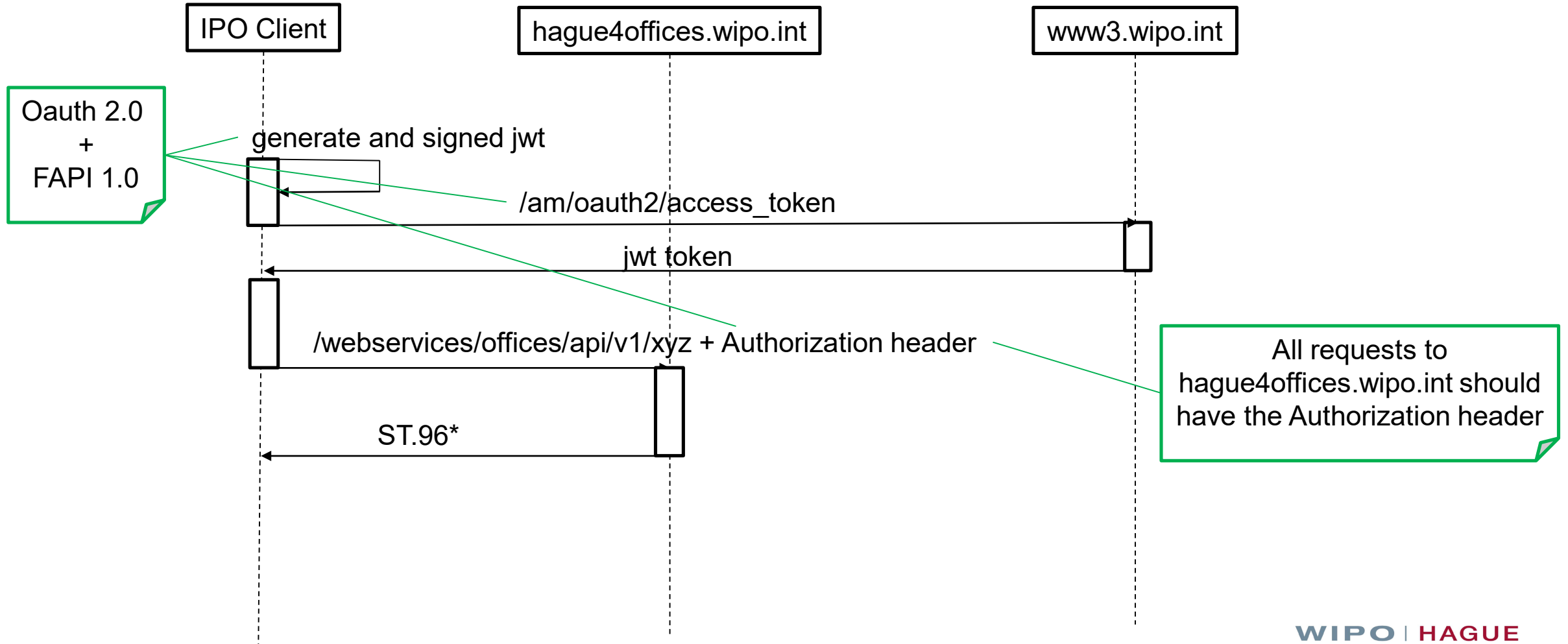
* Extensions of ST.96 are required for the import and processing status payloads.

Protocol and Standards



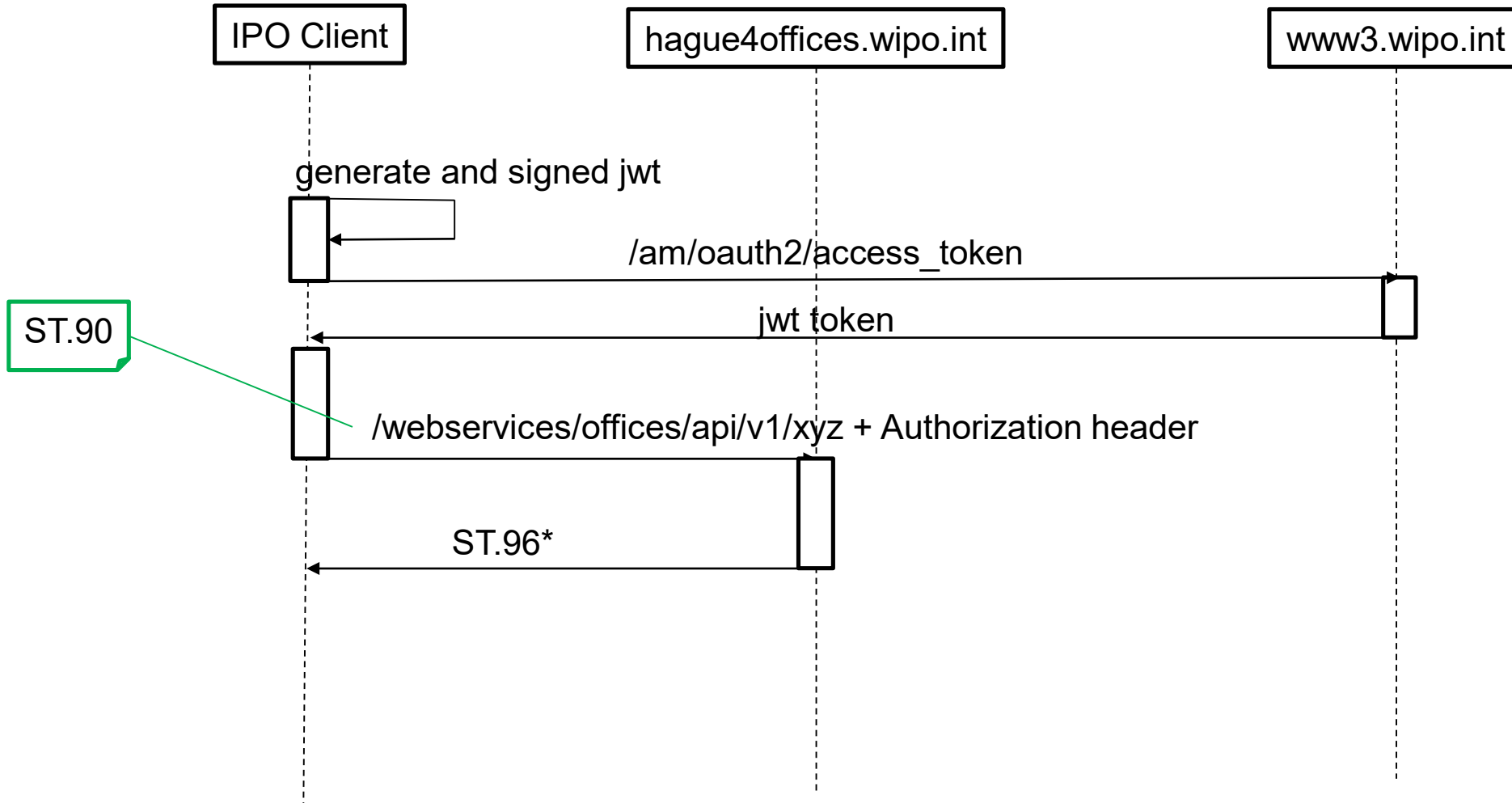
* Extensions of ST.96 are required for the import and processing status payloads.

Protocol and Standards



* Extensions of ST.96 are required for the import and processing status payloads.

Protocol and Standards

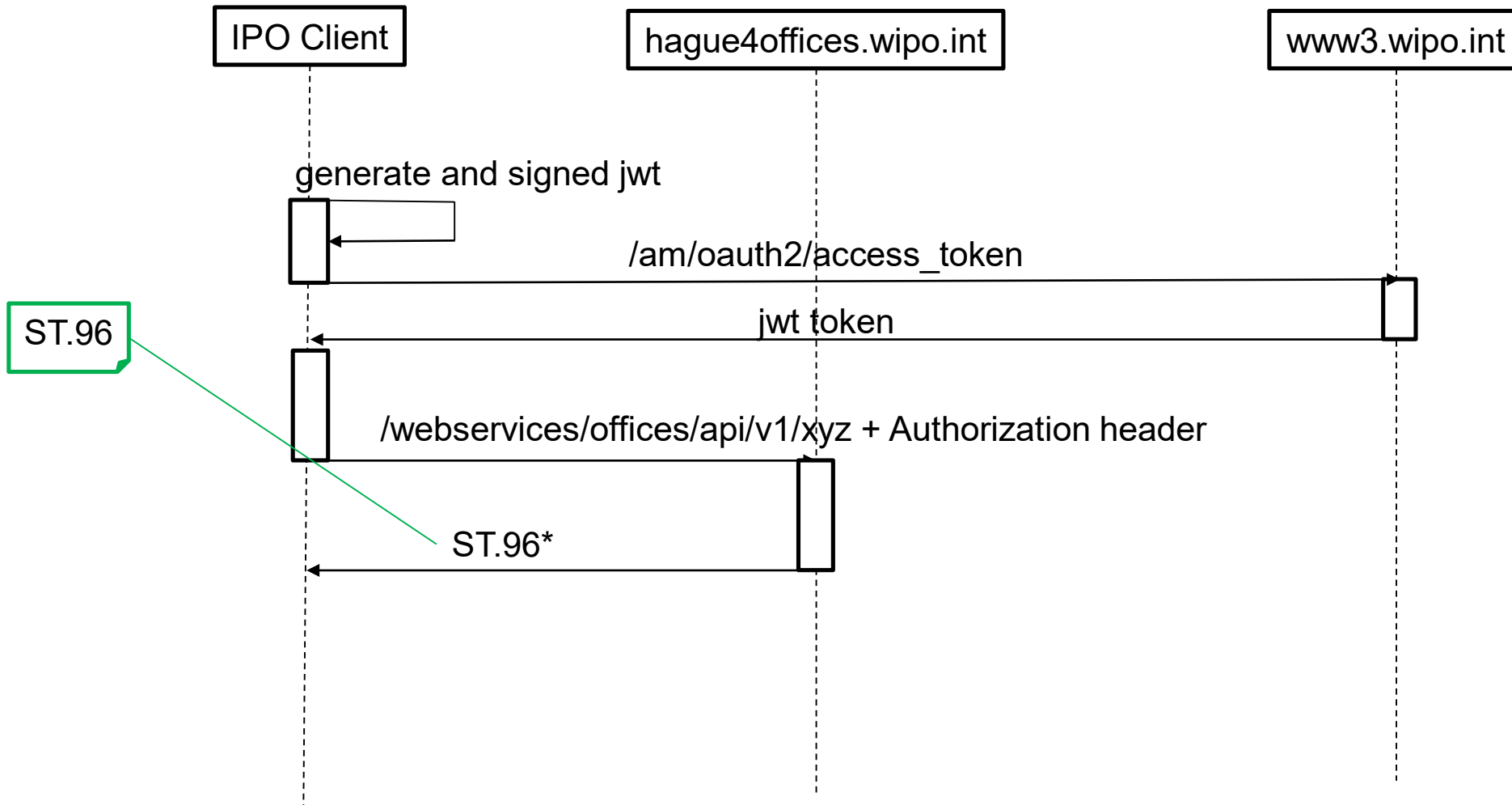


ST.90

ST.96*

* Extensions of ST.96 are required for the import and processing status payloads.

Protocol and Standards



* Extensions of ST.96 are required for the import and processing status payloads.

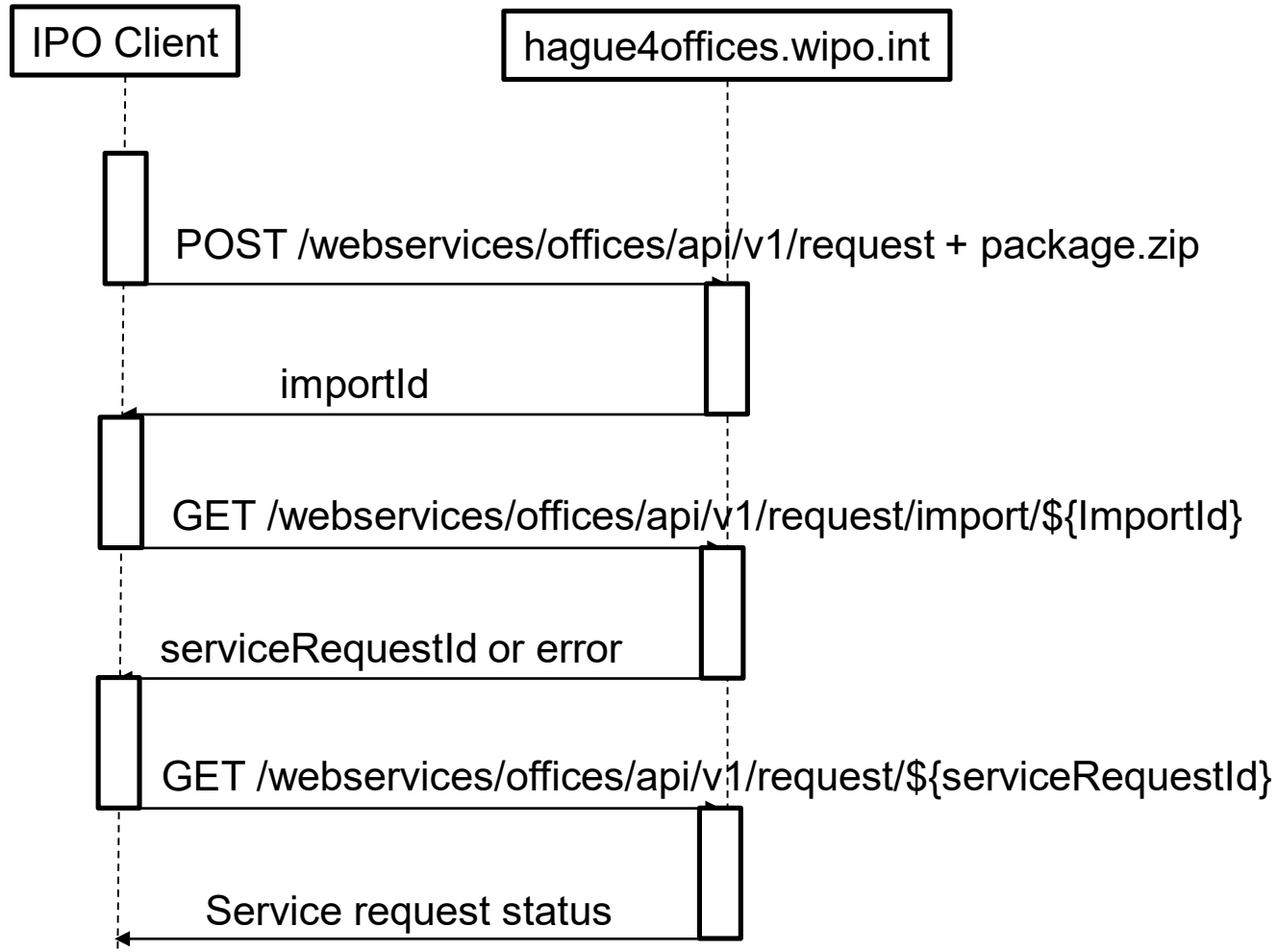
Services

- Send indirect applications and check their import and processing status
- Send decisions and check their import and processing status
- Retrieve Confidential Copy
- Retrieve Bulletin

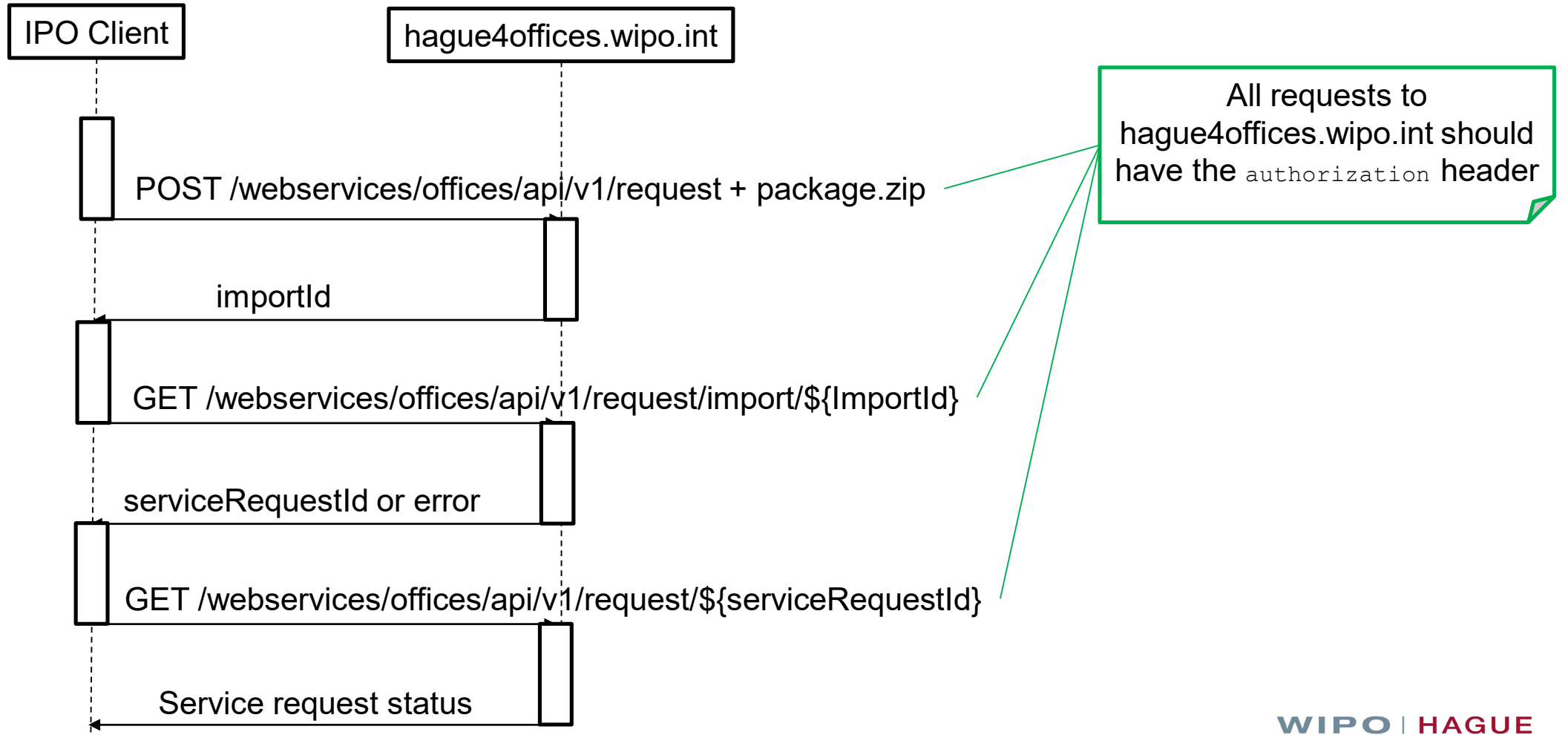
An office can use one or more of these services as best suits their needs.

For example, if an office does not send indirect applications but would like a more efficient channel to access the Hague Bulletin, it can use the Hague Web Services to do so.

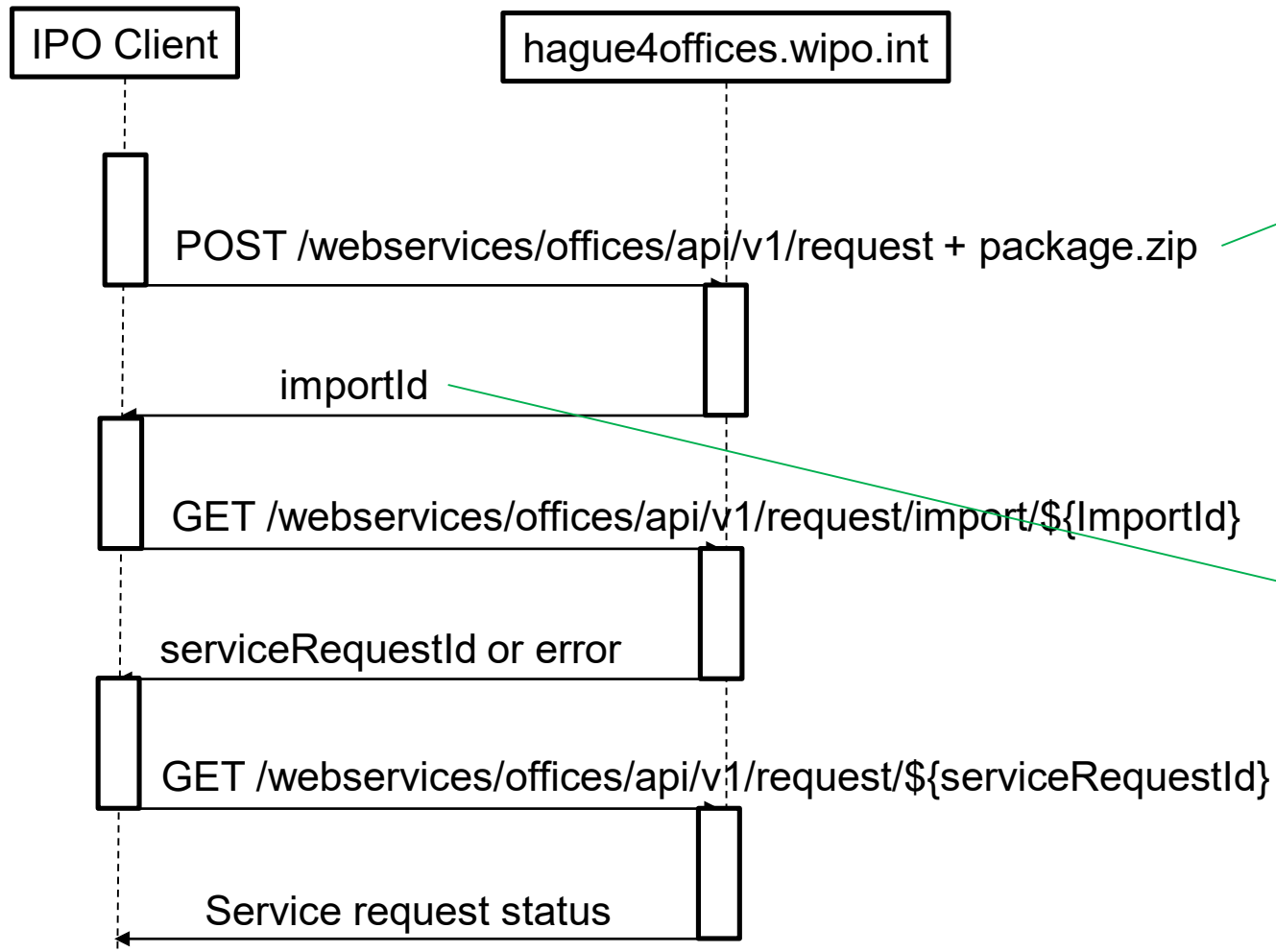
Services: Indirect Filing



Services: Indirect Filing



Services: Indirect Filing

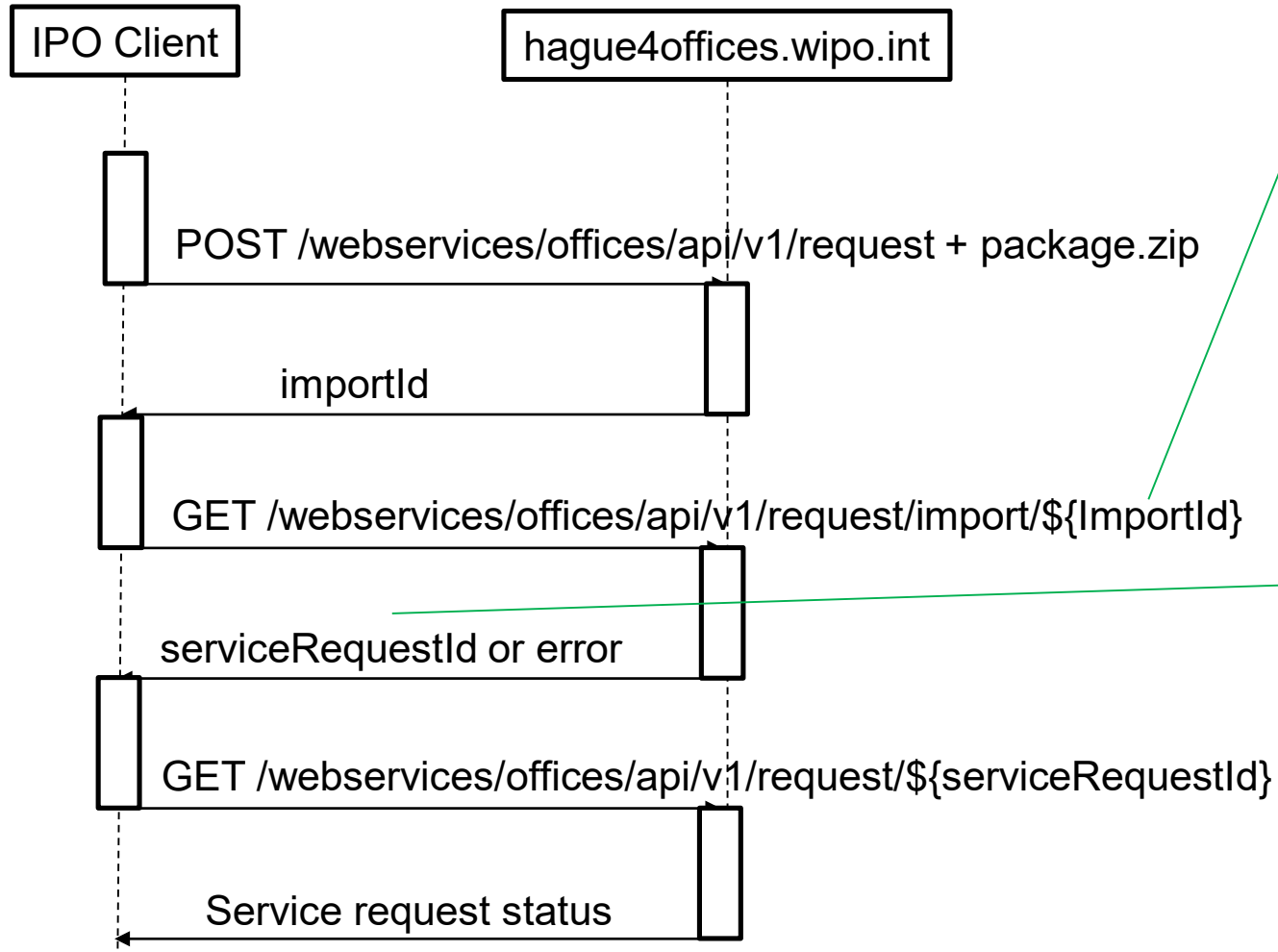


ST.96 ZIP Package Contents
1 Transaction per package!

- docs
- images
- import-app

ImportId is an identifier associated to the package **before** its validation. The REST API follows an asynchronous communication pattern.

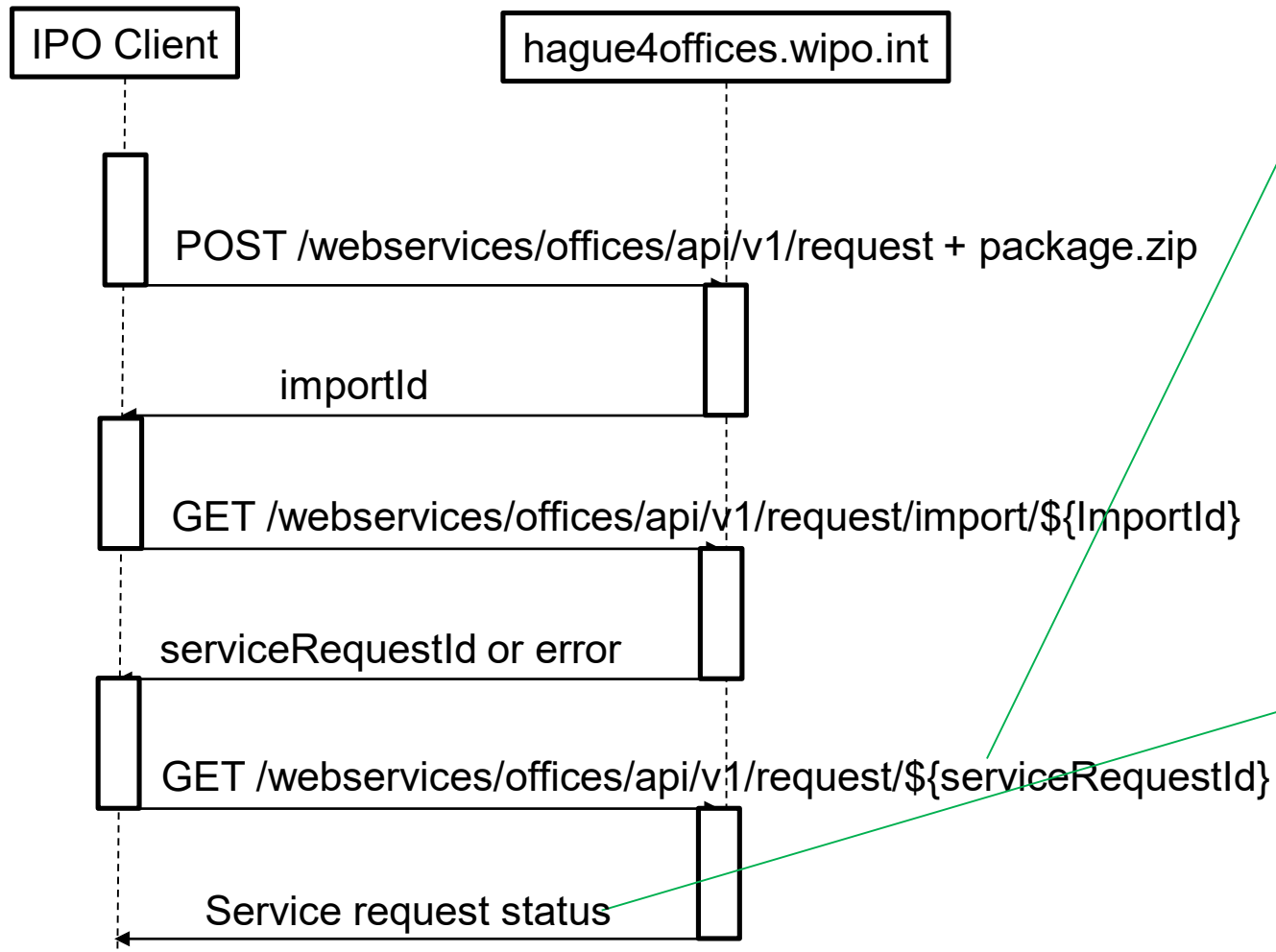
Services: Indirect Filing



The importId is used to get the result of the validation and import process. Is the package well-formed and valid?

ST.96 4.X
Import status with the serviceRequestId or the reasons behind the failed import

Services: Indirect Filing



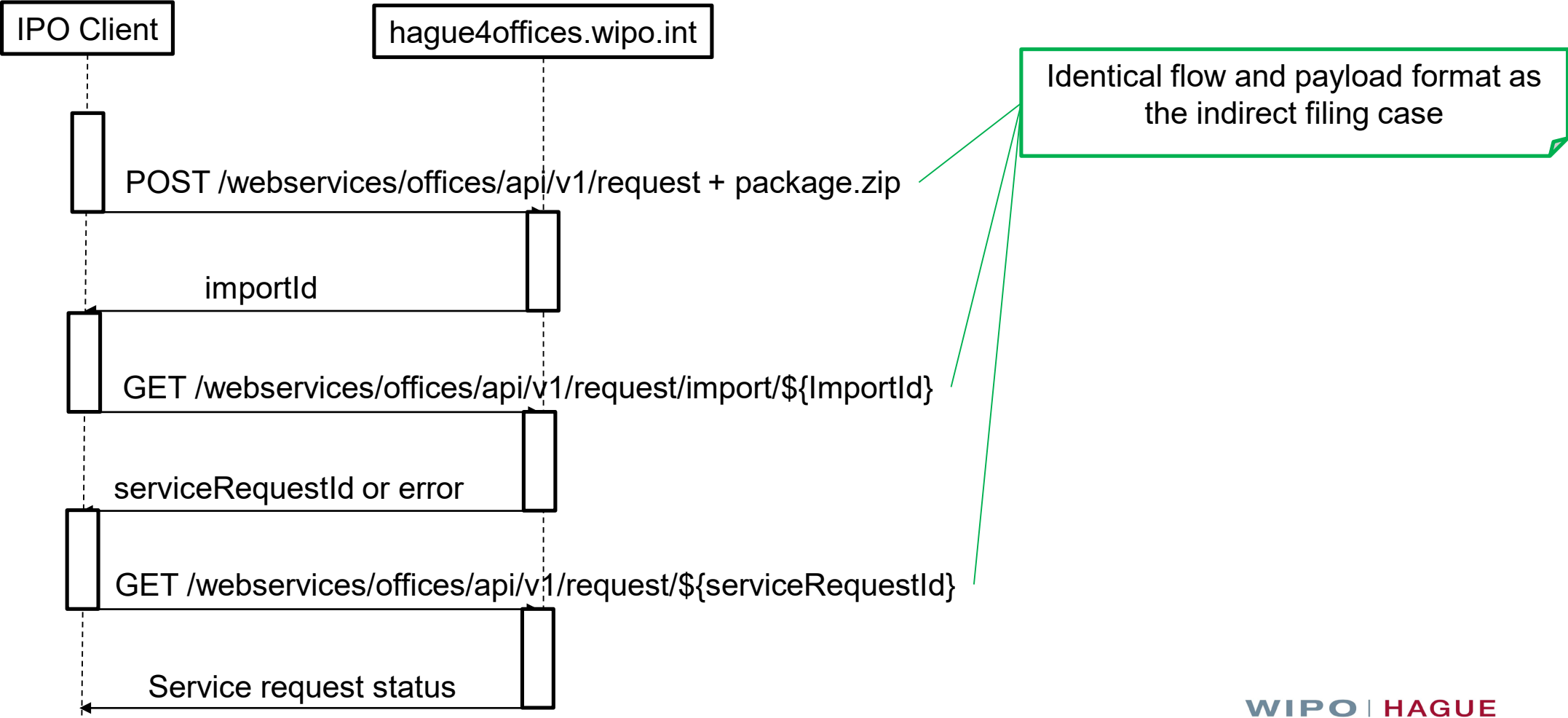
The serviceRequestId is used to get the processing status of the indirect filing.

ST.96 4.X
ServiceRequestId
Status:

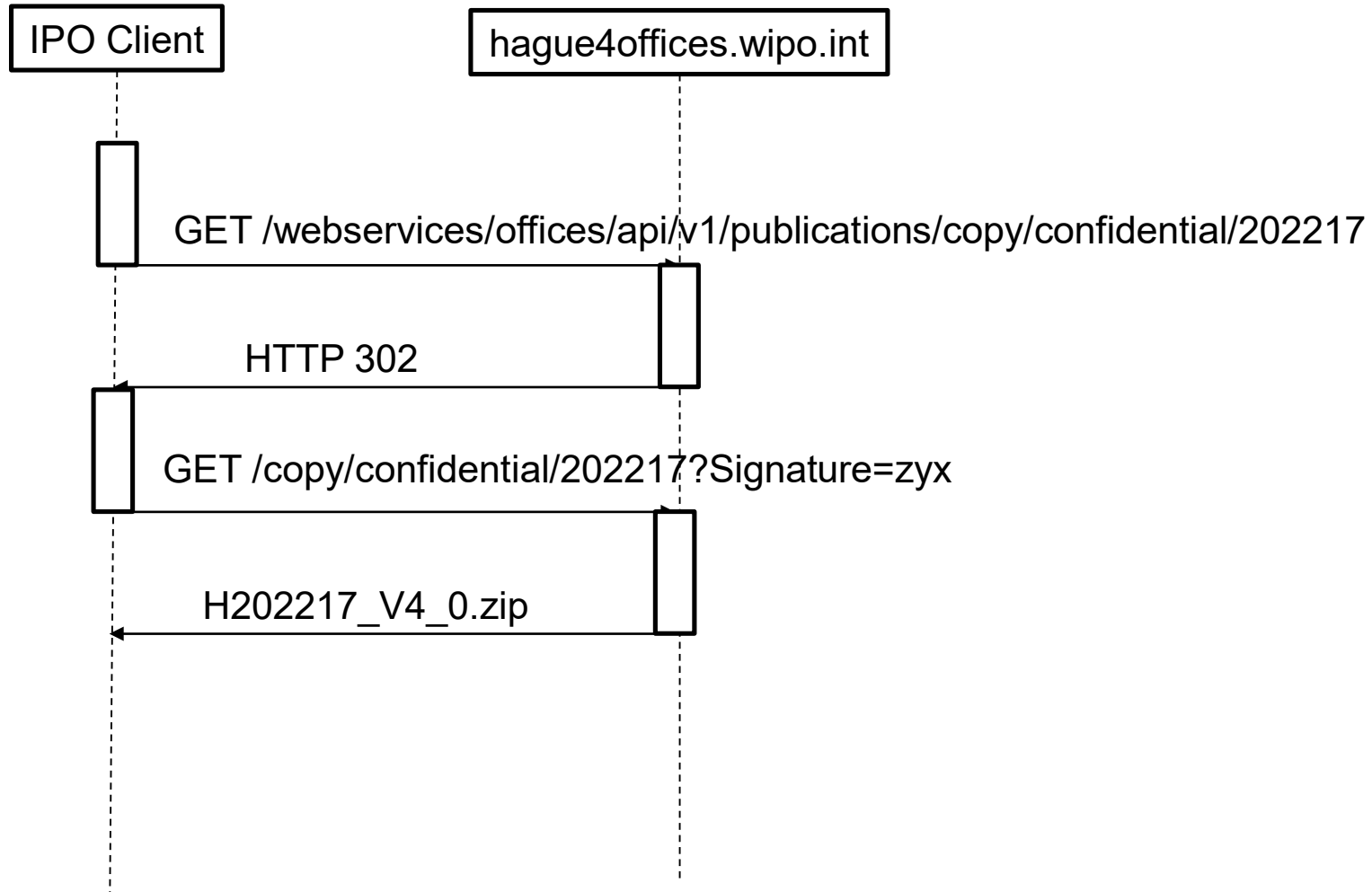
- UNDER_EXAMINATION
- PENDING_REGULARIZATION
- RECORDED
- ABANDONED
- CANCELLED

IRN (optional)
RecordId (optional)
RecordingDate (optional)
PublicationDate (optional)

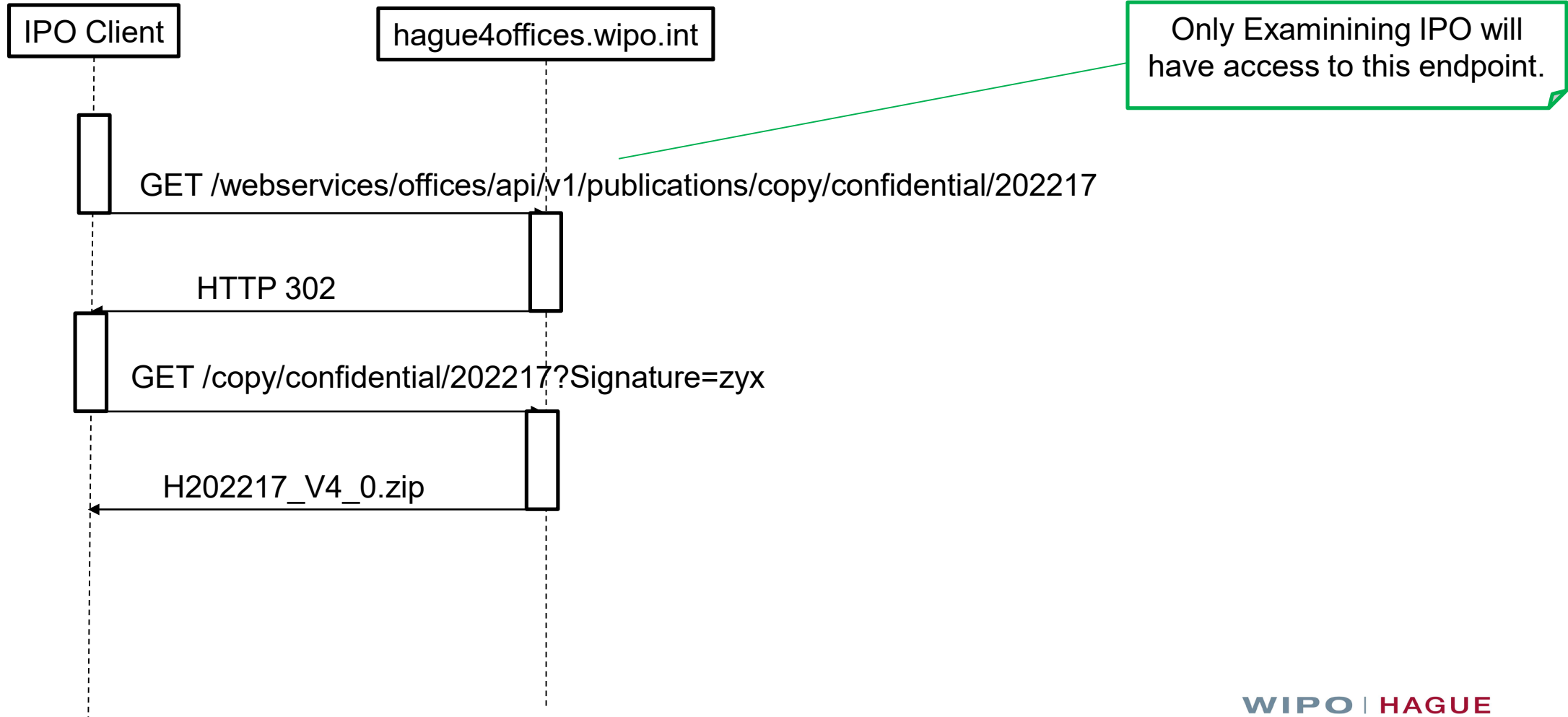
Services: Decisions



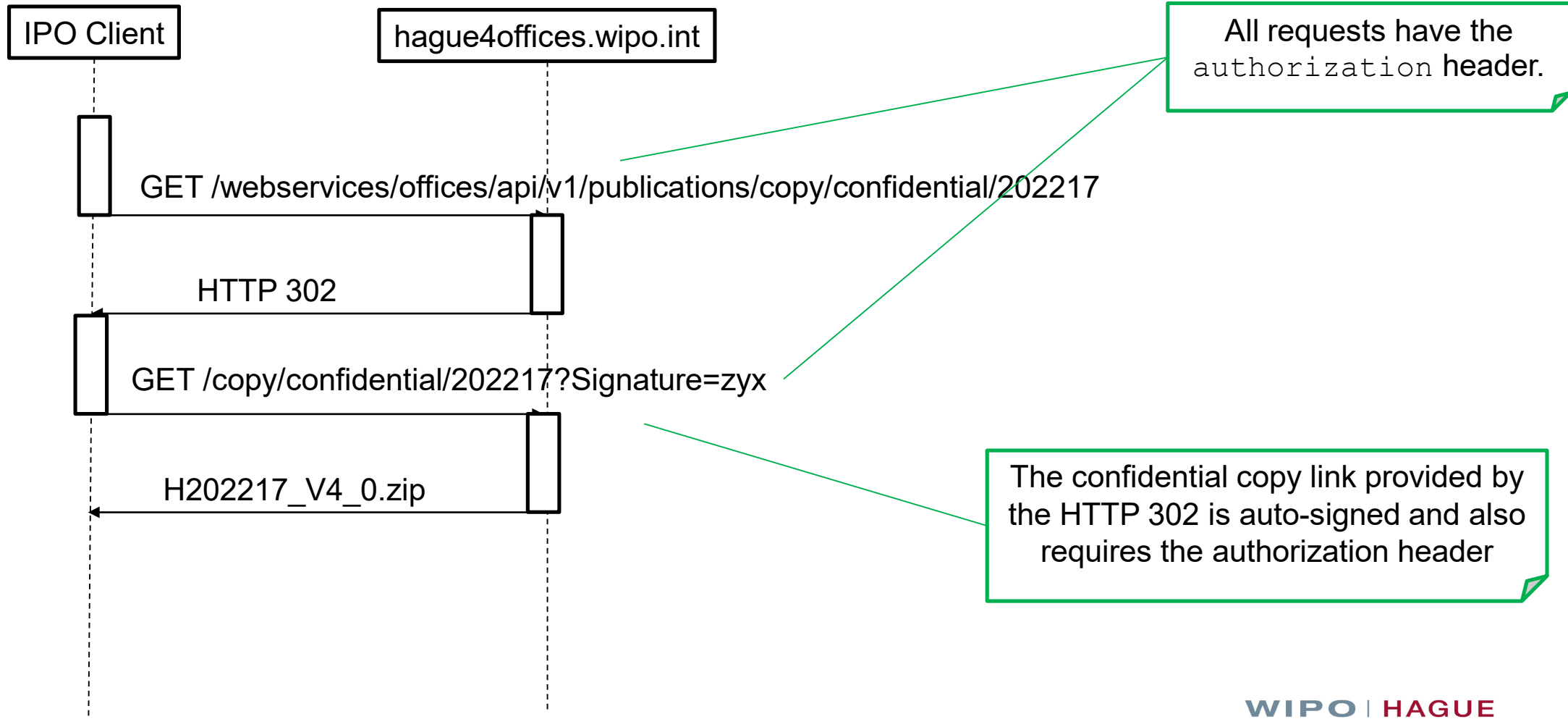
Services: Confidential Copy



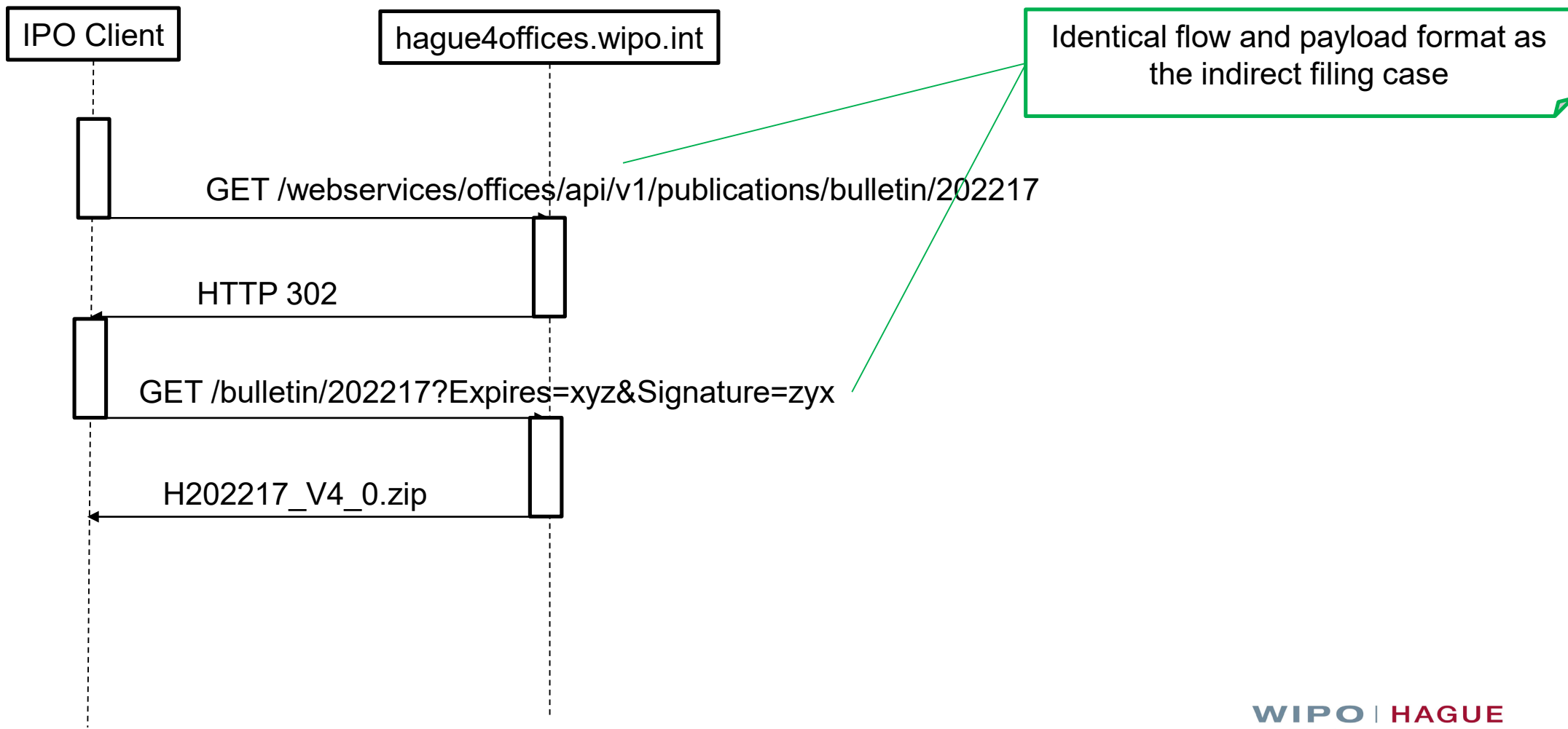
Services: Confidential Copy



Services: Confidential Copy



Services: Bulletin



Next Steps

1. Contact hague.it@wipo.int with your questions or to request documentation and client examples
 - End-to-end documentation
 - RAML REST API description
 - Java client code example
2. Let's discuss and plan together at your pace
3. IPO generates their private/public key for Acceptance and request Acceptance credentials
4. Let's work together until your system is ready
5. IPO generates their private/public key for Production and request Production credentials
6. Go!

