



**INTELLECTUAL PROPERTY  
P H I L I P P I N E S**

**VISION:**

*“An Intellectual Property - conscious Philippines in a demystified, development-oriented, and democratized IP System by 2020”*

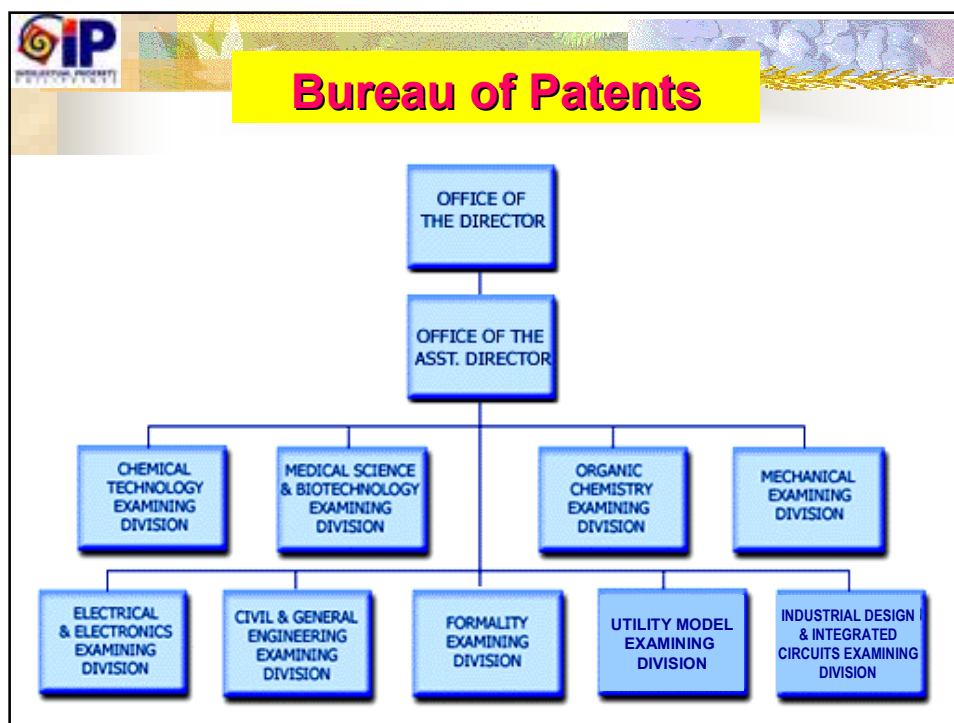



INTELLECTUAL PROPERTY PHILIPPINES

**“CURRENT STATUS AND FUTURE  
PROSPECTS ON PATENT”**


By

MERITO J. CARAG  
and  
PRECILA BULILAN  
Bureau of Patents,  
Intellectual Property Office  
Philippines





# CURRENT STATUS OF APPLICATIONS



## Number of PATENT Applications Received by the IP Philippines

YEAR	DIRECT ROUTE		PCT ROUTE		Total
	Foreign	Local	Designated Office	Receiving Office	
1998	3,280	163			3,443
1999	3,217	144			3,361
2000	3,482	154			3,636
2001	2,470	135		(7)	2,605
2002	705	149	64	(21)	918
2003	433	141	1,368	(16)	1,942
2004	413	157	2,125	12	2,695
2005	410	210	2,352	25	2,972
2006	372	223	2,666	22	3,261
2007	289	225	2,959	16	3,473
2008	248	216	2,847	12	3,311
2009	226	171	2,599	22	2,996
<b>Total</b>	<b>15,545</b>	<b>2,088</b>	<b>16,980</b>	<b>153</b>	<b>34,613</b>

% Foreign : 94%  
% Local : 6%



### Number of UTILITY MODEL Applications Received by the IP Philippines

YEAR	Foreign	Local	Total
1998	31	602	633
1999	41	606	647
2000	36	536	572
2001	21	426	447
2002	39	522	561
2003	21	477	498
2004	19	573	592
2005	27	519	546
2006	22	519	541
2007	32	395	427
2008	33	512	545
2009	29	489	518
Total	351	6,176	6,527

% Foreign : 5%  
% Local : 95%



### Number of INDUSTRIAL DESIGN Applications Received by the IP Philippines

YEAR	Foreign	Local	Total
1998	227	499	726
1999	252	515	767
2000	340	479	819
2001	316	382	698
2002	335	448	783
2003	343	667	1,010
2004	476	536	1,012
2005	619	646	1,265
2006	486	475	961
2007	434	431	865
2008	581	640	1,221
2009	339	465	804
Total	4,748	6,183	10,931

% Foreign : 43%  
% Local : 27%



### REMAINING PATENTS APPLICATIONS PER YEAR FILED

YEAR FILED	Total No. of Applications Received	Ending Balance as of December 31, 2009
1998	3,443	14
1999	3,361	27
2000	3,636	47
2001	2,605	40
2002	918	24
2003	1,942	177
2004	2,695	533
2005	2,972	998
2006	3,261	2,277
2007	3,473	3,292
2008	3,311	3,130
2009	2,996	2,989
Total	34,613	13,556



### REMAINING UTILITY MODEL APPLICATIONS PER YEAR FILED

YEAR FILED	Total No. of Applications Received	Ending Balance as of December 31, 2009
1998	633	0
1999	647	0
2000	572	0
2001	447	0
2002	561	0
2003	498	0
2004	592	0
2005	546	1
2006	541	1
2007	427	6
2008	545	29
2009	518	186
Total	6,527	223



## REMAINING INDUSTRIAL DESIGN APPLICATIONS PER YEAR FILED

YEAR FILED	Total No. of Applications Received	Ending Balance as of December 31, 2009
1998	726	0
1999	767	0
2000	819	0
2001	698	0
2002	783	0
2003	1,010	0
2004	1,012	0
2005	1,265	0
2006	961	5
2007	865	22
2008	1,221	11
2009	804	296
<b>Total</b>	<b>10,931</b>	<b>334</b>



## TOTAL APPLICATIONS GRANTED/ REGISTERED

### A. Patents

YEAR FILED	Total No. of granted Patents per year
2000	574
2001	1,089
2002	1,124
2003	1,173
2004	1,405
2005	1,620
2006	1,216
2007	1,803
2008	838
2009	1,674
<b>Total</b>	<b>12,516</b>



## TOTAL APPLICATIONS GRANTED/ REGISTERED

### B. Utility Model

YEAR FILED	Total No. of registration per year
2000	288
2001	189
2002	253
2003	416
2004	351
2005	310
2006	300
2007	773
2008	457
2009	378
Total	3,715



## TOTAL APPLICATIONS GRANTED/ REGISTERED

### C. INDUSTRIAL DESIGNS

YEAR FILED	Total No. of registration per year
2000	797
2001	393
2002	882
2003	1,001
2004	374
2005	758
2006	599
2007	1,333
2008	1,214
2009	796
Total	8,147

## AVERAGE TURN-AROUND-TIME (TAT) PER YEAR

### PATENTS

YEAR	TAT (Years)		
	PATENTS	UTILITY MODEL	INDUSTRIAL DESIGNS
2006	6.35	1.73	1.94
2007	5.18	0.95	0.94
2008	4.77	0.81	0.47
2009	4.99	0.72	0.46

## FUTURE PROSPECTS ON PATENTS





## **CHALLENGES AND GENERAL DIRECTION**

- A. Reduce the Average Turn Around Time (TAT)**
  - (1) from 5 to 4.5 years for invention in the year 2010
  - (2) 8 to 6 months for Utility Model
  - (3) 6 to 3 months for Industrial Designs
  
- B. Backlog Reduction**
  - (1) Dispose 90% of remaining applications filed 2004 and earlier
  - (2) Dispose 70% of remaining 2005 filed applications
  - (3) Dispose 50 % of remaining 2006 filed applications



## **MANPOWER**

- 1. A NUMBER OF Examiners have been detailed to other units in the Office**
  - Previous No. of Patent Examiner positions : 48
  - Present No. of Patent Examiner positions : 35
  
- 2. Hiring/Training of New Examiners**



## Digitization of Patent Documents

1. **Intellectual Property Digital Library (IPDL)**  
The newly developed IPDL is now on line, which includes.
  - Granted Patents
  - Registered Utility Model, Industrial Designs
  - Published Patent Applications
2. **Scanning of newly filed applications, granted Patents and Registered Utility Model and Industrial Designs is on going**
3. **Electronic Retrieval System of PCT National Phase Entry (PCT-EDIS) applications has been completed but later on will be subsumed to PATENTSCOPE.**



## Computerization

1. **Patent Administration Computerized System (PACSYS)**  
Developed through the assistance of JICA and currently being used.
2. **Integrated Intellectual Property Management System (IIPMS)**  
The IIPMS will be the IP Philippines' primary tool to administer the IP system, manage all IP applications from reception to post-registration, and provide high quality services to its stakeholders and the public in general.



## Integrated Intellectual Property Management System (IIPMS)

The IIPMS will consist mainly of WIPO's Intellectual Property Automation System (IPAS), customized according to IP Philippines' business processes and stakeholder requirements and will integrate smaller systems needed by the Office, such as:

1. Fee Management Systems
2. Electronic Online and Offline Filing
3. Agent Information Management System
4. Business processes reengineering and redesign of workflows of Patent, Utility Model, Industrial Designs, and Trademark
5. Updating and clean-up of the patents and trademarks databases.



## Thank You

