

**E**

**WIPO-ESCWA/EC/BEY/ 03/Doc. 5a**

**ORIGINAL:** English

**DATE:** April 2003



LEBANESEREPUBLIC



UNITEDNATIONSECONOMIC  
ANDSOCIALCOMMISSIONFOR  
WESTERNASIA(ESCWA)



WORLDINTELLECTUAL  
PROPERTYORGANIZATION

**WIPO-ESCWAARABREGI ONALCONFERENCEON  
INTELLECTUALPROPERT YANDELECTRONICCOM MERCE**

organizedby  
theWorldIntellectualPropertyOrganization(WIPO)  
and  
theUnitedNationsEconomicandSocialCommissionforWesternAsia(ESCWA)

incooperationwith  
theMi nistryofEconomyandTrade

**Beirut,May 7and 8, 2003**

**SecurityandPrivacyontheInternet**

*Mr. Karim Kalaawi*  
*TechnicalSpecialist*  
Microsoft-EasternMediterraneanRegion,Beirut

# Making Computing More Trustworthy

Karim Kalaawi  
Microsoft Eastern Mediterranean

*Microsoft*

# Our Industry has a Problem

Security breaches common

- n Malicious code
- n Good code with bugs

Escalating challenges

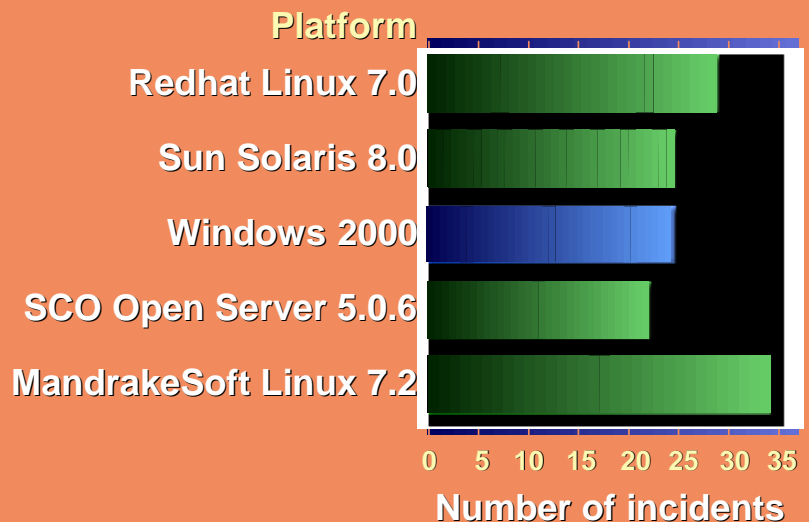
- n Connectivity
- n Administration

Adoption of IT in doubt

- n Customers need to believe in technologies, companies and services

No common framework for discussion

Reported Vulnerabilities by OS in 2001



# Microsoft has a Big Problem

9/11, Code Red, Nimda

n changed customers' priorities

n...and they have viable alternatives

Deep cynicism

n about our sincerity

n...and ability to deliver

What matters is what  
we do, not what we say

Our growth, even survival, requires trustworthy  
computing

	CorpIT		
	MS	Diff.	IBM
Innovation	63%	9%	54%
Quality Products	50%	22%	72%
Trustworthy	24%	49%	73%
Ethical	17%	57%	74%

Source: Domestic Corporate Tracking Studies (DC, SV Elite, and Broad and Business Audience surveys). Scores are "net" ("top box" (7 - 9) - "bottom box" (1 - 3)).

# Critical Infrastructure

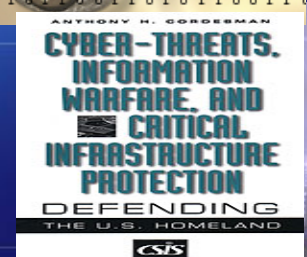
Computers are increasingly essential our everyday lives

Evolving markets drive new priorities

- n Complex, interconnected systems
- n Devices at all scales
- n Enterprise reliability requirements

Information Technology is essential but vulnerable

Customers won't depend on what they don't trust



# The Opportunity

To be indispensable, computing must gain the same level of trust that cars, phones, electricity and other essential services enjoy

## Opportunity

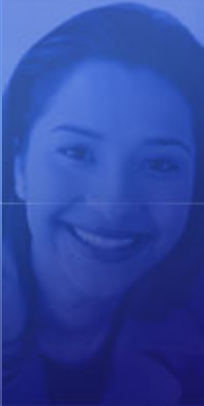
- n Continued leadership, revenue and profitability
- n First mover advantage
- n Competitive differentiation

Doing nothing is not an option



## The Goal of the Trustworthy Computing Initiative

“To be the trusted vendor of secure, private and reliable computing for everyone”



It's M

## Trustworthy Computing

**Security**

**Privacy**

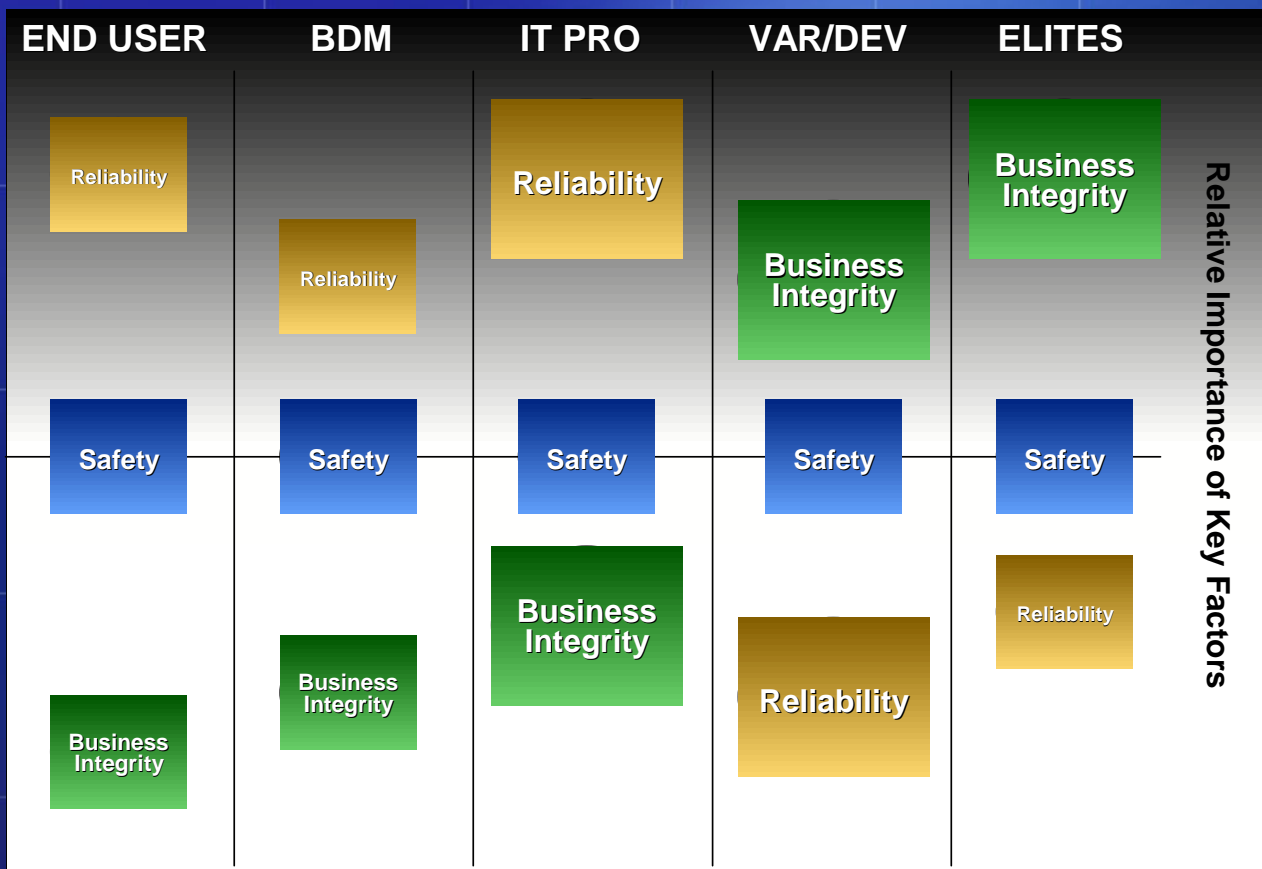
**Reliability**

**Business  
Integrity**





# Customer Priorities Vary



Sources - Trust impact: 13 focus groups, 20 1-1 interviews.  
 Trust score: Image tracking study and trial flash polls. Cheskin Research

# Tackling the Problem

## Work on all fronts

- n Security, privacy, reliability, business integrity
- n All platforms and experiences
- n Across the organization
- n With all our customers
- n Across the industry

## Culture shift

- n Trustworthiness as priority
- n Now and Forever
- n Change behavior as well as perceptions



# Secure by Design

## Product

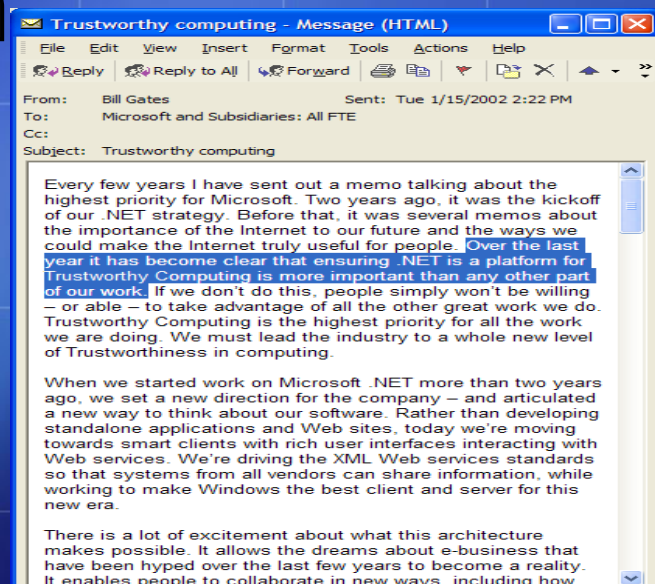
- n Security Push
- n New tools, compiler improvements
- n Security Business Unit

## People

- n Retrained dev, test, PM
- n Appointed Chief Security Strategist
- n Leads driving best practices across company

## Process

- n R&D budget for security tripled
- n Threat model-driven reviews
- n Bug feedback loop & code sign-off reqs



# Secure By Default



## Office XP

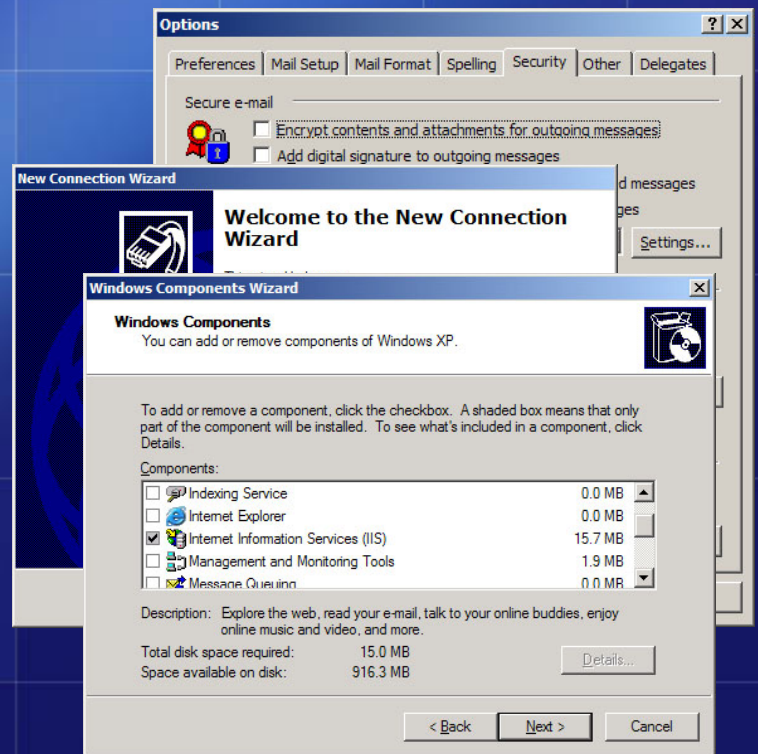
- n .exe receipt, script access disabled

## Windows XP

- n Internet Connection Firewall

## Major products to ship secure by default

- n .NET server, IIS6, SQLnext, Office 11
- n Backporting to Windows 2000, IIS5.x and earlier



# Secure in Deployment

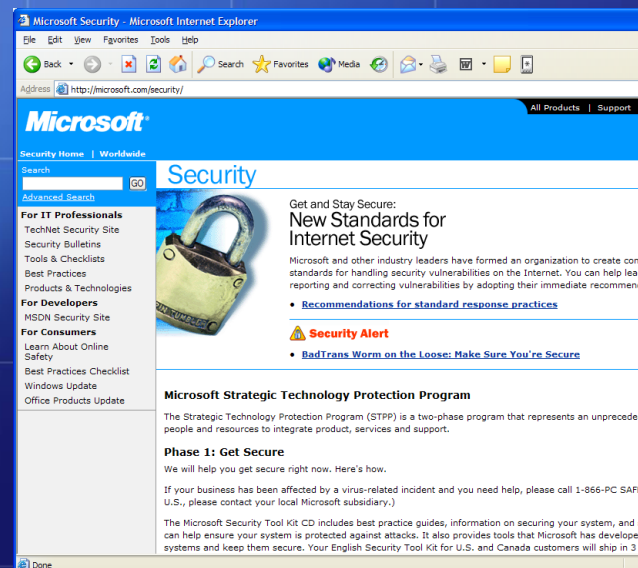
## STPP - Get Secure

- n Microsoft Security Toolkit
- n Microsoft Baseline Security Analyzer
- n Security Assessment Program
- n Deployment, update, lockdown tools

## STPP - Stay Secure

- n Windows 2000 Security Rollup
- n Windows 2000 SP3
- n Microsoft Update Corp Edition

Microsoft Security Response Center  
Systems Integrator Source Licensing Program  
Windows Update



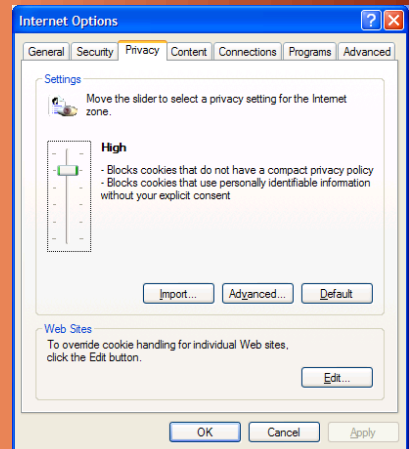
# Privacy: Products & Process

## Product design

- n P3P support in IE 6
- n Kerberos for Passport
- n Anonymous XP activation
- n MSN 8 tools to manage what kids access

## Business practices

- n MSN shows users data held on them
- n FIP, GLB, Safe Harbor
- n Third party audits
- n Privacy Directive and Handbook
- n Privacy Health Index



# Reliability

## Five Nines Windows XP

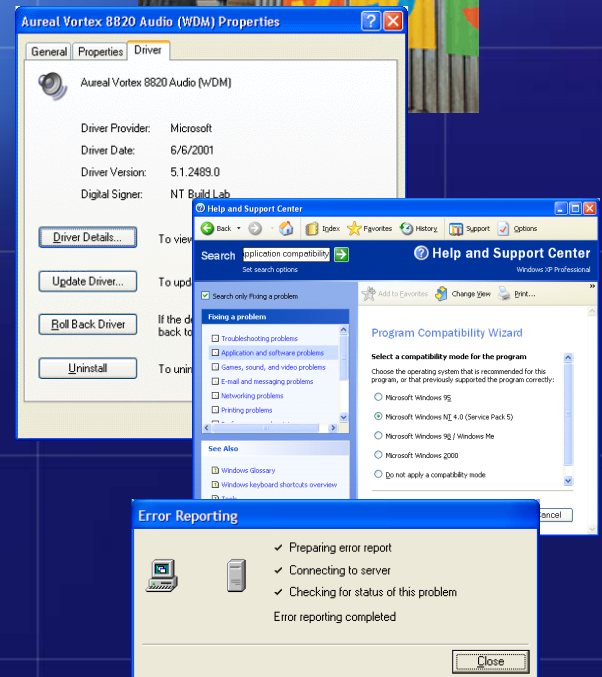
- n Driver management
- n Shared DLL support
- n Improved installation, update, backup, repair, recovery

## Product Quality Initiative

- n Documentation, feedback, measurement, integration

## Error reporting

- n Office fixed 40% of crashes for SP1
- n VS fixed 57% crashes in beta
- n Vendor web site



# Difficult Problems...

## Processors

- n Too many, spreading too fast, chaotic mega-system behaviors

## Programming

- n Too error-prone

## People

- n Too few knowledgeable ones, and losing ground
- n Complexity/speed too fast for people to comprehend
- n Unmanaged systems

## Policy

- n Legal frameworks & norms lag technological change
- n No common industry vocabulary

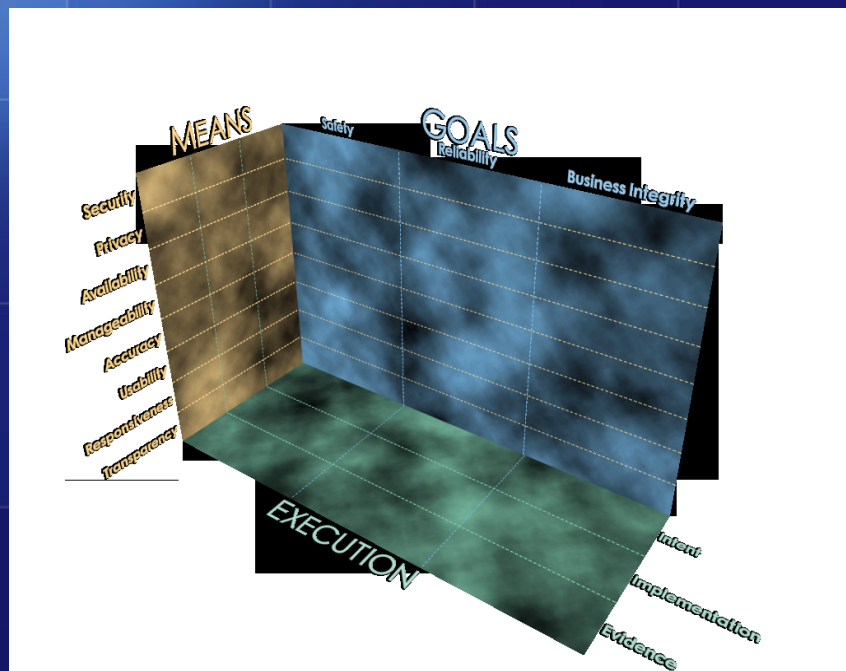




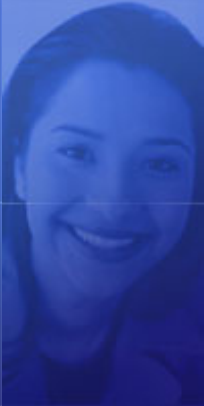
# If You Can't Measure It, You Can't Manage It

Institutionalize our commitment  
to keep focus and momentum

- n Recurrent, relevant measurements
- n Actionable trend analysis
- n Senior position
- n Working councils



# Steps along the Way



New  
Focus

BillG memo, stand-downs

Begin  
Roll-out

.NET server launches, WS standards

Built  
Trustworthy

Longhorn, DRM, Palladium

TWC  
realized

New critical infrastructure



# Summary

Trustworthy systems are key to taking  
Microsoft to the next level

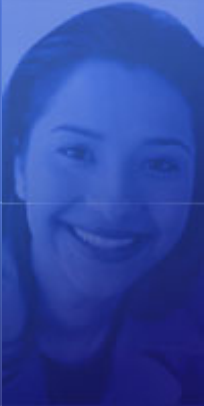
We need to sell computing systems so safe  
and reliable that people can take them for  
granted

It will be a long journey  
Everybody plays a part

The Microsoft logo is displayed in its classic, stylized font, centered within a white rectangular box.

© 2002 Microsoft Corporation. All rights reserved.

This presentation is for informational purposes only. Microsoft makes no warranties, express or implied, in this summary.



# Discussion

Contact:  
[karimk@microsoft.com](mailto:karimk@microsoft.com)

The Microsoft logo is centered within a white rectangular box. The logo itself is rendered in a black, italicized, sans-serif font with a registered trademark symbol (®) at the end. The background of the slide is a dark blue grid pattern.

© 2002 Microsoft Corporation. All rights reserved.  
This presentation is for informational purposes only. Microsoft makes no warranties, express or implied, in this summary.