



# **WIPO Services for Access to Information and Knowledge**

**Geneva  
19 May  
2016**

Irene Kitsara

IP Information Officer, Access to Information and Knowledge  
Division

# Access to Information and Knowledge Division

## ■ Background:

- Still digital divide and knowledge gap between developed and developing countries
- Developing Countries (DCs) and LDCs challenge of accessing technological information included in patent documents and scientific literature
- Development Agenda Projects: Developing tools for facilitating access to patent information and scientific literature

## ■ Areas of work:

- Access to patent and scientific literature databases and search tools
- Capacity building on patent search and analysis
- Support of innovators in DCs through access to locally based technology information and on-site provision of related services

# Access to Information and Knowledge Division

## Services and Tools:

- Technology and Innovation Support Centers (TISC) program
- ARDI
- ASPI
- Patent Landscape Reports
- Patent Analytics Activities
- Inventor Assistance Program (IAP)
- Patent Register Portal

# TECHNOLOGY AND INNOVATION SUPPORT CENTERS (TISC)

# TISC Program: Current status



- Started as a Development Agenda Project in 2009
- 50 national projects launched
- Over 420 centers opened worldwide
- Over 400'000 innovator inquiries supported annually

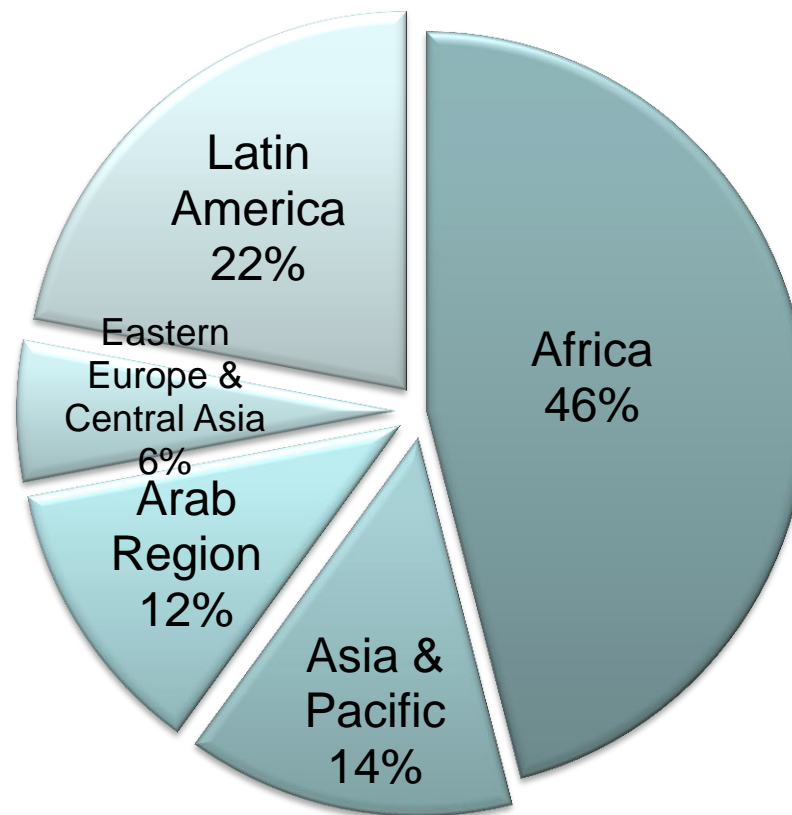
Data current as of February 2016

# National projects launched

- Algeria
- Bangladesh
- **Benin**
- **Burundi**
- Cambodia
- **Cameroon**
- **Central African Republic**
- Colombia
- **Congo, Democratic Republic of**
- **Congo, Republic of**
- Costa Rica
- **Côte d'Ivoire**
- Cuba
- Dominican Republic
- Ecuador
- **Egypt**
- El Salvador
- **Ethiopia**
- Georgia
- Guatemala
- Honduras
- **Kenya**
- Kyrgyzstan
- **Madagascar**
- Malaysia
- **Mali**
- Mongolia
- Morocco
- **Mozambique**
- Nicaragua
- **Niger**
- **Nigeria**
- Oman
- Panama
- Philippines
- Russian Federation
- **Rwanda**
- **Sao Tomé and Príncipe**
- Saudi Arabia
- **Senegal**
- **South Africa**
- Sri Lanka
- **Tanzania**
- **Togo**
- Tunisia
- **Uganda**
- Uruguay
- Viet Nam
- **Zambia**
- **Zimbabwe**

# Regional TISC network distribution

**Chart Title**



\* Istanbul Declaration: establishment of TISCs in LDCs in 2010-2020 (Item 27)

# Technology and Innovation Support Centers (TISC) - Services



Ibidunni Annette Roberts has used the services of the WIPO-backed TISC in Abuja, Nigeria, to develop and market her new beauty products. (Photo: Gbemiga Olamikan)

- Core services:
  - Access to patent and non-patent databases
  - Assistance in using databases
- Additional services (based on user need and office capacity):
  - Technology search services
  - Patent analytical services
  - Awareness-raising and training services



# WIPO Support: Capacity Building



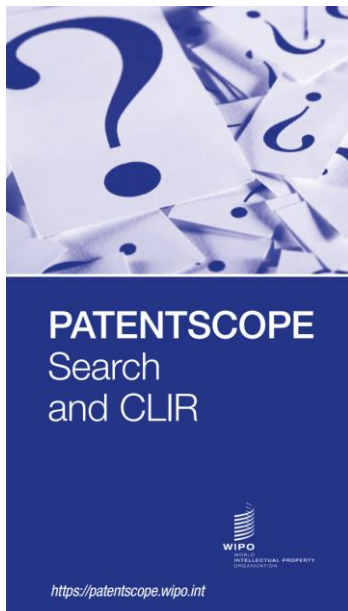
Technology and Innovation Support Centre (TISC) Training held at Mbarara University of Science and technology on May 13, 2015

- On-site training – including training of trainers
  - WIPO Academy Distance learning courses (DLCs)
  - Webinars
- 
- Since 2009: Over 6000 participants trained on-site
  - Since 2011: Over 3000 participants registered through national TISCs for WIPO Academy DLCs

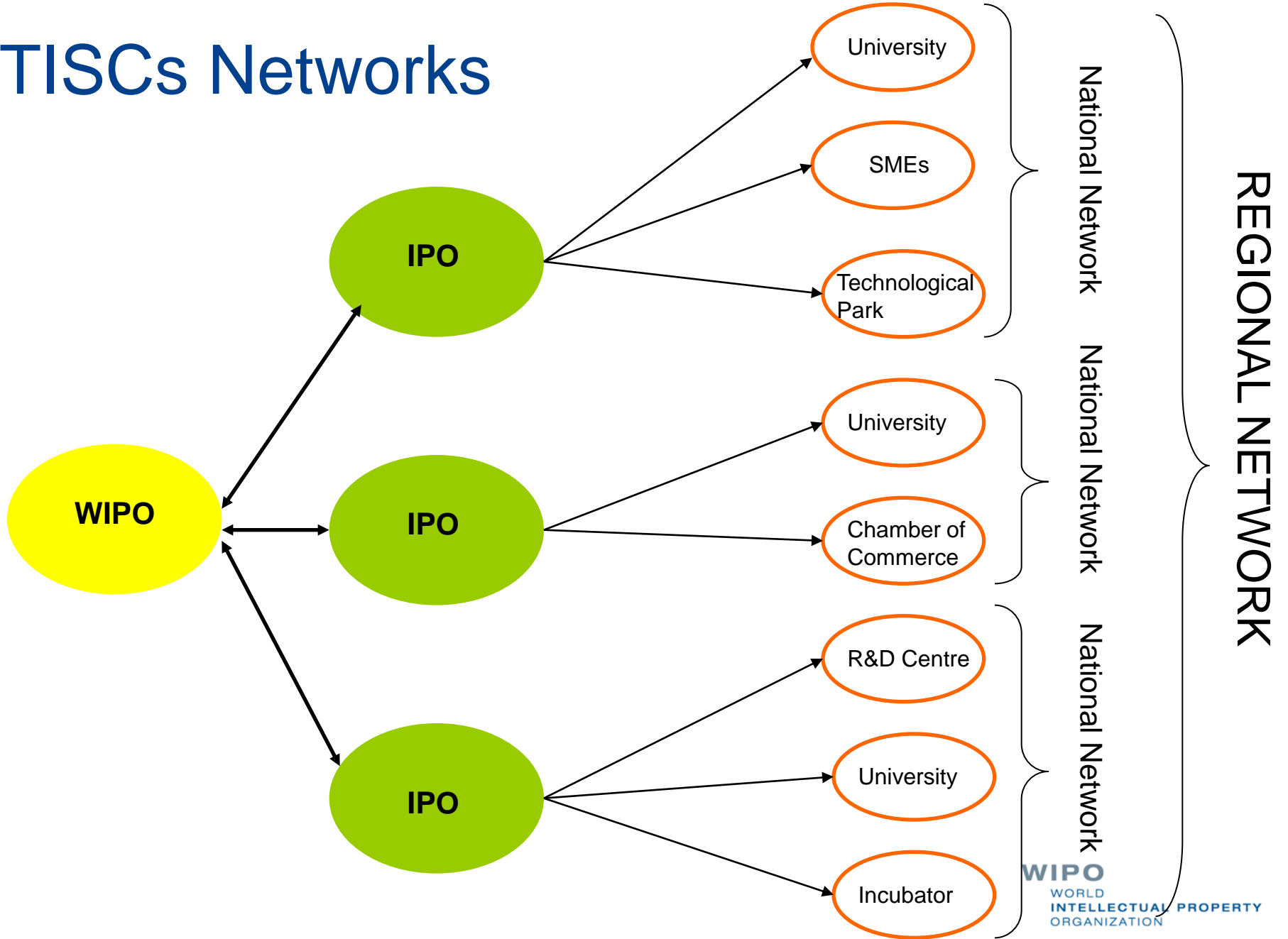
# WIPO Support: Resources

- TISC Implementation Guide
- Webinars
- Guides
- E-Tutorial on using and exploiting patent information

Webinars
Overview of the Patent Cooperation Treaty (PCT) to the TISC
WIPO Standards (June 16, 2015) <a href="#">PDF</a>
Research4Life and ARDI programs (November 26, 2014) <a href="#">PDF</a>
Business use of patent information (May 2014) <a href="#">PDF</a>
The eTISC platform: Functionalities (October 24, 2013) <a href="#">PDF</a>
Patent Classification: Structure and Use (September 12, 2013) <a href="#">PDF</a>
Patent Classification Advantages (July 11-12, 2013) <a href="#">PDF</a>
Fundamentals of using patent databases (June 13, 2013) <a href="#">PDF</a>



# TISCs Networks



# WIPO Support: Networking

- Regional Cooperation: Linking emerging and established TISC networks to share experiences and best practices
  - Services (e.g. shadow searches)
  - Study visits
  - On-the-job training
  - Mentorship
- Regional Networking in Africa (experience-sharing conferences/workshops), in cooperation with ARIPO and OAPI:
  - 2 regional conferences in Ethiopia
  - 1 regional conference in Cameroon
  - 1 regional conference in Zimbabwe

# eTISC Platform

The screenshot shows the eTISC platform interface. At the top, the URL is [etisc.wipo.org](http://etisc.wipo.org). The user is logged in as Irene Kitsara. The navigation menu includes: HOME PAGE, MY PAGE, MEMBERS, GROUPS, FORUM, NEWS, EVENTS, **WEBINARS**, ASK THE EXPERT, CONTACT, and MANAGE. The 'WEBINARS' link is highlighted with a red box. The main content area features a world map with the text: "Click the map to access the *Directory of Technology and Innovation Support Centers* Map source". The left sidebar contains sections for: Irene Kitsara (with links for Sign Out, Inbox, Friends, and Settings), Patent database systems and tools (listing PATENTSCOPE, National and regional patent database systems, National and regional patent registers, and International Patent Classification), Publications (listing TISC implementation, Patent search, Patent databases, and Intellectual property), and Related programs and activities (listing Access to Specialized Patent Information).

<http://etisc.wipo.org>



#### Africa IP Forum

28 members

Latest Activity: Jul 3, 2015

A forum for sharing and discussing IP issues in Africa.



#### TISC Nigeria

13 members

Latest Activity: Aug 20, 2013

This Centre, which is sited at the Ministry of Trade & Investment, Abuja, is the 6th TISC in sub-Saharan Africa. The World Intellectual...



#### TISC Ethiopia

10 members

Latest Activity: Aug 8, 2014

Please everybody use this forum.



#### TISC Uganda

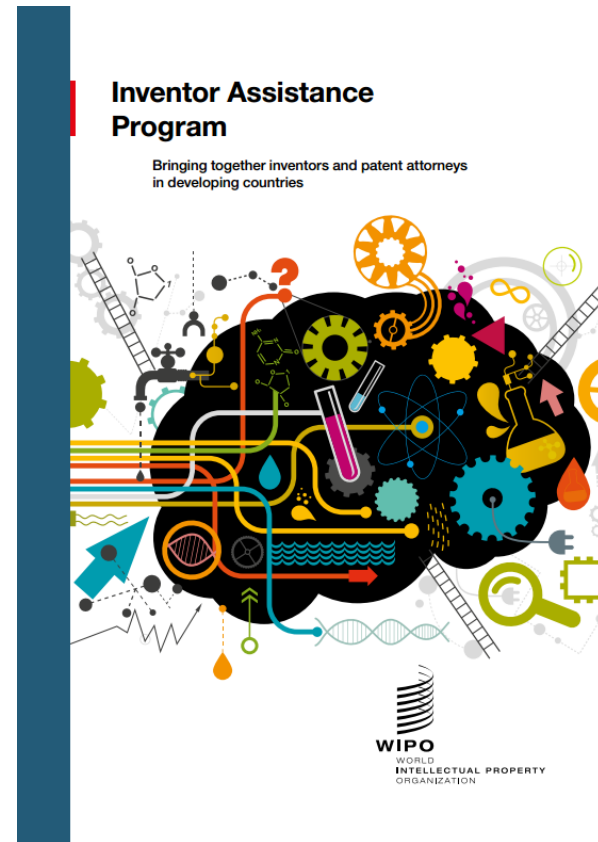
10 members

Latest Activity: Mar 22, 2013

This is a composition of people dealing with aspects of intellectual property. It consists of URSB members, UIRI, universities such as Makerere...

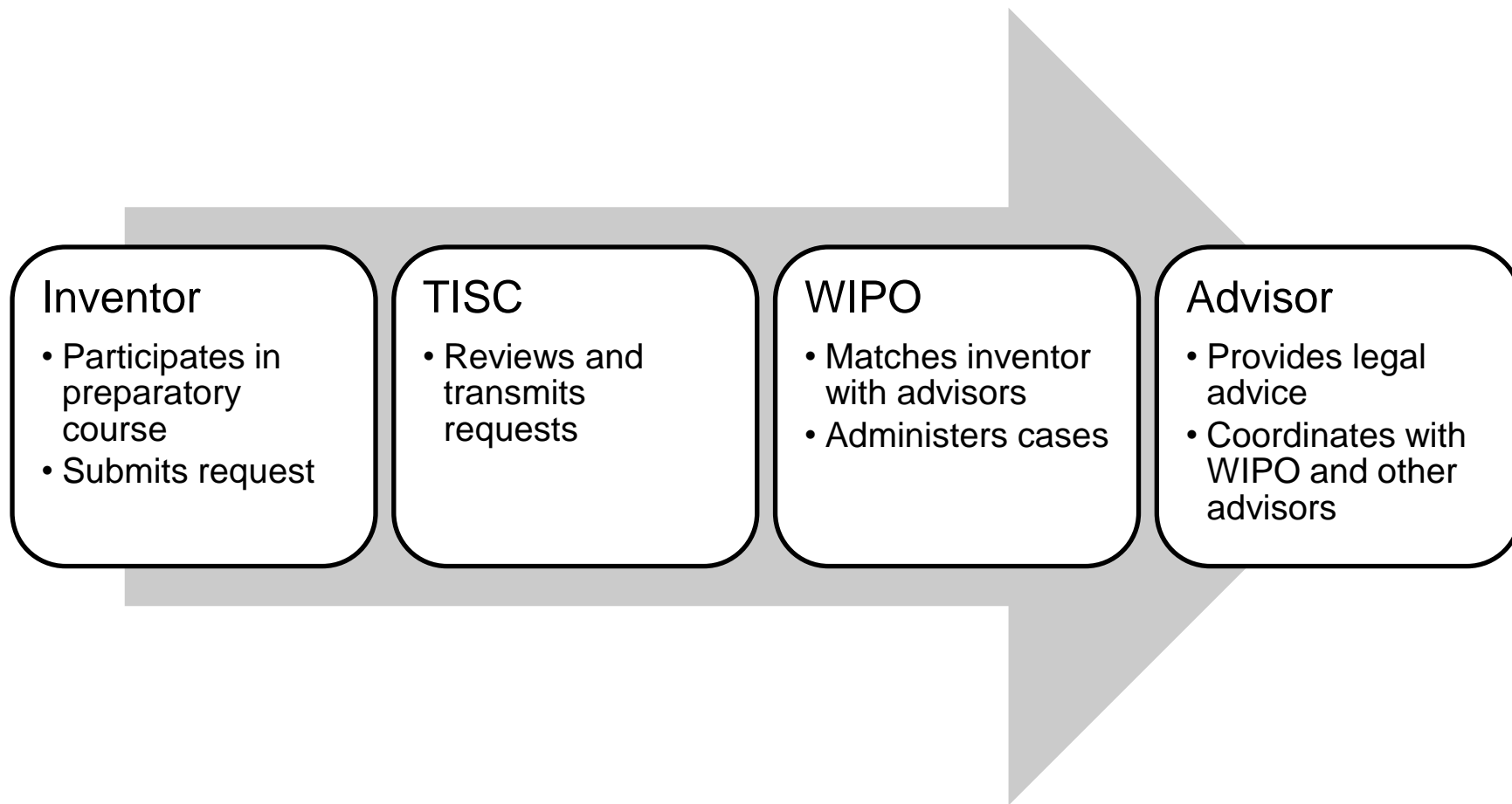
# WIPO-WEF Inventor Assistance Program

- Legal assistance in filing and prosecution of patent applications for under-resourced inventors and small enterprises
- Pilot projects in Colombia, Morocco, and Philippines



<http://www.wipo.int/iap>

# IAP: Process



# **ACCESS TO PATENT AND SCIENTIFIC LITERATURE: ASPI AND ARDI**



# ASPI

ACCESS TO SPECIALIZED PATENT INFORMATION

## ■ Partnership with 6 patent database service providers



(Photo: LexisNexis).

### TotalPatent

Search the largest online collection of enhanced first-level patent data. Summary

[PDF](#)



(Photo: Minesoft).

### PatBase

One of the most relied-upon patent databases available, used daily by patent professionals around the world as their primary search tool. Summary

[PDF](#)



(Photo: Questel).

### Orbit.com

Portal for patent, design, and legal professionals looking for a comprehensive coverage and powerful tools. Summary.



(Photo: Thomson Reuters).

### Thomson Innovation

The world's most comprehensive IP research and analysis platform. Summary

[PDF](#)



(Photo: WIPS Global).

### WIPS Global

Worldwide patent information online service. Summary

[PDF](#)



(Photo: Gridlogics).

### PatSeer

Redefining Patent Research, Analysis, Project Management & Collaboration.

Summary [PDF](#)

[www.wipo.int/aspi](http://www.wipo.int/aspi)

WORLD  
INTELLECTUAL PROPERTY  
ORGANIZATION

# ASPI - Eligibility

## Group 1 (48)

### Least developed countries, as defined by the United Nations

Patent offices as well as academic and research institutions can receive access to all products at no cost. A maximum of one account can be obtained for each patent database service selected.

Afghanistan

Angola

Bangladesh

Benin

Bhutan

Burkina Faso

Burundi

Cambodia

Central African Republic

Chad

Comoros

Democratic Republic of the Congo

Djibouti

Equatorial Guinea

Eritrea

Ethiopia

Gambia

Guinea

Guinea-Bissau

Haiti

Kiribati

Lao People's Democratic Republic

Lesotho

## Group 2 (45)

### Selected middle income countries, as defined by the World Bank

Patent offices as well as academic and research institutions receive access at a nominal cost of 1000 Swiss francs for each account per calendar year (from January through December). A maximum of three accounts can be obtained for each patent database service selected (one account only during the free trial period).

Albania

Armenia

Azerbaijan

Belarus

Bolivia (Plurinational State of)

Cameroon

Cape Verde

Colombia

Congo

Côte d'Ivoire

Dominican Republic

El Salvador

Fiji

Georgia

Ghana

Guatemala

Guyana

Honduras

Jamaica

Kazakhstan

Kenya

Kosovo

## Group 3 (22)

### Other selected countries

Patent offices only receive access at a nominal cost of 3000 Swiss francs for each account per calendar year (from January through December). A maximum of three accounts can be obtained for each patent database service selected.

American Samoa

Antigua and Barbuda

Bahrain

Barbados

Belize

Botswana

Costa Rica

Dominica

Gabon

Grenada

Libya

Lithuania

Mauritius

Mayotte

Oman

Palau

Panama

Romania

Seychelles

Saint Kitts and Nevis

Saint Lucia

Trinidad and Tobago

- Free or low-cost access to scientific and technical content for 116 least developed and developing countries
- Partnership with 17 major publishers
- Over 6,000 journals
- Over 19,000 books and reference works

# Programs

ARDI  
Research for Innovation



World Intellectual Property Organization

HINARI  
Research in Health



World Health Organization

AGORA  
Research in Agriculture



Food and Agriculture Organization of the United Nations

OARE  
Research in the Environment



United Nations Environment Programme

# ARDI - Eligibility

## Eligible countries

### Group A (free access) <sup>1</sup>

- Afghanistan
- Angola
- Bangladesh
- Benin
- Bhutan
- Burkina Faso
- Burundi
- Cambodia
- Cameroon
- Cape Verde
- Central African Republic
- Chad
- Comoros
- Congo
- Côte d'Ivoire
- Democratic People's Republic of Korea
- Democratic Republic of the Congo
- Djibouti
- Equatorial Guinea
- Eritrea
- Ethiopia
- Gambia
- Ghana
- Guatemala
- Guinea
- Guinea-Bissau
- Haiti
- Honduras
- Iraq
- Kenya
- Kiribati
- Kyrgyzstan
- Lao People's Democratic Republic
- Lesotho
- Liberia
- Madagascar
- Malawi
- Mali
- Mauritania
- Morocco
- Mozambique
- Myanmar
- Namibia
- Nepal
- Nicaragua
- Niger
- Nigeria
- Papua New Guinea
- Rwanda
- Samoa
- São Tomé and Príncipe
- Senegal
- Sierra Leone
- Solomon Islands
- Somalia
- South Sudan
- Sudan
- Swaziland
- Tajikistan
- Timor-Leste
- Togo
- Tokelau
- Tuvalu
- Uganda
- United Republic of Tanzania
- Uzbekistan
- Vanuatu
- Viet Nam
- Yemen
- Zambia
- Zimbabwe

### Group B (low cost access)

- Albania
- Algeria
- Argentina
- Armenia
- Belize
- Bolivia (Plurinational State of)
- Bosnia and Herzegovina
- Botswana
- Cook Islands
- Dominica
- Ecuador
- El Salvador
- Fiji
- Gabon
- Georgia
- Grenada
- Guyana
- Jamaica
- Jordan
- Kosovo
- Libya
- Maldives
- Marshall Islands
- Mauritius
- Micronesia (Federated States of)
- Mongolia
- Montenegro
- Nauru
- Niue
- Palau
- Paraguay
- Republic of Moldova
- Saint Helena
- Saint Kitts and Nevis
- Saint Lucia
- Saint Vincent and the Grenadines
- Seychelles
- Sri Lanka
- Suriname
- Syrian Arab Republic
- The Former Yugoslav Republic of Macedonia
- Tonga
- Tunisia
- Turkmenistan
- Ukraine
- West Bank and Gaza Strip

# Use of ARDI and ASPI in Africa

- LDCs and a number of DCs: access free of charge
- Main and most active ARDI and ASPI users: universities
- More than 60% of the registered institutions for ARDI are based in Africa
- Rather low use of ARDI and ASPI potential
- Major uptake of ARDI: English-speaking countries
  - Need for further awareness raising and promotion
  - Language of journals
  - Importance of local stakeholders in promotion and use of these tools to achieve their full potential

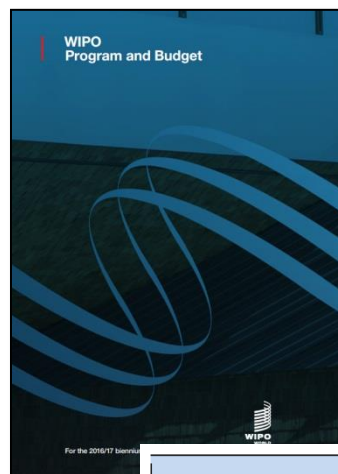
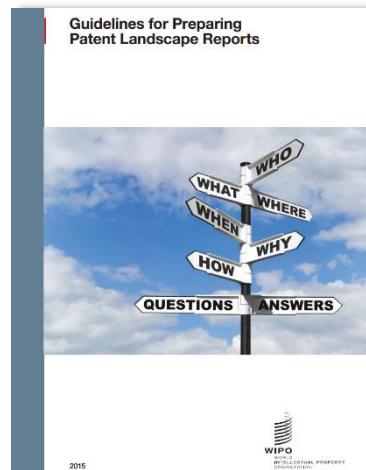
# Patent Landscape Reports (PLR) and Patent Analytics

- PLR: Patent-based analysis in various areas of technology to identify patenting and innovation trends, emerging technologies, key players, geographical distribution of patent protection, research and investment opportunities
- 2010-2016: Preparation of reports in specific topics, in areas of interest for DCs and LDCs



# Patent Analytics and TISC – Way Forward

- Capacity building of TISC staff and innovators in the area of patent analytics
- Learning material in the area of patent analytics
- Provision of patent analysis services in the future by TISCs



Expected Results	Performance Indicators	Baselines	Targets
	No. of TISC Clinic requests submitted to TISCs	n/a (new)	10
	No. of TISCs offering patent analytical services	n/a (new)	5



Thank you for your attention!

[Irene.Kitsara@wipo.int](mailto:Irene.Kitsara@wipo.int)