



Rwanda statistics in respect of intellectual property applications

Sub-Regional Workshop on the Development and
Effective Use of Intellectual Property Statistics for
ARIPO Member States

from 14-16 September 2016



Content

- COUNTRY INFORMATION
- INSTITUTIONAL FRAMEWORK
- IP STRUCTURE
- IP PROCESSING
- STATISTICS
- USE OF IP STATISTICS
- CHALLENGES

1. COUNTRY INFORMATION

○ Country information



Con't

- **population:** An estimate Rwanda's population to be 11,533,446 in 2016
- **Superficy:** 26,338 square kilometers
- **Climate:** Rwanda's high elevation makes the climate temperate; rainy seasons (febr-May, Sept- Dec) alternating with sunny seasons.

INSTITUTIONAL FRAMEWORK

- **Policy makers (art 11 , art 12):** Ministry of Trade and Industries and Ministry of Sport and Culture;
- **IP implementor (art 13):** office of the Registrar General/ Rwanda Development Board;



Con't

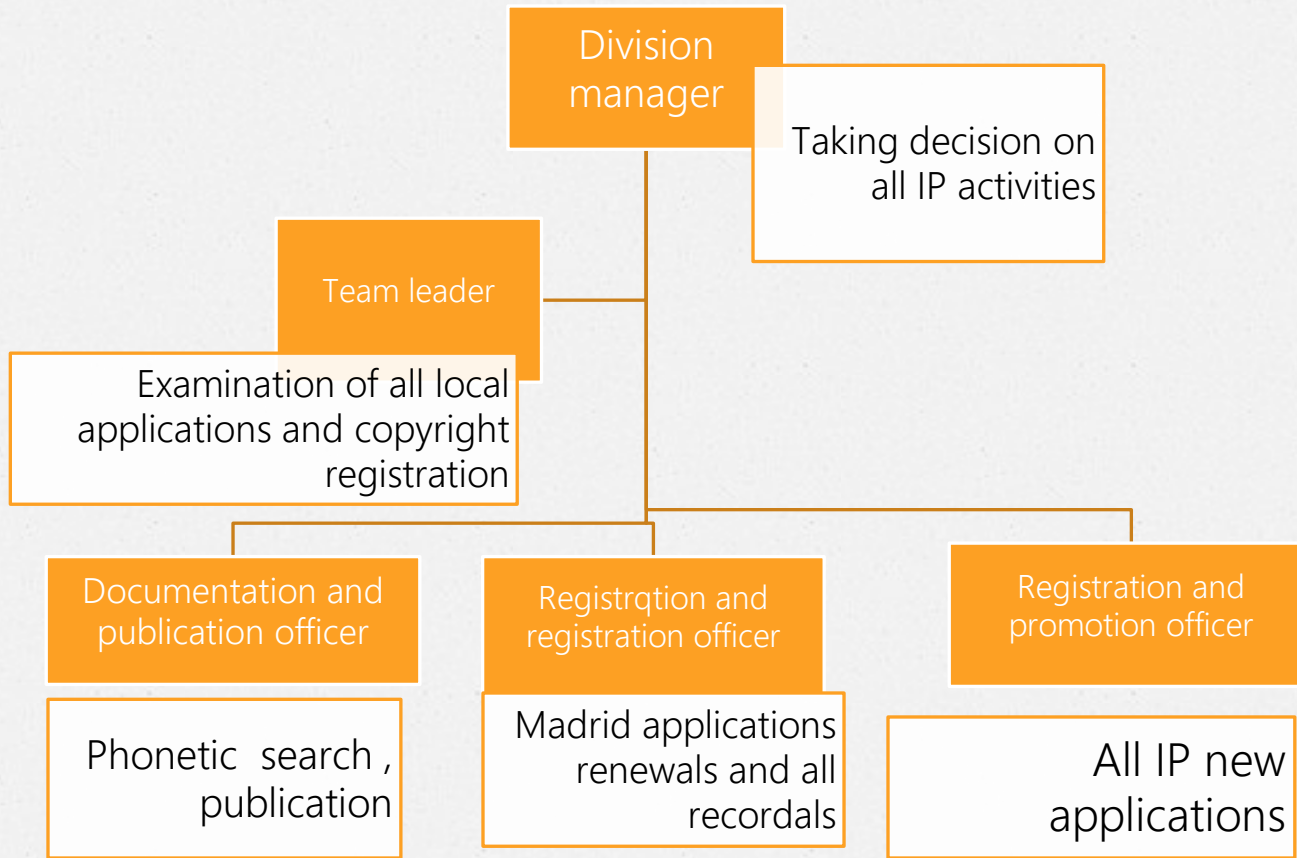
Implementor mandates:

- Granting authentic industrial property titles provided by law;
- Registering of applications for titles of industrial property, publishing, calculating and extending their deadlines and scope and managing all related matters;
- Promoting the spirit of creativity and technological innovation;

Con't

- Encouraging the inventive activity and creation of new technologies and their industrial or commercial use;
- Arbitrate all disputes arising from industrial property.

IP structure



IP PROCESSING

1. What are protected?

○ **Industrial Property**

- Patents (Invention)
- Utility Models (Innovation)
- Trademarks (certification, collective, trade name)
- Industrial Designs
- Geographical Indications

Con't

○ Copyright

- Literature work;
- Artistic work;
- Scientific work;
- Handcraft;
- National folklore;

Use of IP statistics

- The IP statistics are used by other local stakeholders (Ministries, Agencies and private sector);
- The IP Publication is done every month and published on RDB website, accessible to the public if needed;
- IP statistics are annually reported to ARIPO and WIPO, using the required format submitted by them

Statistics

APPLICATIONS FROM 2014-2015

INDUSTRIAL PROPERTY	STATUS	2014	2015
TRADEMARKS APPLICATIONS	Residents	101	246
	Non-residents	495	413
	registrations	596	659
PATENTS APPLICATIONS	Residents	5	6
	Non-residents	7	0
	registrations	0	0
UTILITY MODEL APPLICATIONS	Residents	1	5
	Non-residents	0	0
	registrations	0	0
INDUSTRIAL DESIGN APPLICATIONS	Residents	2	5
	Non-residents	5	0
	registrations	0	0
TRADITIONAL KNOWLEDGE APPLICATIONS	0	0	0
GEOGRAPHICAL INDICATION APPLICATIONS	0	0	0

Challenges

- Recovering of destroyed documents during the Genocide;
- The implementation of IPAS version is not yet finished, allowing the users to have a better reporting system
- The office is understaffing compared to the development of IP and the increase of IP applications (Madrid, Harare and local applications)

MURAKOZE

