

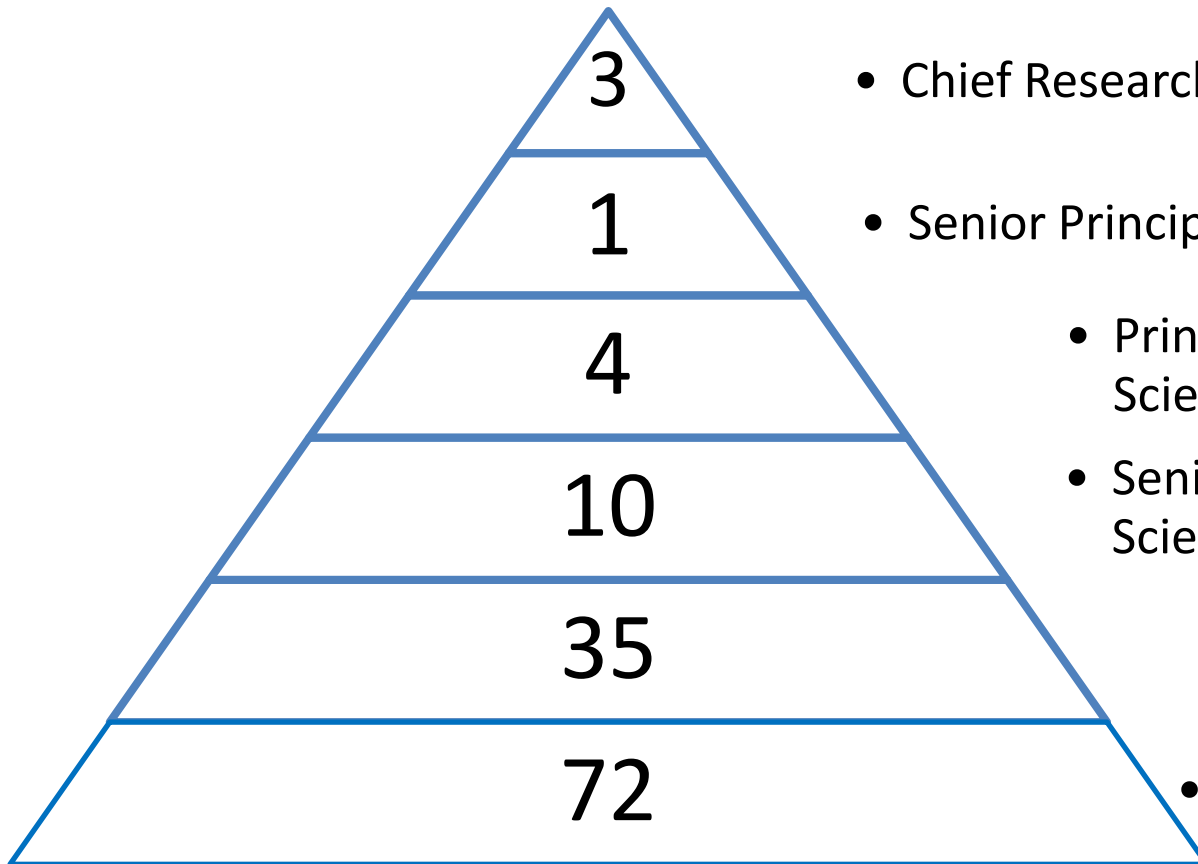


KENYA INDUSTRIAL RESEARCH AND DEVELOPMENT INSTITUTE (KIRDI)

Kenneth Chelule, PhD



Research Scientists



- Chief Research Scientist
- Senior Principal Research Scientist
- Principal Research Scientist
- Senior Research Scientist
- Research Scientist I
- Research Scientist II

125 Research Scientists

Research Projects

The RTI has undertaken over **150** projects of which **30%** have been successfully completed whereas the rest are ongoing. Notable products developed include:



Medical Equipment – Hospital beds



Fabrication Equipment – Arc Welding



Agri-machinery



Value Addition

Research



Soap



Detergents

Since 2013 the institute (through RTI Department) has partnered with the Export Promotion Council to support over **30** MSME to do add value to their products

Innovations

The Next Big Thing Competition (2015) by Business Daily



Finalist in the Agri-Business Category

The project team member: A Kisoryo, A Mburu and K Chelule.

Hair Extensions



Natural/Environmentally Friendly





Patents/Utility Model/Trademarks

1990-2012

Patent Application: **1703**
 Utility Model : **311**
 Industrial Designs: **1288**
 Trademarks : **70,000**

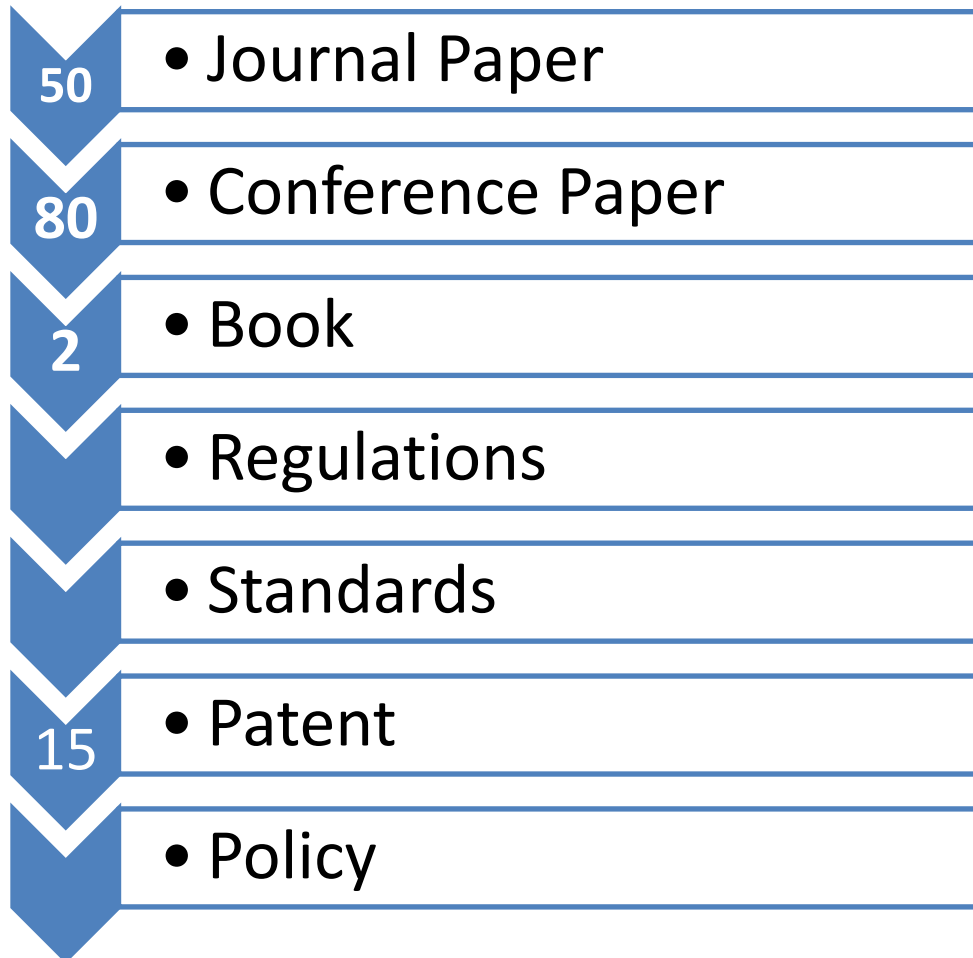
1995-2003	University Patents :	
	Japan (5,506), China (13,353), Korea (5,272), Singapore (993), India (467) and Thailand (139) and Kenya (1)	

Application Type	Jul 2008-Jun 2009	Jul 2009-Jun 2010	Jul 2010-Jun 2011
Residents	58	58	125
Non-residents	2	7	0
PCT applications	112	100	130

2012 to 2014 (KIRDI Applications)
20 applications made to date during the period
 Of which 5 are my innovations



Publications





RESEARCH IN KENYA

- **Universities**
- **Research Organization**
 - **KIRDI**
 - **Innovations Hubs**



FUNDING

- **Government Allocation**
 - **2%**
 - **Administered by NRF**
 - **Private (donors and private companies)**



RESEARCH IMPLEMENTING AGENTS of RESEARCH OUTPUT



- **RBO**
- **Universities**
- **Kenya National Agency (KENIA)**
- **Kenya Industrial Estate (KIE)**
- **Private sector**



PATENT MANAGEMENT

- **Kenya Industrial Property Institute**
- **KEPHIS**
- **Copyright Society of Kenya**



POLICY FRAMEWORK

- **Vision 2030**
 - Knowledge based economy by 2030
 - Based on manufacturing
- **Medium Term Plan – 5 Yr Plan**



IMPLEMENTATION **FRAMEWORK**

- **Performance Contract**
- **Sector Performance Standard**
- **Roles of institution**



IMPLEMENTATION FRAMEWORK

- **Research**
- **Prototyping**
- **Dissemination**
 - **Common Manufacturing Facility (CMF)**
 - **Technology Transfer**
 - **Incubation**



COMMITMENT(S)

- **National Industrial Information Centre**
- **Research Technology and Innovation Policy**
- **Research Scientist Focus**
- **Patent/Publication**