

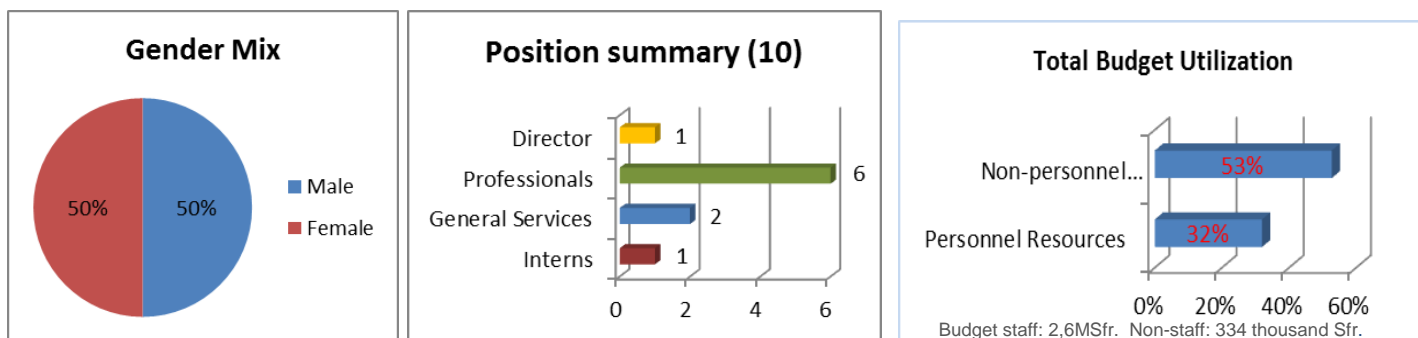
INTERNAL OVERSIGHT DIVISION (IOD) DASHBOARD

January – June 2016

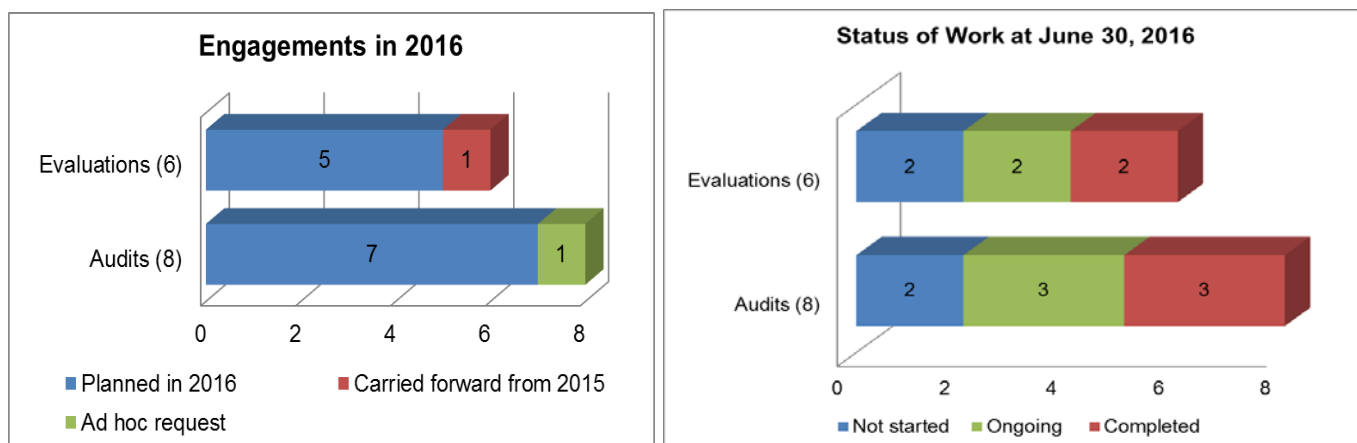
CURRENT OVERSIGHT ACTIVITIES AT A GLANCE

REF	Task	Phase
EVAL 2016-01	Evaluation of the International Union for the Protection of New Varieties of Plants (UPOV)	Reporting
EVAL 2016-05	Evaluation of Program 13 - Global Databases Service	Ongoing
IA 2016-07	Audit of WIPO LEX	Ongoing
IA 2016-04	Audit of Project Management	Ongoing

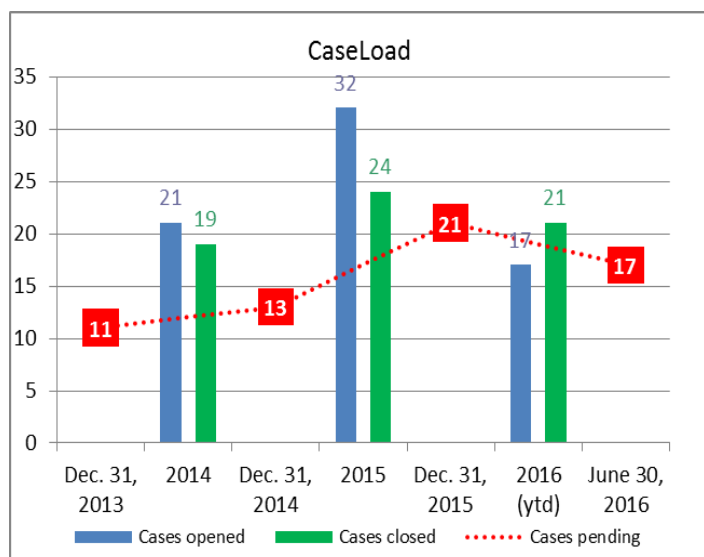
IOD HUMAN AND FINANCIAL RESOURCES IN 2016



AUDIT AND EVALUATION ACTIVITIES FIRST SEMESTER OF 2016



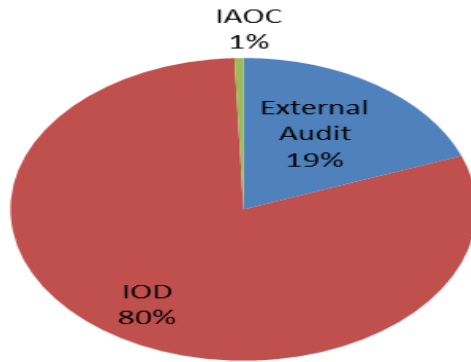
INVESTIGATIONS ACTIVITES FIRST SEMESTER OF 2016



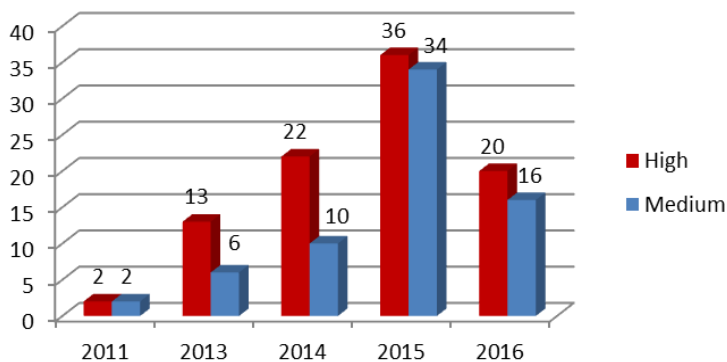
Category	2016
Abuse of work time	1 (6%)
Benefits and Entitlements Fraud	1 (6%)
Harassment/Discrimination/Abuse of Authority	4 (24%)
Irregular HR practices	1 (6%)
Misuse of ICT resources	0 (0%)
Other fraudulent, corrupt or abusive practices	5 (29%)
Statements, pronouncements and activities incompatible with the obligations of an international civil servant	4 (24%)
Unauthorized communication of information	0 (0%)
Wrongdoing by candidate during recruitment selection process	1 (6%)
Total	17 (100%)

WIPO OPEN RECOMMENDATIONS STATUS AT JUNE 30, 2016

Recommendation Source



Open Recommendations by Year Issued and by Priority



QUICK STATS

- Open recommendations at June 30, 2016 – **161** (High 93; Medium:68)
- Total Recommendations made during the first semester of 2016 - **48**
- Recommendations closed during the first semester of 2016 – **47**
- Reports issued during the first semester of 2016:
 - Evaluations - **2**
 - Audits - **3**
 - Investigations – **10**
 - Management Implication Reports – **3**
- Customer Satisfaction – Cumulative Average Rate Received at June 30, 2016:

Post assignment Surveys	After One Year Surveys
84%	75%

Recommendations by Program and by Priority (161)

