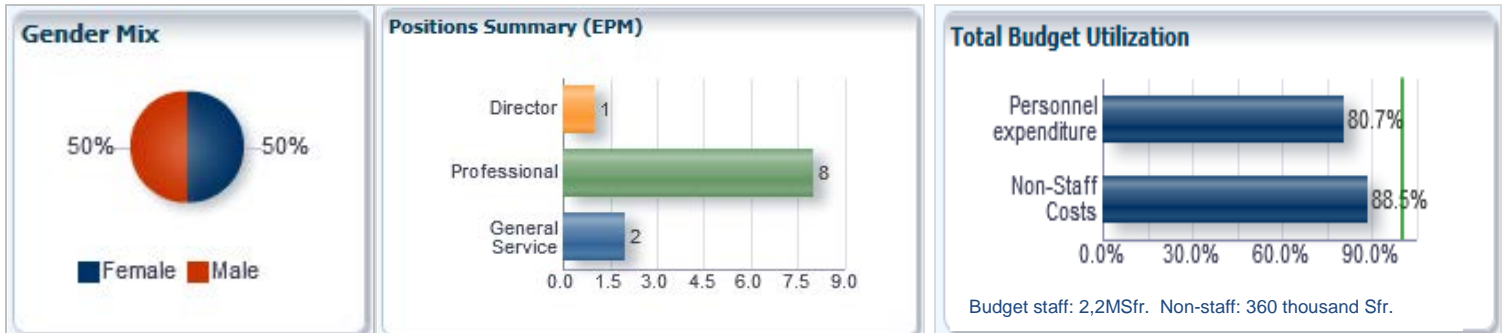


INTERNAL OVERSIGHT DIVISION (IOD) DASHBOARD January – December 2015

CURRENT OVERSIGHT ACTIVITIES AT A GLANCE

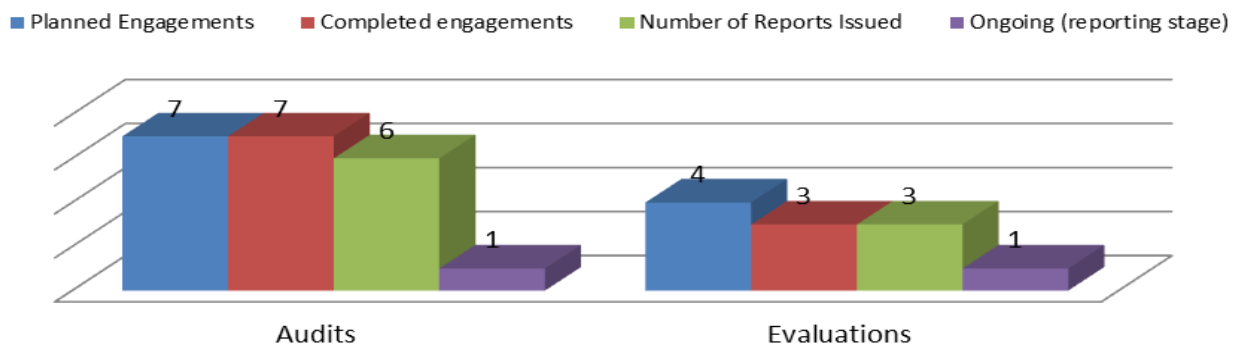
REF	Task	Phase
IA 2015-07	Audit of staff Performance Management	Reporting
EVAL 2015-03	Evaluation Policy and Evaluation Manual	Ongoing
EVAL 2015-02	Evaluation of WIPO's assistance to Least Developed Countries (LDC)	Reporting

IOD HUMAN AND FINANCIAL RESOURCE IN 2015



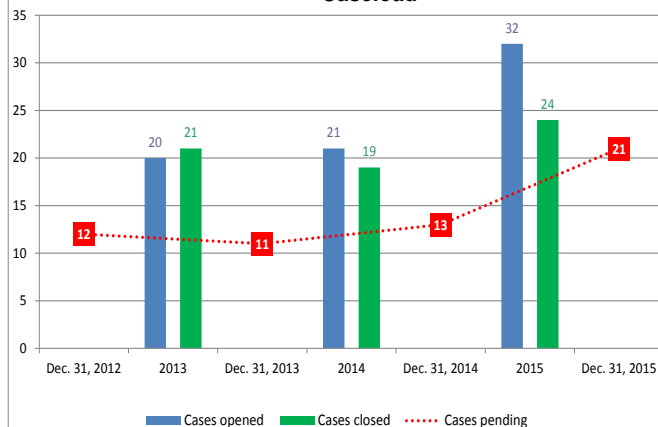
AUDIT AND EVALUATION ACTIVITIES IN 2015

Status of Work at December 31, 2015



INVESTIGATIONS ACTIVITES IN 2015

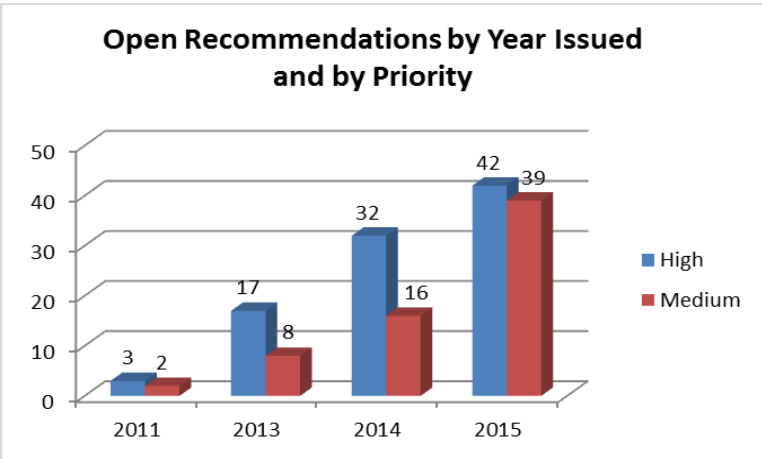
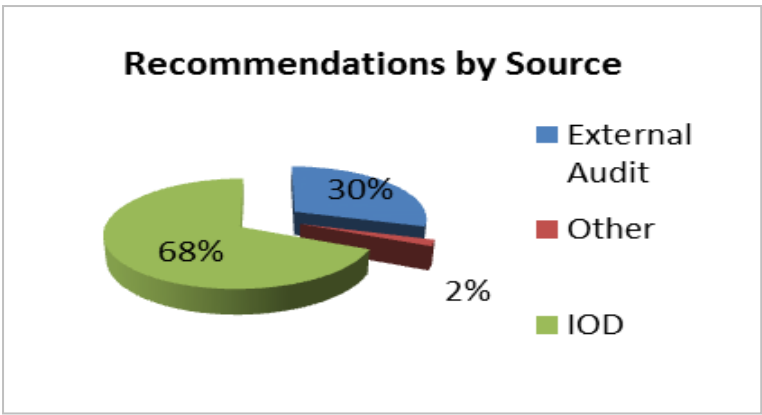
Caseload



Complaints Received in 2015

Categories	2015	
Harassment/Discrimination/Abuse of Authority	8	(25%)
Abuse of work time	6	(19%)
Other fraudulent, corrupt or abusive practices	6	(19%)
Unauthorized communication of information	3	(9%)
Wrongdoing by candidate during recruitment selection process	3	(9%)
Benefits and Entitlements Fraud	2	(6%)
Irregular HR practices	2	(6%)
Misuse of ICT resources	1	(3%)
Statements, pronouncements and activities incompatible with the obligations of an international civil servant	1	(3%)
Total	32	(100%)

WIPO OPEN RECOMMENDATIONS STATUS AT DECEMBER 31, 2015



QUICK STATS

- Open recommendations at January 1, 2015 – 180
- Total Recommendations made in 2015 - 107
- Recommendations closed - 128
- Open recommendations at December 31, 2015 – 159** (High:94 Medium:65)
- Reports issued in 2015:
 - Evaluations - 3
 - Audits - 6
 - Investigations – 6
 - Management Implication Reports – 1
- Customer Satisfaction – Cumulative Average Rate Received at December 31, 2015

Post assignment Surveys	After One Year Surveys
84%	69%

