

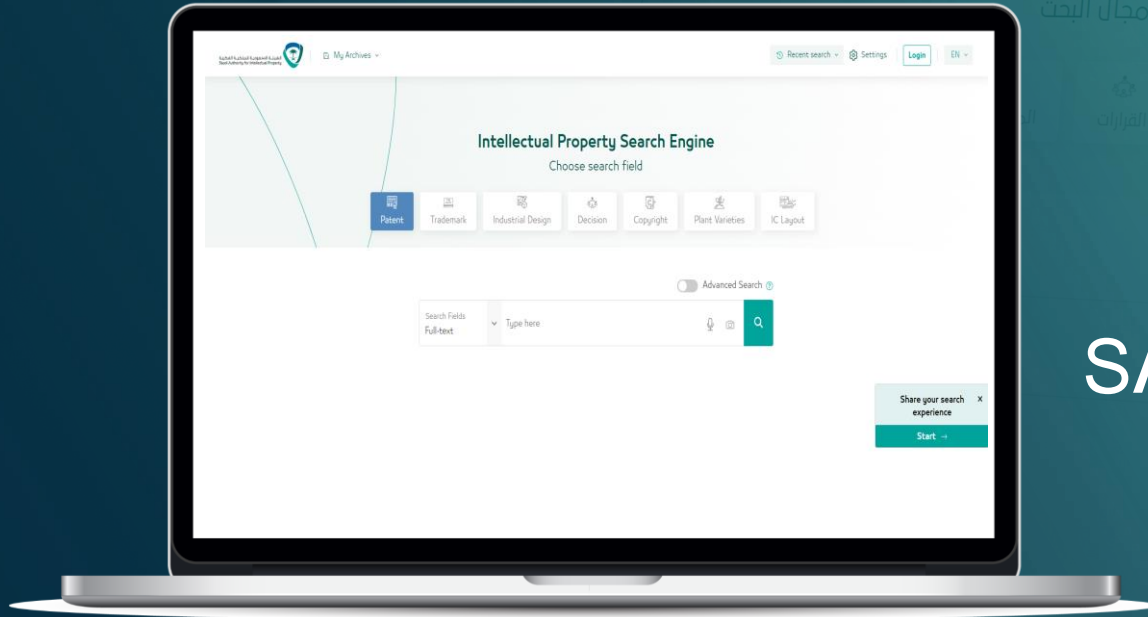


# SAIP's New IP Search Engine

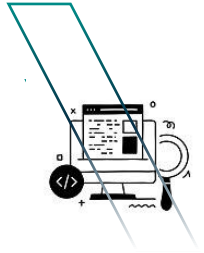


## محرك بحث الملكية الفكرية اختر مجال البحث

- البراءات
- العلامات التجارية
- التصاميم
- القرارات
- براءات الإختراع



# SAIP New IP Search



# Introduction

In today's world, the ability to access and manage intellectual property efficiently is more crucial than ever. It is not just about protecting ideas but empowering inventors, creators, and businesses to thrive.

To meet this need, we are proud to introduce SAIP's New IP Search Engine—a tool designed to transform the way IP is searched, analyzed, and managed. It is a comprehensive solution for IP professionals, researchers, and businesses alike.

SAIP's new platform offers a user-friendly interface, and faster search results, all while ensuring alignment with standards and adopting an innovative way of thinking.

# About the Product

This product is a culmination AI technologies and deep understanding of intellectual property needs. It represents our commitment to providing a seamless and integrated experience for IP professionals. It is designed to serve a wide array of IP domains, ensuring that no matter the type of intellectual property, our users can find and manage it with ease.



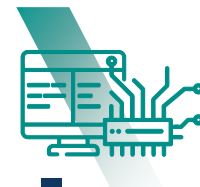
Patent



Industrial Designs



Trademarks



Layout Design of  
Integrated Circuit



Plant  
Varieties



Copyright



# Product Features - For Public Users

1

User-friendly interface that ensures unified access to all published IP fields information

2

Publication in accordance with the latest international IP standards set by WIPO.

3

Enhanced by artificial intelligence: Image, Audio, and Similarity search capabilities.

4

Offers instantaneous translation capabilities in more than 130 languages via Google Translate integration.



# Product Features - For Examiners

1

Facilitates examination-friendly experience by providing access to globally published data.

2

Integrates a streamlined report generation tool, enabling examiners to rapidly produce detailed search reports for enhanced efficiency.

3

Utilizing Artificial Intelligence Techniques in Search Operations (Image, Audio, and Similarity Search).

4

Launching an 'External Examiner' feature to allow the use of the platform from global and regional offices.

## Conclusion

Empowering the IP Landscape:  
SAIP's Commitment to Excellence and Collaboration

As we draw this presentation to a close, we confirm that our new IP Search Engine is more than just a tool—it's a reflection of our unwavering dedication to the intellectual property landscape.

We are excited to collaborate, learn, and grow with other IP offices and professionals and invite you to join us in this journey, to leverage the full potential of this new tool, and to contribute to a thriving global IP community.



